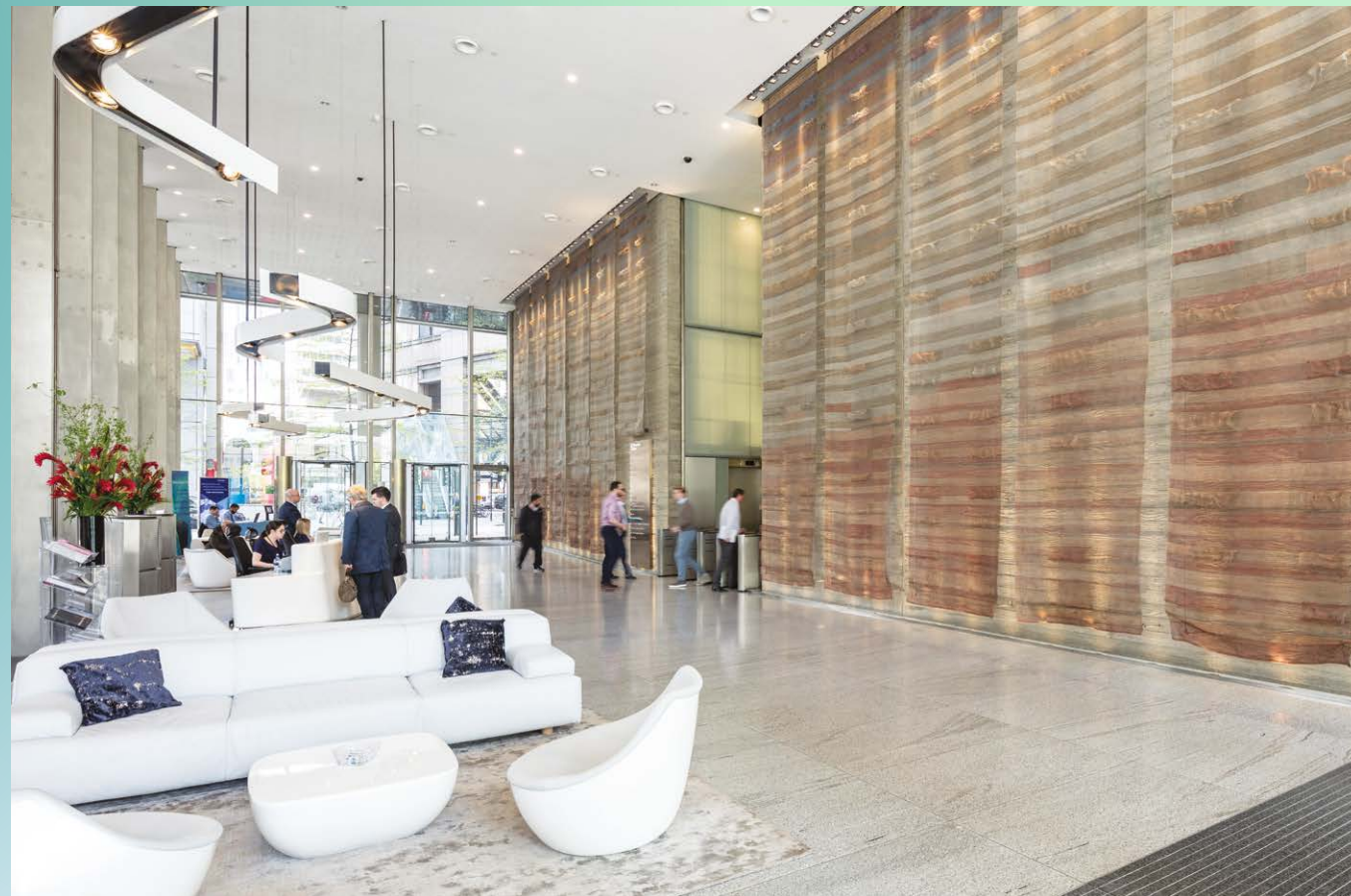


FIVE

Aldermanbury Square

London EC2

Take your place in a City landmark



5 Aldermanbury Square – a renowned address in the core of the City.

The building will offer 11,042 – 22,390 sq ft of refurbished CAT A office accommodation over the 17th and 18th floors.

Both floors have stunning panoramic views across the City. The 17th floor also benefits from three south facing terraces, offering the perfect space to take five, or use as breakout space to collaborate with colleagues.





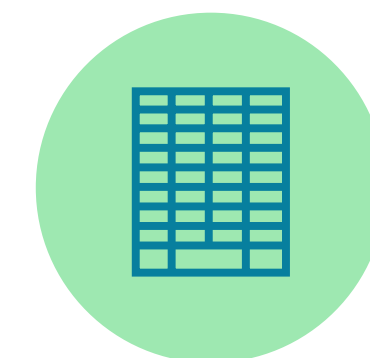
New Cat A
floors ready for
a bespoke fitout



Specification



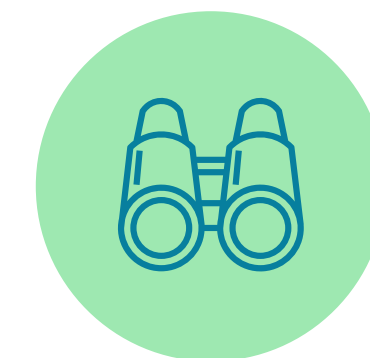
New CAT A
being delivered



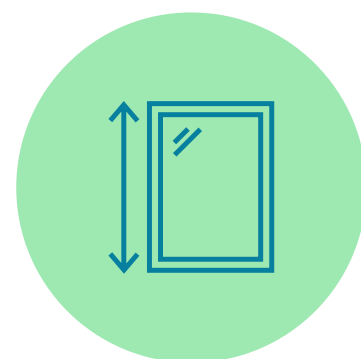
Top floors
of the building



Three south
facing terraces
on 17th floor



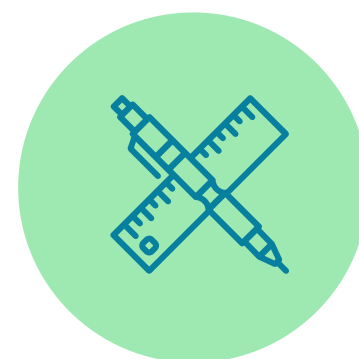
Fantastic views
across London



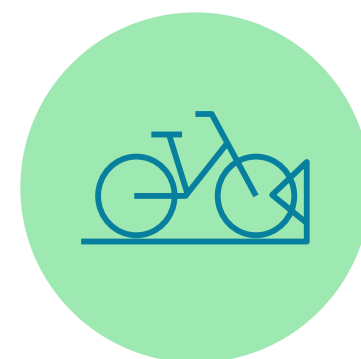
Floor to ceiling
glazing - excellent
natural light



Efficient
floors



Landmark building
by award winning
architect Eric Parry



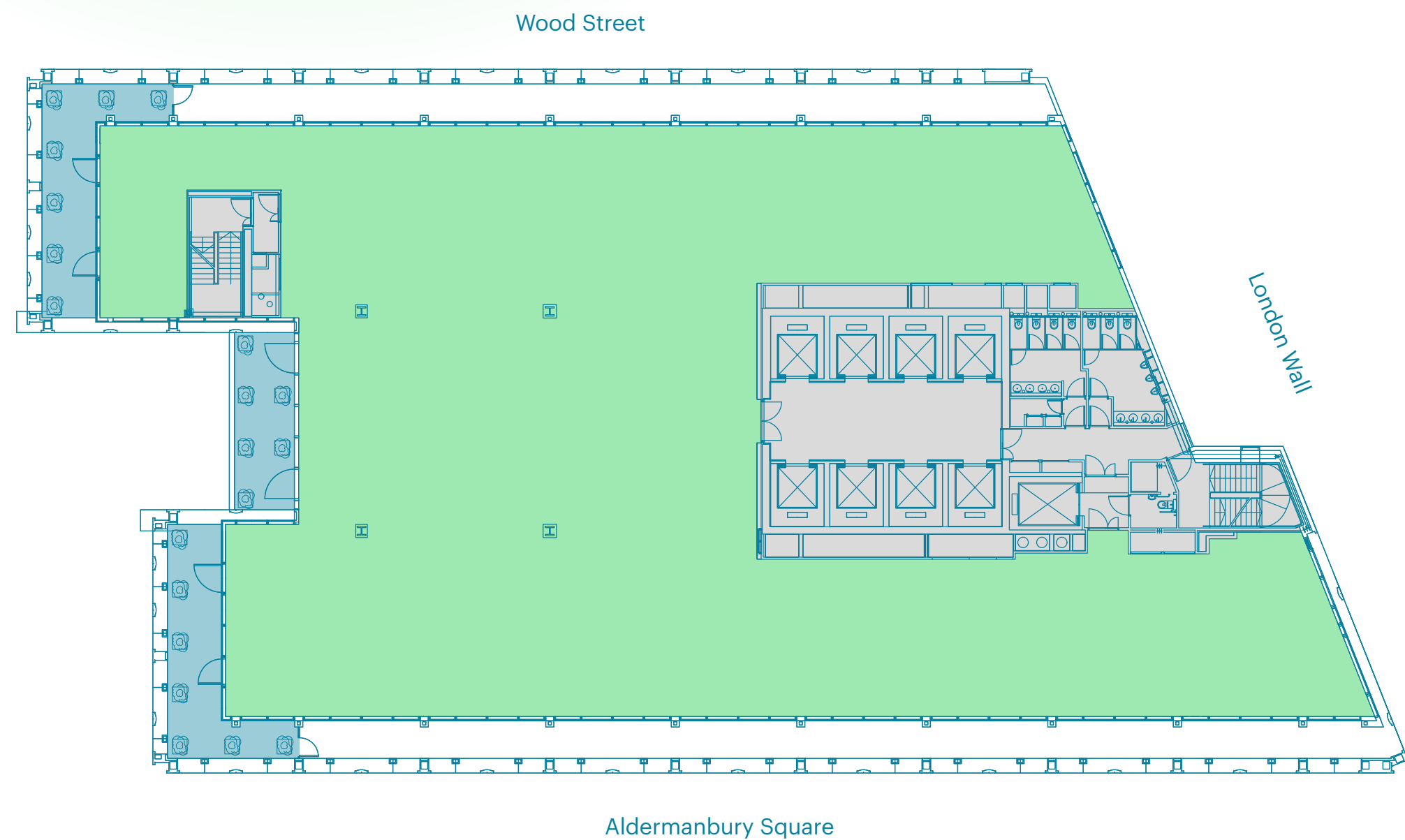
Bicycle racks,
lockers & shower
facilities

An impressive specification

A blank canvas to suit a range of occupiers

17th Floor Plan

11,348 Sq Ft (1,054.3 Sq M)



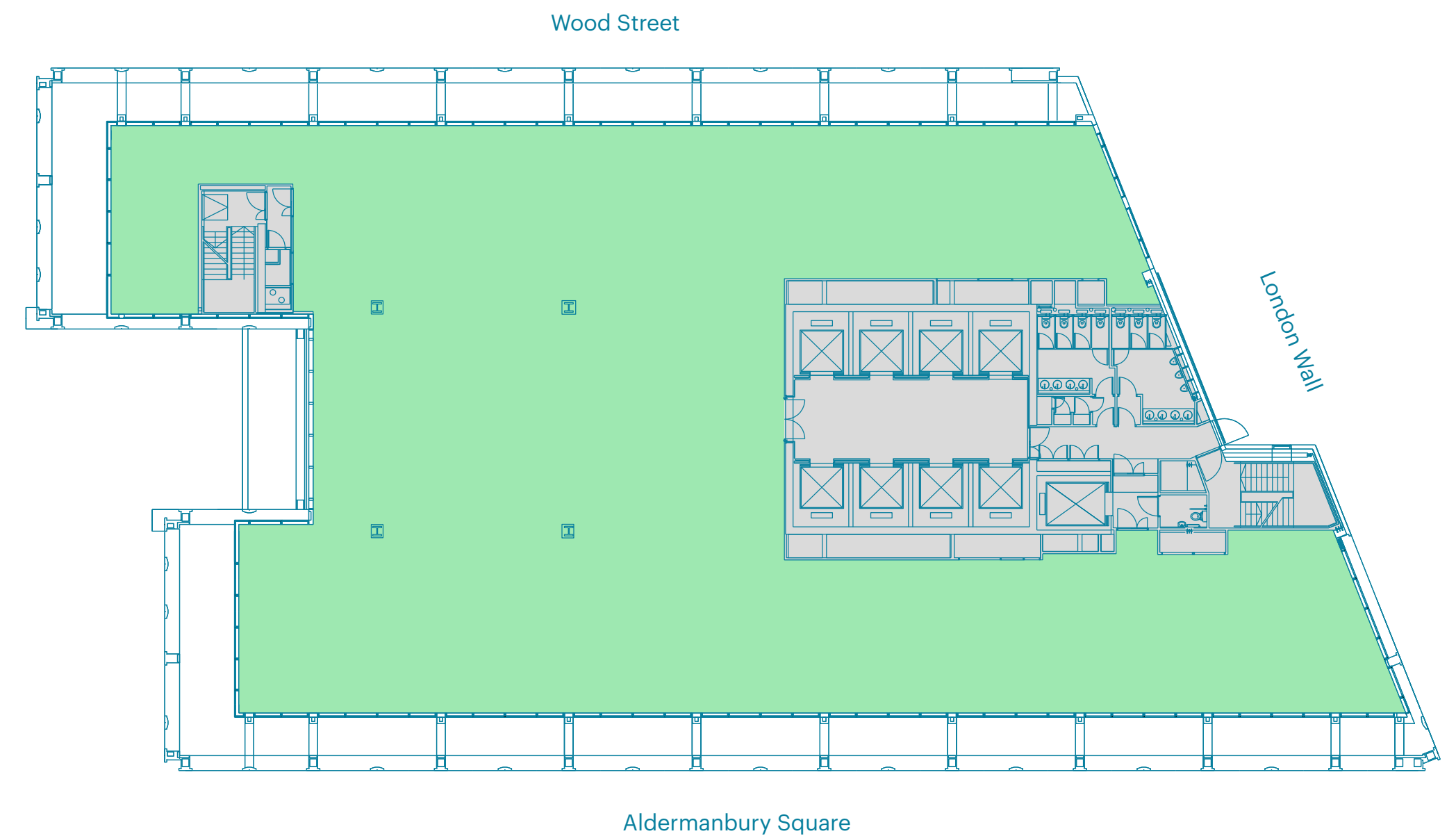
■ Office
 ■ Terrace
 ■ Core
 Plans not to scale, for indicative purposes only.

Accommodation

Floor	Landlord	Sq Ft	Sq M
18	BNP Paribas	11,042	1,025.8
17	BNP Paribas	11,348	1,054.3
Total		22,390	2,080.1

18th Floor Plan

11,042 Sq Ft (1,025.8 Sq M)



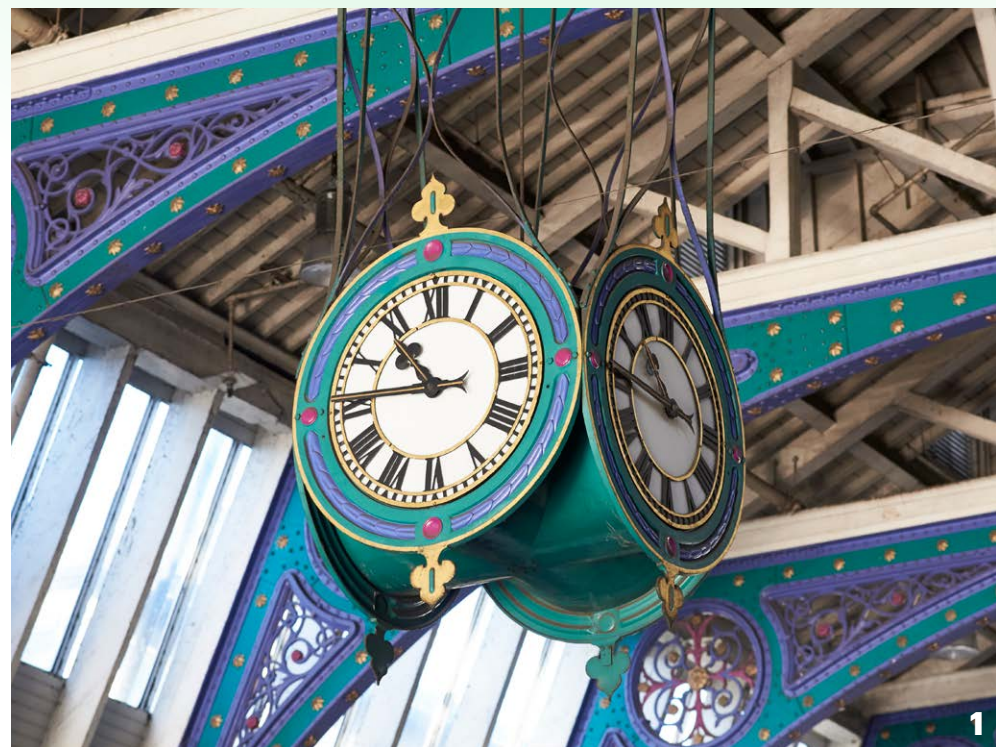
■ Office
 ■ Core
 Plans not to scale, for indicative purposes only.

Light filled workspace with stunning views



A bustling City position

1. Smithfield Market
2. The Happenstance
3. Gordon Ramsay Street Pizza
4. Barbican
5. Barbie Green
6. One New Change



Surrounded by the finest amenities

5 Aldermanbury Square is surrounded by the best of the City's bars, restaurants and shops.

One New Change, Smithfield Market and the Barbican are all just a short walk away – offering a wide and diverse amenity offering whether it's morning, noon or night.

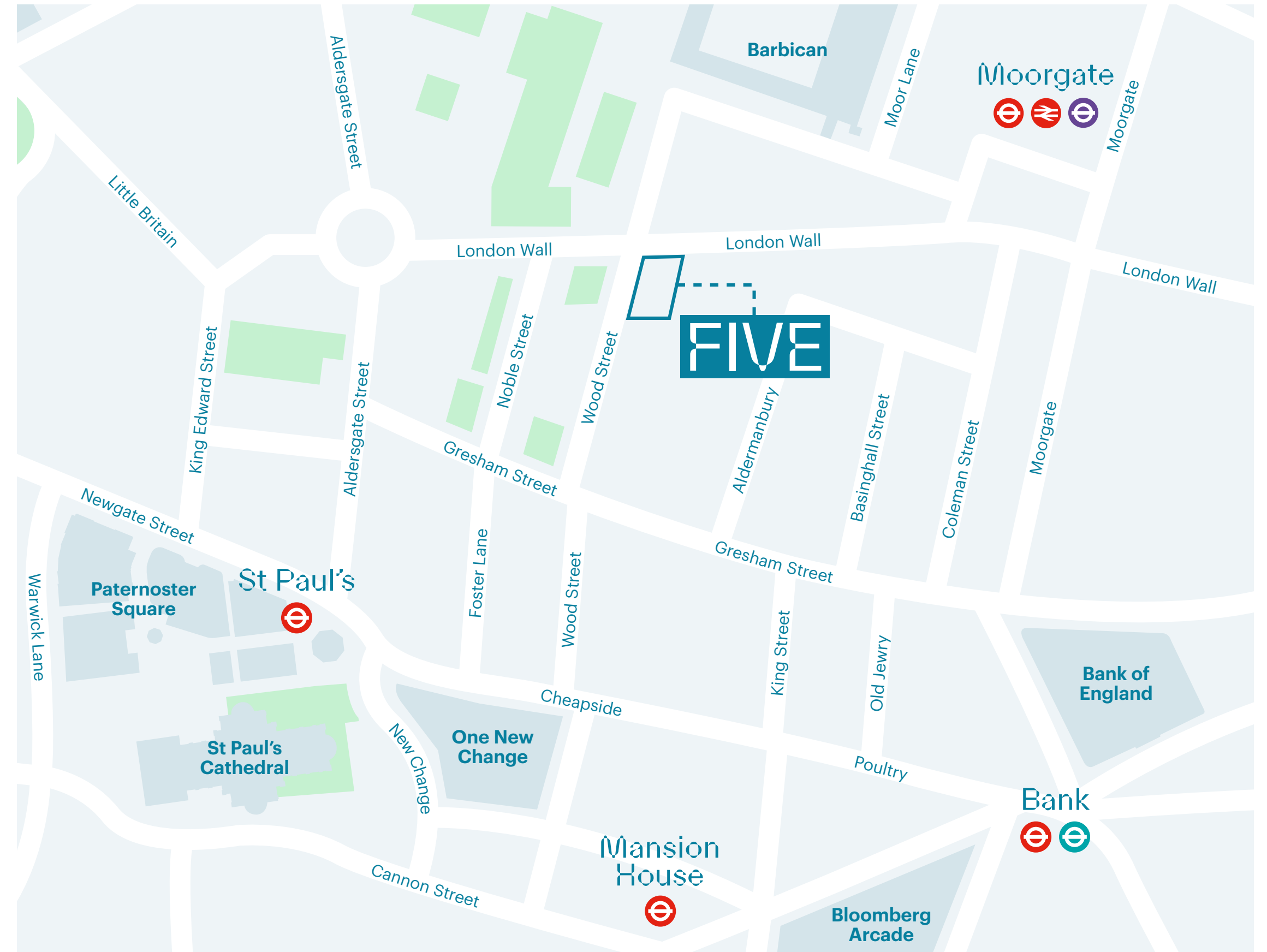
Benefiting from speedy connections

Moments away from major transport hubs.

The building is positioned near to Moorgate, St Paul's and Bank station.

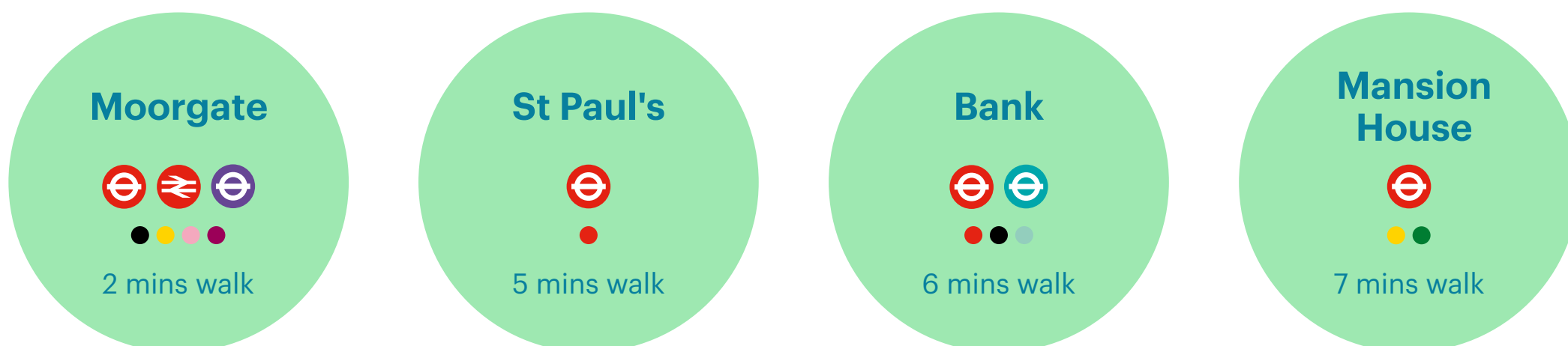
In addition to National Rail services, the Elizabeth Line will be accessible from Moorgate – providing a high frequency timetable, whilst also reducing travel time across London.

1. Paternoster Square
2. Museum of London



Connections

Journey times from the building. Source: TfL.



Local Occupiers



Further Information

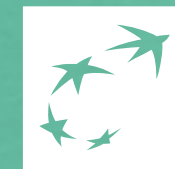
5aldermanburysquare.london

Terms

Upon application.

Tom Marsden

tom.marsden@realestate.bnpparibas
07904 980 073



**BNP PARIBAS
REAL ESTATE**

Viewings

Strictly through sole letting agents.

Jack Saunders

jack.saunders@realestate.bnpparibas
07818 539 177

Misrepresentation Act 1967: BNP Paribas Real Estate Advisory & Property Management UK Limited for themselves and for the vendor(s) or lessor(s) of this property whose agents they are, give notice that: 1. These particulars do not constitute, nor constitute any part of, an offer or contract. 2. None of the statements contained in these particulars as to the property are to be relied on as statements or representations of fact. 3. Any intending purchaser or lessee must satisfy himself by inspection or otherwise as to the correctness of each of the statements contained in these particulars. 4. The vendor(s) or lessor(s) do not make or give and neither BNP Paribas Real Estate Advisory & Property Management UK Limited nor any person in their employment has any authority to make or give, any representation or warranty whatever in relation to this property. Finance Act 2013: Unless otherwise stated all prices and rents are quote exclusive of VAT. The Business Protection from Misleading Marketing Regulations 2008: These details are believed to be correct at the time of compilation but may be subject to subsequent amendment. March 2022.

Designed and produced by Cre8te - 020 3468 5760 - cre8te.london
