

BRUNEL PARK UNIT 1

GROUND FLOOR

Brunel Way, Baglan Energy Park, SA11 2FP

TO LET



High Quality Office

1,633sq ft (151.7 sq m)

.....

- Located adjacent to the Council headquarter offices
- Very generous parking facilities
- Close to M4 Motorway
- Health Centre and Pharmacy on the same site

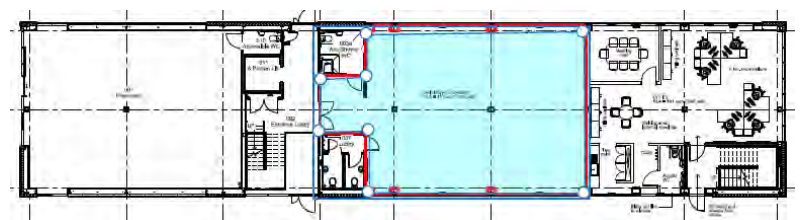
LOCATION

The Property is prominently located off Brunel Way at the northern tip of Baglan Energy Park, within 1 mile of Junction 41 of the M4 with direct access off the A48. Adjacent occupiers include Neath and Port Talbot Council (Headquarter Building), Ecolab, Inter-tissue, Quays Medical Practice and Neath Port Talbot Homes.

DESCRIPTION

A modern high quality development built to the highest energy efficient standards. Constructed in 2015, the suite benefits from:

- Dedicated entrance
- Open plan floor plate
- Private male / female WC's and shower
- Kitchenette
- Powder coated aluminium double-glazed windows
- Raised access floors with 150mm void and suspended ceilings with VDU compatible lighting
- Air conditioning and gas central heating system
- BREEAM "Very Good" standard
- Energy Performance Certificate rating of B (43)
- Low Service charge
- 9/10 parking spaces



Ground Floor Layout

ACCOMMODATION

Sq Ft

Sq M

Suite 1 (ground floor)

1,633

151.70

All measurements are approximate Net Internal Areas.

RENT

£20,500 per annum.

SERVICE CHARGE

Tenants will be responsible for a proportion of the cost of maintaining the external common parts of the Estate. A building service charge will also be levied for maintenance of the common parts of the building.

The Estate and Building Service Charge are estimated at £3.75 per sq ft per annum excluding gas, electric & water

VAT

Rents and service charge are exclusive of VAT.

ALL ENQUIRIES

For further information contact:

alder king

PROPERTY CONSULTANTS

029 2022 0000

Gerallt Dafydd

gdafydd@alderking.com

07990 891010

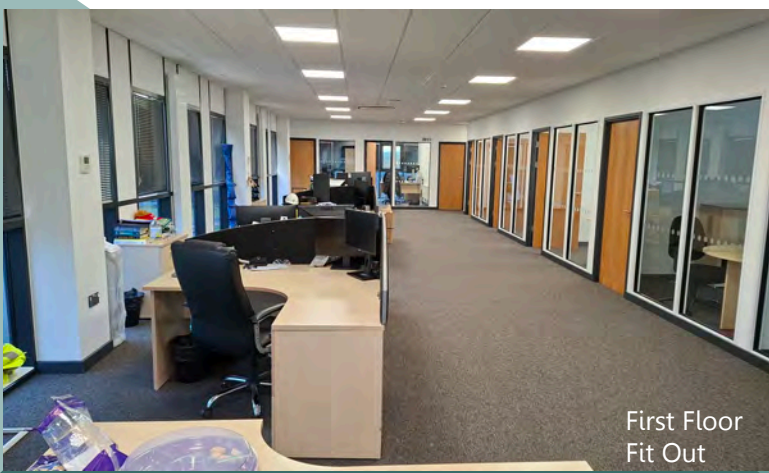


**Chartered
Surveyors**

Liam Slater

liam@rj-cs.co.uk

07707 855407



First Floor
Fit Out

Alder King and Cooke & Arkwright for themselves and for the vendors or lessors of this property for whom they act, give notice that: (i) these particulars are a general outline only, for the guidance of prospective purchasers or tenants, and do not constitute the whole or any part of an offer or contract; (ii) Alder King and Cooke & Arkwright cannot guarantee the accuracy of any description, dimensions, references to condition, necessary permissions for use and occupation and other details contained herein and prospective purchasers or tenants must not rely on them as statements of fact or representations and must satisfy themselves as to their accuracy; (iii) no employee of Alder King or Cooke & Arkwright has any authority to make or give any representation or warranty or enter into any contract whatever in relation to the property; (iv) rents quoted in these particulars may be subject to VAT in addition; (v) Alder King and Cooke & Arkwright will not be liable, in negligence or otherwise, for any loss arising from the use of these particulars; and (vi) the reference to any plant, machinery, equipment, services, fixtures or fittings at the property shall not constitute a representation (unless otherwise stated) as to its state or condition or that it is capable of fulfilling its intended function. Prospective purchasers/tenants should satisfy themselves as to the fitness of such items for their requirements."