



frost
meadowcroft

13 PARK STREET, CHELSEA, SW6 2FS
1,323 SQ FT (122.91 SQ M)

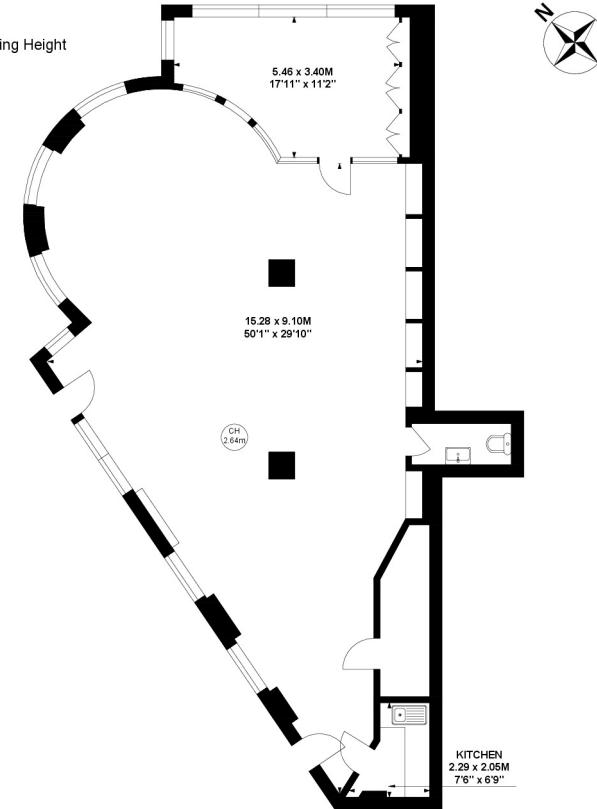
KEY POINTS

- Chelsea Creek
- Corner Frontage
- Luxury Interior Finish
- Glass Frontage
- Riverside surroundings

Park Street, SW6

Approximate gross internal area
128.96 sq m / 1388 sq ft

Key :
CH - Ceiling Height



Ground Floor

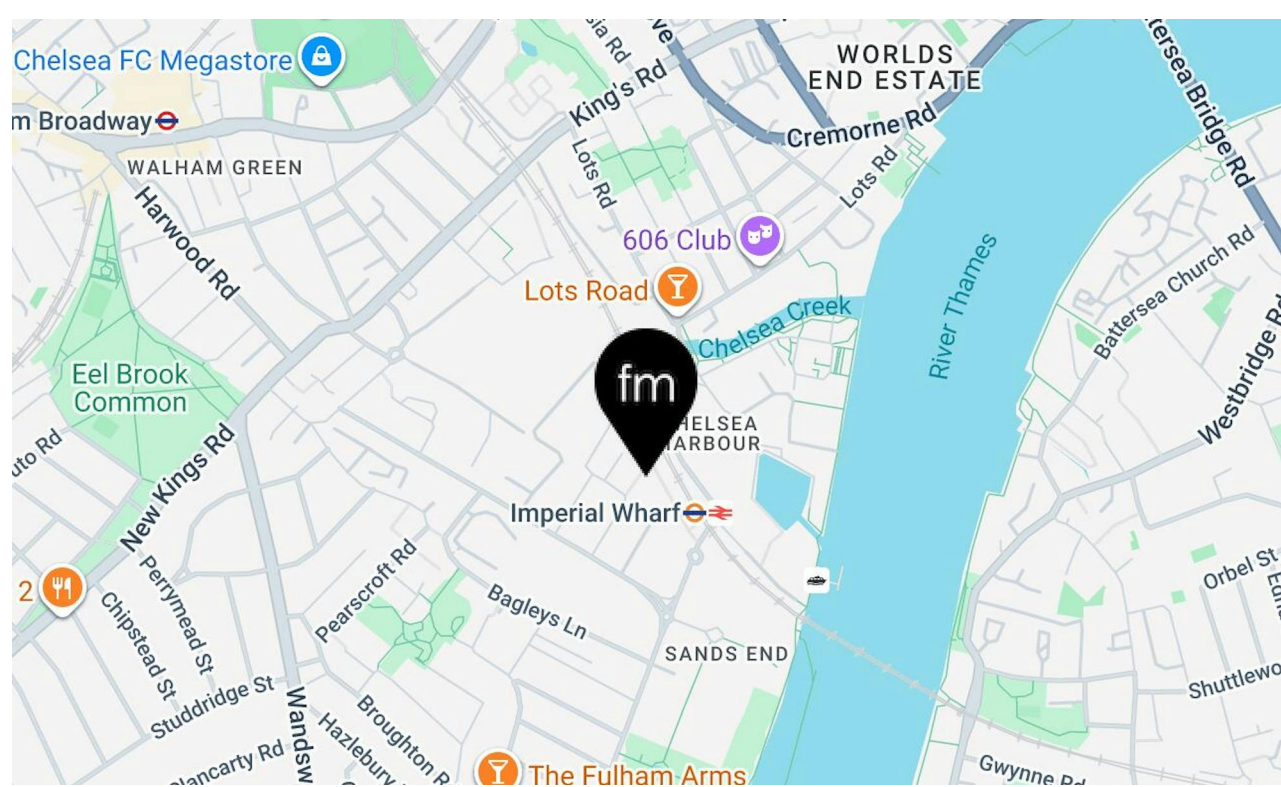
Not to scale, for guidance only and must not be relied upon as a statement of fact.
All measurements and areas are approximate only

LOCATION

Situated within Chelsea Creek in Sands End, Fulham, 13 Park Street, SW6 2FS benefits from outstanding local connectivity and amenities. The area is served by nearby train stations, notably Imperial Wharf which is a 2 minute walk and multiple bus stops, offering excellent transport access across London. There are also 2 public car parks adjacent for visitors. The postcode lies within the London Travel to Work Area, ensuring strong commuter links. Fulham's SW6 is known for its blend of modern riverside developments, boutique retail, green spaces, dining options, and cultural attractions. Nearby amenities include boutique shops, diverse restaurants, parks, and riverfront walkways. Chelsea Creek itself offers landscaped surroundings and a premium residential environment, contributing to strong footfall, high quality neighbouring occupiers, and an attractive setting.

DESCRIPTION

Set within the prestigious Chelsea Creek development, this striking ground floor corner unit at 13 Park Street, SW6 2FS offers an exceptional opportunity to buy in one of Fulham's most sought after neighbourhoods. Featuring floor to ceiling glazing, elegant architectural detailing, and strong street presence, the unit provides an impressive, high quality retail or showroom property. The space is beautifully presented with premium finishes, bright open plan layout, and a modern, luxurious aesthetic ideal for high end retail, gallery, showroom, or boutique uses. Its generous frontage, curved corner design, and landscaped surroundings enhance visibility.







frost

meadowcroft

AVAILABILITY

The accommodation comprises the following areas:

Name	sq ft	sq m	Availability
Ground	1,323	122.91	Available
Total	1,323	122.91	



PRICE

Offers from £575,000

BUSINESS RATES

Rates Payable To be confirmed

SERVICE CHARGE

£5 per sq ft

LEGAL FEES

Each party to bear their own costs

EPC

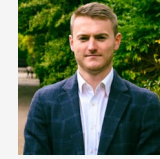
B (40)

VAT

Not applicable

ADDITIONAL INFORMATION

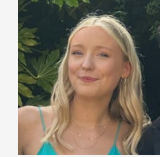
CONTACT



Tristan David

020 8748 1200 | 07789347999

tdavid@frostmeadowcroft.com



Katie Joyner

020 8748 1200 | 07502

542997

kjoyner@frostmeadowcroft.com

Date of Publication: April 2026



Misrepresentation Act 1967: These particulars are believed to be correct but their accuracy is not guaranteed and they do not form part of any contract. Unless otherwise stated, all prices and rents are quoted exclusive of VAT.

frost meadowcroft

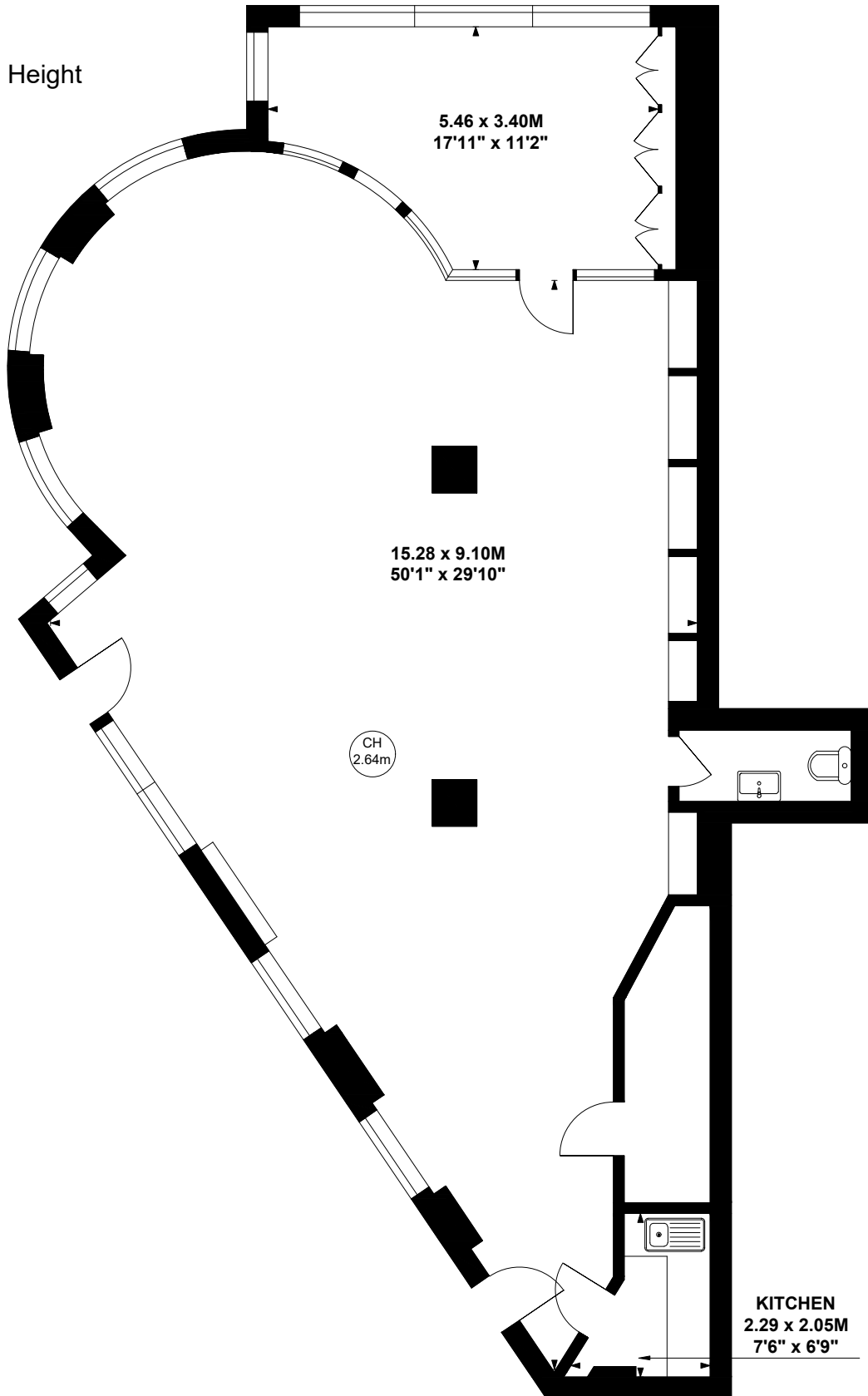
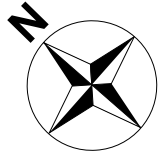
**WEST LONDON'S LEADING
COMMERCIAL PROPERTY AGENCY**

**FROSTMEADOWCROFT.COM | 020 8748 1200
ISLAND STUDIOS, 22 ST PETERS SQUARE
HAMMERSMITH, LONDON W6 9NW**

Park Street, SW6

Approximate gross internal area
128.96 sq m / 1388 sq ft

Key :
CH - Ceiling Height



Ground Floor

Not to scale, for guidance only and must not be relied upon as a statement of fact.
All measurements and areas are approximate only