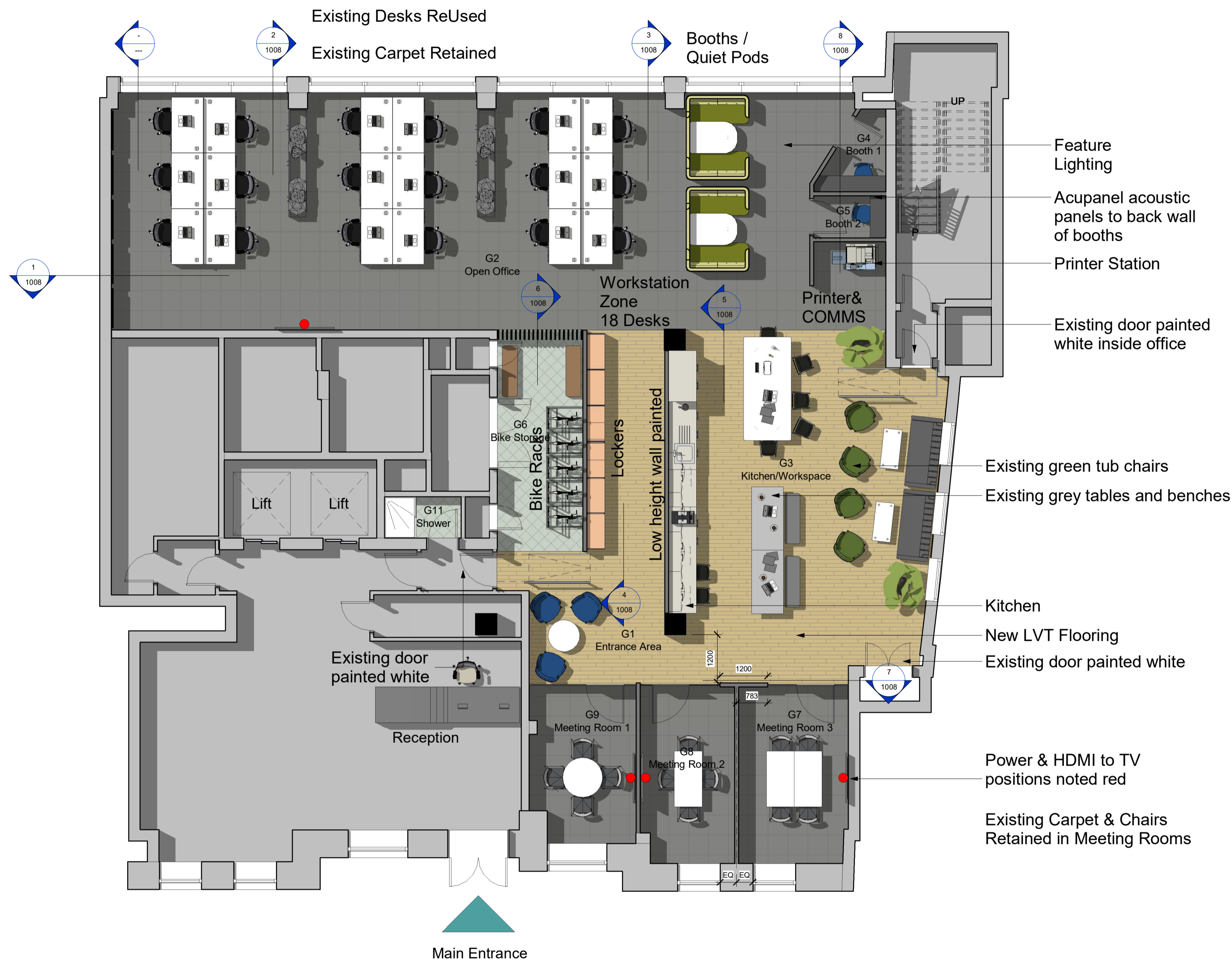
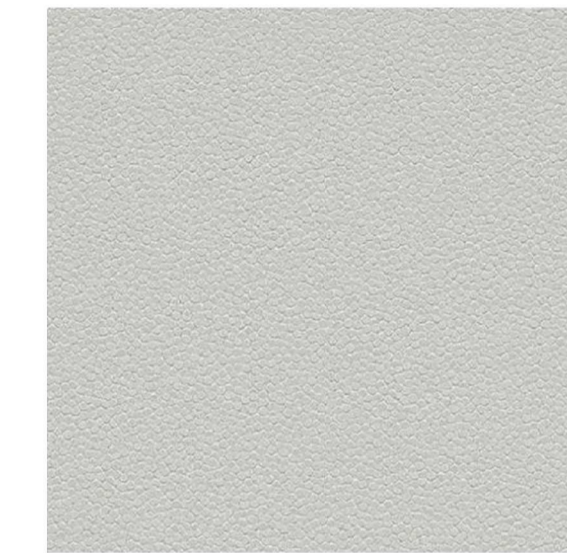


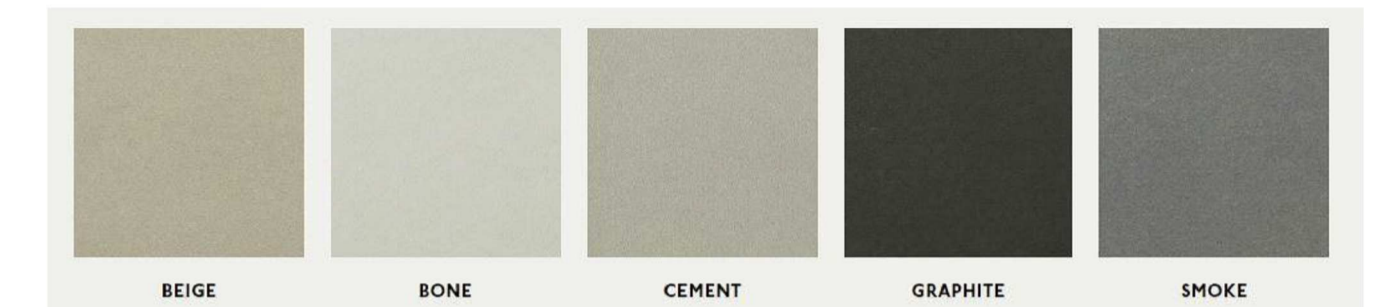
DO NOT SCALE FROM THIS DRAWING.  
ALL DIMENSIONS TO BE CHECKED ON SITE.  
Measurements to existing structures can vary and are subject to confirmation and contractor surveys.  
For referenced views and supporting information refer to the following drawings:



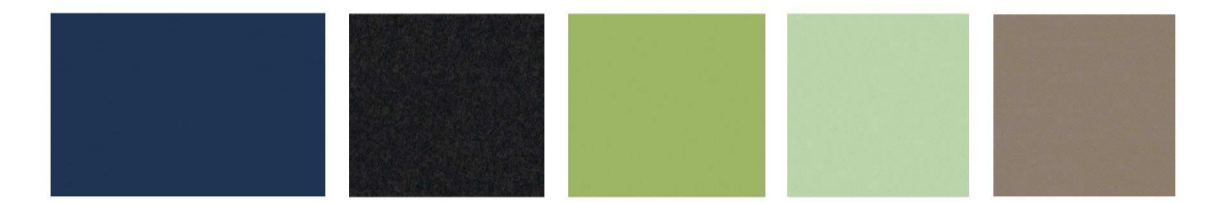
Carpet Retained



Vinyl Flooring - Forbo Safestep Aqua 180862



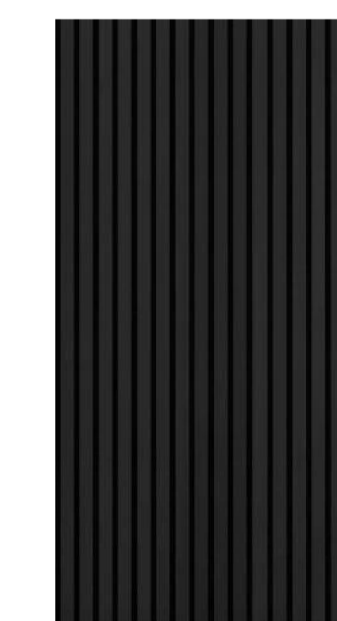
Primary Fabric Colours - By Camira



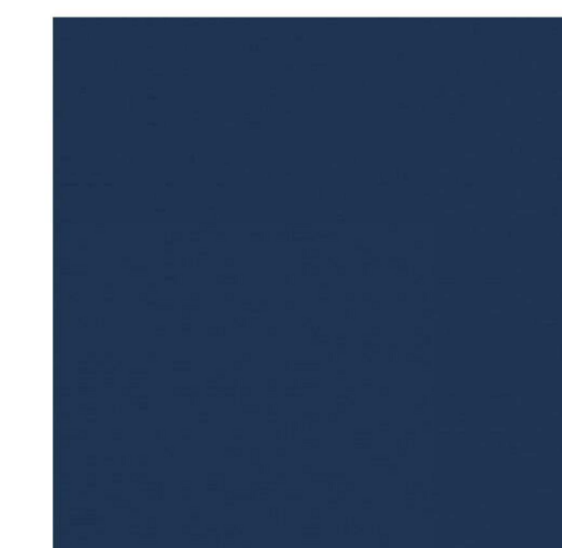
LVT - Polyflor Expona EnCore Rigid Rice Wine Oak



Main Joinery Timber



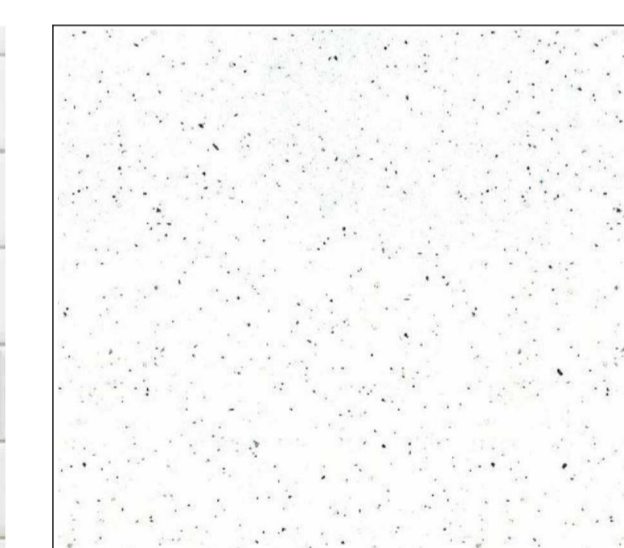
Acoustic Panels to Booths



Kitchen Doors - Navy



Kitchen Splashback



Kitchen Worktop



Kitchen Handles

### Kitchen Specification

Howdens Hockley style kitchen with slab doors in NAVY Super Matt finish made from 18mm wrapped MDF edged in ABS to match colour. Hinges to be chrome finish with soft close mechanism. Hardware - Quanto pull handle finished in - dark bronze effect.

Worktop in colour White Mirror Chip Core Material - Solid Quartz with a chamfered edge profile - polished finish with Cransley Single Bowl no drainer undermounted stainless steel sink - grooves for drainer to be routed into worktop - sink code - SNK4921. Tap to be Calaggio Matt Black mixer - tap code TAP3650.

Plinth to be Cerkenwell 16mm Super Matt Charcoal Grey.

## 1 00 - Ground Floor - GA

1 : 75

CR1	PGR	JPL	01.12.22	Following items removed - Timber slating above the locker, Timber slating behind the mustard booths, Furniture on the wall (other side of ground floor toilets).
CR	PGR	JPL	17.11.22	Issued as Record Drawing.
rev	by	chkd	date	description

**Form**  
London Office  
28 Herbet Hill  
London EC1R 5EJ  
United Kingdom  
Head Office  
Unit H, Albarn Industrial Estate  
Beverage Road, Loxwood  
Chatham, Kent ME5 8UD  
United Kingdom  
020 7251 9111  
info@formfoud.co.uk

project 29 Queen Anne's Gate

title Ground Floor - GA

scale	1 : 75 @ A1	drawn	PGR	project no.	0048	purpose of issue	Record Drawing
date	18.05.22	checked	JPL	level	0048	rev	R
drg / doc ref	2042-	originator	JPL-	volume	XX-	code	00- DR-A- 1000
		level		type		number	CR1