



LISTER HOUSE
Horsforth, Leeds

TO LET - PRIME OFFICES IN HORSFORTH



- HIGHLY SPECIFIED ENERGY EFFICIENT OFFICES
- EXCELLENT PARKING
- POPULAR LOCATION

GF West Suite - 1,984 sq ft

LOCATION

Lister House is strategically located close to both Horsforth Train Station and the Leeds Outer Ring Road (A6120) thereby benefitting from excellent access to both Leeds City Centre and the North Leeds suburbs.

Leeds Bradford Airport is also only a short distance from the property and the many local amenities of Horsforth including coffee shops, banks, restaurants, bus routes and the Post Office are all within easy walking distance.

DESCRIPTION

Lister House is a modern energy efficient office building set in attractive landscaping, constructed of feature facing brickwork and feature glazing. The property benefits from an attractive entrance foyer and lift serving all floors.

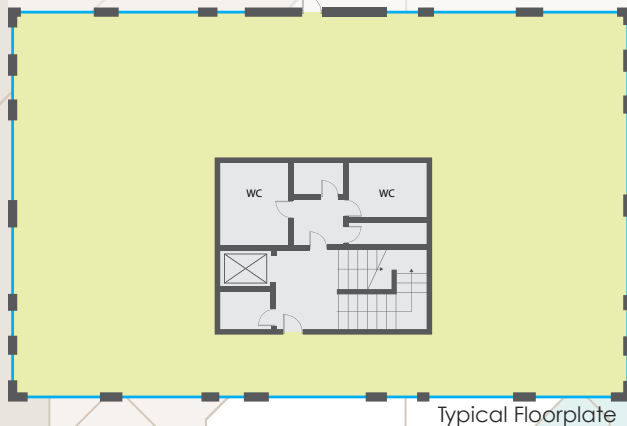


The available accommodation benefits from the following specification features:

- Newly redecorated & new attractive carpeting
- New comfort cooling
- Raised access floors
- Modern suspended ceilings
- LED lighting throughout
- Kitchenette facilities
- Attractive common areas
- Passenger Lift
- Cycle rack and shower facilities
- Excellent energy efficiency - EPC rating B (copy available on request)

ACCOMMODATION

Floor	sq ft	Parking
Ground West Suite	1,984	7 spaces



LISTER HOUSE

Horsforth, Leeds

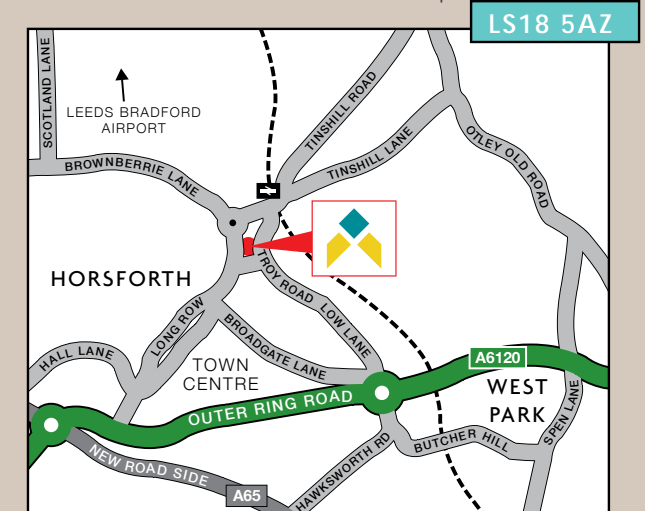


TERMS

The accommodation is available by way of a new full repairing and insuring lease for a term to be agreed. Further details are available on request.

RATES

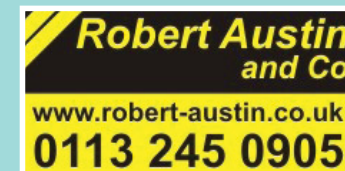
Further information available on request.



IMPORTANT NOTICE RELATING TO THE MISREPRESENTATION ACT 1967 AND THE PROPERTY MISDESCRIPTION ACT 1991

Robert Austin and Carter Towler on their behalf and for the sellers or lessors of this property whose agents they are, give notice that: (i) The Particulars are set out as a general outline only for the guidance of intending purchasers or lessees, and do not constitute, nor constitute part of, an offer or contract; (ii) All descriptions, dimensions, references to condition and necessary permissions for use and occupation, and other details are given in good faith and are believed to be correct, but any intending purchasers or tenants should not rely on them as statements or representations of fact, but must satisfy themselves by inspection or otherwise as to the correctness of each of them; (iii) No person employed by Robert Austin and Carter Towler has any authority to make or give any representation or warranty in relation to this property. Unless otherwise stated prices and rents quoted are exclusive of VAT.

Matthew Austin



James Jackson

