



STRETTONS

EST 1931

The Textile Building, Unit 4 - 2a Belsham Street, Hackney, London, E9 6NJ

TO LET

Leisure / Retail / Studio / Workshop

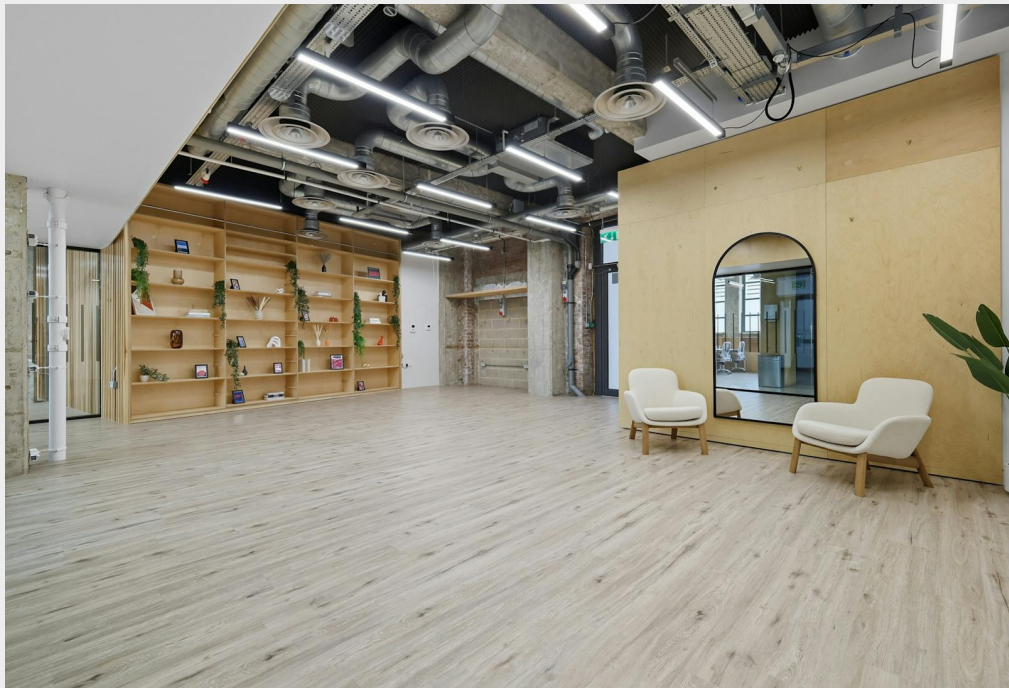
2,547 sq ft / 236.6 sq m

£29.50 per sq ft

Former Nike Office, Creative Studio/ Workshop in Hackney



- Former Nike Office/ Studio
- Creative and versatile workspace with private meeting rooms
- Ground floor unit with good loading from street level
- Excellent ceiling heights
- High specification finish throughout
- Private WC's and shower
- Suitable for a range of uses
- Available now

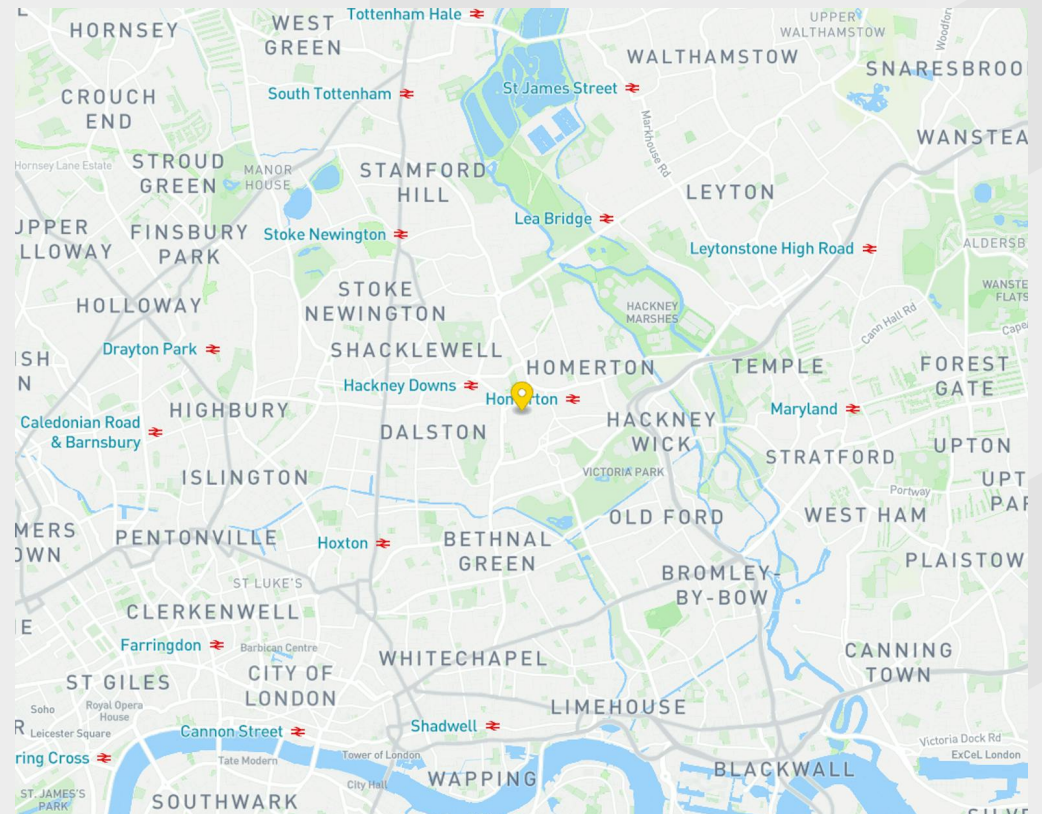


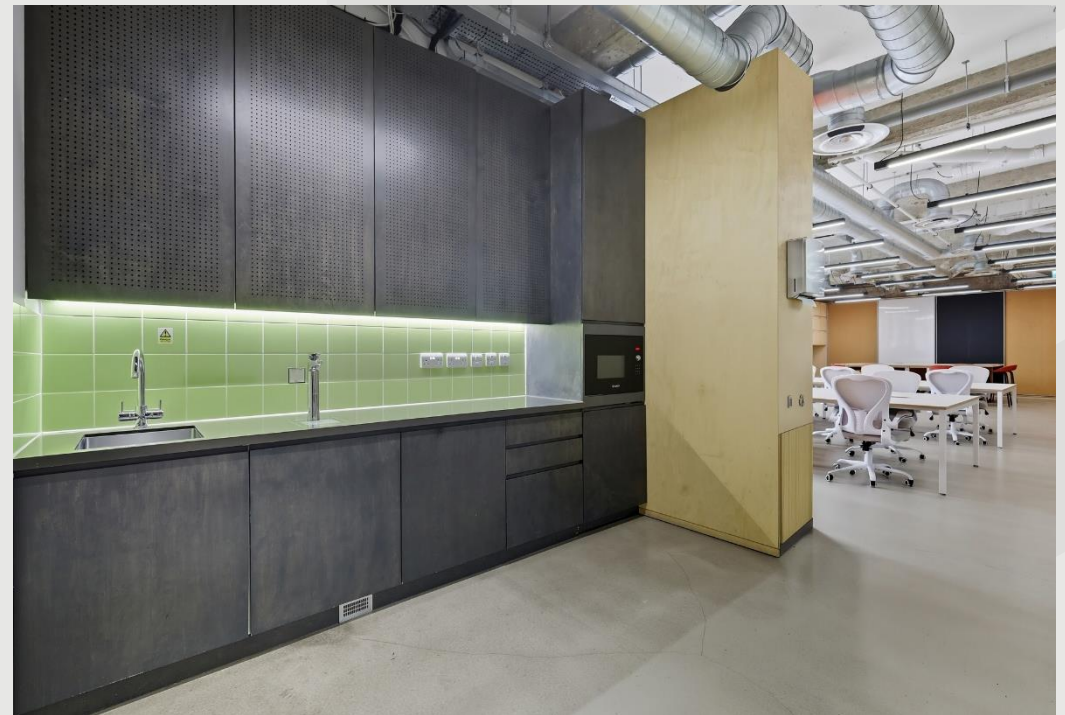
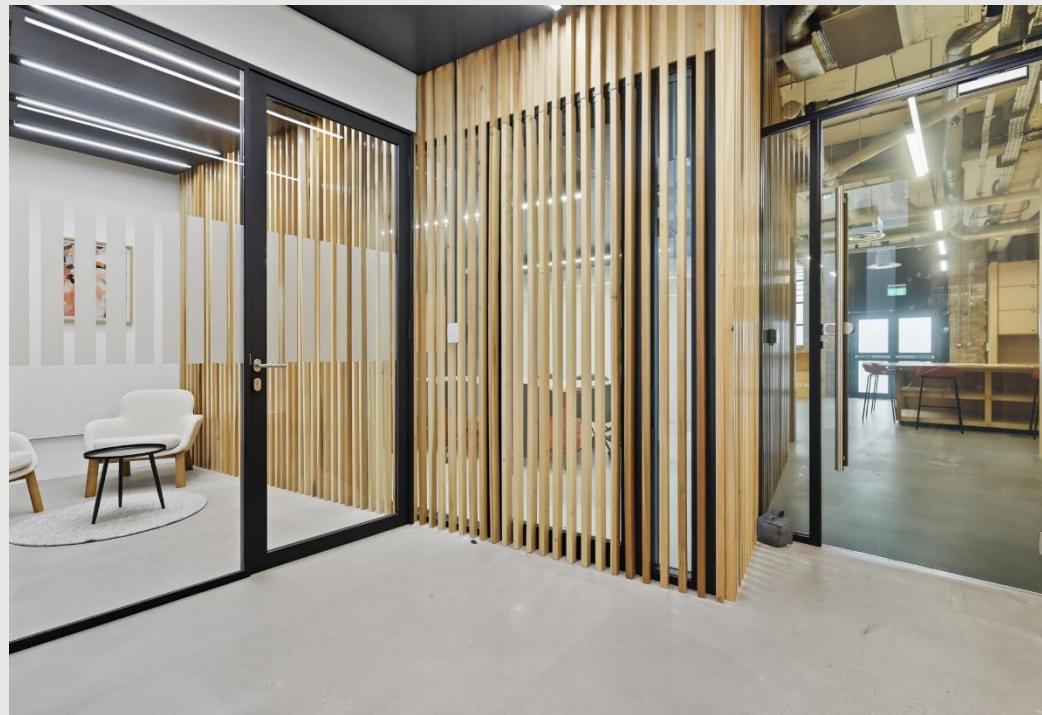
Description

The Textile Building is a mixed-use, warehouse-style development that is home to a diverse range of occupiers, including creative agencies, fashion designers, and well-known global brands.

Location

Located on Chatham Place in the heart of Hackney's luxury designer outlet area. The immediate location is home to a number of recognised retailers including Burberry and Nike, alongside various showrooms and local businesses. Hackney Central Station (overground services to Stratford, north and west London) is an eight minute walk from the property. Hackney Downs and London Fields overground Stations are also a short walk from the property, with trains running every 15 minutes to Liverpool Street Station taking 7-9 minutes.





Accommodation / Availability

| Unit | Sq ft | Sq m | Rent | Rates payable | Service charge | Total month |
|----------|-------|--------|---------------|---------------|----------------|-------------|
| Unit - 4 | 2,547 | 236.62 | £29.50 /sq ft | £5.34 /sq ft | £1.92 /sq ft | £7,802.31 |

Tenure

New Lease

EPC

C

VAT

Applicable

Configuration

Fitted

Contacts

Tom Schwier
07583 037 559
tom.schwier@strettons.co.uk

Joel Barnes
07974 625 109
joel.barnes@strettons.co.uk



Further Information

[Floor Plans](#)

Strettons and their clients give notice that: 1. They are not authorised to make or give any representations or warranties in relation to the property either here or elsewhere, either on their own behalf or on behalf of their client or otherwise. They assume no responsibility for any statement that may be made in these particulars. These particulars do not form part of any offer or contract and must not be relied upon as statements or representations of fact. 2. Any areas, measurements or distances are approximate. The text, photographs and plans are for guidance only and are not necessarily comprehensive. It should not be assumed that the property has all necessary planning, building regulation or other consents and the Agents have not tested any services, equipment or facilities. Purchasers must satisfy themselves by inspection or otherwise. Generated on 09/10/2025