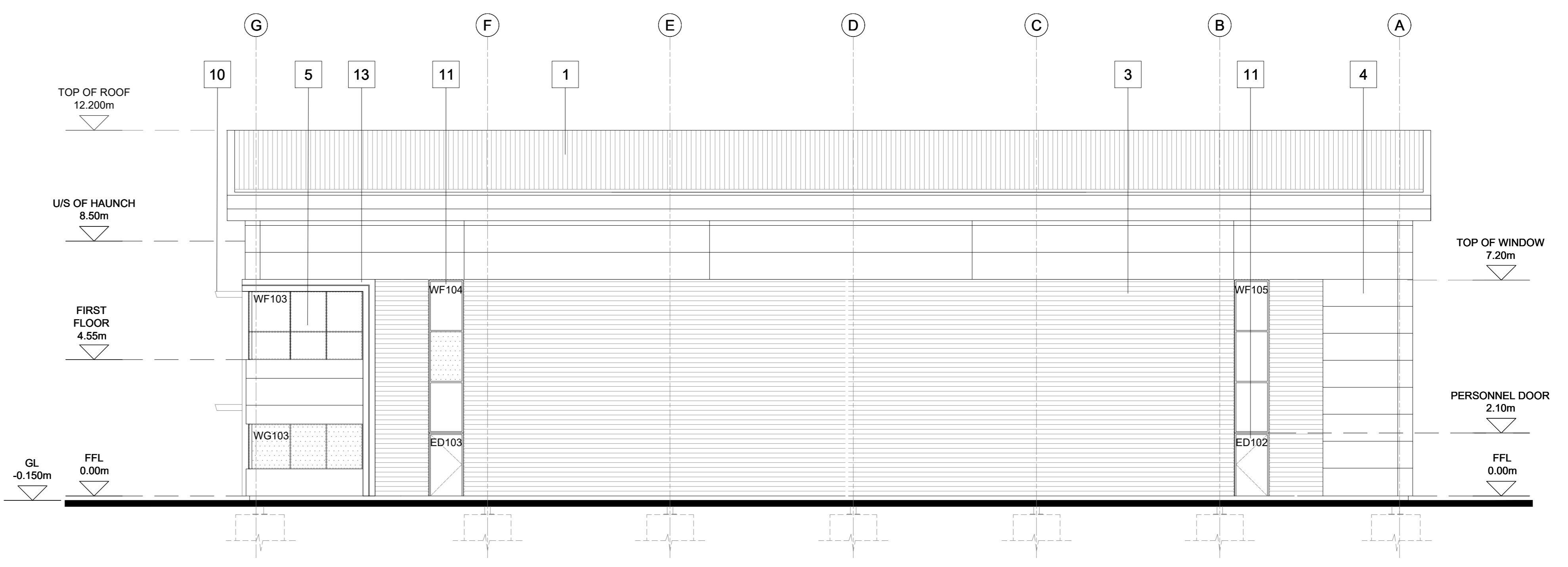
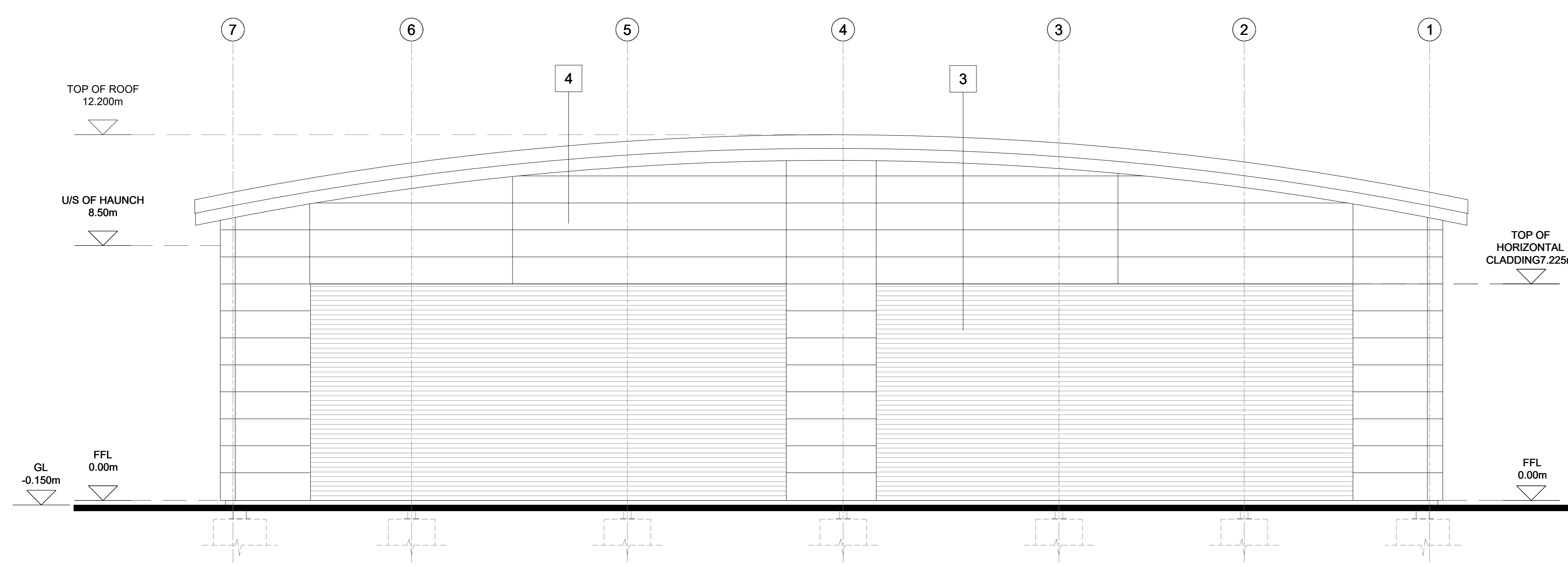


NORTHERN ELEVATION



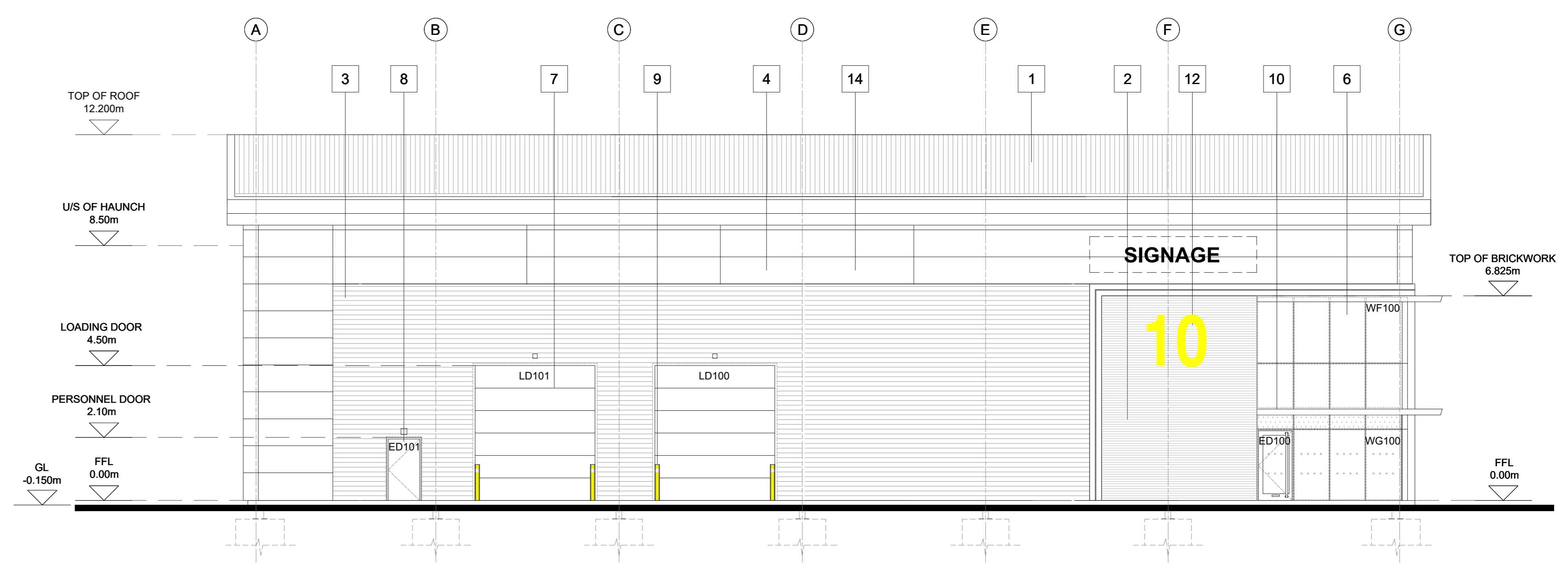
WESTERN ELEVATION

CLADDING ELEMENTS TO BE 60/15 MIN FR (20% UNPROTECTED)

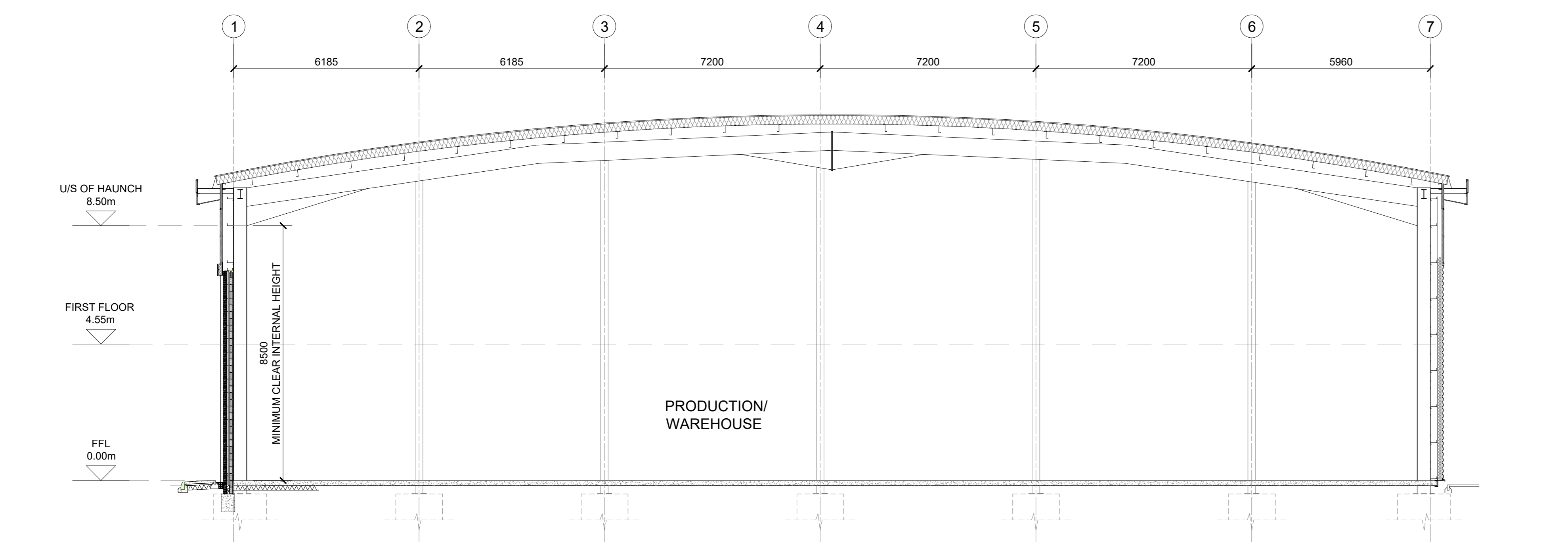


SOUTHERN ELEVATION

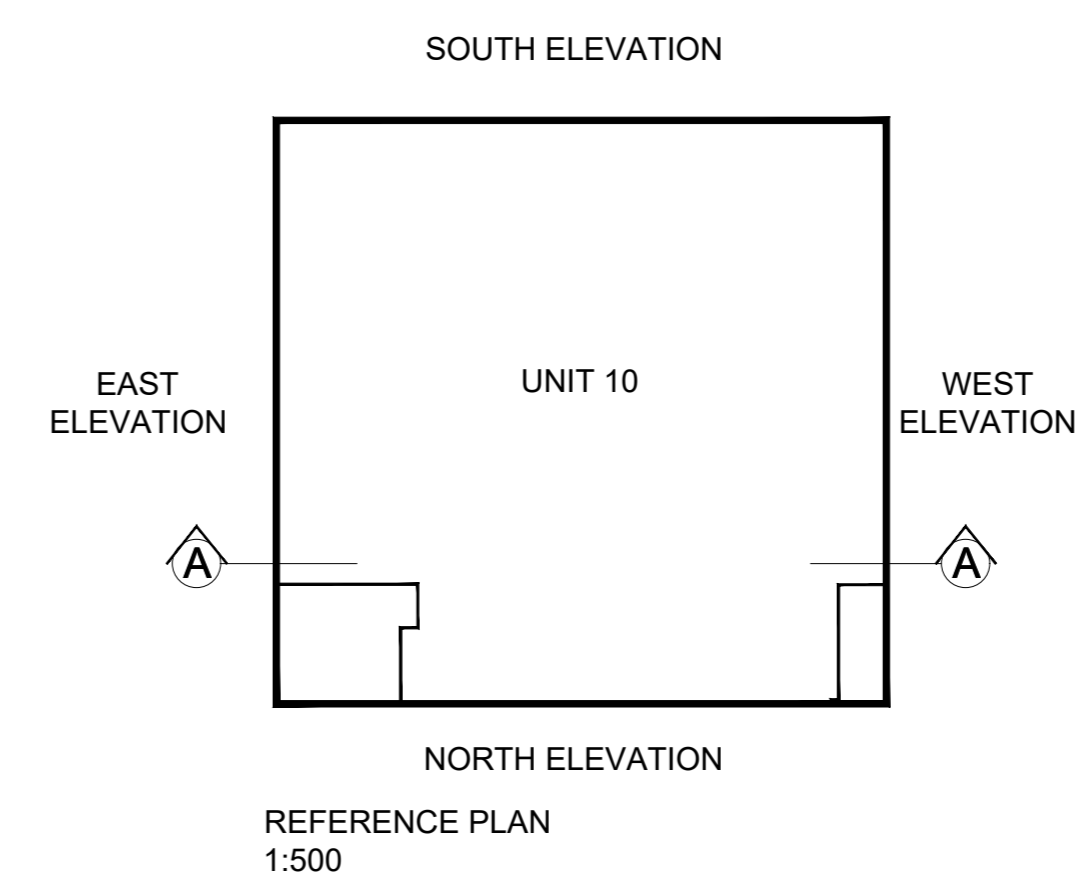
CLADDING ELEMENTS TO BE 60/15 MIN FR (30% UNPROTECTED)



EASTERN ELEVATION



TYPICAL CROSS SECTION A-A



MATERIALS KEY

- ① TRUE CURVED ROOF CLADDING (GOOSEWING GREY RAL 7038)
- ② BRICKWORK
- ③ HORIZONTAL ARC PROFILE CLADDING (METALLIC SILVER RAL 9006)
- ④ MICRO-RIB CLADDING (WHITE RAL 9003)
- ⑤ CAPLESS WINDOWS (ANTHRACITE RAL 7016)
- ⑥ ALUMINIUM FRAMED ENTRANCE DOORS AND FULL HEIGHT CAPLESS GLAZING (ANTHRACITE RAL 7016)
- ⑦ LOADING BAY DOORS (ANTHRACITE RAL 7016)
- ⑧ STEEL PERSONNEL DOORS (ANTHRACITE RAL 7016)
- ⑨ STEEL BOLLARD
- ⑩ MAIN ENTRANCE BRISE-SOLEIL
- ⑪ ALUMINIUM FRAMED WINDOWS (ANTHRACITE RAL 7016)
- ⑫ ALUMINIUM UNIT NUMERAL
- ⑬ FLASHING (ANTHRACITE RAL 7016)
- ⑭ LOUVRES

RECORD DRAWING (AS BUILT)
 This drawing incorporates the information last issued for construction under the building contract. This drawing has not been verified by dimensional survey and allowable construction tolerances may have resulted in differences between this drawing and the finished building. The composition of materials indicated on this drawing has not been checked. This drawing is to be read in conjunction with sub contractor drawings and information.

- Drawing to be read in conjunction with:
- NBS Specification
 - 10 Series - Site information
 - 13 Series - Floor plans & elevations
 - 18 Series - Core layouts
 - 19 Series - Roof plans
 - 30 Series - Fire Strategy
 - 31 Series - Finishes Schedule
- Refer to M & E Engineer's specification for all engineering services.
 For steelwork refer to Structural Engineer's design.

Client: **Magrock PRC**

Project: **BARTLEY JUNCTION BARTLEY WOOD HOOK**

12 Waverley Way, Woking, Surrey, GU24 0NF
 01889 359245
 info@prcgroup.com
 www.prcgroup.com

Drawing Title: **UNIT 10 ELEVATIONS & TYPICAL SECTION**

Scale @ A2: 1:100
 Checked by: AMc
 Date: APR 25

Issue Status:
 Construction Preliminary
 Information Approval
 Tender

Offices:
 Woking
 London
 Milton Keynes
 Warsaw

Architecture:
 Planning
 Master Planning
 Urban Design
 Interiors
 Landscape

Job No: 11248
 Drawing No: C165-PRC-000-XX-DR-A-13-125-AB3
 Rev: