



**27 OLD JEWRY / NEWLY REFURBISHED FITTED OFFICES  
WITH PRIVATE TERRACES**

---

*TLG*



## 27 OLD JEWRY OFFERS THE PERFECT BLEND OF HISTORIC CHARM AND CONTEMPORARY WORKSPACES IN THE HEART OF THE CITY.

With its contemporary high quality office spaces, abundant natural light, and prime location, 27 Old Jewry offers a prestigious address for businesses looking to establish a strong presence in the City.

The reception area has been newly renovated with a modern and stylish design aesthetic. Each floor features an open-plan layout, offering a hassle-free solution for businesses seeking ready-to-use workspaces that promotes productivity, collaboration and innovation.







# A Schedule of Areas

Floor	Size - SQ FT	Staus
5th + Private Terraces	2,364	Available
4th + Private Terrace	3,146	Available
3rd	3,333	Available
2nd	LET	
1st	LET	



7/2

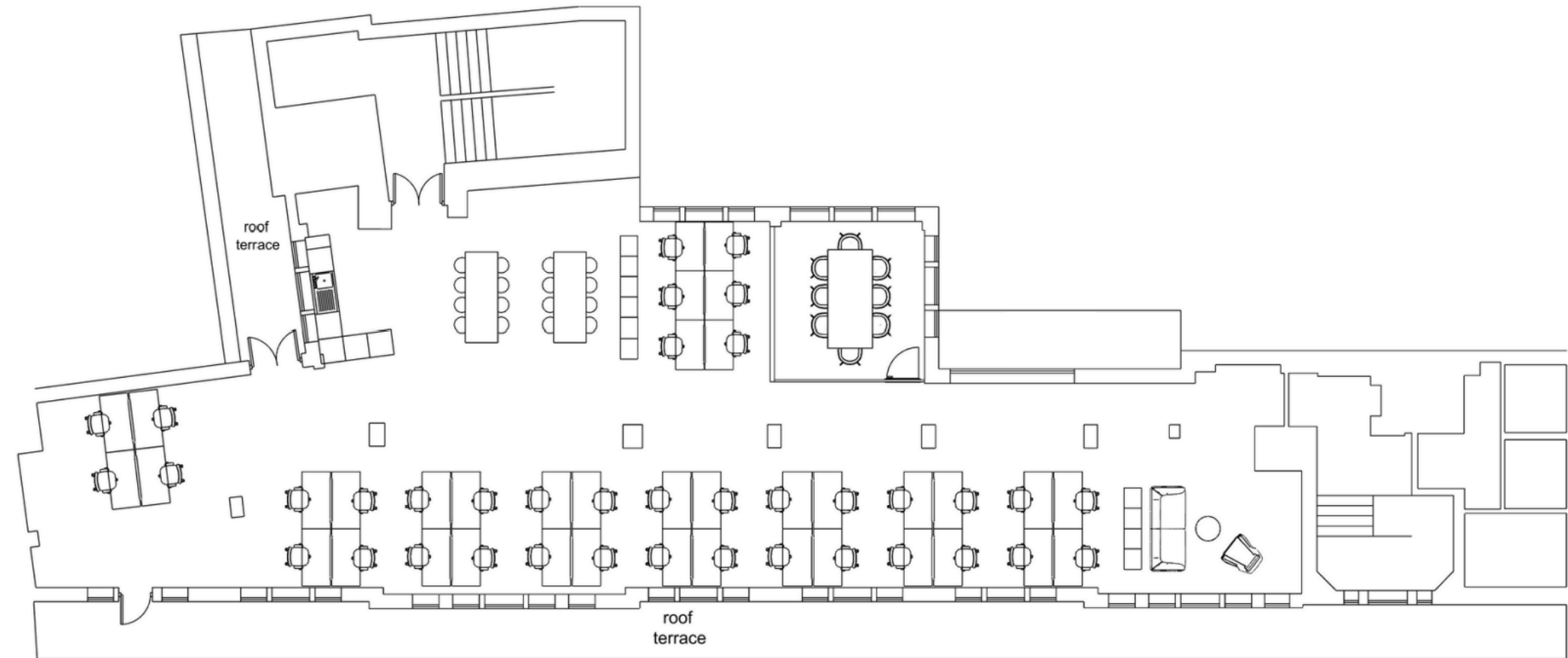




## INDICATIVE FIT OUT LAYOUT

2,364 SQ FT

- 1 x Meet & Greet
- 1 x Boardroom
- 32-38 fixed desks in open plan layout
- Kitchen & Breakout
- 2 x private terraces





11

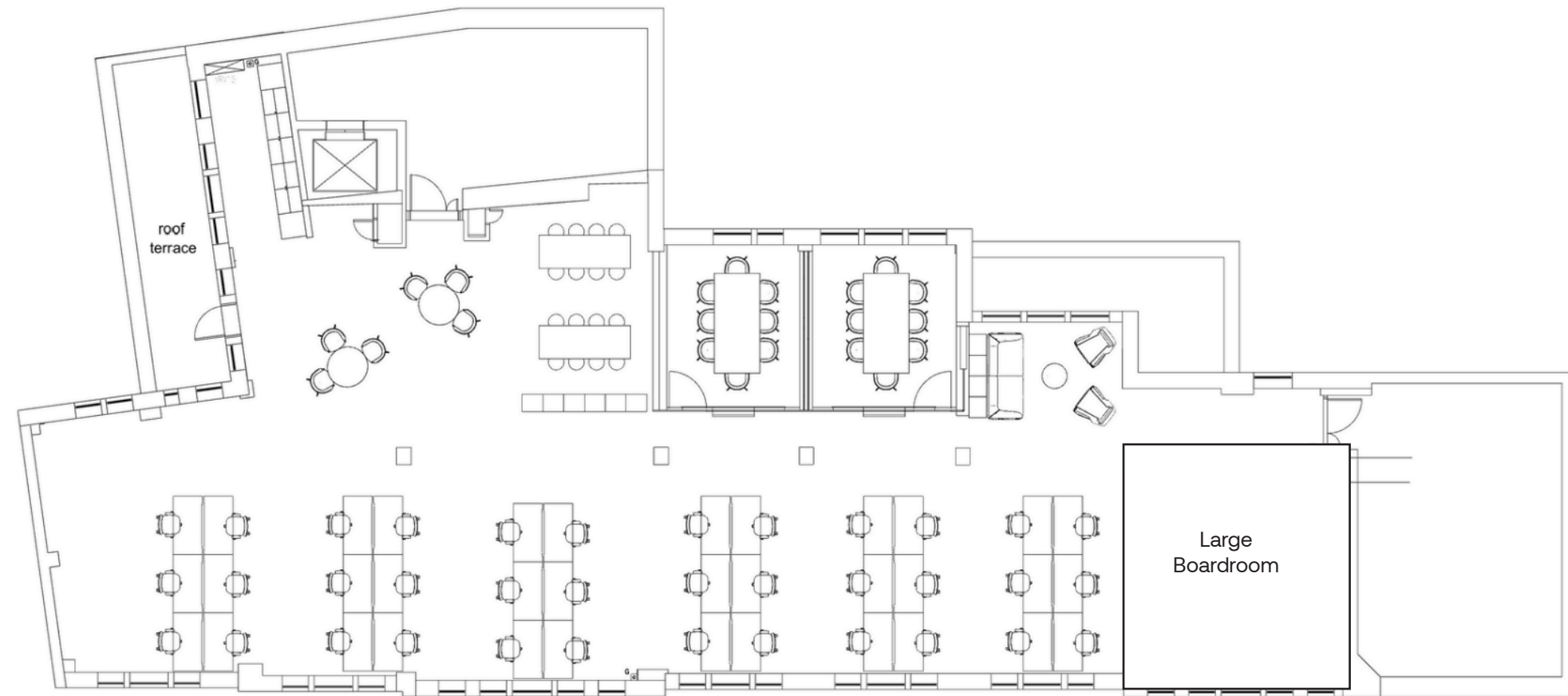




## INDICATIVE FIT OUT LAYOUT

3,146 SQ FT

- Meet & Greet
- 1 x Large Boardroom
- 2 x 8 Person Meeting Rooms
- 36-40 fixed desks in open plan layout
- Kitchen & Breakout
- 1 x private terraces





3rd





# Location

**27 OLD JEWRY IS IDEALLY POSITIONED IN THE HEART OF THE CITY OF LONDON, JUST MOMENTS FROM BANK, ST PAUL'S, AND MOORGATE STATIONS.**

This highly sought-after location is a magnet for leading businesses and professionals from across the globe. Surrounded by iconic landmarks, exceptional dining and retail amenities, and a thriving cultural scene, Old Jewry offers unparalleled connectivity and immediate access to the very best the City has to offer.





Get in  
Touch

## Team TLG

Phone / +44 203 285 8300

Email / [hello@tlg.london](mailto:hello@tlg.london)

Web / [tlg.london](http://tlg.london)

Social / [tlg-london](https://www.instagram.com/tlg-london)

---

MISREPRESENTATION ACT/COPYRIGHT/DISCLAIMER – TLG London Limited, for themselves and for the Lessor of this property, whose agents they are, give notice that (1) the particulars and any further information communicated by any means to potential Lessees of the property described in the particulars, or their advisers, in connection with the possible letting of the property are provided solely for the purpose of assisting potential lessees in deciding whether they wish to proceed with further investigation of the property and do not constitute either the whole or any part of the invitation, offer or contract for lease of the property; (2) all descriptions, dimensions, references to condition and necessary permissions for use and occupation and other details are given in good faith and are believed to be correct as at the date of the particulars (or the date of the relevant information if earlier). However, potential lessees are not entitled to rely on them as statements or representations of fact but should satisfy themselves by searches, enquires, surveys and inspections or otherwise with regard to the accuracy of such details. No responsibility or liability is or will be accepted by TLG London Limited, the lessor of the property or any of their respective subsidiaries, affiliates, directors, officers, representatives, employees, advisors, or agents for any loss or damage suffered by any party, resulting from reliance on the particulars or any other information communicated by any means to that party, or its advisers, in connection with the possible letting of the property. No person in the employment of TLG London Limited or the lessor has authority to make or give any representation or warranty, express or implied, in relation to the property. December 2025.