

● ● ● REIMAGINED **ULTRA-URBAN** WAREHOUSING

Warehouse / trade counter units
in Ealing, currently undergoing
refurbishment.

4,522 - 43,291 sq ft

Available now

145-147 Boston Road, Hanwell, London, W7 3SA

Bloom Ealing

An aerial photograph of a large industrial building complex in Ealing, London. The building has a white corrugated metal roof and brick walls. It is surrounded by other buildings, trees, and a parking lot. A blue overlay is on the left side of the image, containing text about the property. The word 'Bloom' is in a large, white, sans-serif font, and 'Ealing' is in a smaller, white, sans-serif font.

Bloom Ealing

A multi-let industrial estate comprising of four units, set to be refurbished. **Units can be let individually or combined on request.**

This site offers the perfect opportunity for companies seeking to establish themselves within West London's thriving industrial and logistics market. Its strategic location provides easy access to the A40, connecting you directly to Central London and the M4.

This well connected development is just a short walk away from Hanwell and Boston Manor stations, and with Heathrow Airport just a 24 minute drive away, this space offers a significant advantage for businesses with national or international operations.

145-147 Boston Road, Hanwell, London, **W7 3SA**

BLOOM EALING



A workplace to be proud of

Like all Bloom estates, Bloom Ealing is designed to help your operation run as seamlessly and sustainably as possible, all while creating a working environment employees can thrive in.

With 3-phase power up to 407 kVA, electric vehicle chargers, and roof lights for enhanced natural lighting, Bloom Ealing is the ideal space to help your business grow - all just a stone's throw from central London.

Pricing is available on application.

Unit	Ground Floor Warehouse	First Floor Warehouse	Ground Floor Office	First Floor Office	Total
	(sq ft)	(sq ft)	(sq ft)	(sq ft)	(sq ft)
Unit 1	3,772	-	375	375	4,522
Unit 2	14,994	-	1,277	1,345	17,616
Unit 3	8,581	-	957	957	10,495
Unit 4	4,304	4,112	572	839	9,827
Ancillary	831				831
Total					43,291

Units 1, 2, 3 can be combined to create a larger space if required.

(Measurements are indicative and calculated approximately on a Gross External basis).



Unit 1

- 

Currently undergoing refurbishment
- 

EPC A targeted
- 

Level access loading doors
- 

2 car parking spaces*
- 

c.5.8m clear internal eaves height
- 

EV chargers
- 

LED lighting
- 

Roof lights for enhanced natural lighting
- 

3-phase power 69 kVA
- 

VRF comfort cooling & heating
- 

Ancillary office accommodation
- 

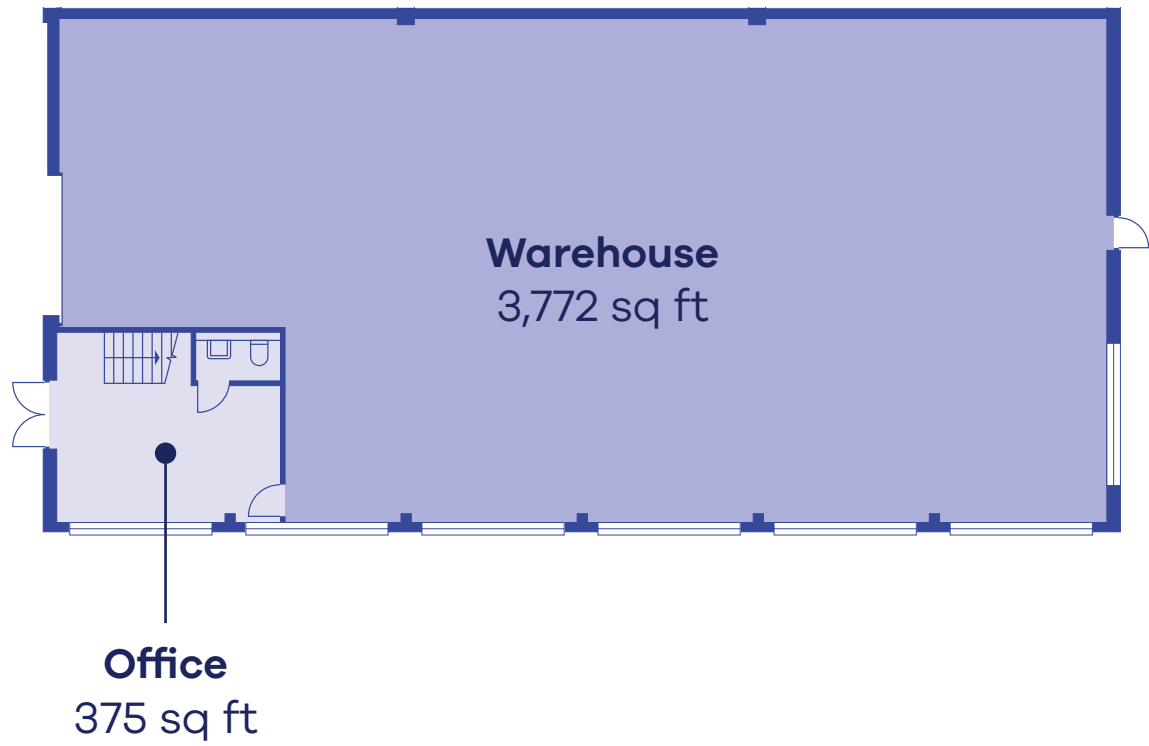
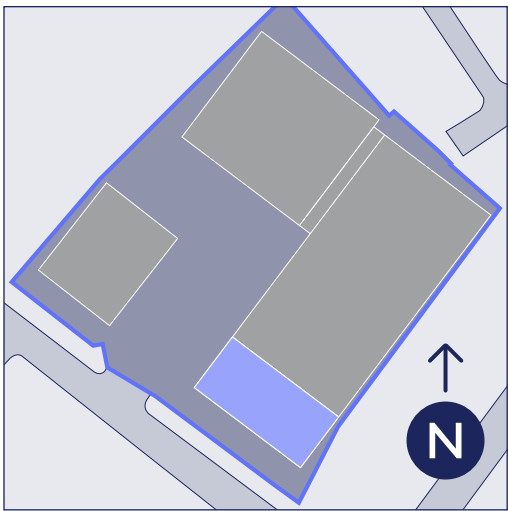
Newly resurfaced concrete yard

*Additional parking bays outside of the estate are available upon request.

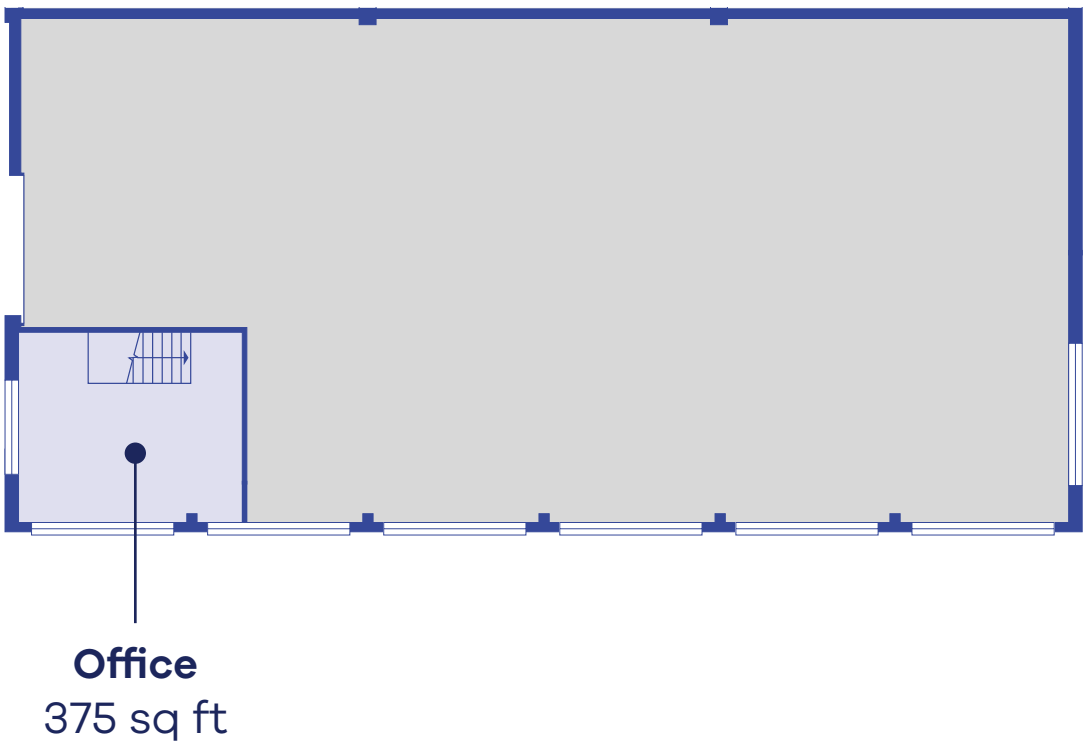


145-147 Boston Road, Hanwell, London, **W7 3SA**

BLOOM EALING



Ground Floor



First Floor

Unit 2

- 

Currently undergoing refurbishment
- 

EPC A targeted
- 

Level access loading doors
- 

6 car parking spaces*
- 

c.5.8m clear internal eaves height
- 

EV chargers
- 

LED lighting
- 

Roof lights for enhanced natural lighting
- 

3-phase power 85 kVA
- 

VRF comfort cooling & heating
- 

Ancillary office accommodation
- 

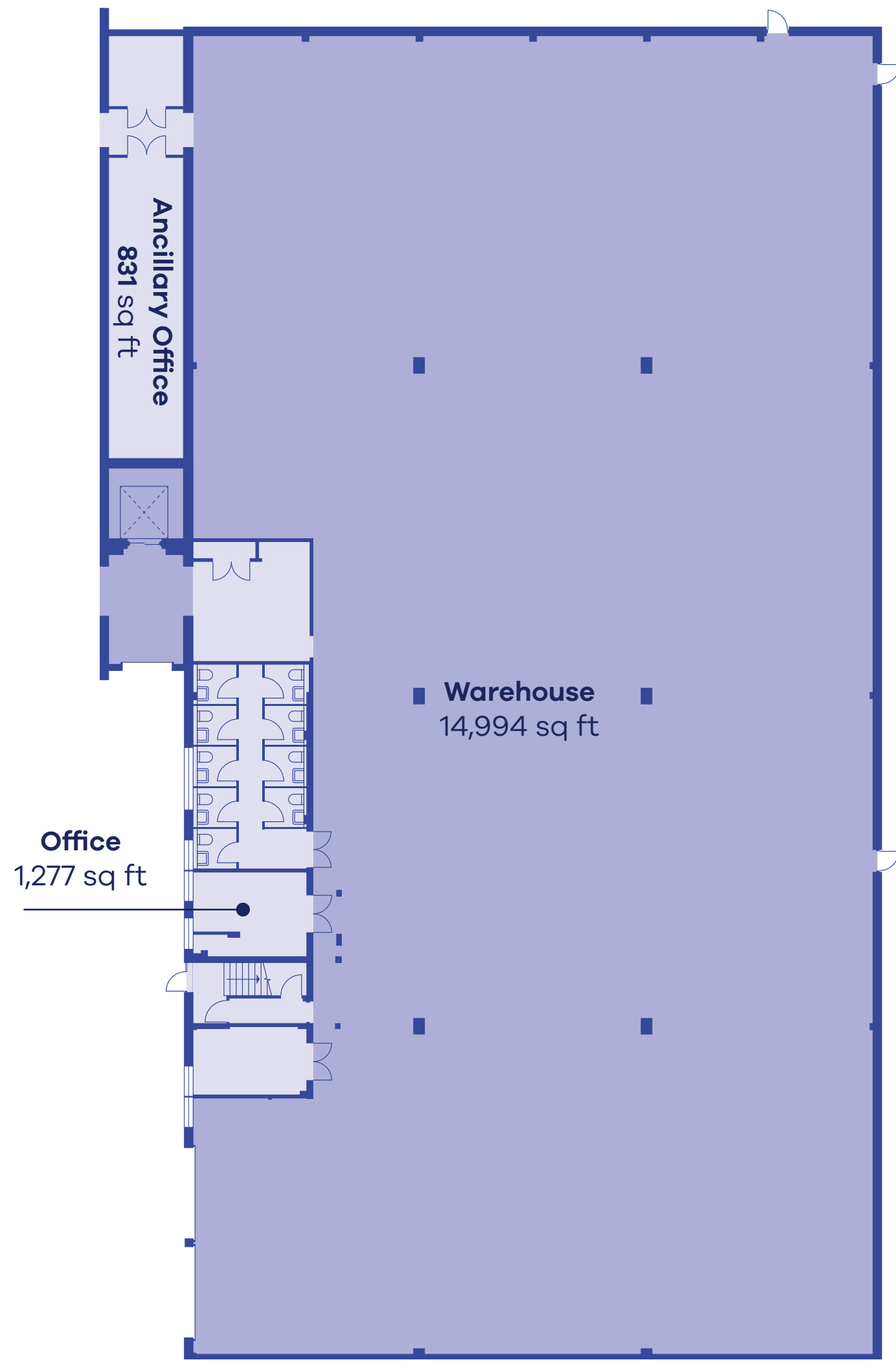
Newly resurfaced concrete yard

*Additional parking bays outside of the estate are available upon request.

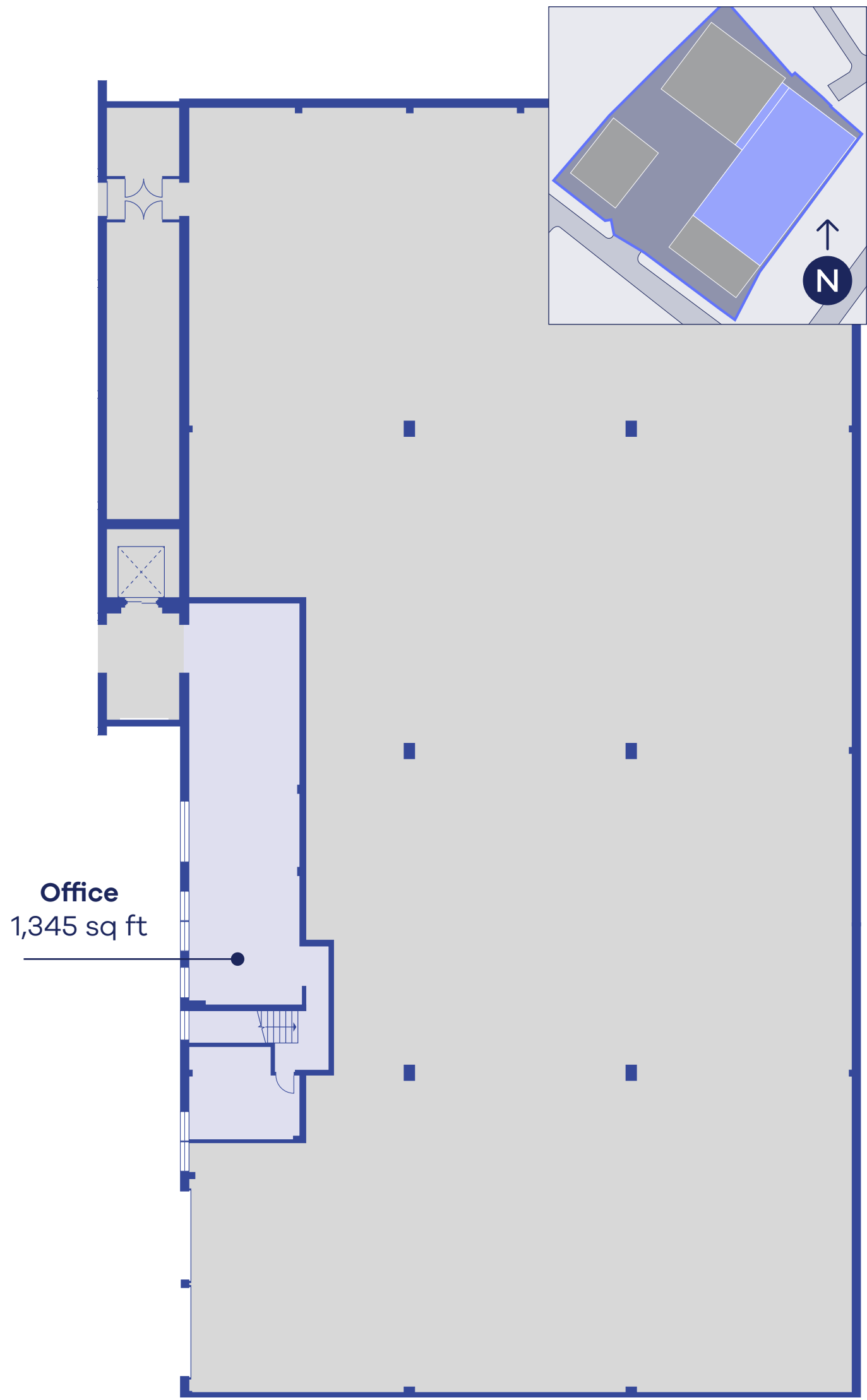


145-147 Boston Road, Hanwell, London, **W7 3SA**

BLOOM EALING



Ground Floor



First Floor

Unit 3

- 

Currently undergoing refurbishment
- 

EPC A targeted
- 

Level access loading doors
- 

7 car parking spaces*
- 

c.5.8m clear internal eaves height
- 

EV chargers
- 

LED lighting
- 

Roof lights for enhanced natural lighting
- 

3-phase power 180 kVA
- 

VRF comfort cooling & heating
- 

Ancillary office accommodation
- 

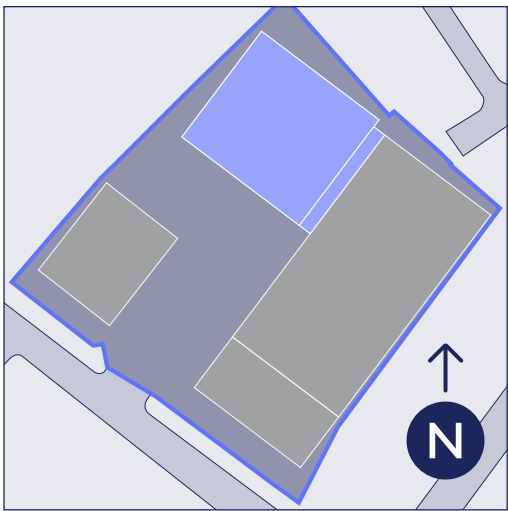
Newly resurfaced concrete yard

*Additional parking bays outside of the estate are available upon request.

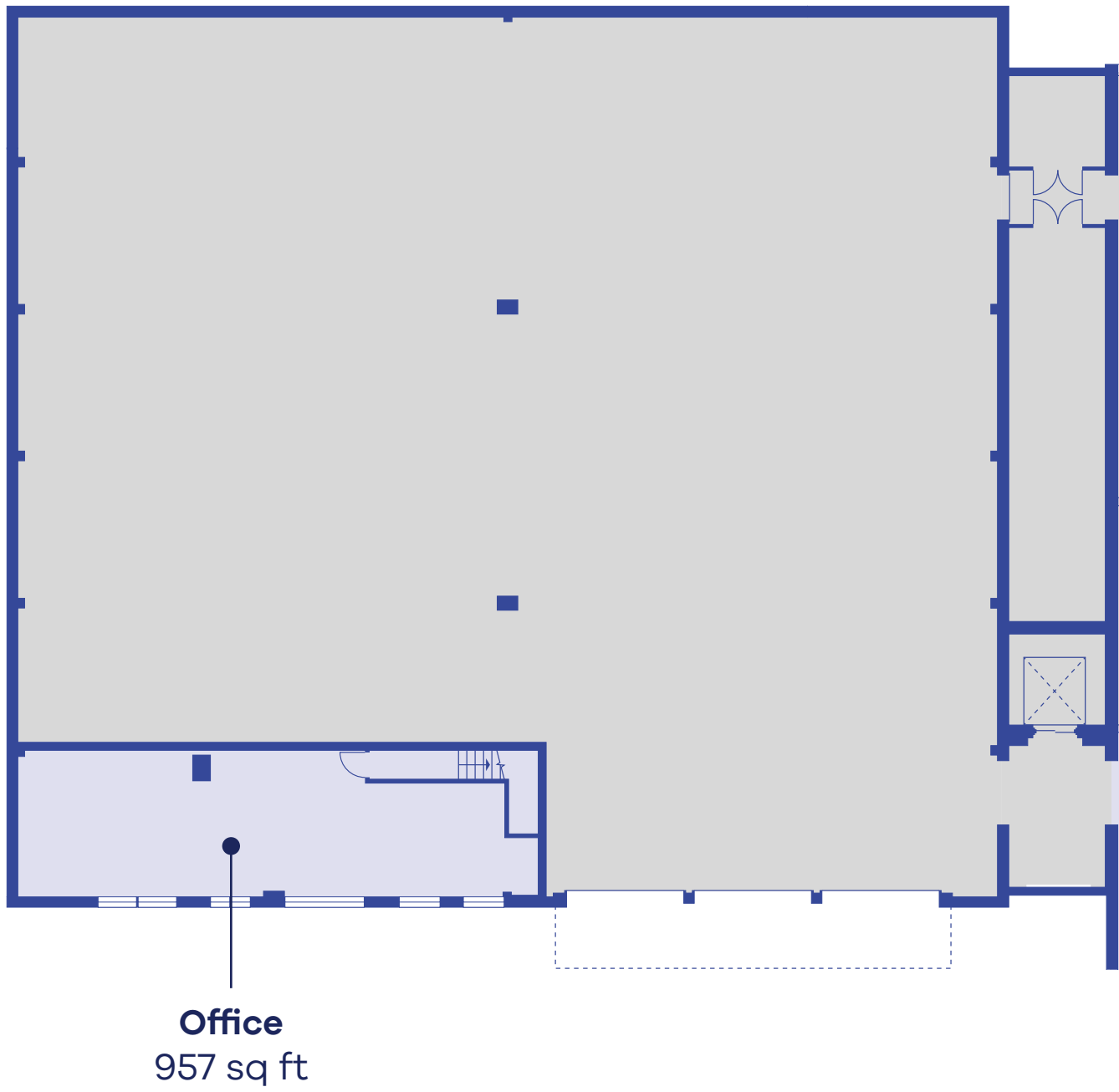


145-147 Boston Road, Hanwell, London, **W7 3SA**

BLOOM EALING



Ground Floor



First Floor

Unit 4

- 

Currently undergoing refurbishment
- 

EPC A targeted
- 

Level access loading doors
- 

7 car parking spaces*
- 

c.5.8m clear internal eaves height
- 

EV chargers
- 

LED lighting
- 

Roof lights for enhanced natural lighting
- 

3-phase power 69 kVA
- 

VRF comfort cooling & heating
- 

Ancillary office accommodation
- 

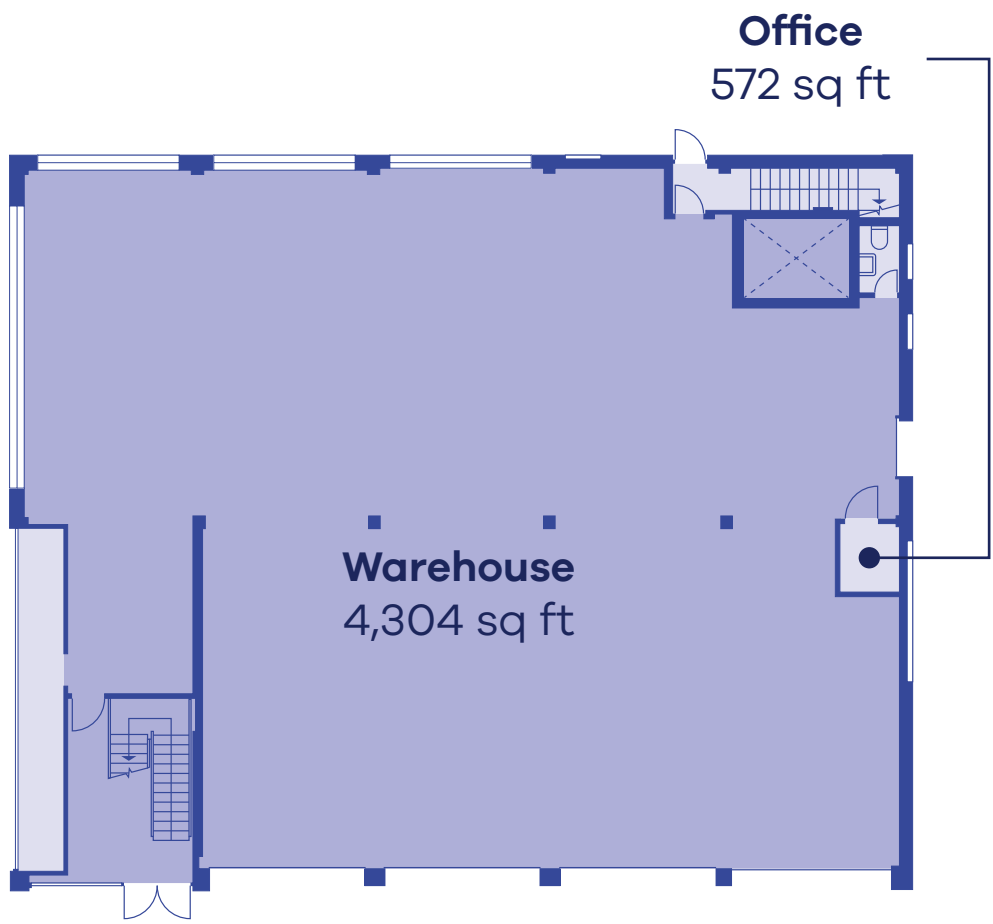
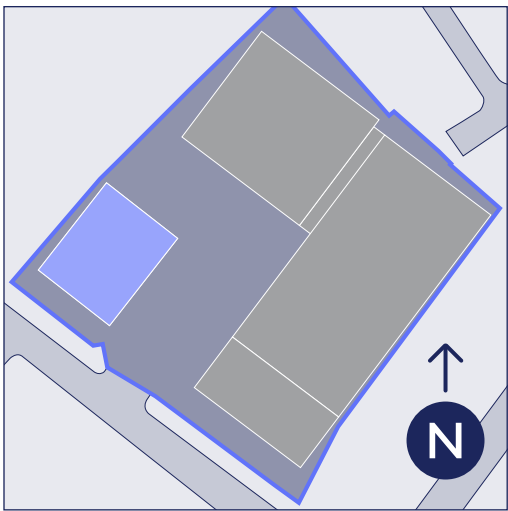
Newly resurfaced concrete yard

*Additional parking bays outside of the estate are available upon request.



145-147 Boston Road, Hanwell, London, **W7 3SA**

BLOOM EALING



Ground Floor



First Floor

UNITS 1-4
43,291 sq ft total

Unit 3

Unit 2

Cambridge Road

Unit 4

Unit 1

← 🚶 Hanwell (Elizabeth Line)
🚗 6 mins

✈️ Heathrow Airport
🚗 24 mins

Boston Road




🚶 Boston Manor (Piccadilly Line) →
🚗 3 mins

Get where you need to be

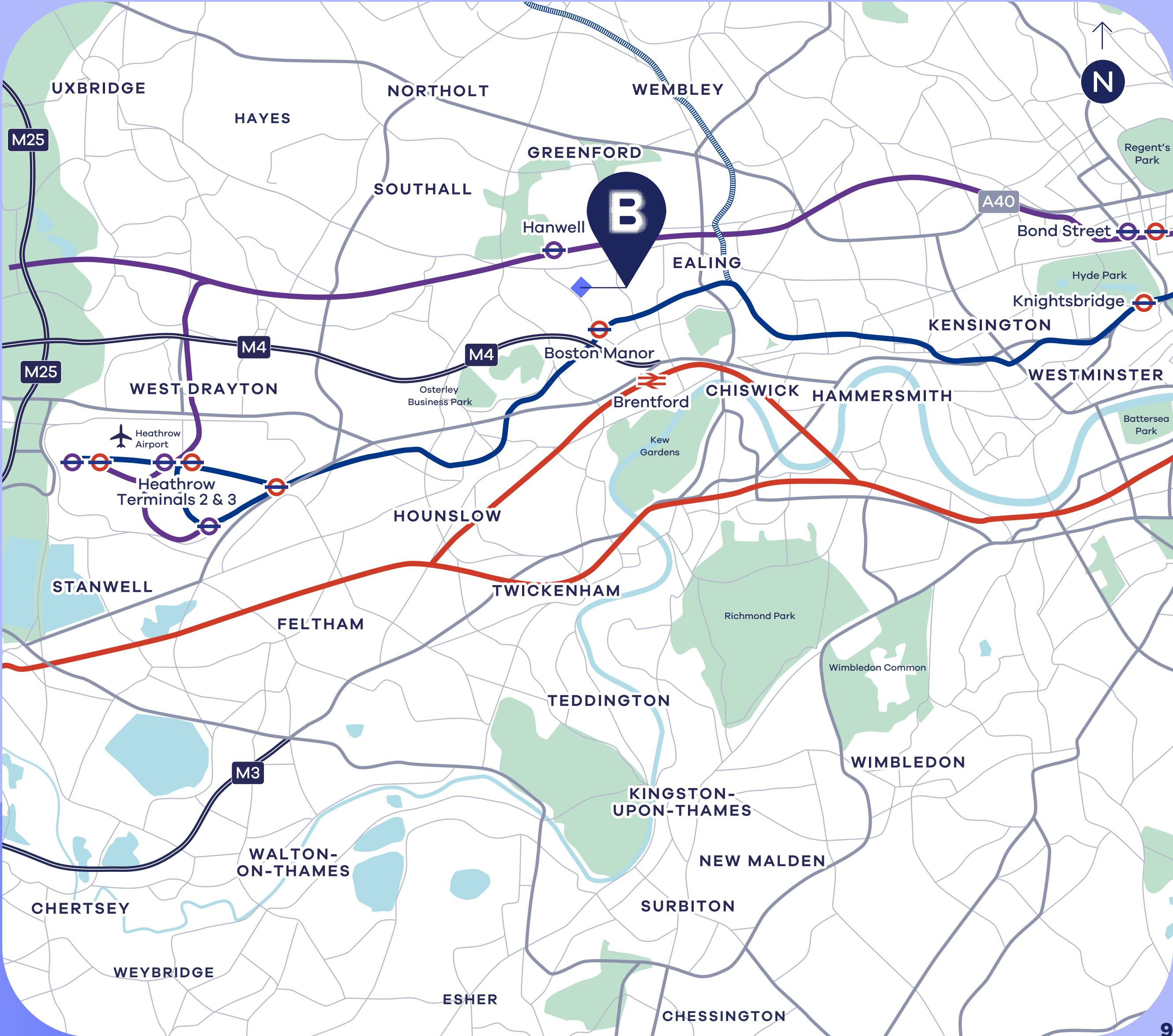
Bloom Ealing is strategically placed to provide rapid transport links to Heathrow Airport and Central London. The A4 and A4020 are just moments away via Boston Road.

Hanwell station is just a short walk away and offers train and bus services into the city centre (Elizabeth line). The site is a 7-minute drive to Brentford station where you can reach London Waterloo in 30 minutes via South Western railway services.

A4020	0.25 miles
A4	1.8 miles
M4 (Junction 2)	2.7 miles
A40	3.5 miles
Heathrow Airport	6.5 miles
Central London	10.3 miles
London City Airport	30 miles

Boston Manor		3 mins
Hanwell		6 mins
West Ealing		7 mins
Brentford		7 mins
Heathrow Terminals 2 & 3		24 mins
Paddington		35 mins

Travel times taken from Google Maps and are subject to change. Map is approximate and for illustrative purposes only.



Reach new heights

Europe's largest airport is just 24 minutes away from the development, making international travel easily accessible. Heathrow Airport is connected to all major trading locations across the world, reaching 239 destinations in 89 different countries.



Meet your neighbours

Ealing is one of West London’s most well-established business locations, offering unparalleled access to Greater London and major arterial routes.

This vibrant borough is full of life, boasting abundant out-of-hours amenities and extensive green spaces to explore. Ealing is perfectly situated to be your base of operations, benefiting both your industrial needs and your workforce.

Bloom Ealing is a place people are proud to call their working home, with the buzz and amenities of the town centre nearby.

- 1

Tesco Express
- 2

Halfords Autocentre
- 3

Wickes
- 4

Big Yellow Self Storage
- 5

Selco Builders
- 6

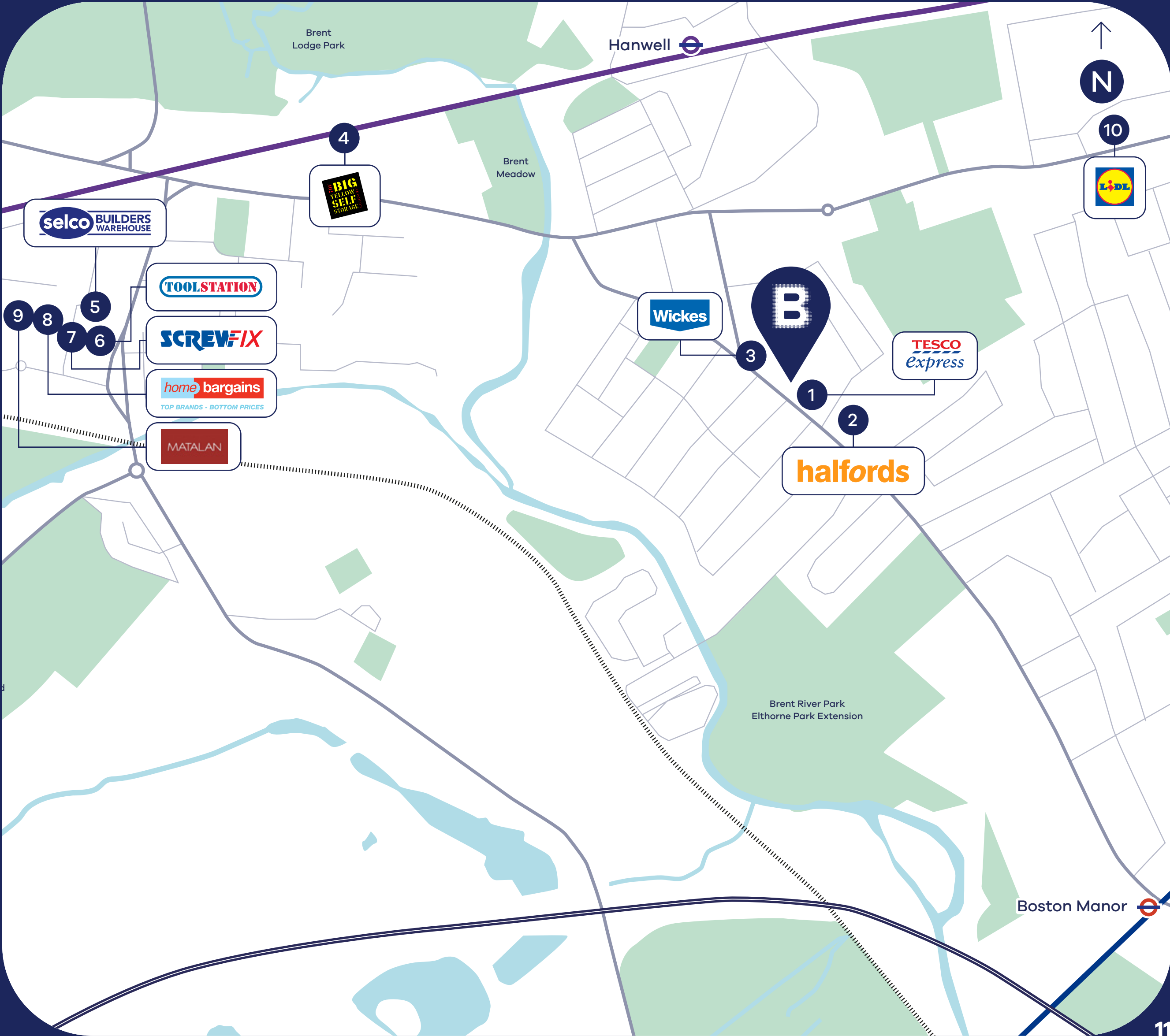
Toolstation
- 7

Screwfix
- 8

Home Bargains
- 9

Matalan
- 10

Lidl



Map is approximate and is for illustrative purposes only.

Local insight

3 mile radius

443k

Population projection by 2027

258k

Employees in the local area

169k

Projected households by 2027

£47k

Average household income per annum.



Bloom

URBAN WAREHOUSES

For more information:

visit: bloom-urban.com

email: enquiries@bloom-urban.com

For letting enquiries:



Alex Kington

alex.kington@logixproperty.com

07717 704 538

Callum Moloney

callum.moloney@logixproperty.com

07815 692 996



James Miller

james.miller@jll.com

07702 975 222

James Newton

james.newton1@jll.com

07701 230 718



Nick Train

n.train@vokins.co.uk

0208 400 8889

John Vokins

j.vokins@vokins.co.uk

0208 400 8895

Our Portfolio