

**fisher
german**

Shoreditch & Spitalfields

35-41 Folgate Street
London, E1 6BX

5-50 Desks
Self Contained Offices

208 - 2,051 Sq.ft



Licence | £3,985 - £37,600 VAT pcm



Accommodation

Description

35-41 Folgate Street is a vibrant, design-led workspace with a focus on community and collaboration, located in the heart of London's Spitalfields and Shoreditch area. The property features a stunning atrium, a residents' garden, and a roof terrace with skyline views. It offers flexible office solutions, including private offices, dedicated desks, and coworking spaces, all with a range of amenities and services.

Licence Term

New Licences are available for a term by arrangement.

Accommodation

Desks	Size Sq.ft	Price (Monthly)	Available
5	208	£3,985	Now
10	477	£7,990	October 25
11	394	£8,765	Now
50	2,051	£37,600	September 25

Amenities



Meeting
Rooms



Roof
Terrace



Dog
Friendly



Kitchen



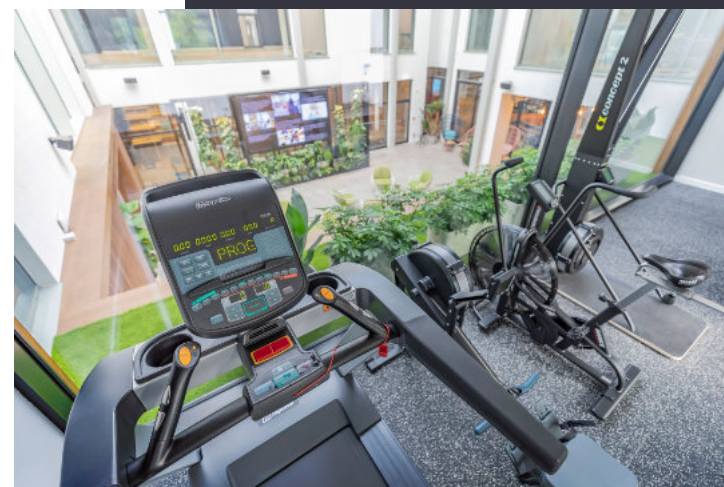
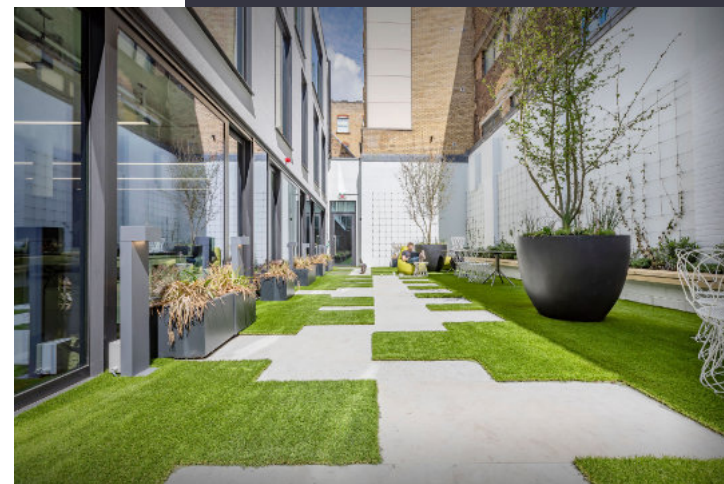
End of
Journey
Facilities



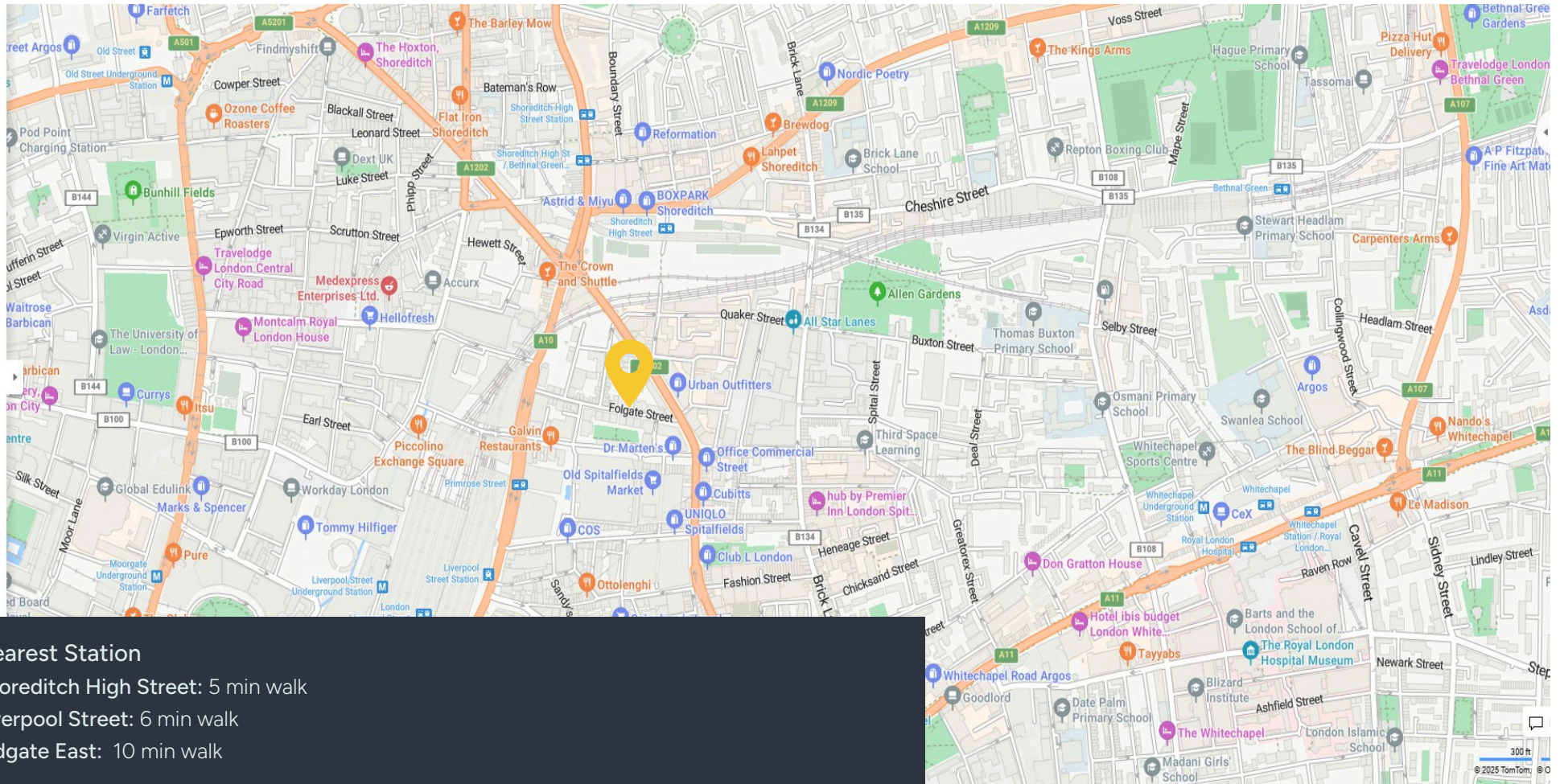
Bike
Racks



Phone
Booths



Location



Nearest Station

Shoreditch High Street: 5 min walk

Liverpool Street: 6 min walk

Aldgate East: 10 min walk

Contact us

Viewings by appointment only.

To arrange a viewing, please contact:



Doug Gordon

020 7747 3117

Doug.gordon@fishergerman.co.uk



Jessie High

020 7747 3142

Jessie.high@fishergerman.co.uk

Please note: Fisher German LLP and its Joint Agents give notice that: 1. They have no authority to make or give any representation or warranty on any property whether on their own behalf or on behalf of their clients or otherwise. 2. They do not owe any duty of care to you and assume no responsibility for any statements, representations, warranties or otherwise made in the particulars and you should not rely on those in the particulars. 3. The particulars are produced in good faith are set out as a general guide only and do not constitute or form an offer or a contract or part thereof. 4. Any photographs, descriptions, plans, measurements, distances and any other details in the particulars are approximate estimates only taken as the property appeared at the time and should not be relied upon as factually accurate. 5. Fisher German assumes prospective purchasers/tenants have carried out inspections to satisfy themselves that the information in the particulars is correct.

Particulars dated August 2025. Photographs dated 2025.



This brochure is fully recyclable