



**CORINTHIAN
HOUSE**
CROYDON

A modern, brightly lit reception area with a polished wooden floor. On the left, there are two light blue armchairs and a small round wooden coffee table. In the center, there are two glass-fronted elevators. To the right, a long white reception desk is visible, with a person standing behind it. The background wall is a mix of dark wood and light-colored panels. The text "CORINTHIAN HOUSE" is overlaid in a white box in the top left corner.

CORINTHIAN HOUSE

MAKE AN IMPRESSION

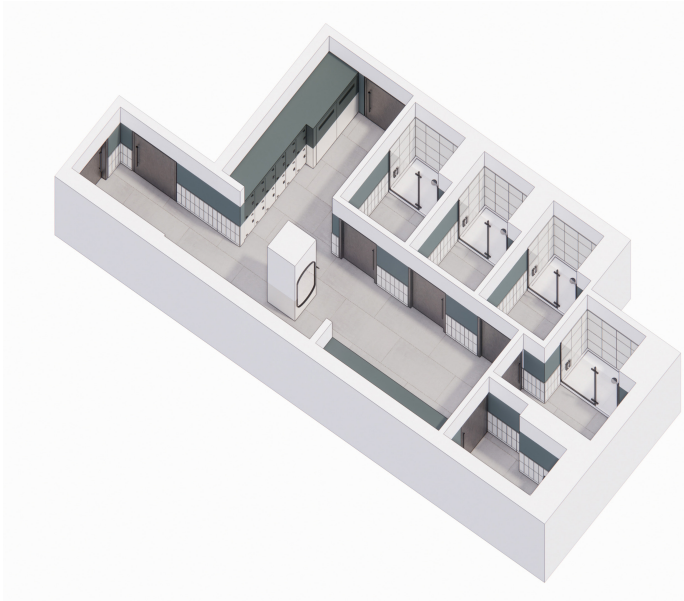
Walk into the newly refurbished reception and you will know you have found a place where you and your clients are going to feel immediately at home.

Corinthian House has a thriving tenant community and is home to a diverse mix of businesses in sectors such as finance, insurance, commodities and real estate.



Works underway to add to the Ground Floor disabled shower with basement showers and locker room, accessed internally from a new extended rear entrance.

New external secure Cycle store for 33 bicycles.



FLOOR PLANS

LET AVAILABLE

LEVEL 1

- SUITE A = 1,002 SQ FT
- SUITE B = 1,075 SQ FT
- SUITE C = 1,030 SQ FT
- SUITE D = 332 SQ FT
- SUITE E = 276 SQ FT
- SUITE F = 276 SQ FT

LEVEL 2

- SUITE A = 556 SQ FT
- SUITE B = 678 SQ FT
- SUITE C = 1,636 SQ FT
- SUITE D = 1,286 SQ FT
- SUITE E = 180 SQ FT

LEVEL L 3

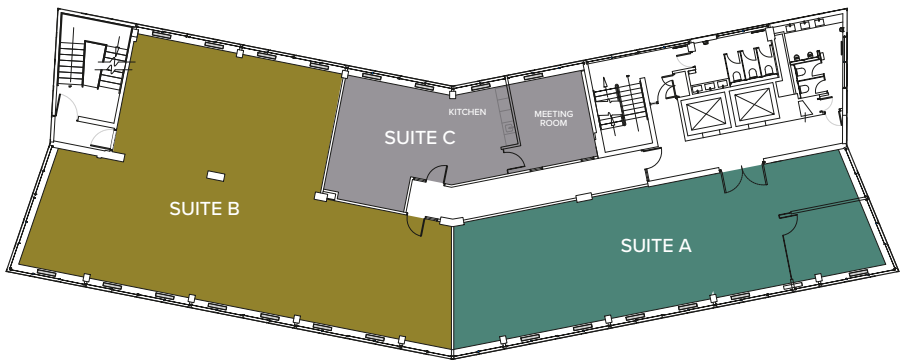
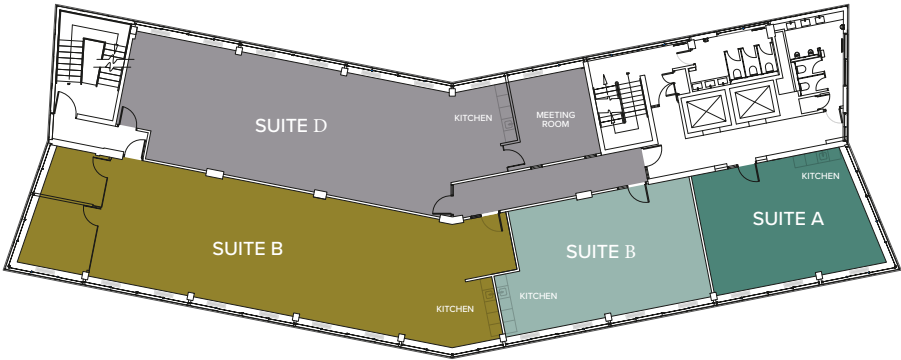
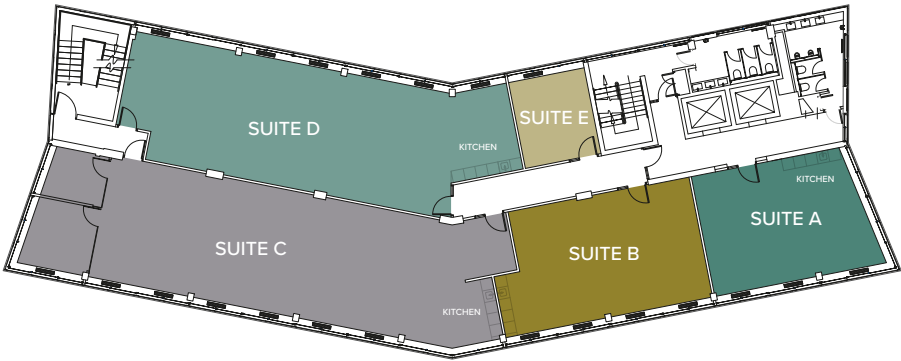
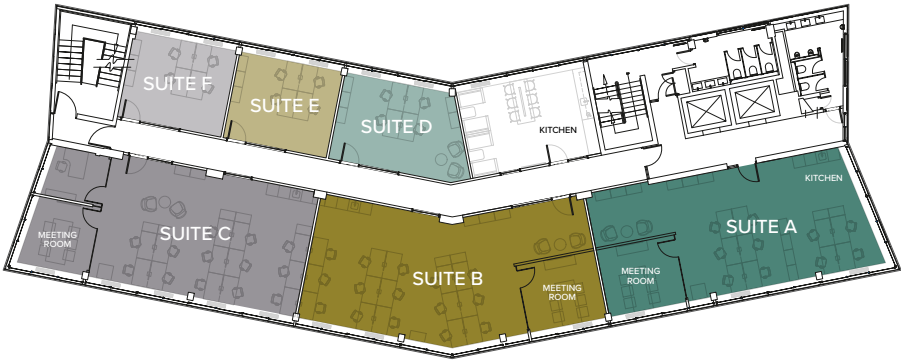
- SUITE A = 556 SQ FT
- SUITE B = 678 SQ FT
- SUITE B = 1,637 SQ FT
- SUITE D = 1,473 SQ FT

LEVEL 4

- SUITE A = 1,243 SQ FT
- SUITE B = 3,358 SQ FT

LEVEL 5

- SUITE A = 1,428 SQ FT
- SUITE B = 2,196 SQ FT
- SUITE C = 718 SQ FT



FLOOR PLANS

LET AVAILABLE

LEVEL 6

- SUITE A = 1,281 SQ FT
- SUITE B = 2,117 SQ FT
- SUITE C = 478 SQ FT

LEVEL 7

- SUITE A = 4,885 SQ FT

LEVEL 8

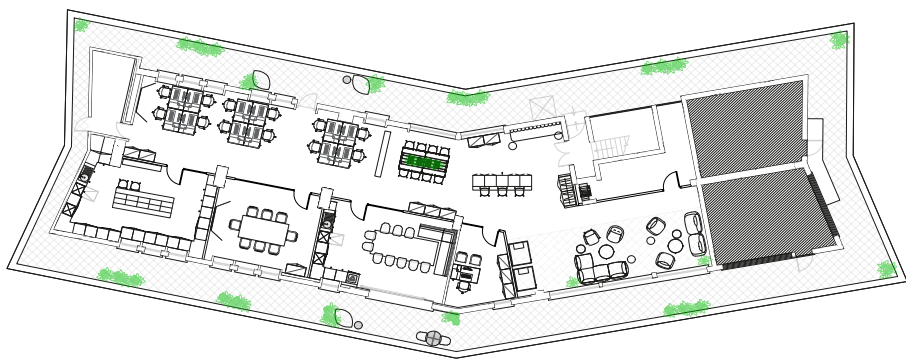
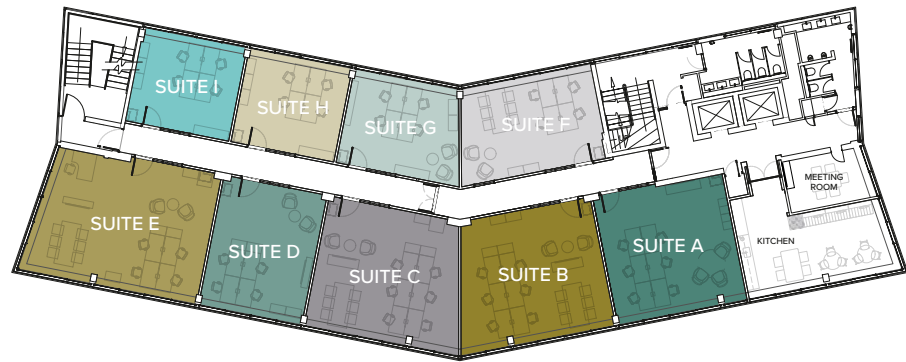
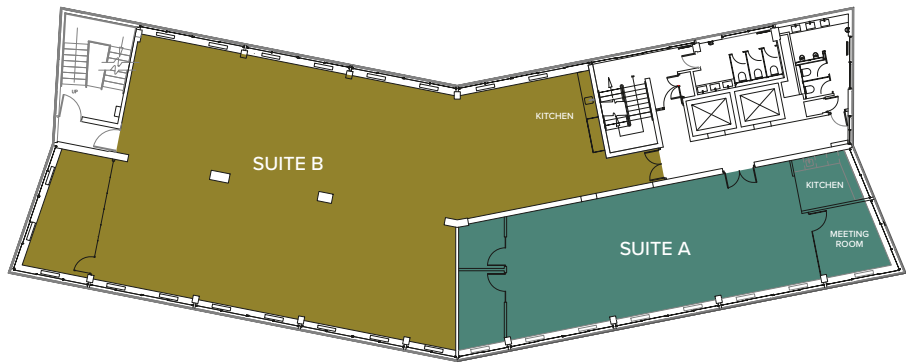
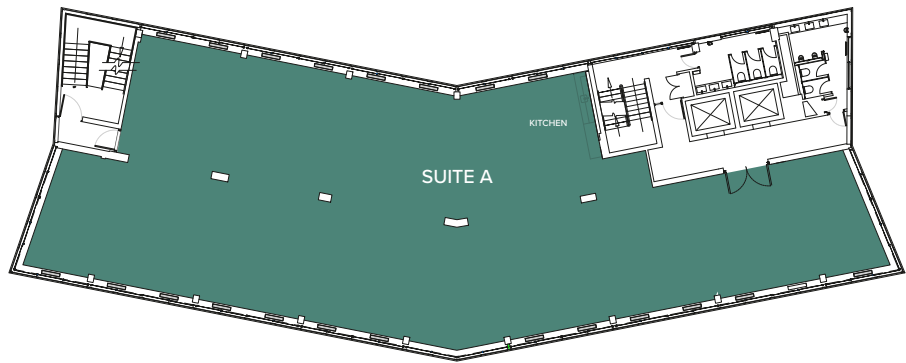
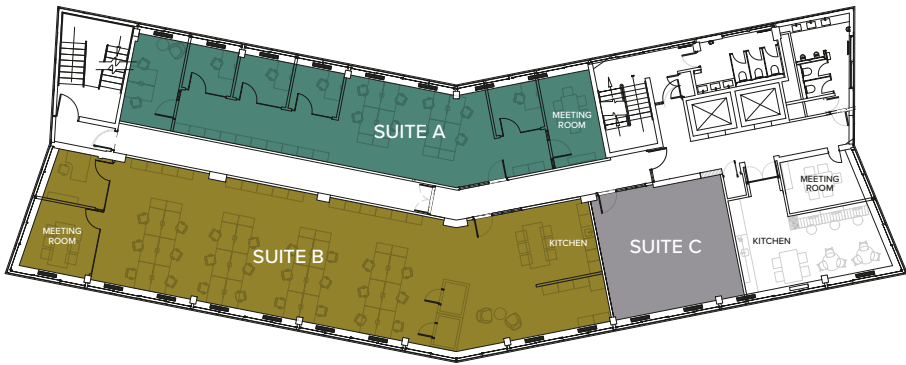
- SUITE A = 1,424 SQ FT
- SUITE B = 3,399 SQ FT

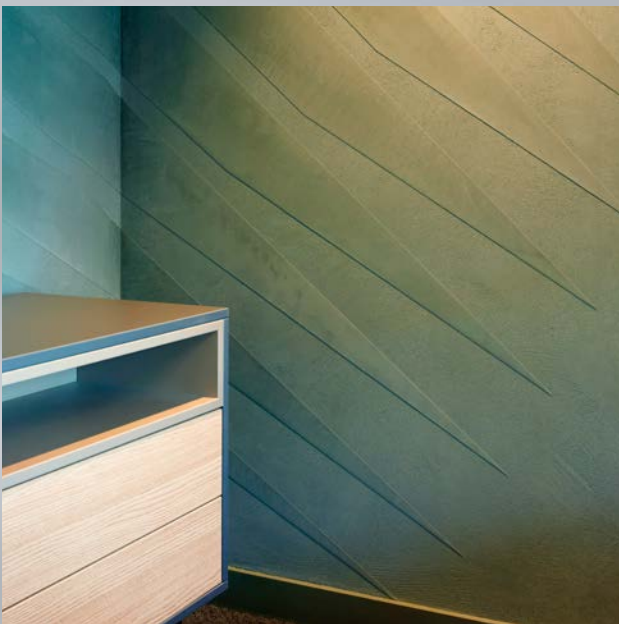
LEVEL 9

- SUITE A = 479 SQ FT
- SUITE B = 533 SQ FT
- SUITE C = 535 SQ FT
- SUITE D = 390 SQ FT
- SUITE E = 634 SQ FT
- SUITE F = 373 SQ FT
- SUITE G = 304 SQ FT
- SUITE H = 278 SQ FT
- SUITE I = 278 SQ FT

LEVEL 10

2,664 SQ FT





BUILDING HIGHLIGHTS

Providing an energy-efficient and comfortable environment, Corinthian House offers a host of premium building features, including a newly refurbished, manned reception.

The LED lighting and new air conditioning has helped the refurbished areas achieve an EPC B rating.



HIGH QUALITY KITCHENETTES



BOOKABLE MEETING ROOMS



HI SPEC MATERIALS AND FINISHING



LED LIGHTING



SUPERB NATURAL LIGHT



OPENABLE WINDOWS



SHOWER ROOM



NEW VRF AIR CONDITIONING IN ALL REFURBISHED SUITES



EPC RATING B (REFURBISHED AREAS)



ON-SITE PARKING



TWO NEW 13-PERSON LIFTS

COMING SOON



CHANGING ROOMS



CAR CHARGING



SECURE CYCLE STORE

ACCESSIBLE

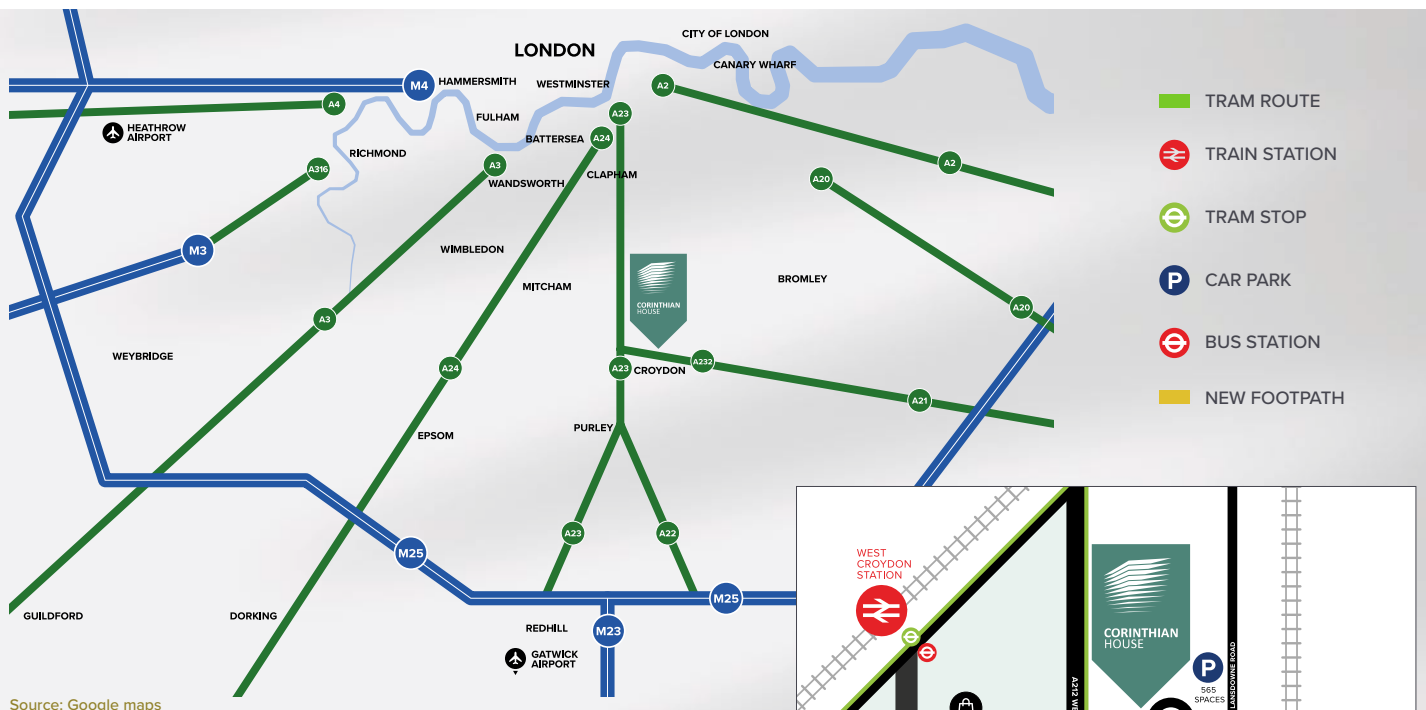
IN A PRIME POSITION

2mins 10mins

WALK TO EAST CROYDON STATION

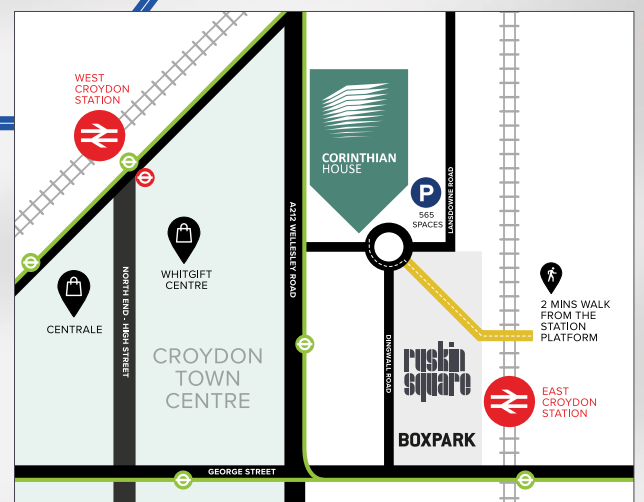
WALK TO WEST CROYDON STATION

Corinthian House occupies a prime position in East Croydon with a range of amenities nearby for occupiers. There are a wide range of food and beverage options within BoxPark, plus various nearby coffee offerings such as Starbucks, Mr Tinto, Pret a Manger and Caffe Nero. There are Co-Op and Amazon Fresh stores in close proximity plus the popular Trickle and Fern bar / restaurant offerings.



10miles

DRIVE TO THE M25 J7



ACCESSIBLE

CONNECTING YOU, FAST

Corinthian House is superbly located for transport connections, being located directly opposite the Ruskin Square entrance to East Croydon train station and within 200m of the platforms. East Croydon provides services to London Bridge from 13 mins, London Victoria from 16 mins, plus services to Gatwick Airport from 14 mins and southwards to the coast.

West Croydon station provides services into East London by way of the Windrush Overground Line plus services out to Sutton and Epsom.

Croydon also has the Tramlink, London's only tram network, providing services westwards to Wimbledon and eastwards to Beckenham Junction and New Addington.

Croydon is located just off the A23, providing road access into Central London and southwards to the M25 at Junction 7.

TRAIN TIMES TO LONDON (FROM EAST & WEST CROYDON)

DESTINATION	TIME
CLAPHAM JUNCTION	9 MINS
LONDON BRIDGE	13 MINS
LONDON VICTORIA	16 MINS
BLACKFRIARS	20 MINS
WIMBLEDON	29 MINS
ST PANCRAS	30 MINS

TRAIN TIMES SOUTH (FROM EAST CROYDON)

DESTINATION	TIME
GATWICK AIRPORT	14 MINS
REDHILL	19 MINS
BRIGHTON	48 MINS

Source: National Rail



16mins

DIRECT TRAIN TO
LONDON VICTORIA

1,320

TRAINS PER DAY STOP AT
EAST CROYDON STATION

24M

PASSENGERS GO THROUGH EAST
CROYDON STATION PER YEAR

29M

PASSENGERS USE THE
CROYDON TRAMS EACH YEAR



CORINTHIANCROYDON.CO.UK

AGENTS



DAMIAN LAMBOURN

T: 07796 953 360
E: dl@lcprop.com



THOMAS TARN

T: 07943 579296
E: ttarn@shw.co.uk

MASON GATES

T: 07867 232653
E: mgates@shw.co.uk

Important Notice. These particulars do not constitute any offer or contract and although they are believed to be correct their accuracy cannot be guaranteed and they are expressly excluded from any contract. W/LC/SHW Hollister HD2557 02/25