

# Oval Works



# A workplace with an authentic village vibe

Contents



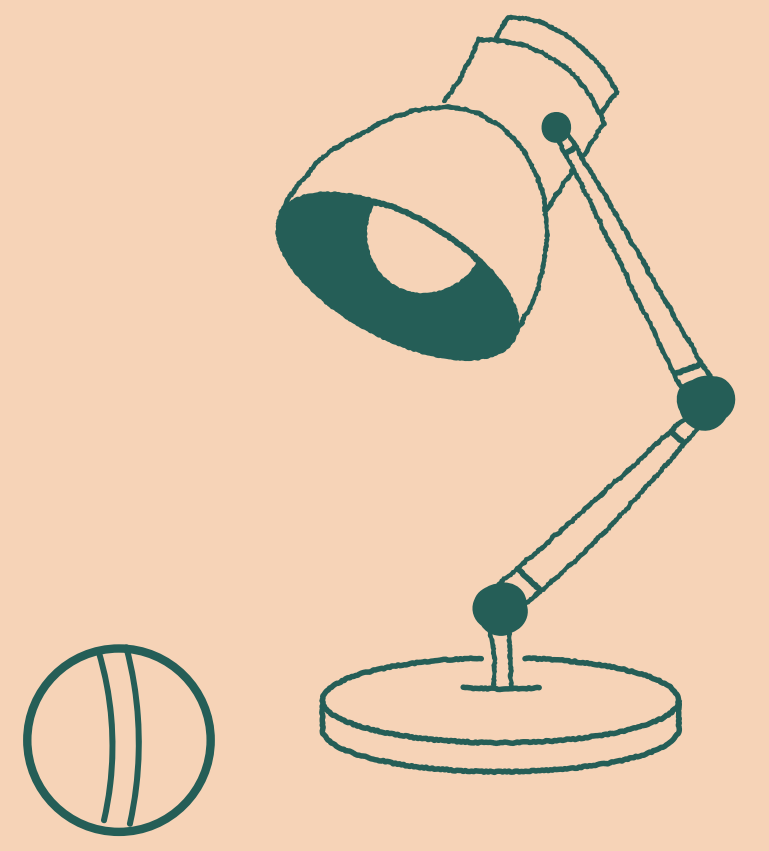
# OVAL WORKS



contact:  
head  
leighpollard.com



# The highlights



- 70,012 sq ft** workspace
- 12,400 sq ft** floor plates
- 3,881 sq ft** clubroom and terrace

St.James's Park

Waterloo

Victoria Station

Oval Works

Kennington Station

Vauxhall Station

Battersea Power Station

Oval cricket ground

# In the heart of London

Kennington Park

Oval Station

And next door to  
a **sporting icon.**  
Oval cricket ground.



# Oval is a magnet for Business

Oval, with 3 million sq ft of offices still to develop, already attracts innovative tech firms, inspiring nonprofits, artists and startups.

Vauxhall Park – 4 mins walk



Penguin Random House

ClearScore

Shark NINJA



ZAPP

TEAM LEWIS

runna

WSTW GAMES

# Three things that make this place so **special**

Part of Oval Village, Oval Works is built around a central plaza, shops and gardens. It's calm, perfect for fostering a **focused work culture**.

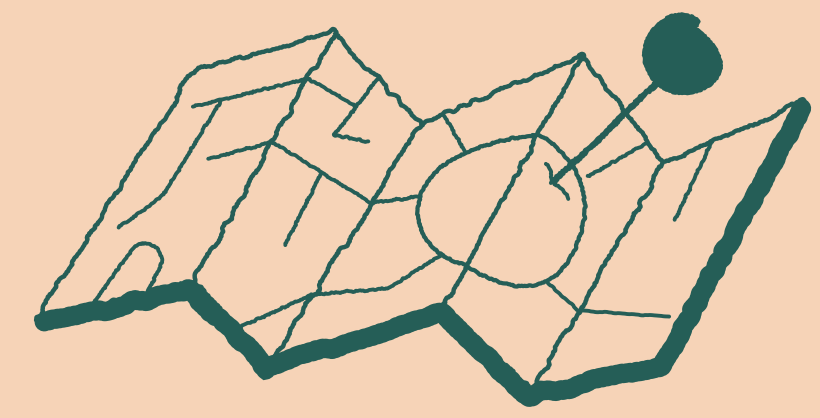
**Workplace**



**Community**



**Connectivity**



**70,012 sq ft of flexible, workspace** with a roof terrace, clubroom and shared areas all geared for hybrid work and wellbeing.

**5 mins from Oval** and **8 mins to Vauxhall** stations. Easy tube access, plus national rail. Also, excellent cycling routes to Central London and beyond.





Oval Works

# It takes a **village**

Oval Works sits within Oval Village, a new mixed-use development for an area in transformation.

Image courtesy of Berkeley Group.

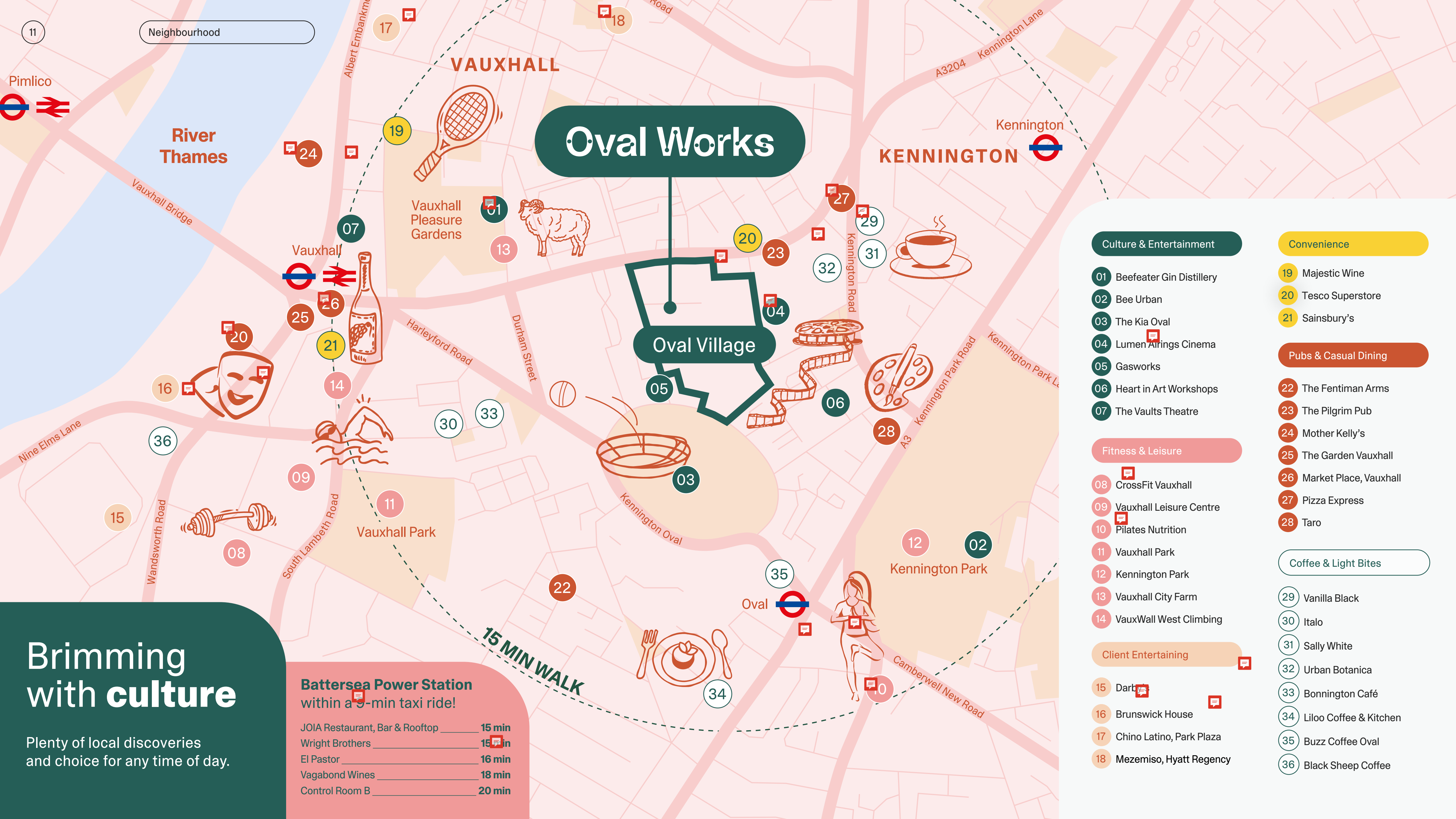
# A true neighbourhood story

Oval is a hidden gem - genuine, full of unique places and green spaces yet just minutes from central London.



Kennington Road - 4 mins walk





# Oval Works

## Oval Village

### Brimming with culture

Plenty of local discoveries and choice for any time of day.

**Battersea Power Station** within a 15-min taxi ride!

JOIA Restaurant, Bar & Rooftop	15 min
Wright Brothers	15 min
El Pastor	16 min
Vagabond Wines	18 min
Control Room B	20 min

#### Culture & Entertainment

- 01 Beefeater Gin Distillery
- 02 Bee Urban
- 03 The Kia Oval
- 04 Lumen Airings Cinema
- 05 Gasworks
- 06 Heart in Art Workshops
- 07 The Vaults Theatre

#### Fitness & Leisure

- 08 CrossFit Vauxhall
- 09 Vauxhall Leisure Centre
- 10 Pilates Nutrition
- 11 Vauxhall Park
- 12 Kennington Park
- 13 Vauxhall City Farm
- 14 VauxWall West Climbing

#### Client Entertaining

- 15 Dart
- 16 Brunswick House
- 17 Chino Latino, Park Plaza
- 18 Mezemiso, Hyatt Regency

#### Convenience

- 19 Majestic Wine
- 20 Tesco Superstore
- 21 Sainsbury's

#### Pubs & Casual Dining

- 22 The Fentiman Arms
- 23 The Pilgrim Pub
- 24 Mother Kelly's
- 25 The Garden Vauxhall
- 26 Market Place, Vauxhall
- 27 Pizza Express
- 28 Taro

#### Coffee & Light Bites

- 29 Vanilla Black
- 30 Italo
- 31 Sally White
- 32 Urban Botanica
- 33 Bonnington Café
- 34 Lilloo Coffee & Kitchen
- 35 Buzz Coffee Oval
- 36 Black Sheep Coffee



Tea House Theatre – 8 mins walk



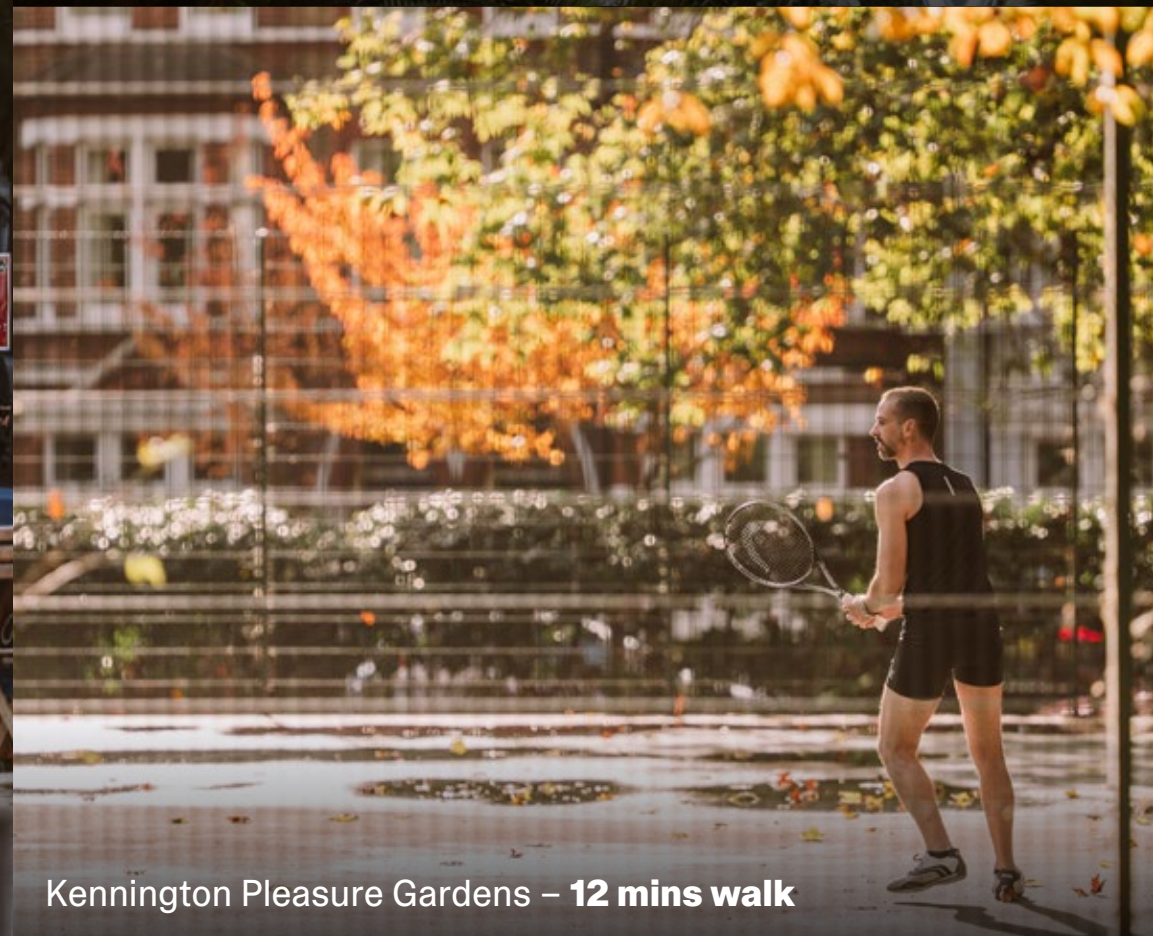
Market Place Vauxhall – 10 mins walk



Vauxhall Food & Beer Garden – 10 mins walk



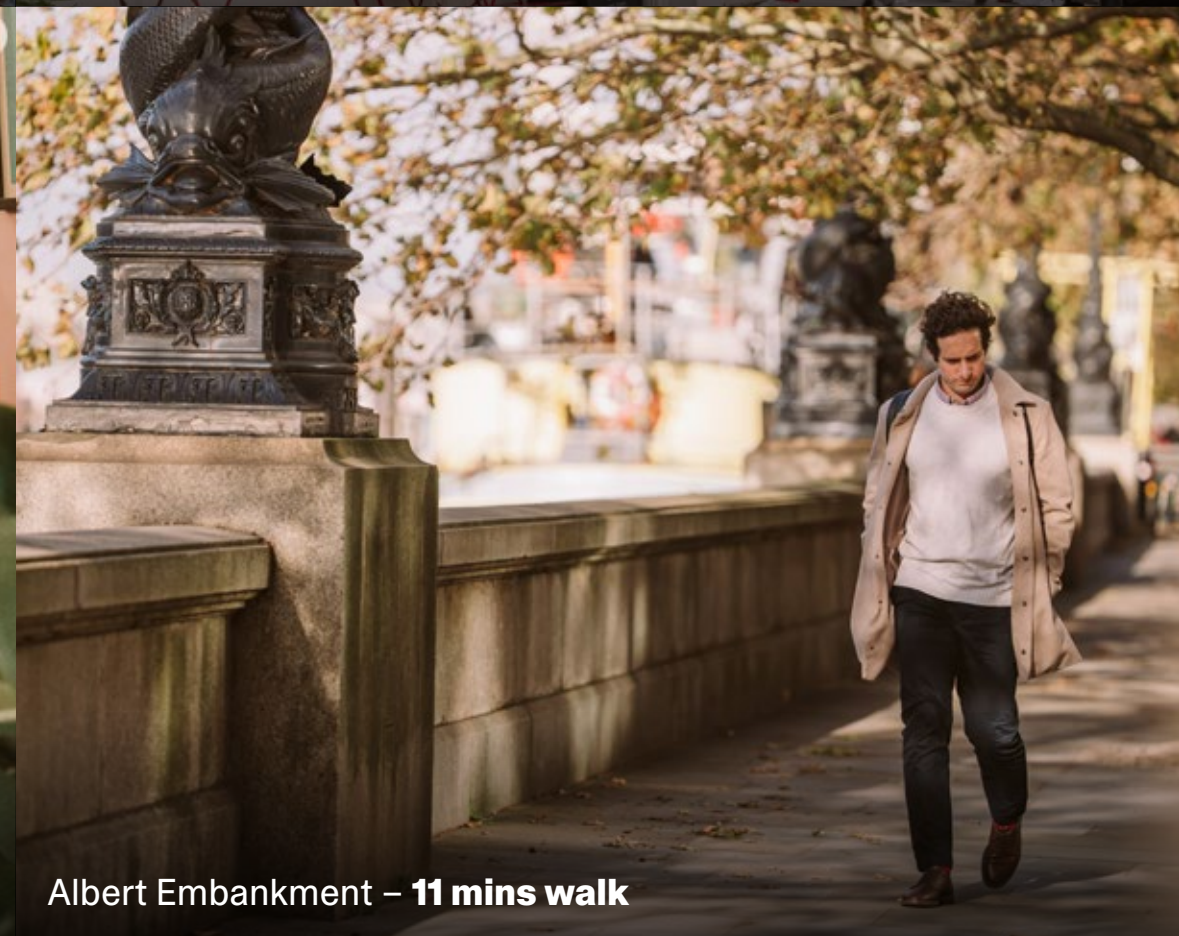
Sally White Cafe and Bakery – 8 mins walk



Kennington Pleasure Gardens – 12 mins walk



Urban Botanica – 7 mins walk



Albert Embankment – 11 mins walk



Kennington Park – 7 mins walk



Market Place Vauxhall – 10 mins walk



Vanilla Black – 8 mins walk

# Feel a part of something real

Oval reflects the evolving spirit of London – a place where an authentic village lifestyle thrives alongside a dynamic community of business trailblazers.



300m from Oval cricket ground (as the ball flies)

# Connections to all of central London



**5 minute** walk from the Northern Line at **Oval**.

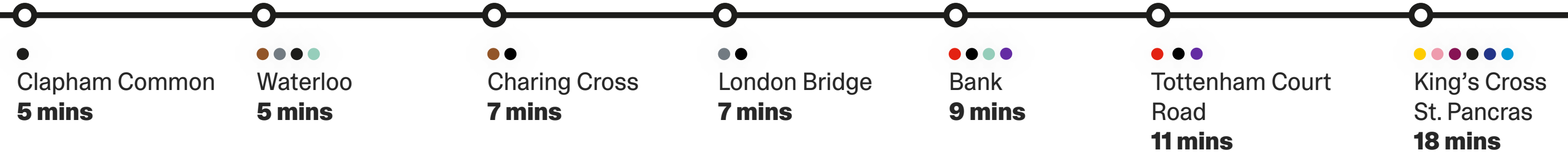
**8 minute** walk from the Victoria Line at **Vauxhall**.

Numerous bus routes within a short walk.



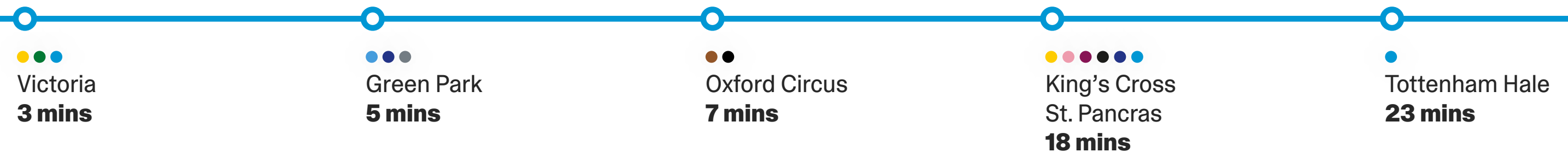
## 🚇 Oval (Northern line)

5 mins walk



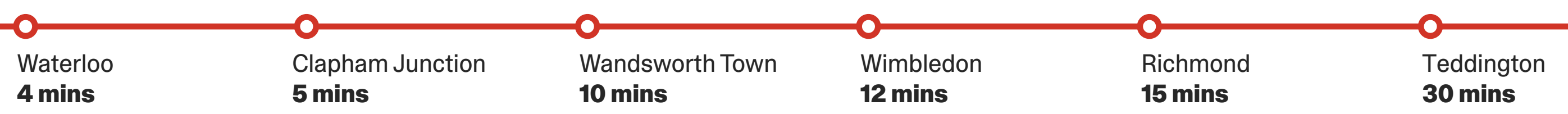
## 🚇 Vauxhall (Victoria line)

8 mins walk

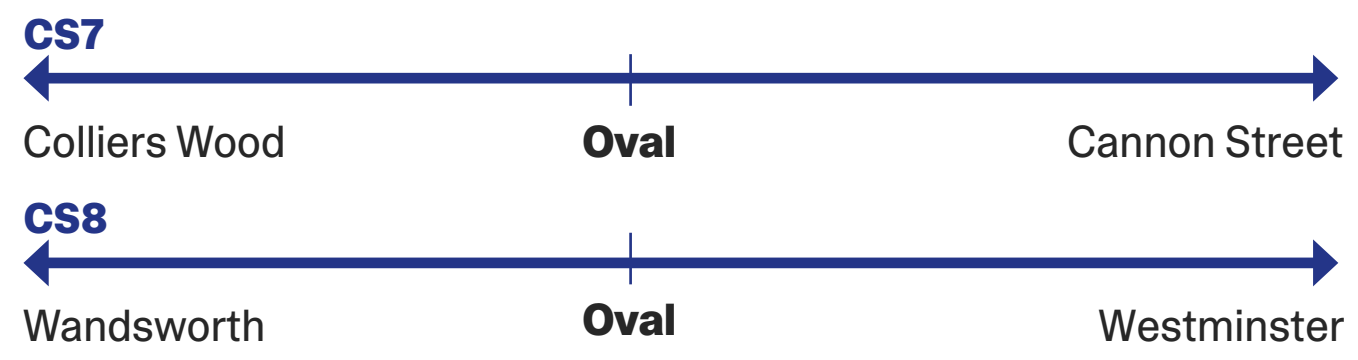


## 🚆 Vauxhall (South Western Railway)

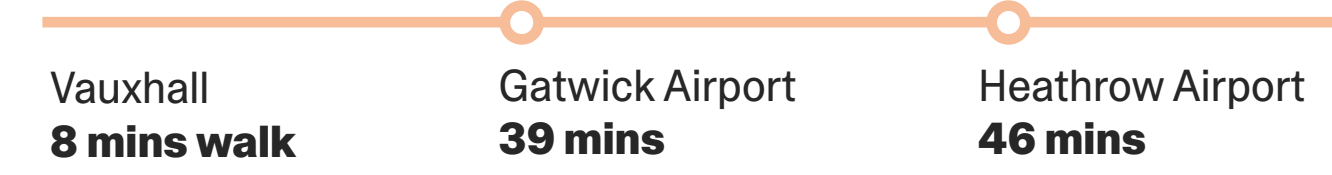
8 mins walk



## 🚲 Cycle



## ✈️ Airports





**Boosting your  
work life**

# Practical and purposeful

Oval Works goes beyond being a mere workspace, it's a tailored platform blending practicality and personality to boost your productivity.



Lobby style reception

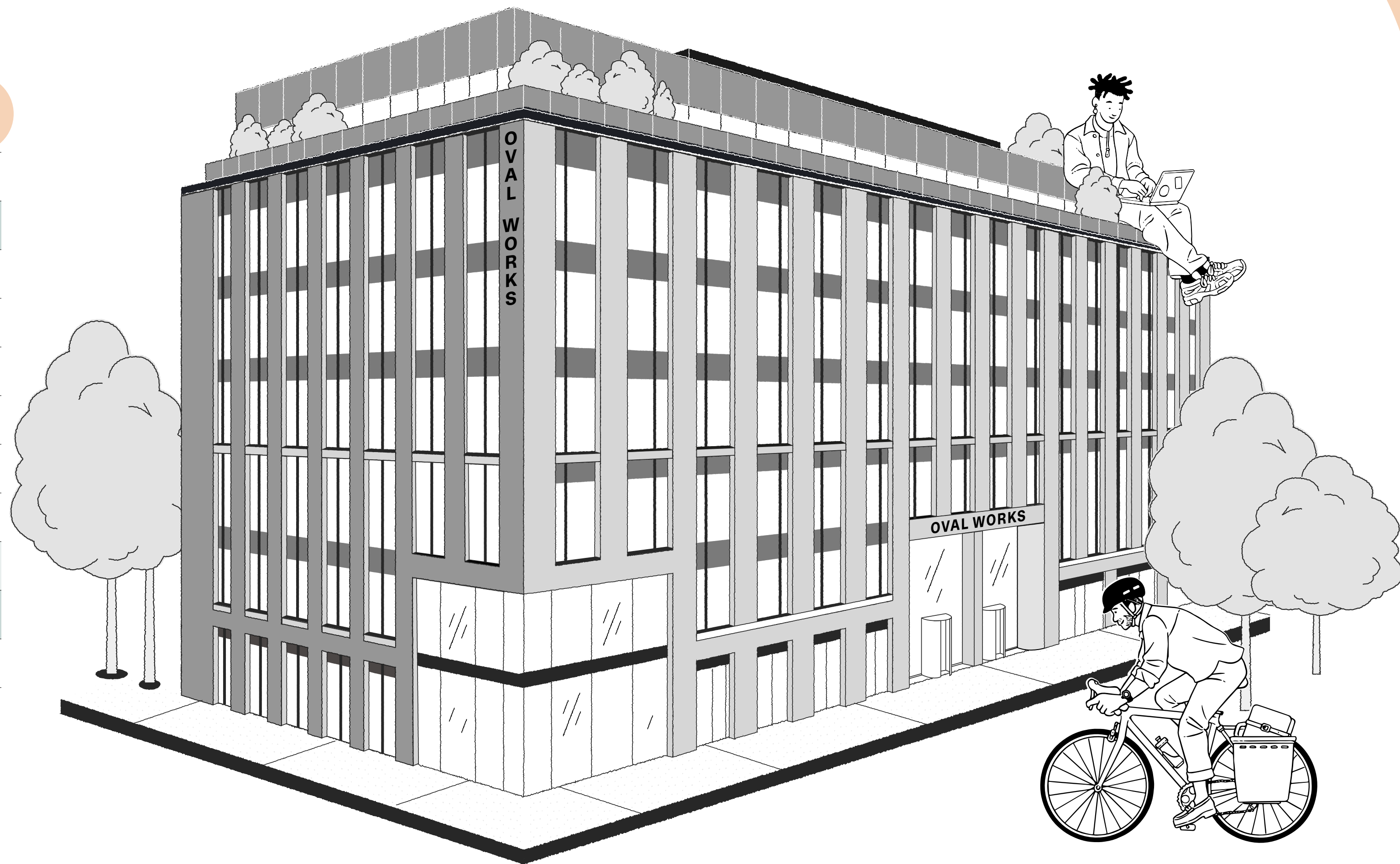
# The clubroom and terrace

Your adaptable hub for meetings and events, a 2,005 sq ft space designed for socialising and connecting, complete with a 1,876 sq ft external terrace boasting views over London.

Breakout space

# Schedule of areas

Floor	Demise	Sq ft	Sq m	Terrace sq ft	Terrace sq m
6	Office	5,378	500	1,972	183
	Clubroom	2,005	186	1,876	174
5		12,461	1,158		
4		12,458	1,157		
3		12,458	1,157		
2		12,459	1,157		
1		10,153	944		
GF	Office	4,645	432		
	Retail / Office	4,333	403		
	Reception	2,841	264		
<b>Total</b>		<b>70,012</b>	<b>7,358</b>	<b>3,848</b>	<b>357</b>



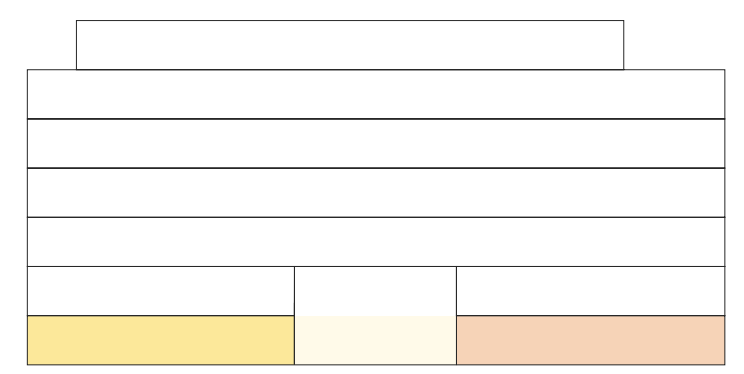
# Ground floor

## Floor plan



432 sq m / 4,645 sq ft

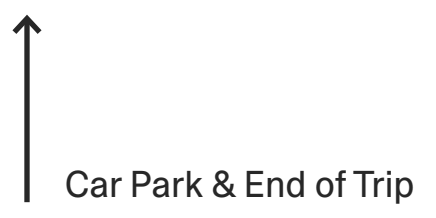
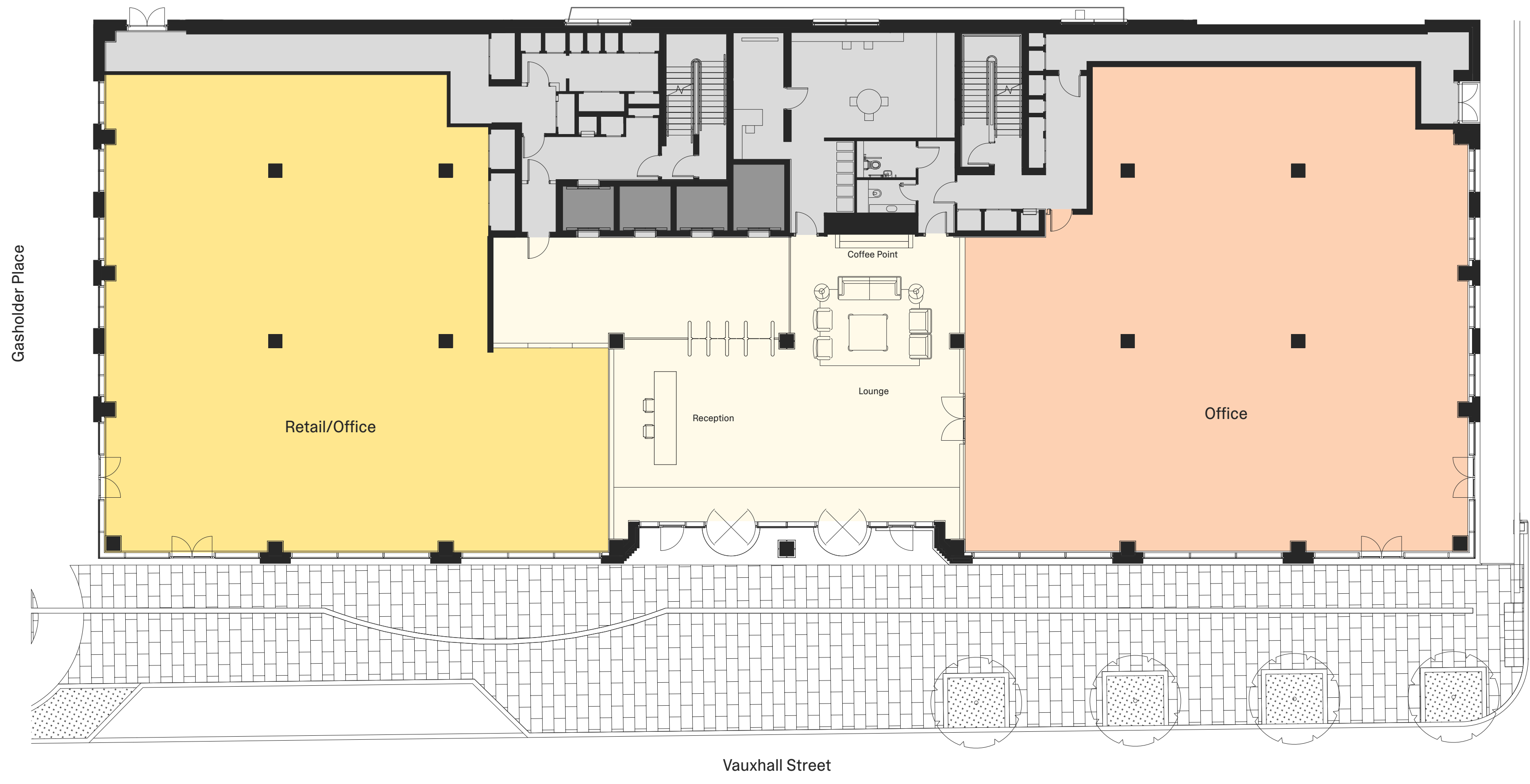
### Elevation guide



### Key

- Retail/Office
- Reception
- Office

GROUND FLOOR	Sq Ft	Sq M
Office	4,645	432
Retail/Office	4,333	403
Reception	2,841	264

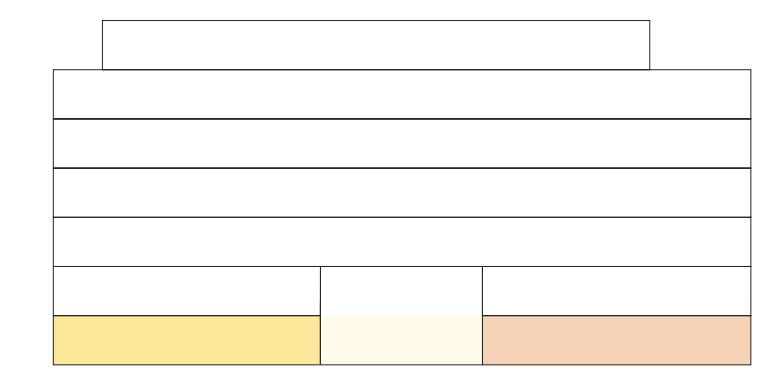


# Ground floor

## Space plan – client suite

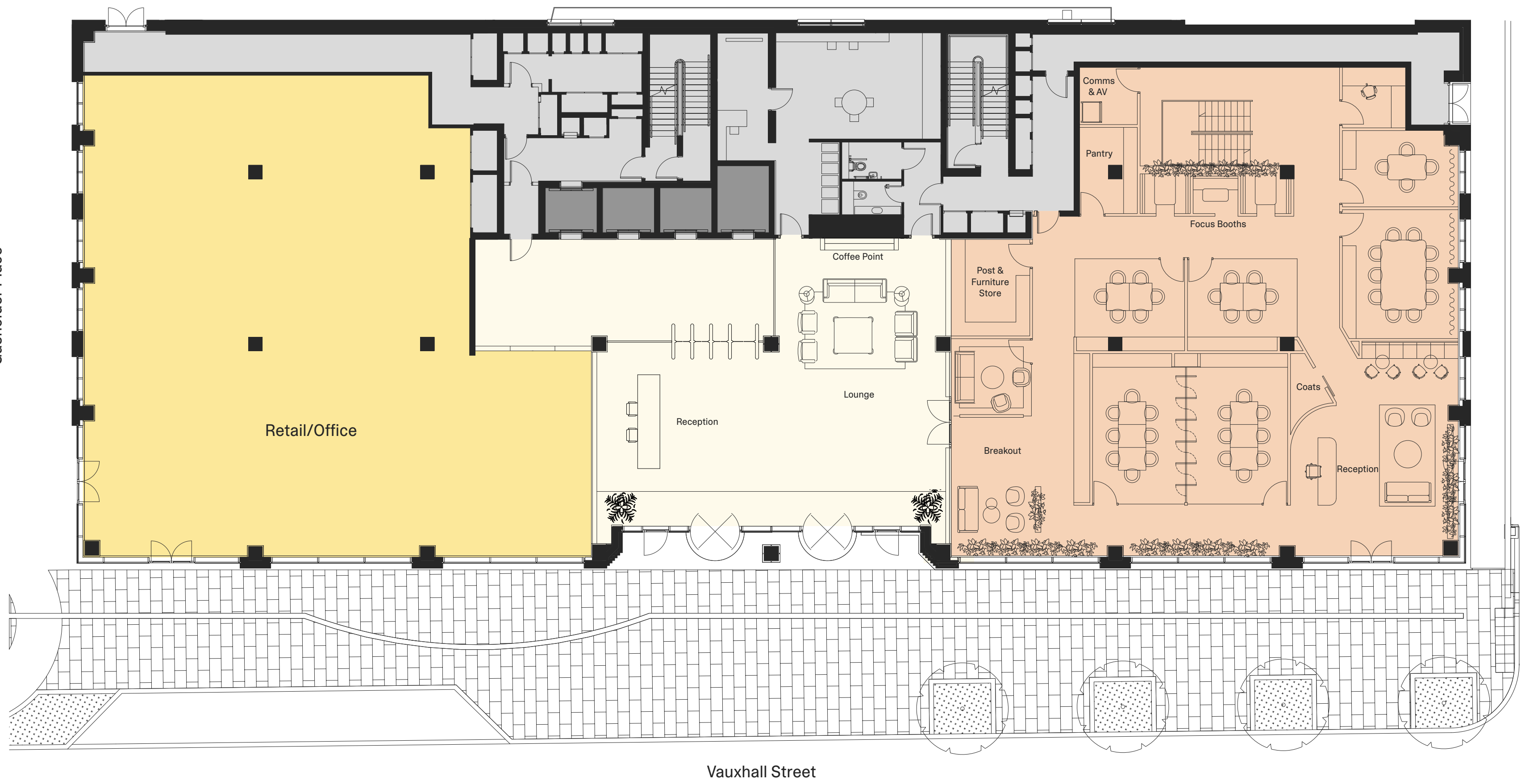
North  
432 sq m / 4,645 sq ft

### Elevation guide



### Key

Retail/Office
Reception
Office



GROUND FLOOR	Sq Ft	Sq M
Office	4,645	432
Retail/Office	4,333	403
Reception	2,841	264

WORKSTATIONS	
Workstations	36
Private booths	3
Single offices	2
Agile workstations	16

MEETING ROOMS	
3 seater meeting room	2
6 seater meeting room	1
10 seater meeting room	1

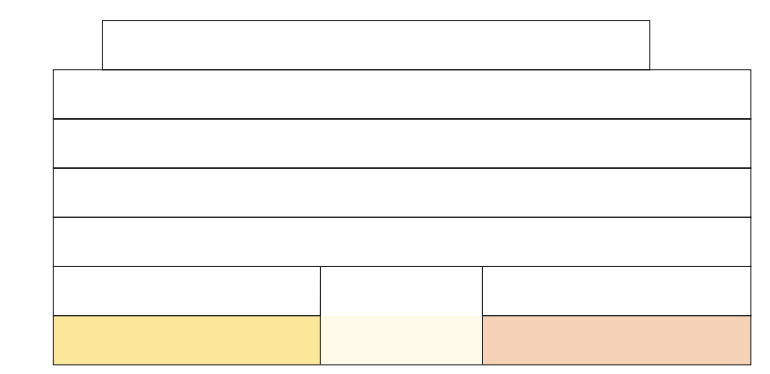
↑ Car Park & End of Trip

# Ground floor

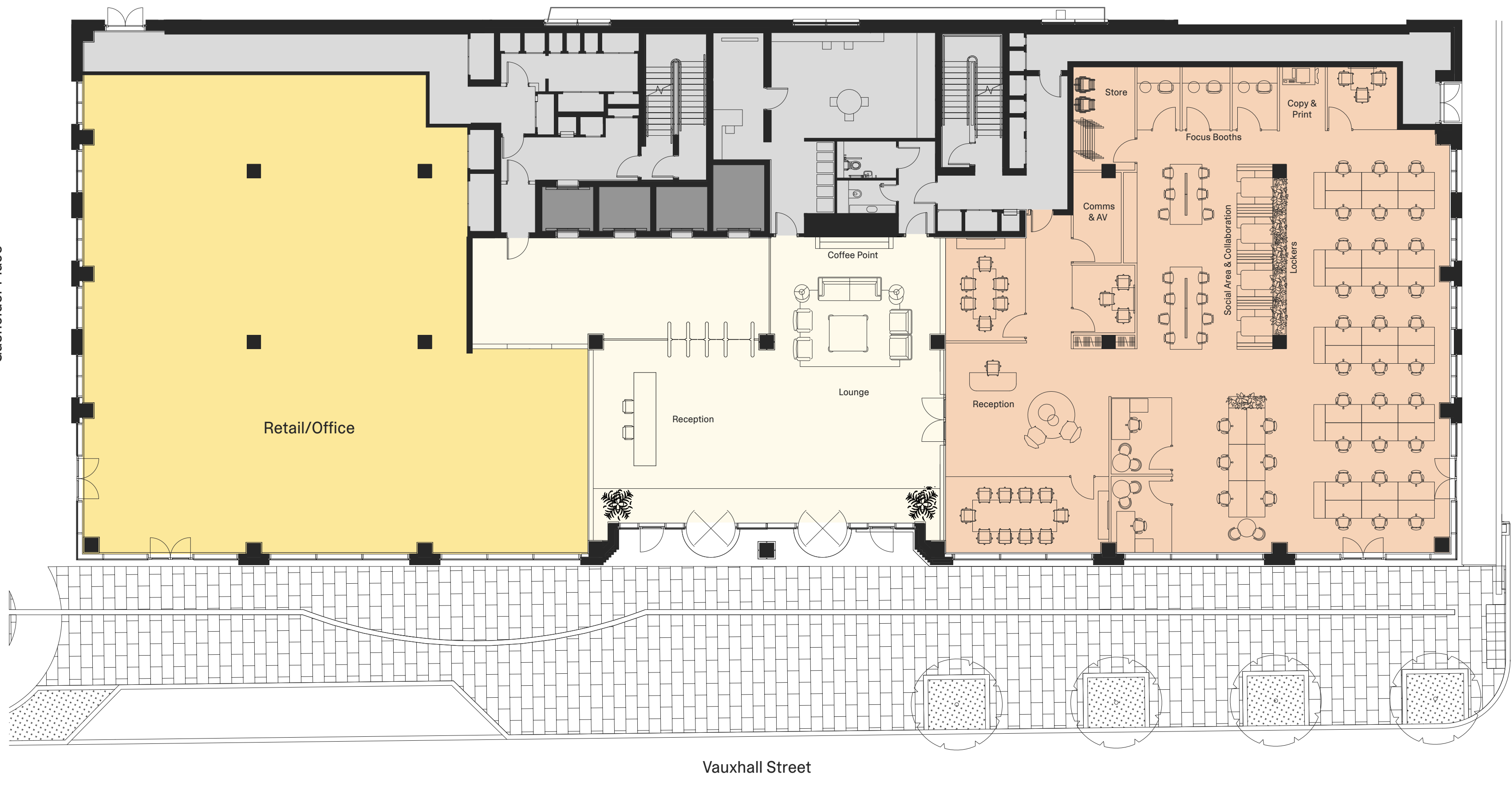
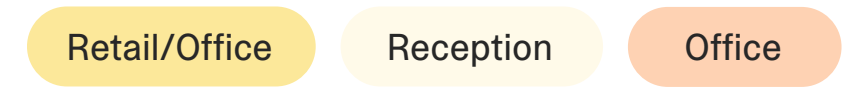
## Space plan – self contained occupier

North  
432 sq m / 4,645 sq ft

Elevation guide



Key



GROUND FLOOR	Sq Ft	Sq M
Office	4,645	432
Retail/Office	4,333	403
Reception	2,841	264

WORKSTATIONS	
Private booths	3

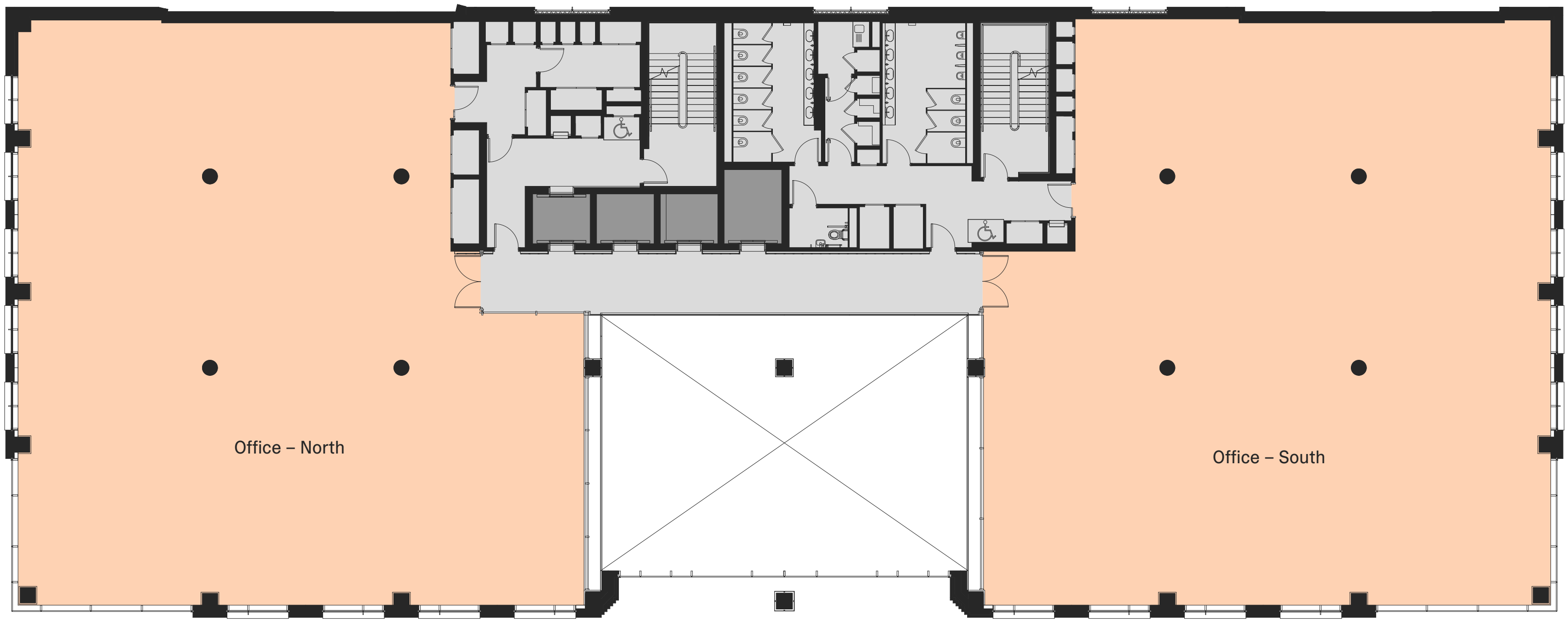
MEETING ROOMS	
10 seater meeting room	1
8 seater meeting room	2
5 seater meeting room	2
4 seater meeting room	2

↑ Car Park & End of Trip

# First floor

## Floor plan

Gasholder Place

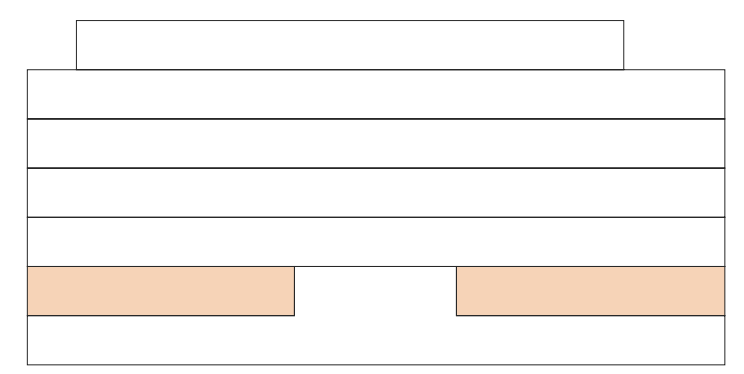


Vauxhall Street



944 sq m / 10,153 sq ft

### Elevation guide



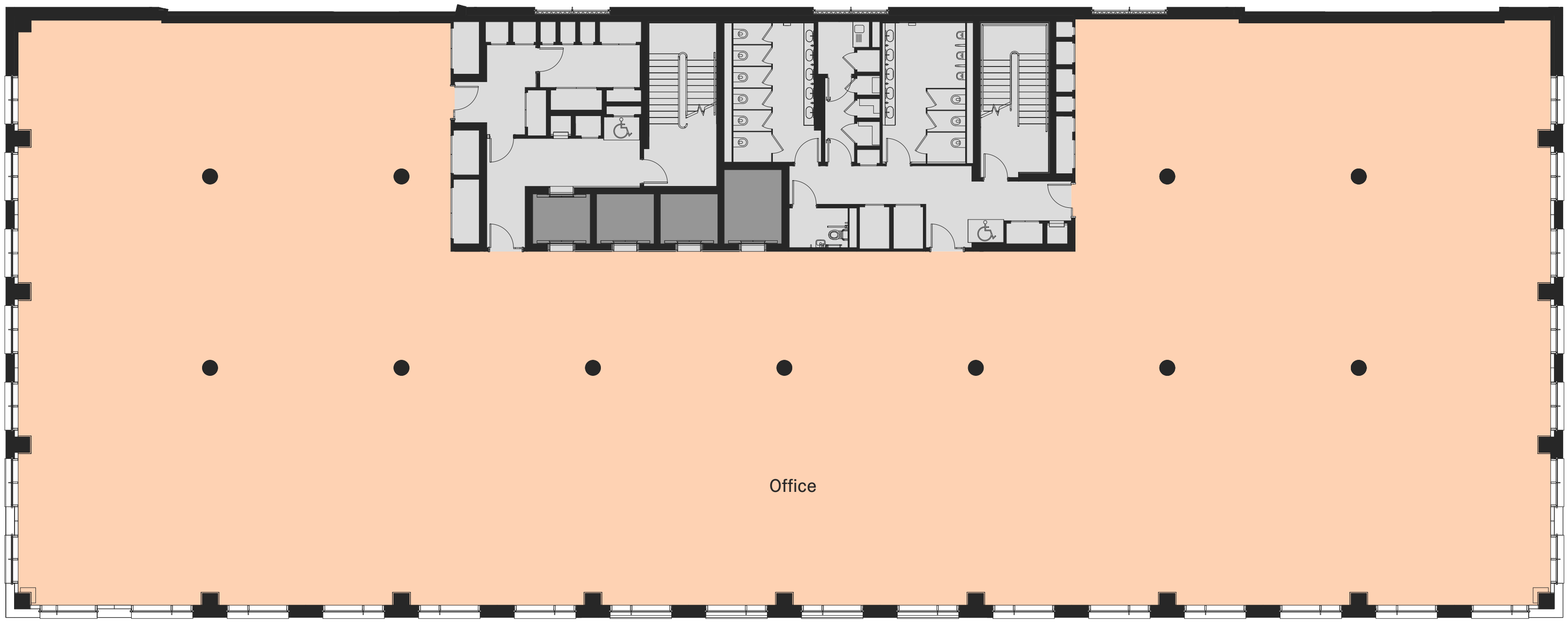
### Key

Office

FLOOR	Sq Ft	Sq M
North	4,926	458
South	5,227	486

# Typical floor

## Floor plan – levels 2 to 5



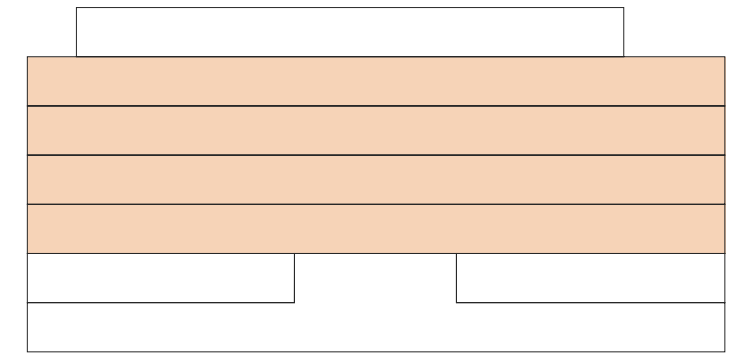
Gasholder Place

Vauxhall Street



1,157 sq m / 12,458 sq ft

Elevation guide



Key



FLOOR	Sq Ft	Sq M
5	12,461	1,158
4	12,458	1,157
3	12,458	1,157
2	12,459	1,157



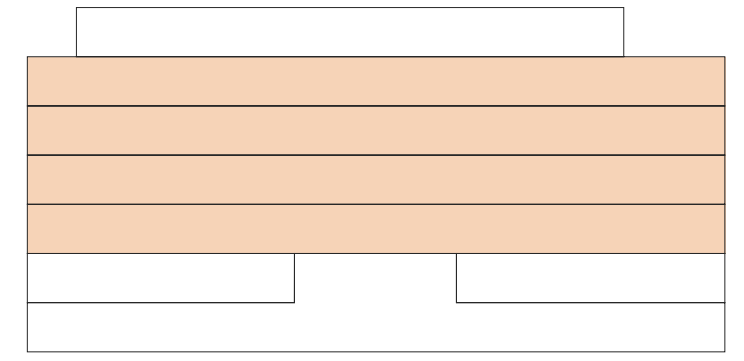
Blank Canvas floor

# Typical floor

## Space plan – modern corporate

North  
1,157 sq m / 12,458 sq ft

### Elevation guide



### Key

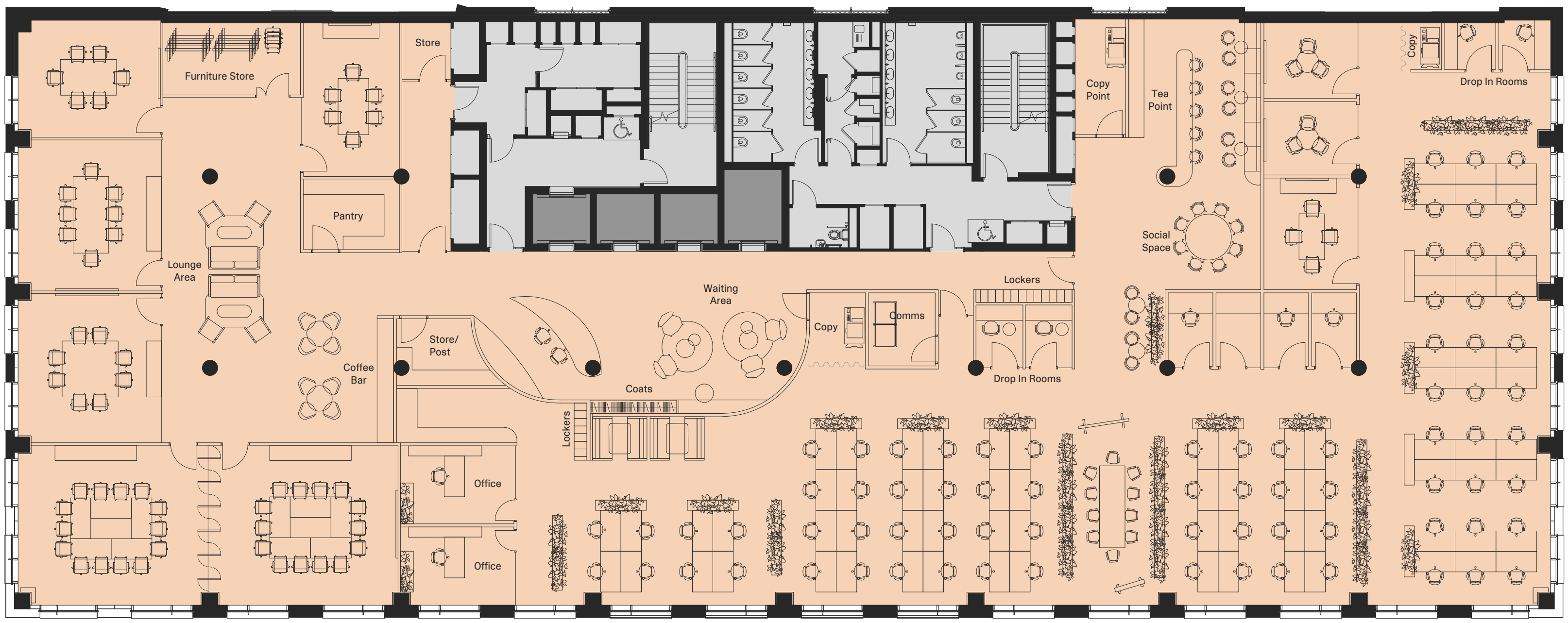
Office

FLOOR	Sq Ft	Sq M
5	12,461	1,158
4	12,458	1,157
3	12,458	1,157
2	12,459	1,157

WORKSTATIONS	
Workstations	78
Private workstations	8
Private offices	2

MEETING ROOMS	
14 seater meeting room	2
8 seater meeting room	2
6 seater meeting room	2
4 seater meeting room	1
3 seater meeting room	2

Gasholder Place



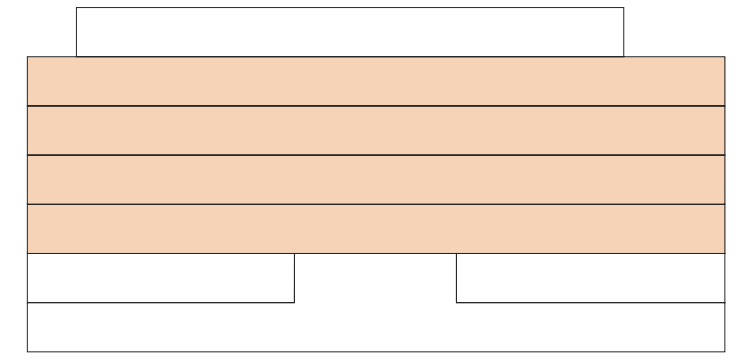
Vauxhall Street

# Typical floor

## Space plan – creative

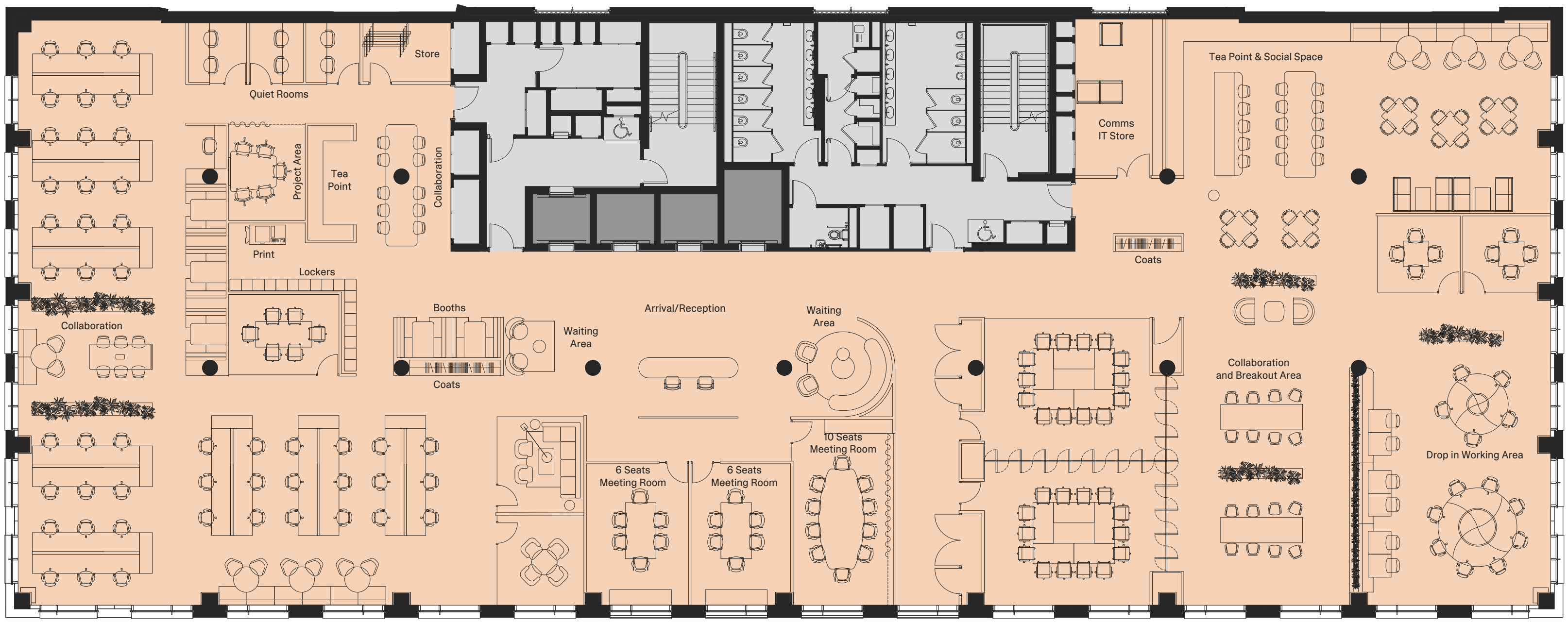
North  
1,157 sq m / 12,458 sq ft

### Elevation guide



### Key

Office



Gasholder Place

Vauxhall Street

FLOOR	Sq Ft	Sq M
5	12,461	1,158
4	12,458	1,157
3	12,458	1,157
2	12,459	1,157

WORKSTATIONS	
Workstations	48
Private workstations	4
Agile workstations	84

MEETING ROOMS	
14 seater meeting room	2
10 seater meeting room	1
6 seater meeting room	4
4 seater meeting room	3





Indicative creative fitout

# Sixth floor

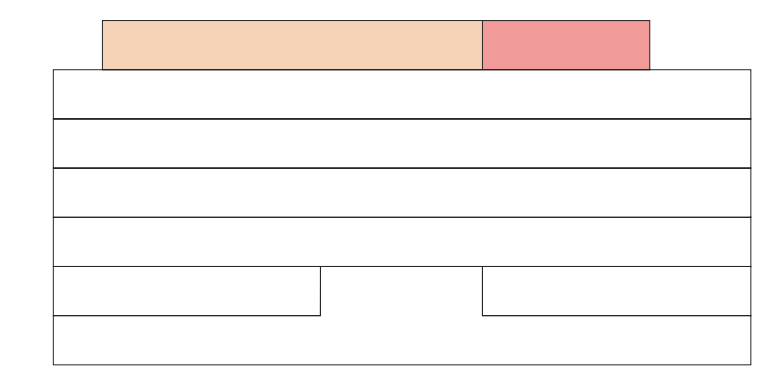
## Floor plan

Gasholder Place

Vauxhall Street

North  
500 sq m / 5,378 sq ft

### Elevation guide



### Key

- Office
- Clubroom

FLOOR 6	Sq Ft	Sq M
Office	5,378	500
Terrace	1,972	183
Clubroom	2,005	186
Clubroom Terrace	1,876	174

[View alternative clubroom layout](#)

# Sixth floor

## Space plan: office

Gasholder Place

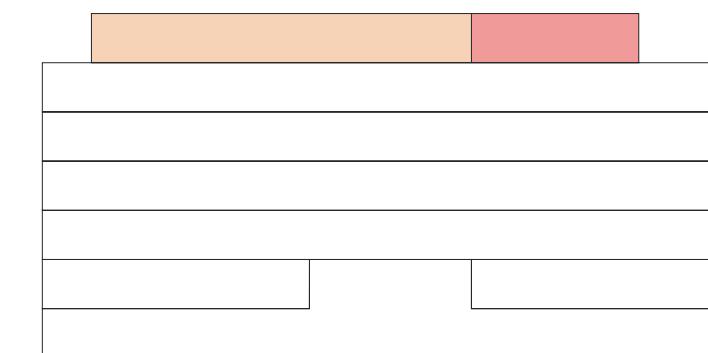


Vauxhall Street



500 sq m / 5,378 sq ft

### Elevation guide



### Key



FLOOR 6	Sq Ft	Sq M
Office	5,378	500
Terrace	1,972	183
Clubroom	2,005	186
Clubroom Terrace	1,876	174

MEETING ROOMS	
16 seater meeting room	1
14 seater meeting room	2
12 seater meeting room	1
8 seater meeting room	1
4 seater meeting room	1

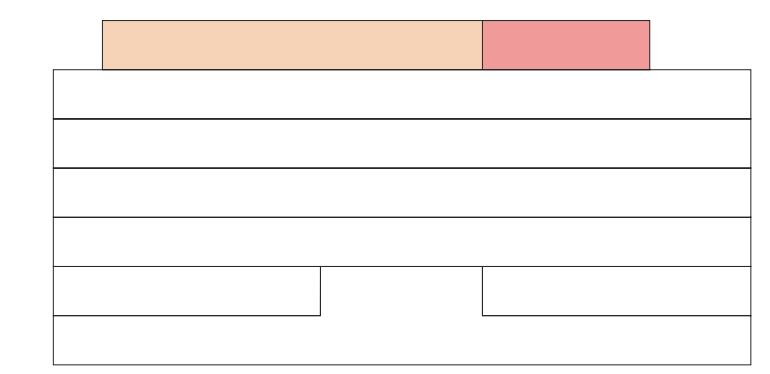
# Sixth floor

## Space plan: office – meeting room suite



500 sq m / 5,378 sq ft

### Elevation guide



### Key



FLOOR 6	Sq Ft	Sq M
Office	5,378	500
Terrace	1,972	183
Clubroom	2,005	186
Clubroom Terrace	1,876	174

MEETING ROOMS	
16 seater meeting room	1
14 seater meeting room	2
12 seater meeting room	1
8 seater meeting room	1
4 seater meeting room	1

Gasholder Place



Vauxhall Street

# Summary specifications



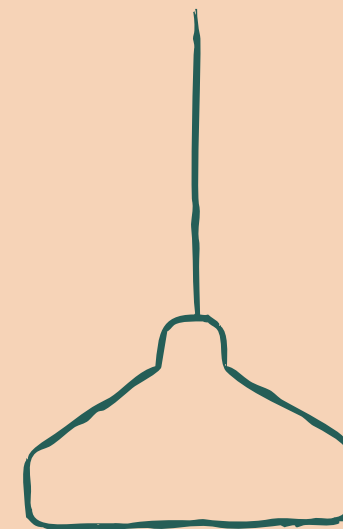
**2.7 m** floor to ceiling height

**Occupational density** designed at 1:8 sq m

**4 Lifts** -  
1 goods lift,  
3 passenger lifts



Flexible floorplates of **12,400 sq ft**



**Exposed** ceiling design

**100% Electric** based air conditioned VRF system; delivering simultaneous heating and cooling.



**Landsec Experience building app** providing digital building access, local information, offers, rewards, live travel and more.



The terrace

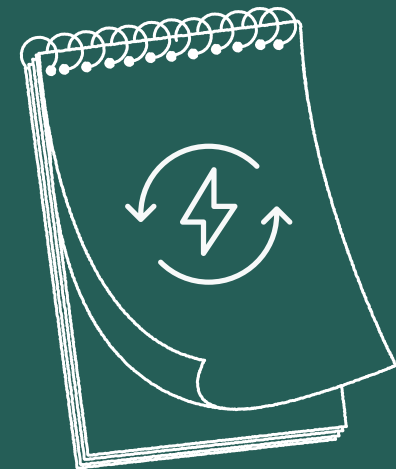
# A building with a green heart

We're creating a low-carbon space, encouraging eco-friendly travel, and choosing ethical materials. Plus, we're boosting local nature and economy. It's our big move towards building a greener future.

**BREEAM<sup>®</sup>**  
EXCELLENT



**Fresh air rates 18 l/s /sq ft**  
Enhancing health and improving performance



**100% renewable**  
electricity in  
operations

**Heat pump solution**  
reducing energy cost  
and footprint

**150** new trees planted at  
Oval Village



**2.5 acres of**  
**green space** in  
an urban setting



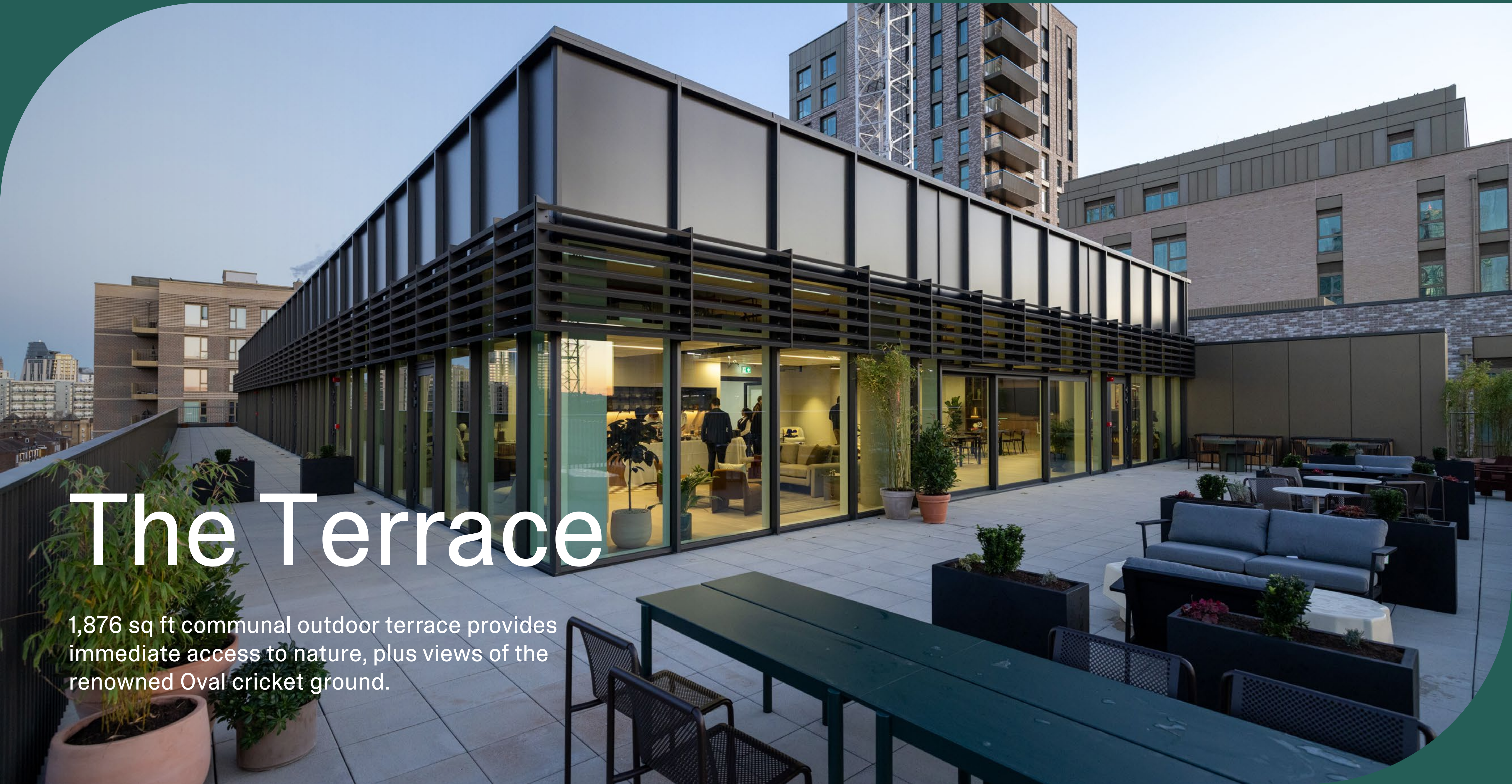
**Over 200 varieties**  
**of plant species**  
enhancing bio-diversity  
throughout the village

**Premium** end of trip  
facilities  
**10** showers,  
**56** lockers and  
**94** cycle spaces



# The Terrace

1,876 sq ft communal outdoor terrace provides immediate access to nature, plus views of the renowned Oval cricket ground.



# Delivered by Landsec

Strategic partnerships. Positive places. Curated experiences.

At Landsec, we make work personal. This is a partnership; working together to make sure your workplace works for your people and your business. Listening and collaborating, building a lasting relationship. Understanding your unique needs at every stage of your journey.

**Exceptional spaces, experiences and service**

**Open communication and collaboration**

**Planning together to future-proof your business**

**WORKPLACE**  
by Landsec



# Contact



Cathy Griffiths  
 T: 07702 676 554  
 E: [cathy.griffiths@landsec.com](mailto:cathy.griffiths@landsec.com)



Stuart Austin  
 T: 07912 299 725  
 E: [stuart.austin@jll.com](mailto:stuart.austin@jll.com)

EDWARD CHARLES  
 & PARTNERS W 1  
 CHARTERED SURVEYORS

Jamie Shuttle  
 T: 07788 414 332  
 E: [jshuttle@edwardcharles.co.uk](mailto:jshuttle@edwardcharles.co.uk)

Alice Logan  
 T: 07720 070 417  
 E: [alice.logan@jll.com](mailto:alice.logan@jll.com)

Craig Norton  
 T: 07818 424 764  
 E: [cnorton@edwardcharles.co.uk](mailto:cnorton@edwardcharles.co.uk)

Josh Doble  
 T: 07783 771 576  
 E: [joshua.doble@jll.com](mailto:joshua.doble@jll.com)

Amy Skidmore  
 T: 07734 924 146  
 E: [askidmore@edwardcharles.co.uk](mailto:askidmore@edwardcharles.co.uk)

Misrepresentation Act 1967: Edward Charles & Partners and JLL for themselves and for the vendor(s) or lessor(s) of this property whose agents they are, give notice that: 1. These particulars do not constitute, nor constitute any part of, an offer or contract. 2. None of the statements contained in these particulars as to the property are to be relied on as statements or representations of fact. 3. Any intending purchaser or lessee must satisfy himself by inspection or otherwise as to the correctness of each of the statements contained in these particulars. 4. The vendor(s) or lessor(s) do not make or give Edward Charles & Partners, JLL, nor any person in their employment any authority to make or give, any representation or warranty whatever in relation to this property. Finance Act 1989: Unless otherwise stated all prices and rents are quoted exclusive of VAT. Property Misdescriptions Act 1991: These details are believed to be correct at the time of compilation but may be subject to subsequent amendment. February 2026.