

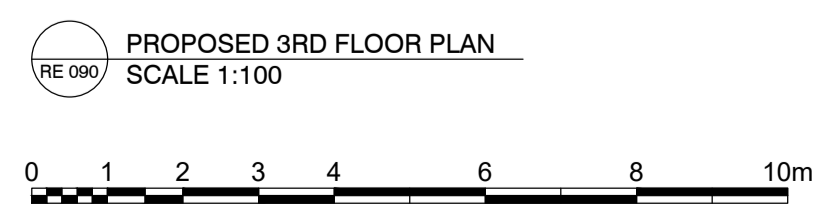


- Notes
- OFFICE 1 - 4335sqf
  - OFFICE 2 - 4583sqf
  - OFFICE 3 - 2234sqf  
CAT B

01  
02  
02  
03  
04  
05  
02  
01  
05  
06

07  
08  
04  
09

1. EXISTING RISER
2. NEW CUPBOARD
3. NEW MEETING ROOM
4. SOFT SEATING / OCCASIONAL MEETING
5. HOT DESKING / PLUG AND PLAY
6. NEW KITCHEN
7. NEW DESKS
8. NEW OFFICE PLATE LOBBY
9. NEW COMMS ROOM



03/08/2020 - REV B	DM	CG
DEMISE AREAS SHOWN	DM	CG
24/06/2020	DM	CG
ISSUED FOR INFORMATION	DM	CG
14/11/2019	DM	CG
ISSUED FOR INFORMATION	DM	CG
Revisions	By	Authorised

de novo - architecture limited  
1 Castle Yard Richmond London TW10 6TF  
tel: +44 (0) 20 8332 3900 fax: +44 (0) 20 8332 3901  
www.mydna.com

Client  
**HERMES INVESTMENT MANAGEMENT**

Project  
**HYTHE HOUSE**

Title  
**Proposed 3rd Floor Concept Layout  
Tenant Demise**

Scale	Drawn	Checked	Authorised
1:100 @ A1	DM	CG	SMC
Date	Issuing Discipline		
14/11/2019	ARCHITECTURE		
Issue status			

**FOR INFORMATION**

Drawing number	Rev
1325 / RE / 090	B

Important note  
Where dimensions are not given, drawings must not be scaled and the matter referred to dna-limited.

In the event of any detail or dimensional conflict between dna-limited drawings, the matter must be referred to dna-limited for clarification.

The contractor must also refer to the dna-limited scope of works document, clause 1600 of SOW Specification A100

© Copyright 2010 - de novo - architecture limited