





Contemporary office space without compromise



Eleven Brindleyplace has been designed to meet the needs of occupiers looking for efficient office accommodation that doesn't compromise on quality. The flexible 8,832 sq ft floorplates can accommodate a variety of configurations that allow businesses to create environments that perfectly suit their needs.

Situated adjacent to the building's impressive entrance there is a business lounge which offers a stylish environment in which to meet visitors, hold an informal business meeting, or take ten minutes to relax with a coffee. For a professional and personal level of service, look no further than Eleven Brindleyplace. Our relaxed and inspiring space is guaranteed to make you, your colleagues and visitors feel at home.

Contemporary style with premium finishes

The floorplates across Eleven Brindleyplace's 12 floors are exceedingly versatile, with occupiers able to choose from a variety of configurations to best suit their needs.

Floor to ceiling glazing on all floors provides occupiers with excellent natural light and superb views which ensures that all employees benefit from a bright and inspiring office environment.

SPECIFICATION



Award winning flexible space

In 2010 Eleven Brindleyplace was recognised by the British Council for Offices (BCO), as the UK's Best Commercial Workplace and claimed the prestigious Best of the Best National Commercial Workplace.





Eleven Brindleyplace provides flexible floorplates offering a variety of configurations to meet your exact requirements together with the following specification:



24 hour, 7 day a week access



Flexible efficient floorplates with full height glazing, offering unrivalled views of the city



A PC based Building Management System providing the optimum internal environment incorporating fan coil units for cooling



Air Quality sensors which increases airflow when required



Fully accessible raised floors throughout



Four high speed passenger lifts including one goods lift



Double height concierge reception and business lounge



Male, female and accessible wc's on all floors



Shower facilities



Lockers and bicycle storage



Comprehensive integrated security system complete with CCTV and speed lanes

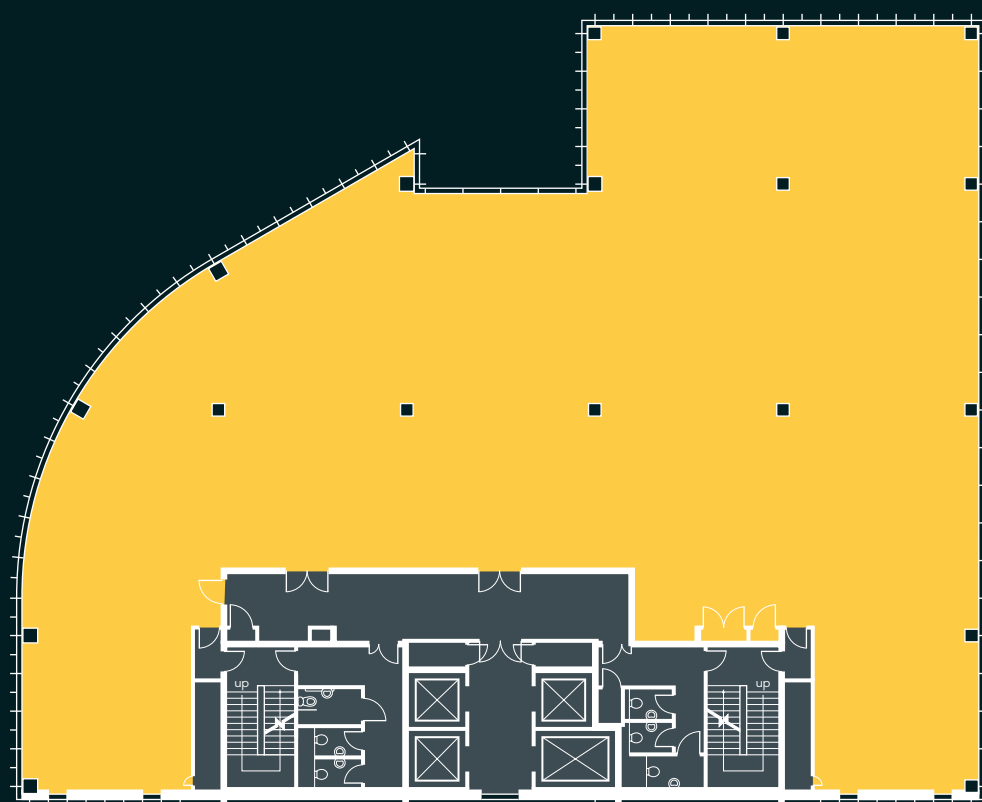


Secure basement car parking available

Grade A office suites

Typical Floorplate

8,832 sq ft (821 sq m)



ACCOMMODATION

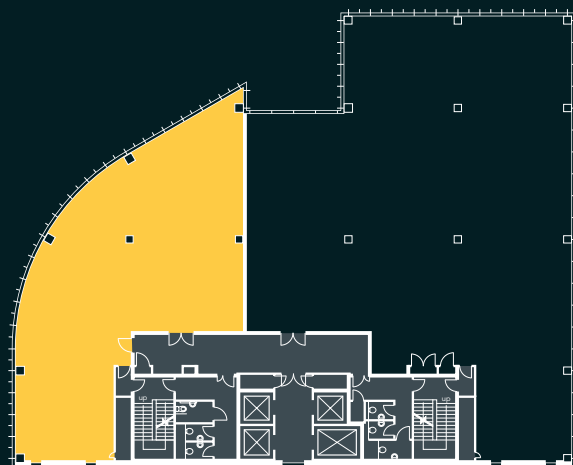
- Office
- Core

For indicative purposes only. Not to scale.

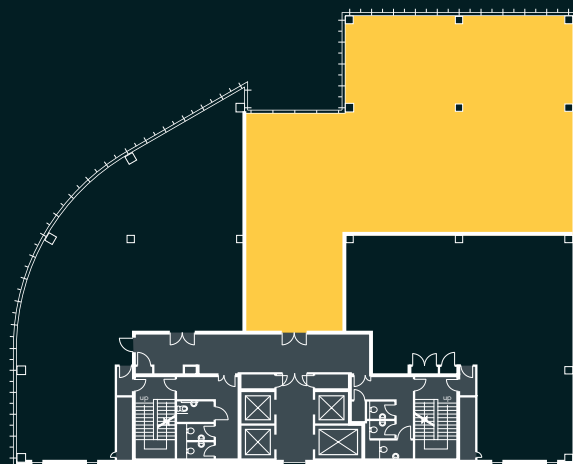
Suite Flexibility

Split Options

Option A
3,149 sq ft (293 sq m)



Option B
3,724 sq ft (346 sq m)



Option C
1,959 sq ft (182 sq m)



The perfect work and life balance

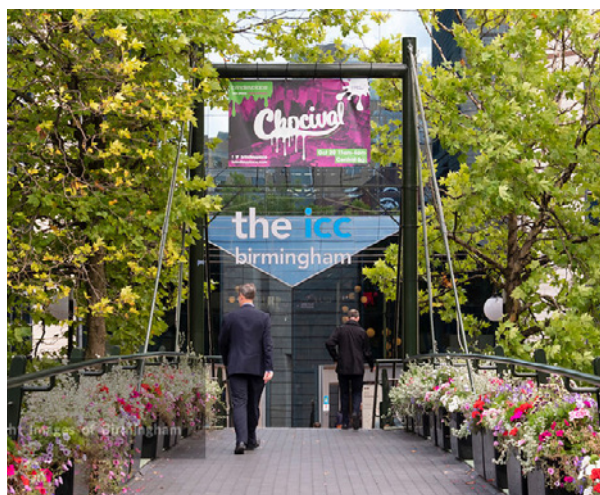
Having its own Metro terminal, Brindleyplace has excellent connectivity to the city centre. The Metro gives swift access to the city centre and both New Street and Snow Hill rail stations.

Brindleyplace comprises a number of mixed use buildings built around three attractive public squares – Brunswick, Central and Oozells. Over 10,000 people work in Brindleyplace for some of the UK's leading businesses and it is a thriving and vibrant location both throughout the daytime and evening.

Brindleyplace comprises the largest concentration of Grade A office space in the city and is well serviced by a wealth of amenities. Alongside this the estate includes The Water's Edge, one of Birmingham's premier leisure pitches, The Crescent Theatre, Utilita Arena, International Convention Centre, Symphony Hall, Ikon Gallery, and Bannatyne's gym.



UTILITA ARENA
BIRMINGHAM



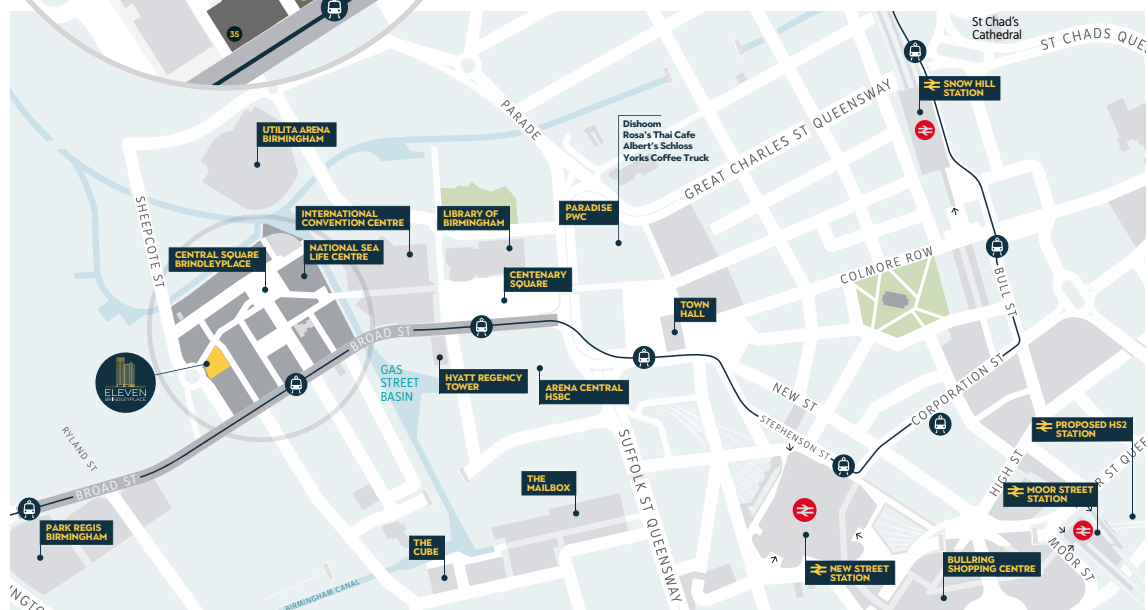


A vibrant and social location

Our canalside destination is truly at the heart of Birmingham, with something to match every occasion. You'll enjoy the best of work and play in the heart of the city and be part of Birmingham's premier business and leisure destination.

Located within the award-winning mixed use Brindleyplace estate, Eleven Brindleyplace offers access to an unrivalled array of restaurants, bars and cafés to suit every taste and budget, and is also supported by an eclectic blend of shops, galleries, attractions and even a 35,000 sq ft health club with pool. There is also an on site, pay-on-foot car park managed by Q-Park, which is open 365 days a year.

LOCATION



Restaurants

- 01 Bank
- 02 Perios
- 03 Cielo
- 04 Gourmet Burger Kitchen
- 05 Las Iguanas
- 06 Lulu Wild
- 07 Piccolino
- 08 Pizza Express
- 09 Pulperia
- 10 Qavali
- 11 Recess
- 12 Siamais
- 13 Wagamama
- 14 Zizzi

Leisure

- 15 Bannatyne Health Club
- 16 Crescent Theatre
- 17 Ikon Gallery
- 18 The National SEA LIFE Centre

Cafés & Bars

- 19 All Bar One
- 20 Be At One
- 21 Caffè Nero
- 22 Costa Coffee
- 23 Cosy Club
- 24 Nuvo + OKO
- 25 Pitcher & Piano
- 26 Pret A Manger
- 27 Slug & Lettuce
- 28 The Alchemist
- 29 Yorks at Ikon

Retail

- 30 Baguette du Monde
- 31 Boots
- 32 Ethos
- 33 Ikon Shop
- 34 Places Birmingham
- 35 Sainsbury's Local
- 36 SPAR / Subway
- 37 The Gentleman Barbers

Hotels

- 38 Hilton Garden Inn



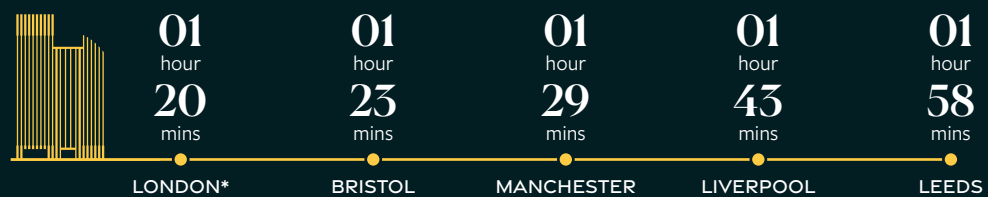
Brindleyplace is home to some of the best eateries in Birmingham and packed with exciting attractions; from the Utilita Arena, Symphony Hall, Ikon Gallery, to Bank restaurant, Piccolini's and Pulperia fine dining.



Unrivalled connections on your door step

Rail

Birmingham is a fantastically well-connected city, well served by three major railway stations: Birmingham New Street, Birmingham Snow Hill and Birmingham Moor Street. The city's principal transport hub, Birmingham New Street station provides direct services to destinations across the UK.

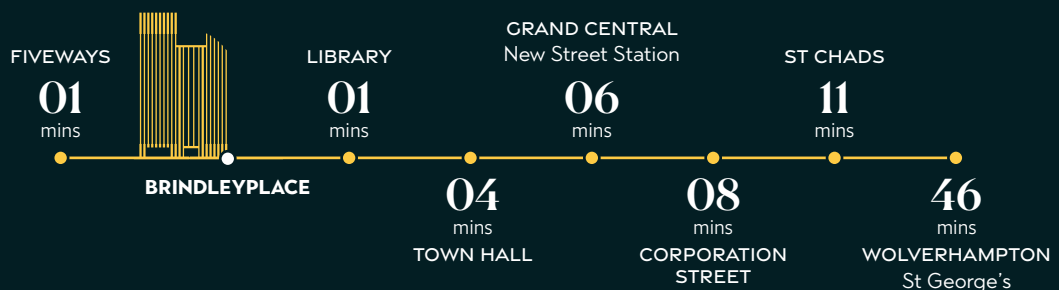


Journey times from New Street Station. *Reducing to approximately 50 minutes post completion of HS2.

Metro

The Midland Metro currently links Wolverhampton to Birmingham city centre and provides excellent connectivity for both business and leisure, with great access to the likes of Grand Central and Bullring.

The Metro line provides direct access from Brindleyplace to New Street station in 6 minutes, with services running every 8 minutes during the working week. The line has been recently extended to offer connections between Brindleyplace and Edgbaston.



Journey times from new Brindleyplace terminal.

Road

Eleven Brindleyplace is perfectly located and easily accessible, with Birmingham at the centre of the national motorway network. Motorways M5, M6 and M42 form a route around the city, principally accessed via the Aston Expressway A38(M). There is also easy access to the M1, M40 and M54 motorways.

London	2 Hrs 9 mins
Manchester	1 Hr 40 mins
Leeds	2 Hrs 3 mins
Bristol	1 Hr 35 mins
Birmingham Airport	15 mins



Contact



Hannah Voogd

+44 (0) 7562 205 778

hannah.voogd@eu.jll.com

Andy Riach

+44 (0) 7872 4624 27

andrew.riach@eu.jll.com



Charles Warrack

+44 (0) 7977 512 965

charles.warrack@fishergerman.co.uk

Mike Price

+44 (0) 7909 596 051

mike.price@fishergerman.co.uk

ELEVENBRINDLEYPLACE.CO.UK

JLL and Fisher German conditions under which particulars are issued: Messrs. JLL, Fisher German and for the vendors or lessors of this property whose agents they are give notice that (i) the particulars are set out as a general outline only for the guidance of intending purchasers or lessees and do not constitute, nor constitute part of an offer or contract. (ii) all descriptions, dimensions, references to condition and necessary permission for use and occupation, and other details are given in good faith and are believed to be correct but any intending purchasers or tenants should not rely on them as statements or representation of fact but satisfy themselves by inspection or otherwise as to the correctness of each of them. (iii) no person in the employment of Messrs. JLL, Fisher German or any joint agents has any authority to make or give any representation or warranty whatever in relation to this property. (iv) all rentals and prices are quoted exclusive of VAT. (v) All images within this brochure are for illustration purposes only, 2022.

Designed and produced by: **Barques** t 0121 233 2080 w barques.co.uk