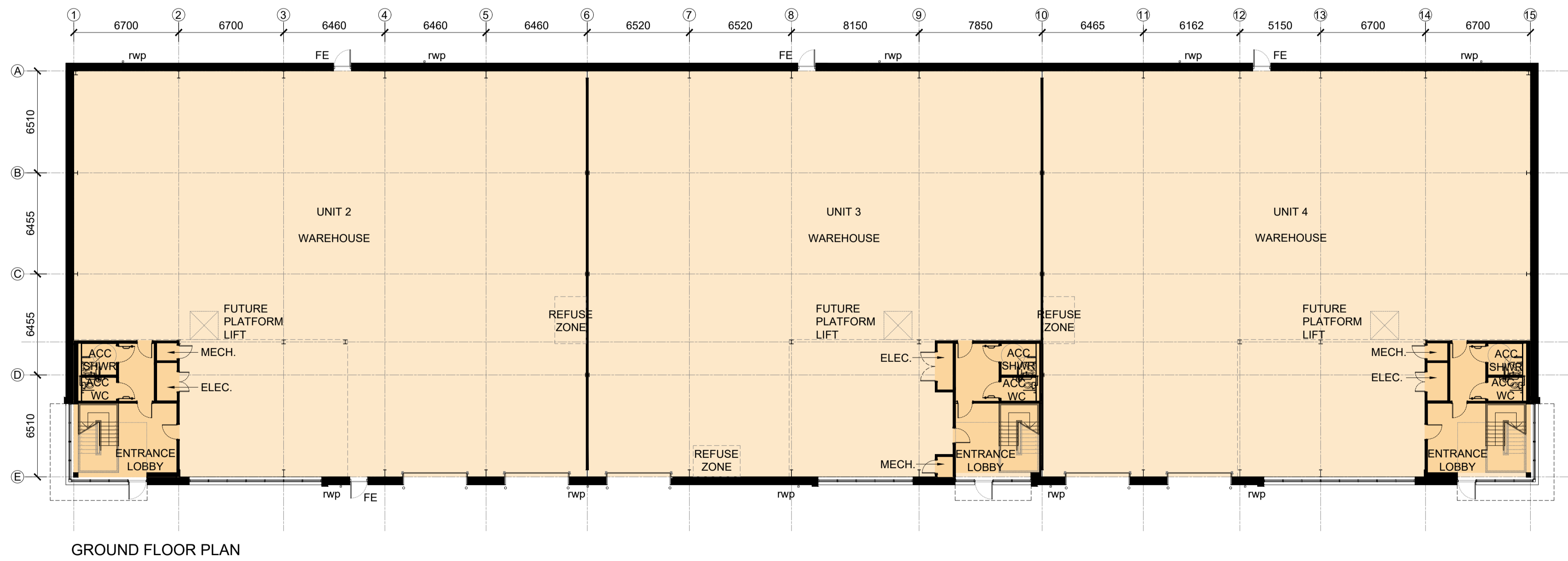
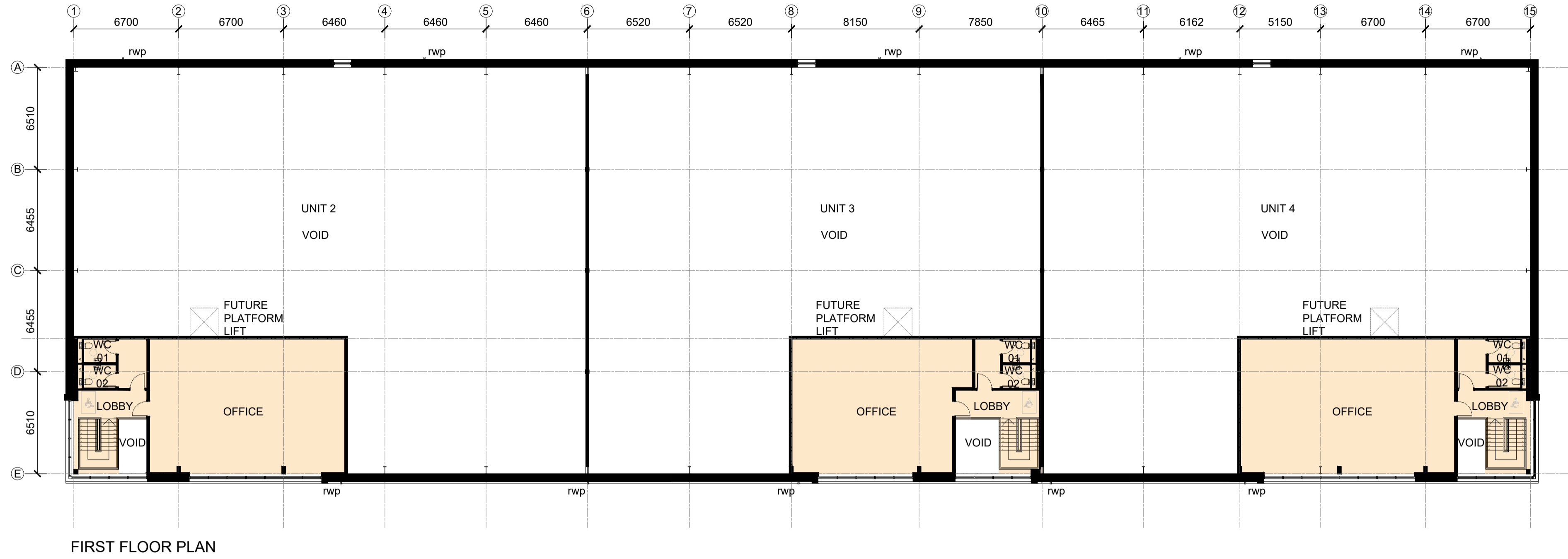


Revisions:	Drawn/Chkd:	Date:
A. Plan generally revised and updated.	AMc	June 21
B. Refuse zones added.	AMc	July 21
C. Plans generally revised and updated following planners comments.	RM	Sep 21

UNIT 2	
GEA	
GF	9,652ft ² / 896 m ²
FF	1,736ft ² / 162 m ²
Total	11,388ft² / 1,058 m²

UNIT 3	
GEA	
GF	8,406ft ² / 781 m ²
FF	1,529ft ² / 142 m ²
Total	9,935ft² / 923 m²

UNIT 4	
GEA	
GF	9,182ft ² / 853m ²
FF	1,862ft ² / 173m ²
Total	11,044ft² / 1,026m²



Client:
XLB PROPERTY & PATRON HOOK LTD



Project:
BARTLEY WOOD BUSINESS PARK, HOOK

12 Warren Yard,
 Warren Park,
 Milton Keynes,
 MK12 5HW
 01908 305 246

info@prc-group.com
 www.prc-group.com

Drawing Title:
**UNIT 2-4
 PROPOSED FLOOR PLANS**

Scale @ A1: 1:200
 Checked by: ME
 Date: MAY 21

Job No: 11248
 Stage: PL 111
 Drawing No: 111
 Rev: C

Issue Status:
 Construction Preliminary
 Information Approval
 Tender

Architecture
 Planning
 Master Planning
 Urban Design
 Interiors
 Landscape
Offices
 Woking
 London
 Milton Keynes
 Warsaw

