

This drawing must not be reproduced
 without the written consent of the
 architect. Any reproduction without the
 architect's consent is prohibited. The
 architect shall not be liable for any
 errors or omissions in this drawing.
 Report alterations to the architect.



No. 29-40
 VALE COURT

1 SITE BLOCK PLAN

Scale: 1:200 @A1

00 - Issued for Planning
 rev. amendments date by

01 - Update parking and road layout
 02 - Update parking and road layout

03 - Actual number of spaces
 parking

04 - Update parking and road layout

05 - Update parking and road layout

06 - Update parking and road layout

07 - Update parking and road layout

08 - Update parking and road layout

09 - Update parking and road layout

10 - Update parking and road layout

11 - Update parking and road layout

12 - Update parking and road layout

13 - Update parking and road layout

14 - Update parking and road layout

15 - Update parking and road layout

16 - Update parking and road layout

17 - Update parking and road layout

18 - Update parking and road layout

19 - Update parking and road layout

20 - Update parking and road layout

architects
ipa
 55 Kingstown Street
 London NW1 8JF
 T +44 (0) 20 7436 1133
 W ipa-architects.com

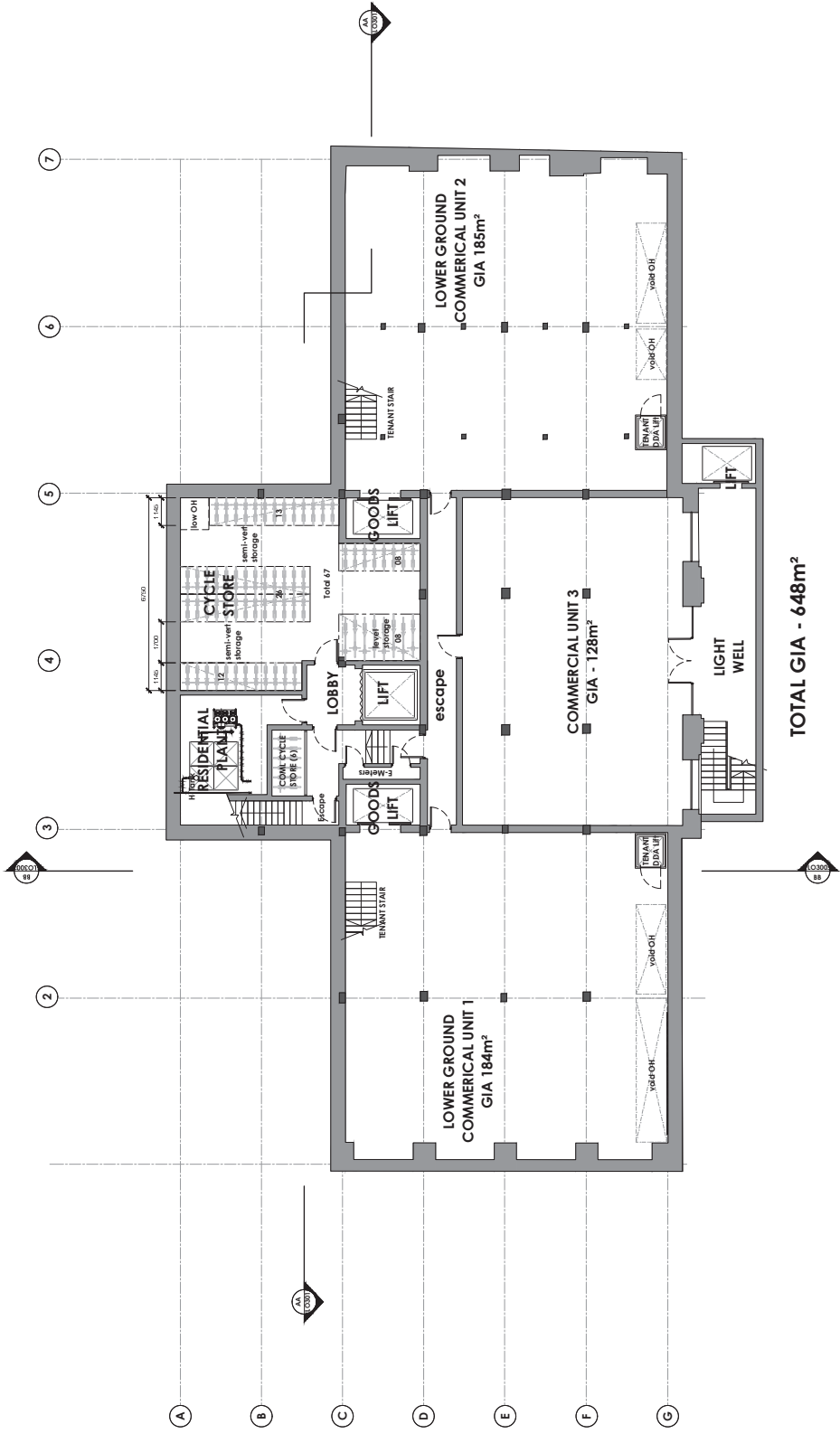
Project:
 18 THE VALE
 ACTON
 W3 7SB

Drawing Title:
 PROPOSED
 SITE BLOCK PLAN

Drawing Title:
 PLANNING

Date	10/04/2015	Drawn by	RWW
Scale	1:1200	Check by	WJ
Project No.	1459 LO 003	Rev.	02
Client	18EAL018 (Rev'd Plan).dwg		
© IPA Architects. All rights reserved.			

This drawing must not be reproduced
 or used in any way without the
 written consent of the architect.
 Any alterations must be made in
 accordance with the architect's
 instructions.



TOTAL GIA - 648m²



- 06. 10.11.2015
*Revises Basements GIA
- 07. 08.11.2015
*Revises basement services to accommodate cycle changes re. additional ground floor lifts
- 08. 24.08.2015
*Add tenant GDS lift
- 09. 10.05.2015
*Revises light well lifts etc & member
- 10. 08.2015
*Revises layout in void for storage bicycle storage area
- 11. 10.01.2015
*Revises bicycle rack numbers
- 12. 15.10.2015 ERS/W
- 13. 28.07.2015 ERS/W
*Issuing for planning

architects
ipa
 55 Kingstown Street
 London NW1 8JF
 T +44 (0) 20 7436 1133
 W ipa-architects.com

Project
 16 THE VALE
 ACTON
 W3 7SB

Drawing file
**PROPOSED
 BASEMENT FLOOR PLAN**

Drawing status

PLANNING	
Date	10/04/2015
Scale	R/W
Grid	A3 @ 1:200
Sheet	15E9.LO-100
Drawn by	08
Checked by	15E9.LO.100 (Basement Plan) JAW
Approved by	15E9.LO.100 (Basement Plan) JAW

© IPA Architects. All rights reserved.

1 BASEMENT FLOOR PLAN
 Scale: 1:100 @A1

