

Metropolitan Wharf, Wapping, London, E1W 3SS

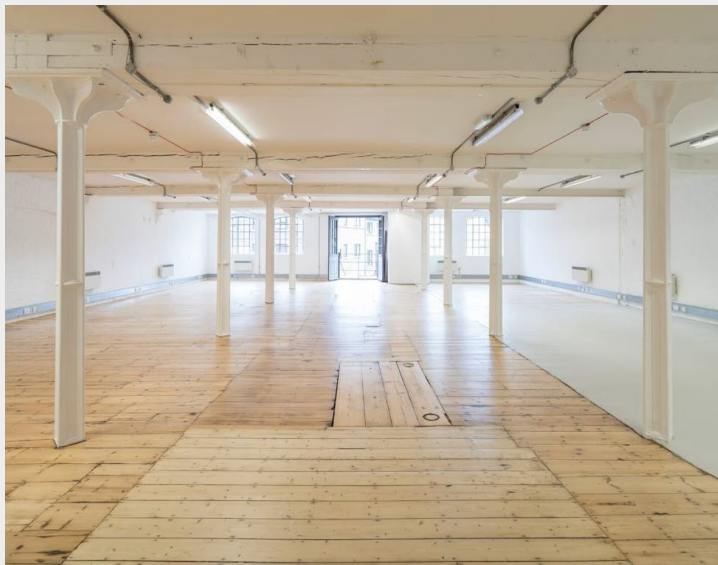
TO LET

Office

1,390 to 10,633 sq ft / 129.1 to 987.8
sq m

£28 - £33 per sq ft

Exceptional commercial units within a converted Victorian riverside warehouse



- Grade II Listed Victorian riverside warehouse
- Fully fitted or open plan office space available
- Grand entrance lobby with communal terrace area overlooking the River Thames
- 24/7 access and security
- High-speed fibre connectivity
- Shower facilities
- Passenger lifts
- Also available as fully managed leases



Description

A range of open plan units benefiting from high speed fibre connectivity, exposed brickwork, cast iron columns and superb natural daylight through warehouse style windows inspired by the original design. The property also boasts a characterful communal space on the ground floor where tenants can enjoy refreshments on the communal terrace overlooking the River Thames.

Location

Metropolitan Wharf is a Grade II-listed Victorian riverside warehouse and one of London's most impressive wharf buildings. Situated on the northern banks of the River Thames, the building is nestled between the cobbles of Wapping Wall and the water. Wapping Station (Windrush Line) is a 3-minute walk away. Travel times on the Windrush Line are approximately 3–5 minutes to Whitechapel and 6–7 minutes to Shoreditch via Shoreditch High Street.



Accommodation / Availability

Unit	Sq ft	Sq m	Rent (sq ft)	Rates Payable (sq ft)	Service Charge (sq ft)	Total month	Availability
Unit - 102	1,838	170.76	£28	£9	£8	£6,892.50	Available
Unit - 201	1,390	129.14	£28	£9	£8	£5,212.50	Available
Unit - 206	2,766	256.97	£33	£9	£8	£11,525	Available
Unit - 303	2,454	227.98	£28	£9	£8	£9,202.50	Available
Unit - 509	2,185	202.99	£33	£9	£8	£9,104.17	Available

Tenure

New Lease

EPC

C

VAT

Applicable

Configuration

Fitted

Contacts

Joel Barnes
07974 625 109
joel.barnes@strettons.co.uk

Tom Schwier
07583 037 559
tom.schwier@strettons.co.uk

Alfie Ziff
07803 850 224
alfie.ziff@strettons.co.uk

Joshua Levi (Workplace Co.)
0203 904 7724
jl@theworkplacecompany.co.uk



Strettons and their clients give notice that: 1. They are not authorised to make or give any representations or warranties in relation to the property either here or elsewhere, either on their own behalf or on behalf of their client or otherwise. They assume no responsibility for any statement that may be made in these particulars. These particulars do not form part of any offer or contract and must not be relied upon as statements or representations of fact. 2. Any areas, measurements or distances are approximate. The text, photographs and plans are for guidance only and are not necessarily comprehensive. It should not be assumed that the property has all necessary planning, building regulation or other consents and the Agents have not tested any services, equipment or facilities. Purchasers must satisfy themselves by inspection or otherwise. Generated on 26/05/2026