



Location

Kinetica is located on Ramsgate Street which is a short walk from Dalston Junction station. The Hackney area has become increasingly popular with tech, media and design companies attracted by the good transport links and emerging hospitality scene. The area has an abundance of parkland and open space with Hackney Downs and London Fields both close by. The A10 provides rapid access to the City and connections for the M25.

Transport

Dalston Junction Station (5 mins)

Dalston Kingsland Station (5 mins)

Excellent bus network including routes; 30, 38, 56, 242, 277.

Description

The office is situated in a building known as Kinetica on the ground floor, and benefits from its own street entrance with large windows on both elevations.

An architecturally designed refurbishment has just been completed and the offices are now ready for immediate occupation.

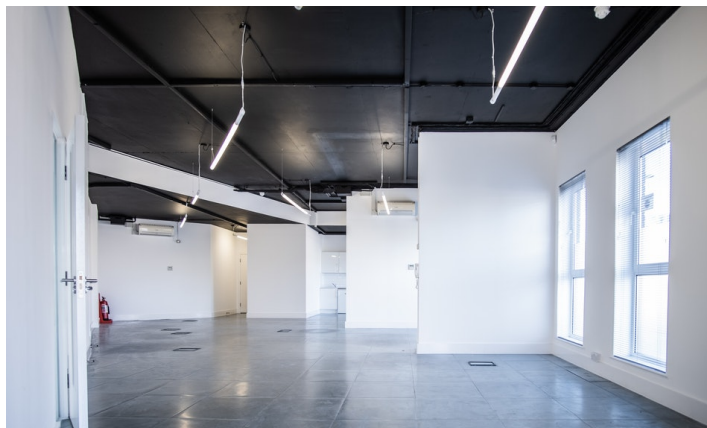
Ellis Brown
55 St. John Street
London
EC1M 4AN

T. 020 3745 0060
reception@ellisbrowncommercial.com

Property Misdescriptions act 1991 / Misdescriptions Act 1967. Ellis Brown for themselves and for the vendors of this property whose agents they are, give notice that: These particulars do not form any part of any offer or contract: the statements contained therein are issued without responsibility on part of the firm or their clients and therefore are not to be relied upon as statements or representations of fact, any intending purchaser must satisfy himself as to the correctness of each statement made herein: and the vendor does not make or give, and neither the firm nor any of their employees have the authority to make or give, any representation or warranty whatever in relation to this property. All prices exclude VAT. Generated on 19/07/2021

OFFICE TO LET

15 Ramsgate Street, E8 2FD / 1,250 sq ft



Features

Newly refurbished self contained office
Excellent natural daylight
Air conditioning
Fully accessible raised floor
Private meeting room
Fitted kitchenette
WCs

Floor Space

Ground	1,250 sq ft / 116.13 sq m
Total	1,250 sq ft / 116.13 sqm

Service Charge

£2.10 per sq ft

Business Rates

£8.91 per sq ft
(based upon Rateable Value: £21,750)

Interested parties should verify the business rates with the London borough of Hackney.

Rent

£25 per sq ft

Contact

Tom Latham
07398 010 223
tlatham@ellisbrowncommercial.com

Lucy Cooper
07922 584 901
lcooper@ellisbrowncommercial.com