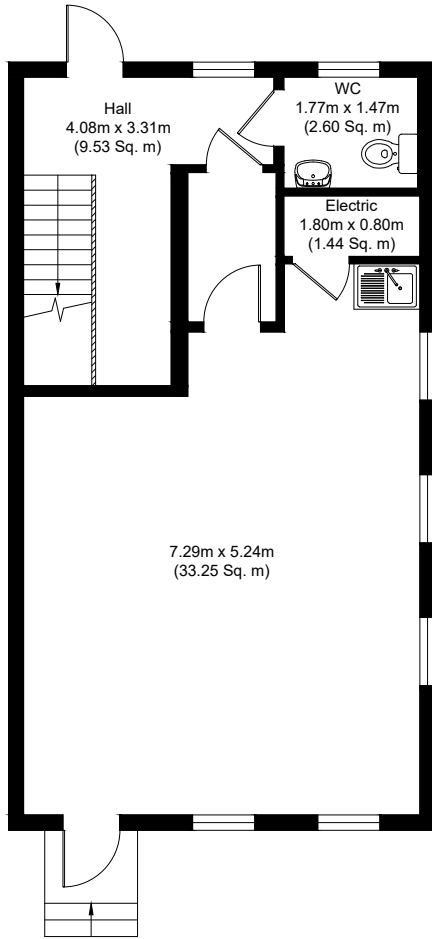
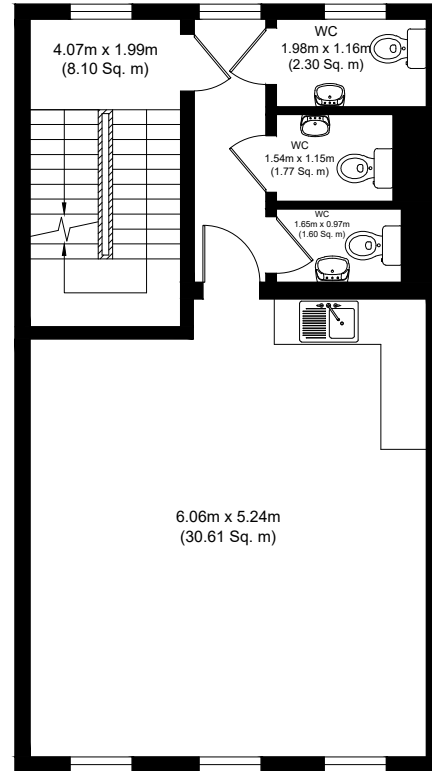


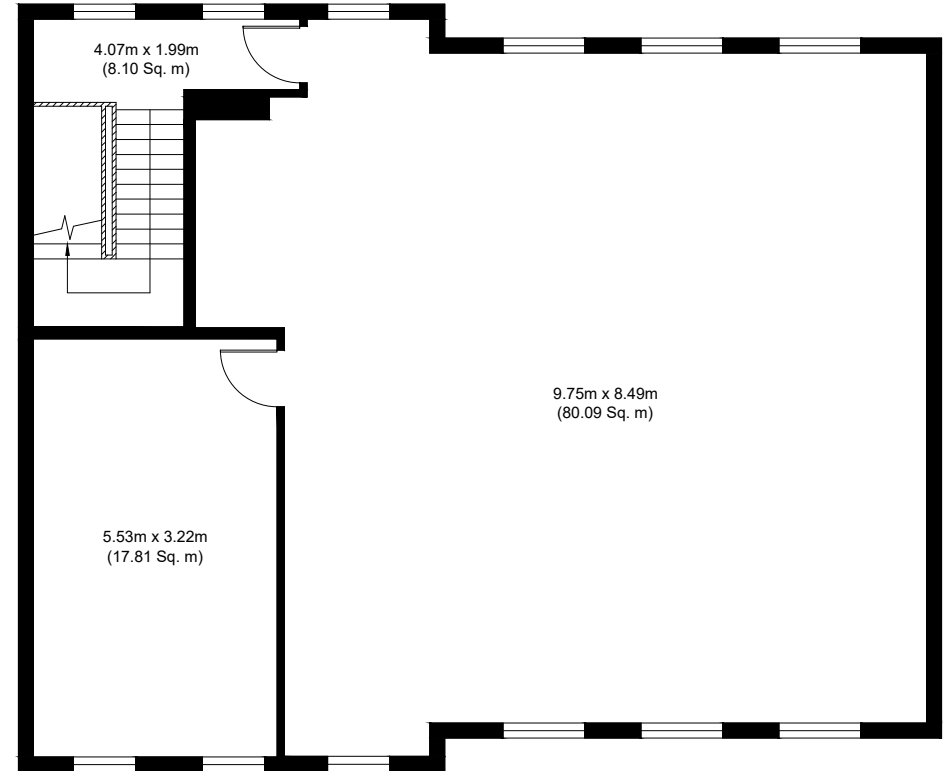
4 Theobald Court, Theobald Street, Borehamwood, Hertfordshire, WD6 4RN



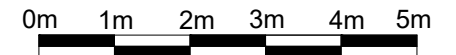
Ground Floor



First Floor



Second Floor



Scale 1:100 @ A4

Floor plan measurements are approximate and are for illustrative purposes only. While we do not doubt the floor plan accuracy and completeness, you or your advisors should conduct a careful, independent investigation of the property in respect of monetary valuation.

Stated measurements are generally the longest measurements of the rooms, times by, the longest points of the room. This does not mean if you times them it will equal the room size as most rooms are not perfect rectangles.