

**fisher  
german**

# Moorgate

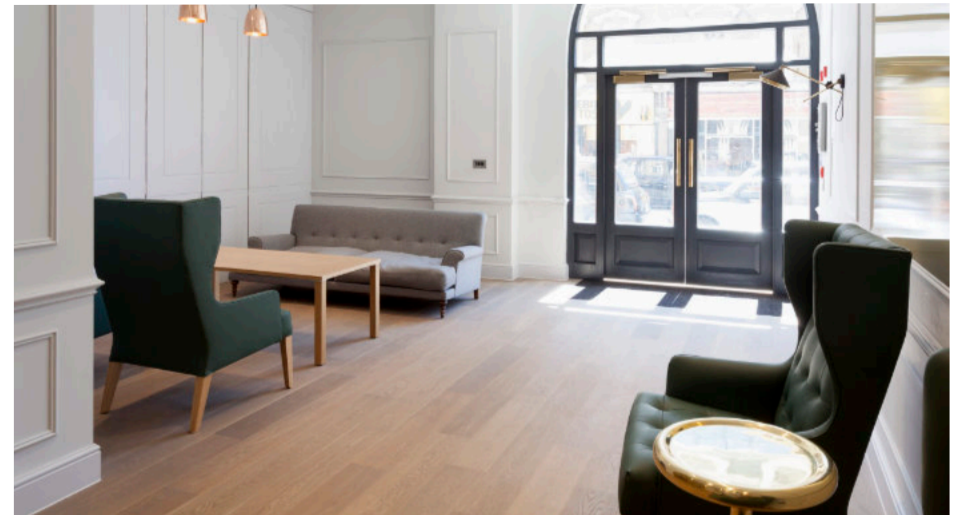
50 Liverpool Street  
London, EC2M 7PY

3 - 30 Desks  
Self Contained Offices

155 - 1,665 Sq.ft



**Licence** | £2,000 - £2,500 + VAT pcm



## Accommodation

### Description

Part of Liverpool Street station, this historic workspace puts you at the centre of life in the capital.

### Licence Term

New Licences are available for a term by arrangement.

Desks	Size Sq.ft	Price (Monthly)	Available
3	155	£2,000	September 25
7	315	£4,200	Now
10	606	£8,500	August 25
30	1,665	£21,500	September 25

### Nearest station

Liverpool Street: 1 min walk

Moorgate: 3 min walk

Aldgate: 8 min walk

### Amenities



Lockers



Kitchen



Lounge



Showers

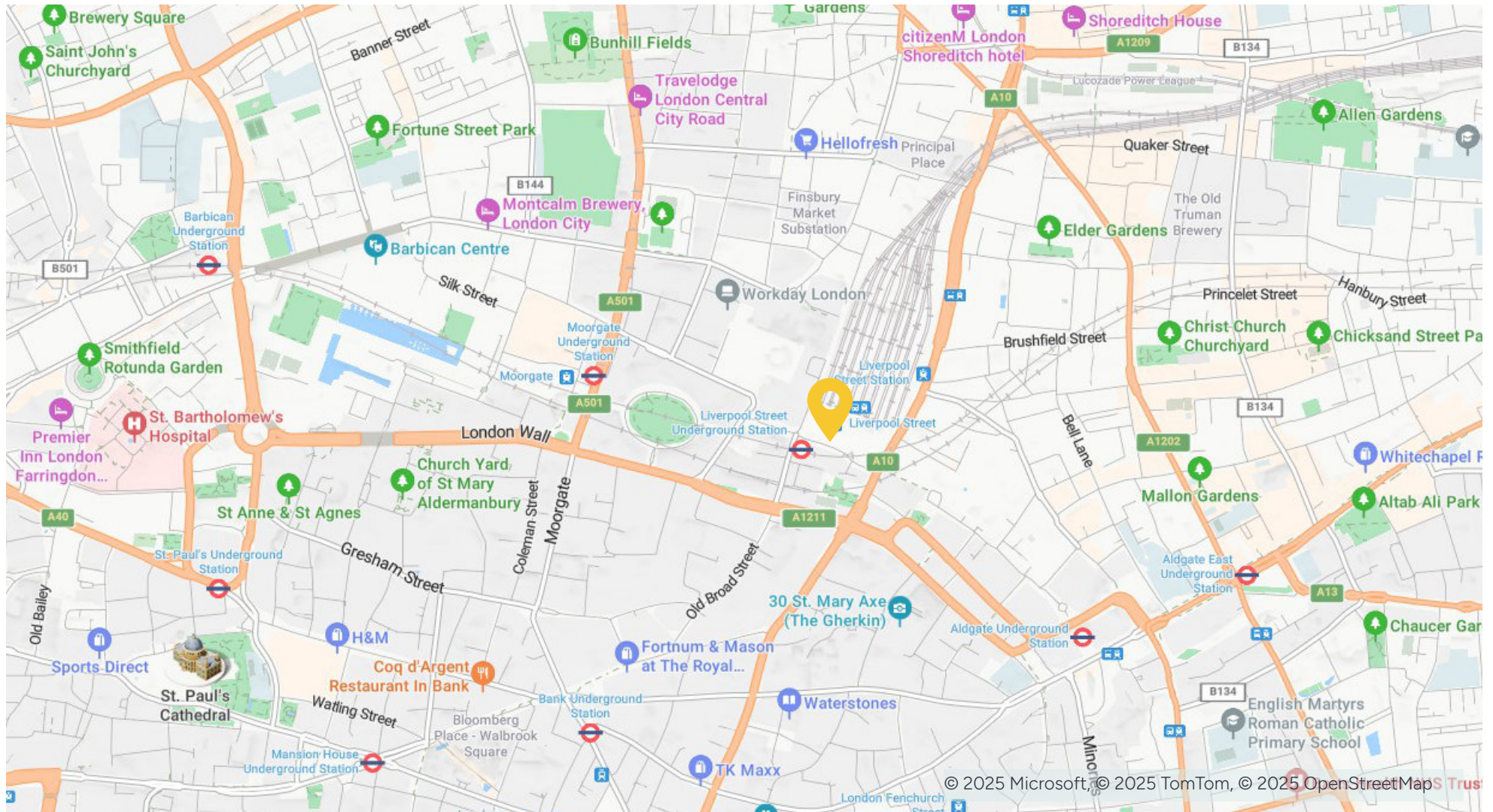


Phone  
Booths





## Location



## Contact us

Viewings by appointment only.

To arrange a viewing, please contact:



**Doug Gordon**

020 7747 3117

[Doug.gordon@fishergerman.co.uk](mailto:Doug.gordon@fishergerman.co.uk)



**Jessie High**

020 7747 3142

[Jessie.high@fishergerman.co.uk](mailto:Jessie.high@fishergerman.co.uk)

Please note: Fisher German LLP and its Joint Agents give notice that: 1. They have no authority to make or give any representation or warranty on any property whether on their own behalf or on behalf of their clients or otherwise. 2. They do not owe any duty of care to you and assume no responsibility for any statements, representations, warranties or otherwise made in the particulars and you should not rely on those in the particulars. 3. The particulars are produced in good faith are set out as a general guide only and do not constitute or form an offer or a contract or part thereof. 4. Any photographs, descriptions, plans, measurements, distances and any other details in the particulars are approximate estimates only taken as the property appeared at the time and should not be relied upon as factually accurate. 5. Fisher German assumes prospective purchasers/tenants have carried out inspections to satisfy themselves that the information in the particulars is correct.

Particulars dated July 2025. Photographs dated 2025.



This brochure is fully recyclable