



5th Floor
60 Charlotte Street
W1H 7JW

High Quality – Fully
Fitted Office Space

3,230 Sq. Ft

 **JLL** SEE A BRIGHTER WAY

5th Floor/ 60 Charlotte Street / London

Specification

High Quality Fit Out

- Fully fitted with desks and meeting rooms
- 8 Person board room
- 3 large private offices
- 14 desks
- High quality fitted kitchen
- Dedicated reception and WCs



Building Specification

- VRF Air conditioning
- LED lighting
- Exposed feature ceilings
- 2 x 9 person passenger lifts
- Terrific views north and south
- High quality shower and changing facilities
- Manned building reception
- EPC - B

Floor Areas & Costs

Floor	Area (sq ft)	Rent (per sq.ft)	Service Charge (per sq.ft)	Business Rates (per sq.ft)
5th	3,230	£135.00	£19.29	£44.68
Total	3,230	£436,050 PA	£62,307 PA	£144,316 PA

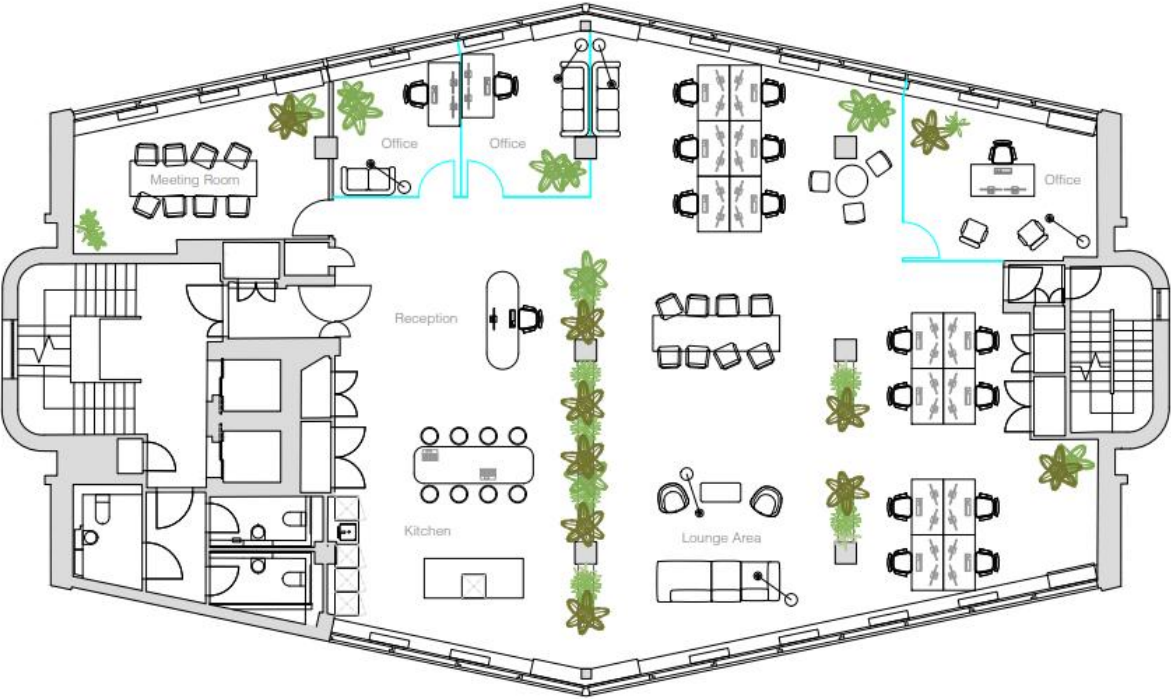
5th Floor/ 60 Charlotte Street / London



Floorplans

5thFloor

- 14 desks (1400 x 800 m)
- 3 x large private offices
- 1 x 8 person meeting room
- Kitchen/Breakout
- Reception



Disclaimer

JLL for themselves and for the vendors or lessors of this property whose agents they are, give notice that:- a. the particulars are set out as a general outline only for guidance and do not constitute, nor constitute part of, an offer or contract; b. all descriptions, dimensions, references to condition and necessary permissions for use and occupation, and other details are believed to be correct, but any intending purchasers, tenants or third parties should not rely on them as statements or representations of fact but satisfy themselves that they are correct by inspection or otherwise; c. no person in the employment of JLL has any authority to make or give any representation or warranty whatever in relation to the property; d. Any images may be computer generated. Any photographs show only certain parts of the property as they appeared at the time they were taken. © 2026 Jones Lang LaSalle IP, Inc. Brochure produced March 2026.

Alex Mackay

Associate

Alex.Mackay@jll.com

+44 7756222669

Isabella Woodhead

Senior Surveyor

Isabella.Woodhead@jll.com

+44 7709507329