

FLOORPLAN

Total Ground and Basement - 2,477 sq ft (230m²)

GROUND FLOOR

2 Great Hampton Street

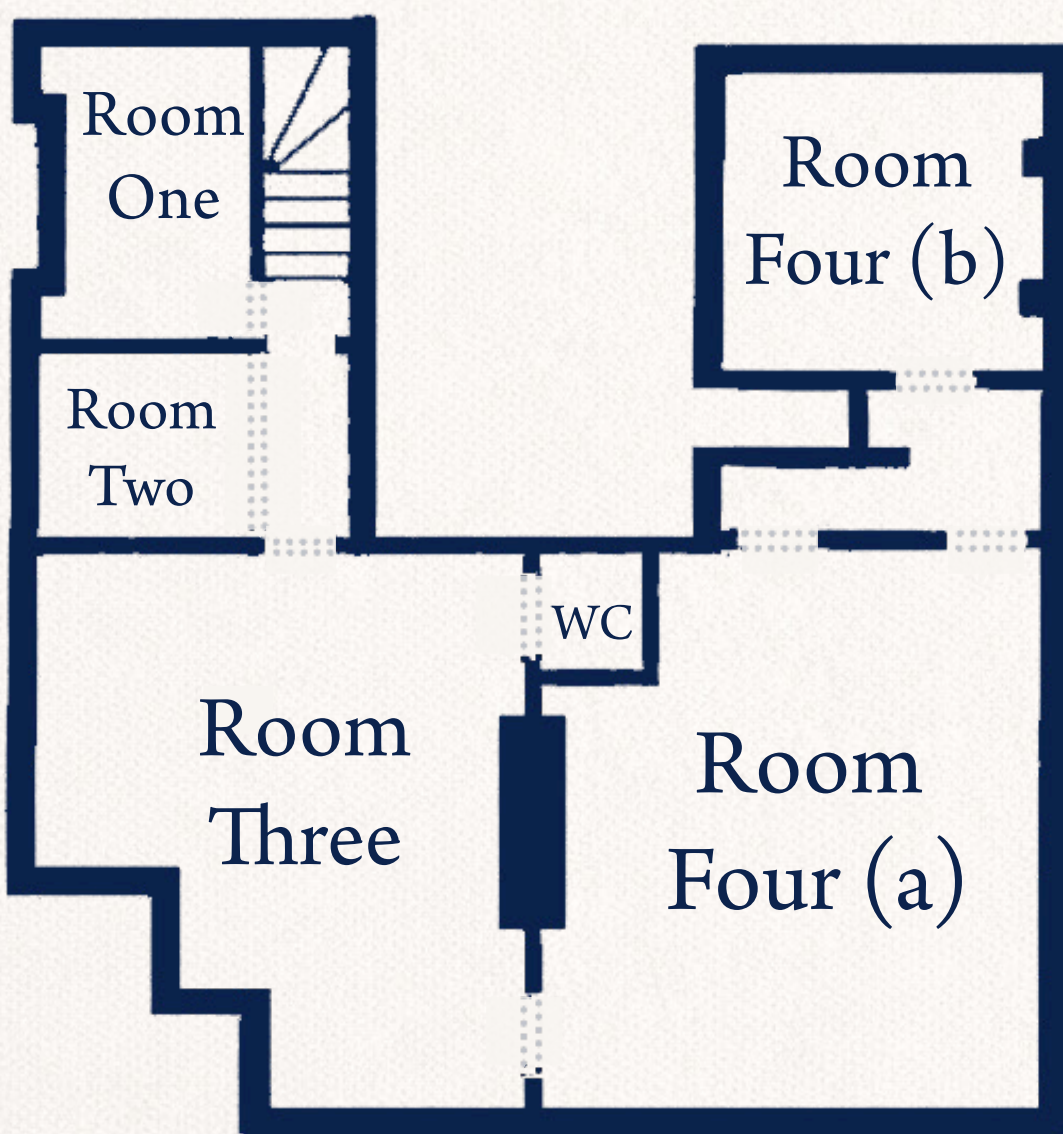
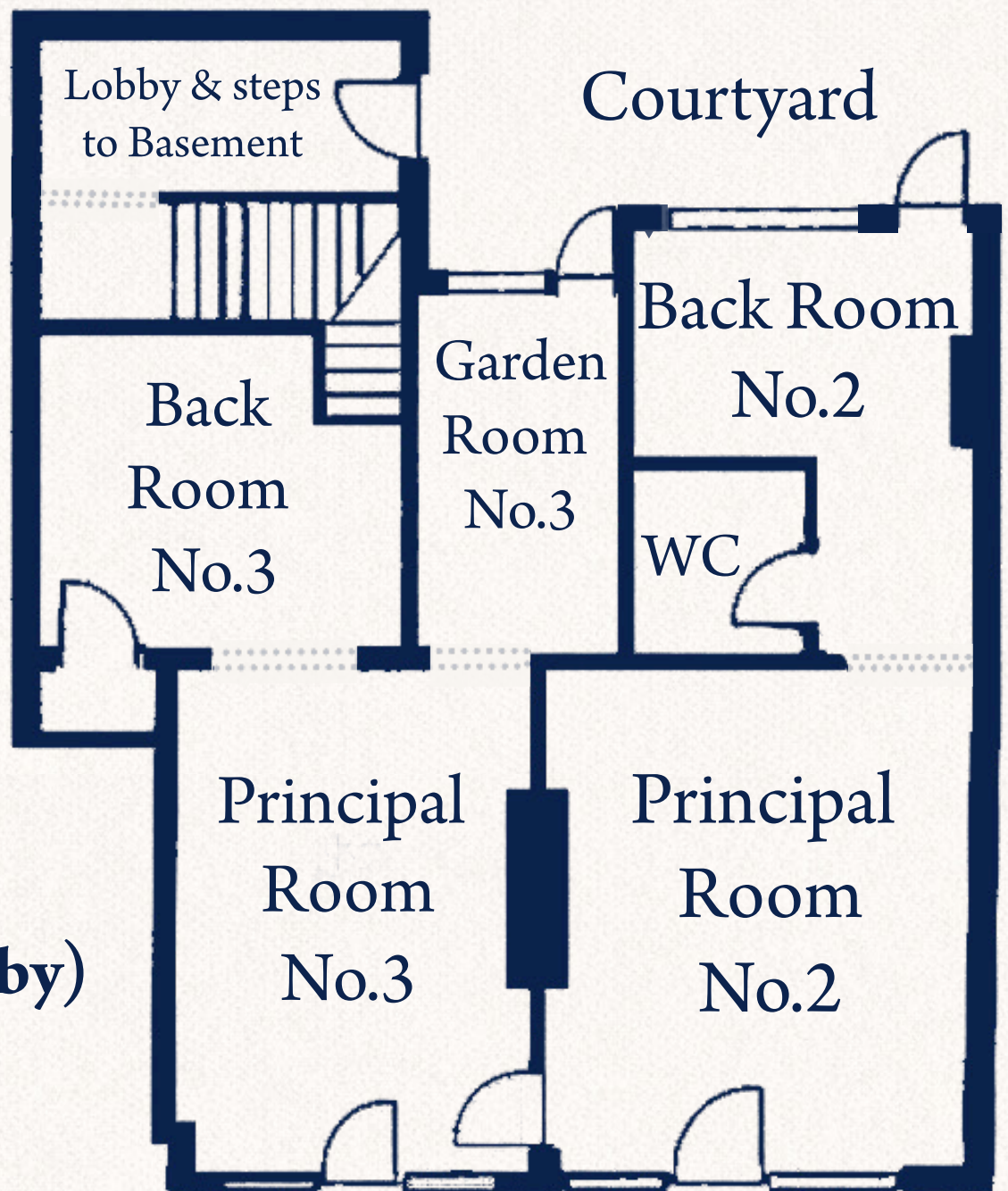
497 sq ft
(46.2 m²)

3 Great Hampton Street

594 sq ft
(55.2 m²)

**Total Ground Floor
(Excl. Basement Lobby)**

1,091 sq ft
(101.4 m²)



BASEMENT

Room One

111 sq ft (10.3 m²)

Room Two

36 sq ft (3.3 m²)

Room Three

383 sq ft (35.5 m²)

Room Four (a)&(b)

597 sq ft (55.5 m²)

Total Basement

1,387 sq ft (128.0 m²)