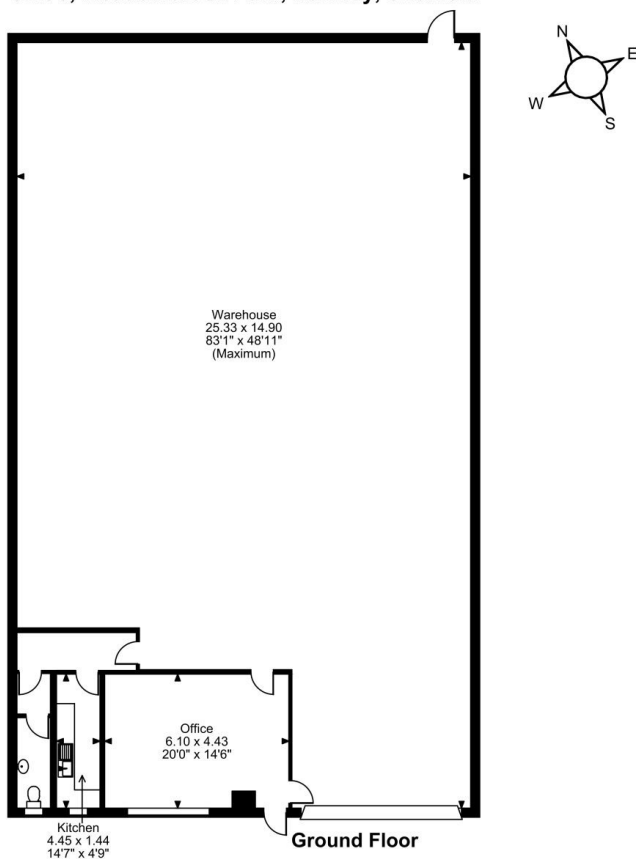


Floor Plans

UNIT 5 - 4061 SQ FT | MEADOWBROOK PARK TRADING ESTATE

Station Road, Eckington, Sheffield, S20 3PJ

Unit 5, Meadowbrook Park, Halfway, Sheffield



FOR ILLUSTRATIVE PURPOSES ONLY - NOT TO SCALE

The position & size of doors, windows, appliances and other features are approximate only.

© ehouse. Unauthorised reproduction prohibited. Drawing ref. dig/8641666/SMA