



## 5 Central Road, Harlow, CM20 2ST

Industrial/Logistics To Let | £270,000 per annum | 34,781 sq ft

Industrial/Warehouse unit with offices

# 5 Central Road, Harlow, CM20 2ST

## Summary

- Rent: £270,000 per annum
- Business rates: According to The Valuation Office Agency website [www.voa.gov.uk](http://www.voa.gov.uk), the Rateable Value is £162,000
- Legal fees: Each party to bear their own costs
- EPC: C (56)
- Lease: New Lease

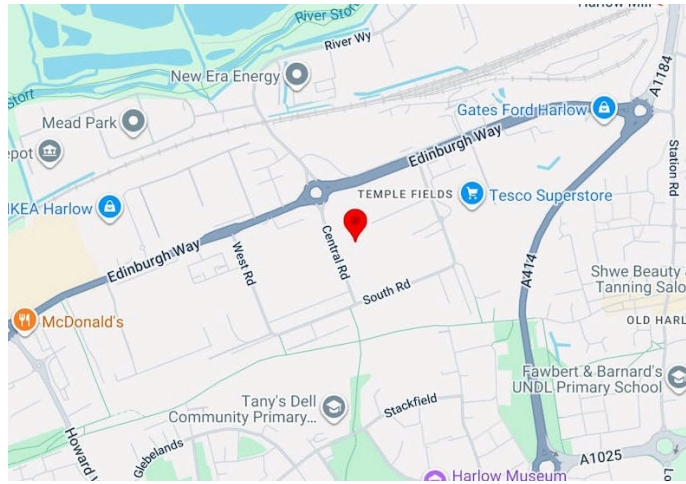
## Further information

- [View details on our website](#)

## Contact & Viewings

James Issako MRICS  
01279 620 200 | 07817 269 490  
[ji@dww.co.uk](mailto:ji@dww.co.uk)

Rhys Southall MRICS  
01279 620 221 | 07960 548878  
[rs@dww.co.uk](mailto:rs@dww.co.uk)



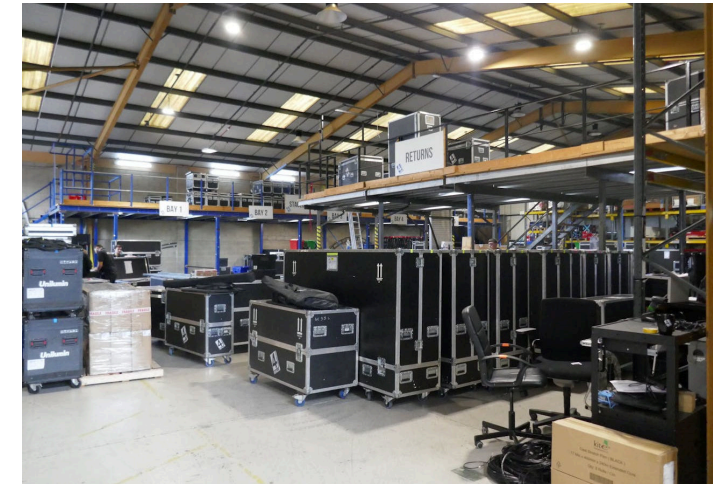
## Key Points

- Electric roller shutter loading door (4.5m wide x 5.1m high)
- 35 car parking spaces and a gated yard
- Eaves height varies between older and newer parts from a minimum of 4.7m to a maximum of 5.3m
- Modern open plan office with comfort cooling and heating

## Description

The Property comprises a detached industrial/warehouse unit with two-storey offices to the front elevation abutting Central Road. To the rear of the office accommodation is the as built warehouse/industrial space with further office space at mezzanine floor level.

At the rear of the original building, a modern steel frame warehouse extension has been erected providing clear span storage/production space. This space interconnects with the original built space with loading via a roller shutter door. Additionally, there are 4 mezzanine floors providing an additional c.6,000 sq ft of storage space, if required. Externally, there is a gated and fenced yard providing good loading/unloading provisions and 35 marked car parking spaces including spaces to the front of the site.



## Location

The property is located at the heart of the Templefields industrial area. It is conveniently situated close to the retail and trade parks on Edinburgh Way where occupiers include Tesco, Subway, Costa Coffee, Travis Perkins and Howdens Joinery.

Harlow Mill Station is within easy walking distance and offers a regular service to London Liverpool Street via Tottenham Hale (Victoria Line) to the South, and Stansted International Airport and Cambridge to the North. Numerous bus routes serving the outlying districts are available from Edinburgh Way. Junction 7 of the M11 is c.4 miles away and intersects with the M25 at Junction 27, c.5 miles to the South.

## Accommodation

Description	sq ft	sq m
Ground floor	28,519	2,649.50
First floor original offices	2,325	216
First floor mezzanine office	4,447	413.14
Mezzanine storage	6,233	579.06
<b>Total</b>	<b>41,524</b>	<b>3,857.70</b>

### MISREPRESENTATION CLAUSE

(i) Derrick Wade Waters Ltd trading as Derrick Wade Waters (and their Joint Agents where applicable) for themselves and for the vendors or lessors of these properties for whom they act, give notice that:

(ii) These particulars are a general outline only, for the guidance of prospective purchasers or tenants, and do not constitute the whole or any part of an offer or contract;

(iii) Derrick Wade Waters Ltd cannot guarantee the accuracy of any description, dimensions, references to condition, necessary permissions for use and occupation and other details contained herein and prospective purchasers or tenants must not rely on them as fact or representation or warranty or enter into any contract in relation to the property in reliance upon them;

(iv) No employee of Derrick Wade Waters Ltd (and their Joint Agents where applicable) has any authority to make or give any representation or warranty or enter into any contract whatsoever in relation to the properties;

(v) All prices quoted in these particulars may be subject to VAT in addition, and

(vi) Derrick Wade Waters Ltd will not be liable, in negligence or otherwise for any loss arising from the use of, or reliance upon, these particulars;

(vii) All quoting rents, prices and terms are expressed subject to contract;

(viii) In the case of new development or refurbishment, prospective buyers or tenants should not rely on any artists' impressions or architects' drawings or specification or scope of works or amenities, infrastructure or services or information concerning views, character or appearance and timing concerning availability or occupation and prospective buyers or tenants must take legal advice to ensure that any expectations they may have are provided for direct with the seller or landlord and Derrick Wade Waters shall have no liability whatsoever concerning variation or discrepancy in connection with such matters.

