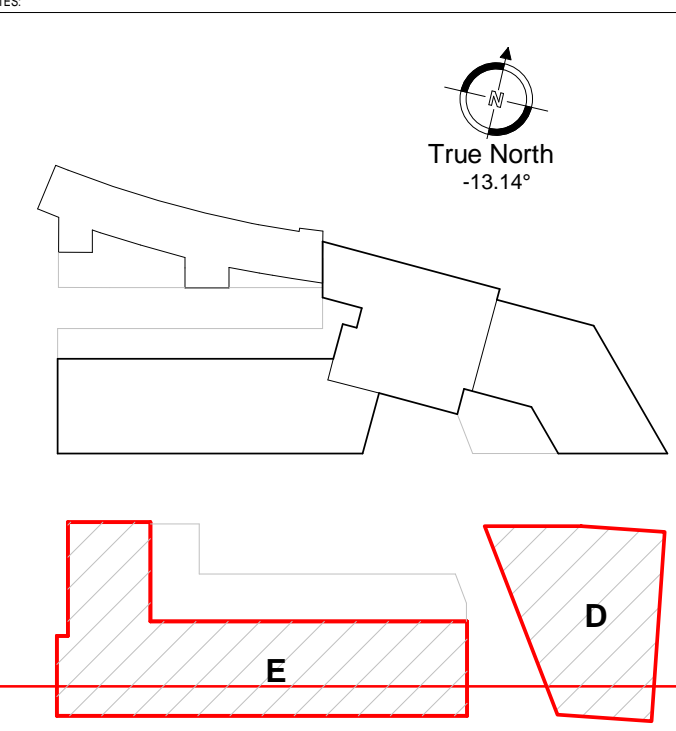


To be read in conjunction with the 'Accommodation Schedule' revision P23.

For clarification on fitted-out and shell areas refer to drawing A-04-2-500.



**EV Key:**

**Service Location Key:**

G.W.E.T.F. Denotes target location of service provision.

G = Gas  
W = Water  
E = Electricity  
T = Telephone (Duct)  
F = Fire Alarm Interface Panel

**Key:**

By tenant.

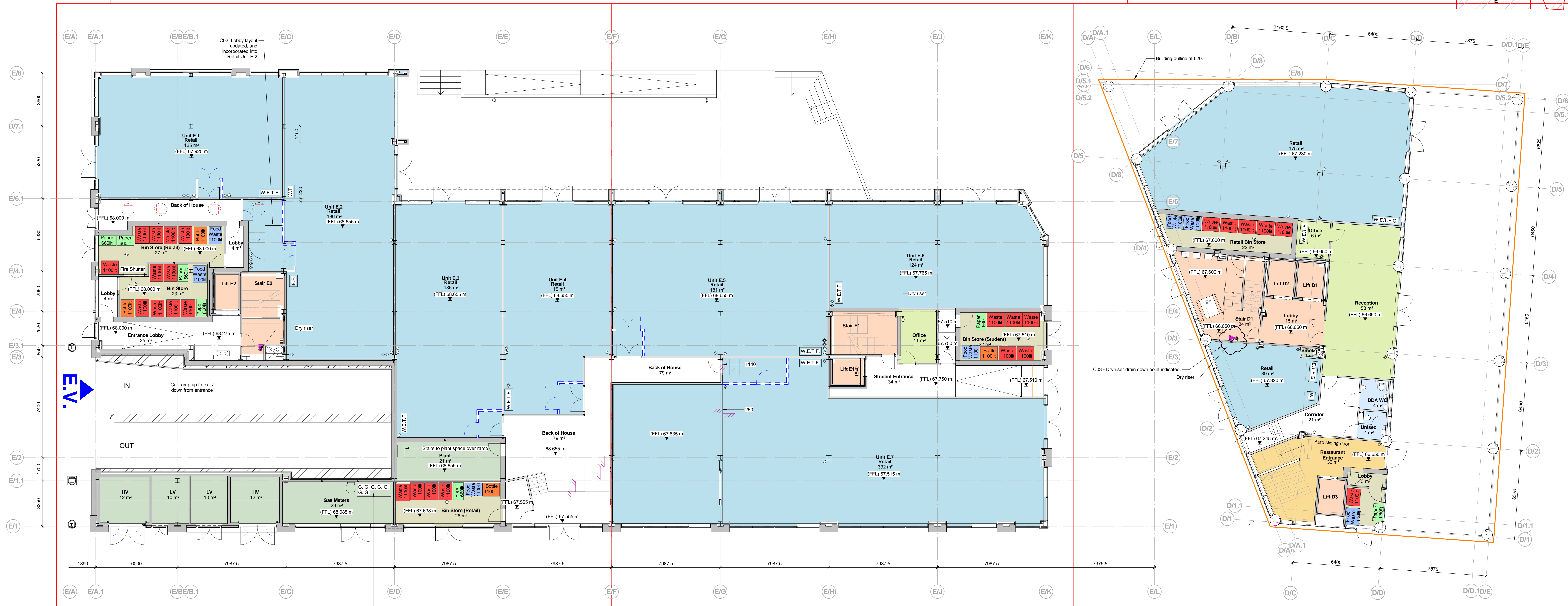
To be read in conjunction with the Architectural Design Specification.

C03 - Level of Fitout Key added.

Refer to setting out plan A-20-E-010.1

Refer to setting out plan A-20-E-010.2

Refer to setting out plan A-20-E-010.3



1 04 - Level 10  
1:100

Block E retail to connect to gas supply within gas meter room. No connections to be provided.

**Room Types**

- Amenities
- Circulation (Common)
- Circulation (Vertical)
- Retail (SU)
- Store
- Plant
- Business
- Dining

REVISION C03 BY JB CHECKED TL DATE 23/08/2018  
Dry riser location indicated in Block B Stair D1. Service locations indicated. Service locations key added. By tenant items identified.

REVISION C02 BY MC CHECKED TL DATE 27/07/2018  
Revised as noted. Smoke lobbies by tenant in Block E Retail units indicated. Dry riser locations indicated in Block E stairs.

REVISION C01 BY JB CHECKED TL DATE 13/07/2018  
Issued for Contract. Issued for Construction.

REVISION P12 BY JB CHECKED TL DATE 15/06/2018  
Accommodation schedule note added. EV Signage locations added.

REVISION P11 BY JB CHECKED TL DATE 21/05/2018  
Setting out references added. Mezzanine access removed. Gas meter room updated. Bike store removed (now additional medical centre area).

**CONTRACT  
CONSTRUCTION**



**New Era Square, St Mary's Gate, Sheffield. Phase 2**

**GA Plan Level 10**

Scale: 1:100 @ A0 Date: Nov 2016

**Hadfield Cawkwell Davidson**

Broomgrove Lodge, 13 Broomgrove Rd, Sheffield, S10 2JZ. T 0114 266 8181 www.hcd.co.uk  
Architecture | Engineering | Interior Design | Masterplanning | Urban Design  
2013-077 | A-04-2-010 | C03