



TOWN CENTRE FIRST FLOOR OFFICE TO LET

CHILTERN HOUSE

DEAN STREET, MARLOW, BUCKS, SL7 3AA

1,035 sq ft (96.15 sq m)

TOWN CENTRE OFFICE TO LET WITH PARKING

Size: 1,035 sq ft

Rent: £28,000 +VAT per annum

Service charge: £8,890 +VAT per annum

Rateable Value: To be confirmed

Legal Fees: Each party to bear their own costs

EPC Rating: B (34)

An excellent opportunity to lease a modern, well-specified office suite in Marlow town centre. The accommodation is located on the first floor of Chiltern House, offering a professional working environment with excellent accessibility and on-site parking.



Air-conditioning



Carpet throughout



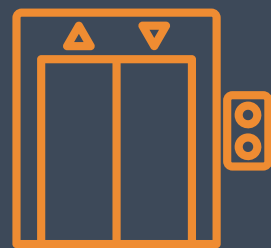
Kitchenette



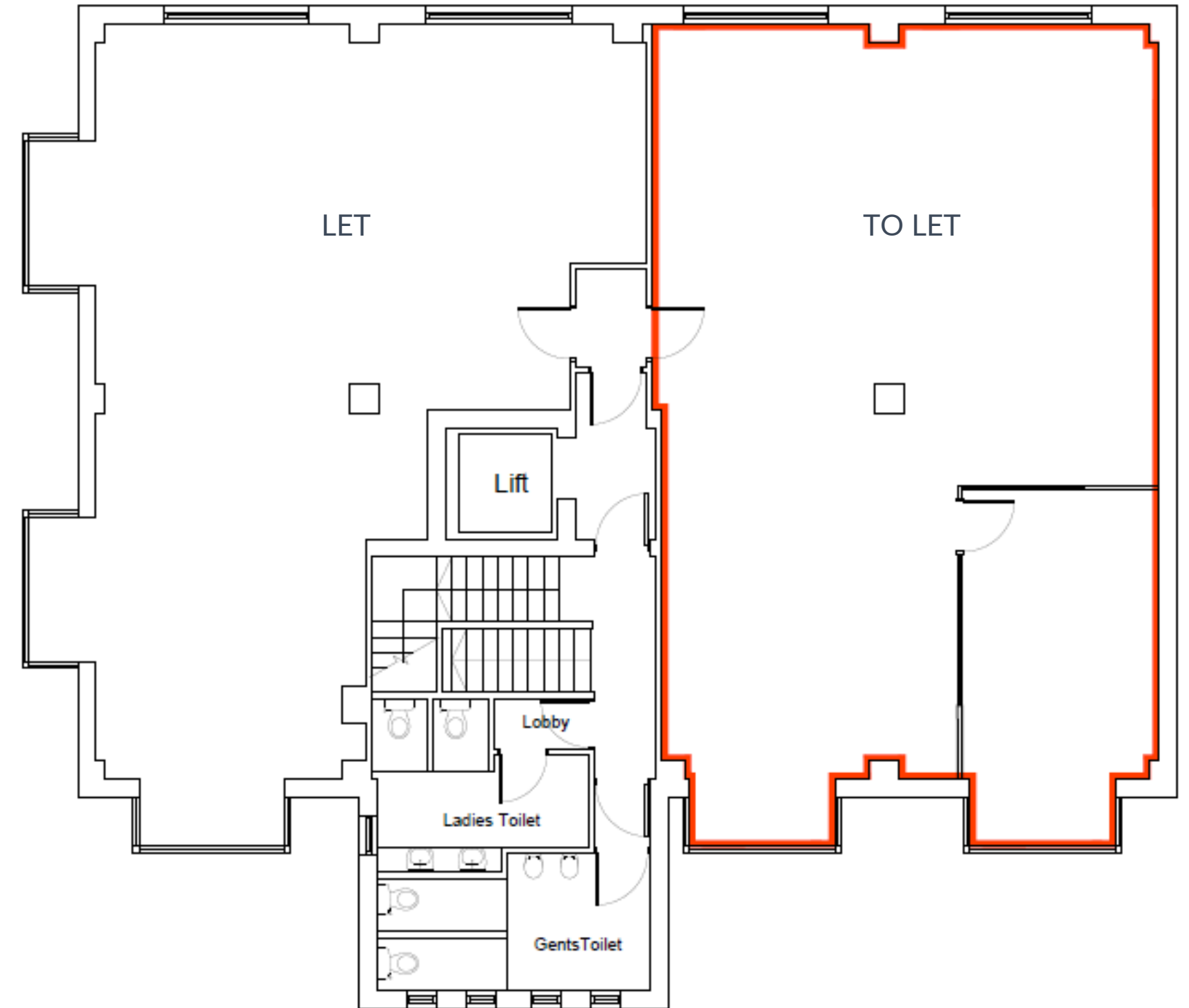
4 onsite parking spaces
(additional nearby if required)



Entry phone system



Lift



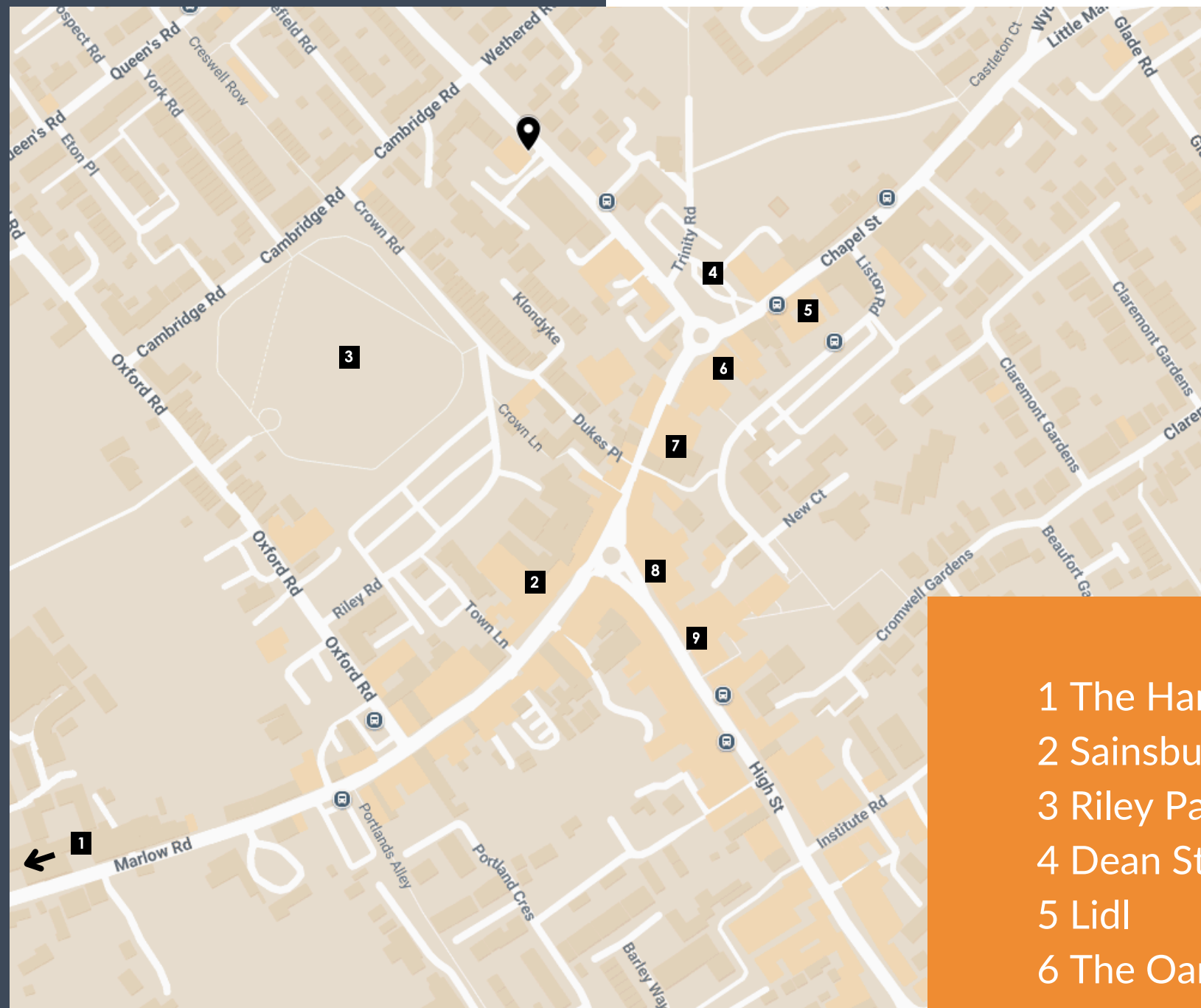
First floor



LOCATION

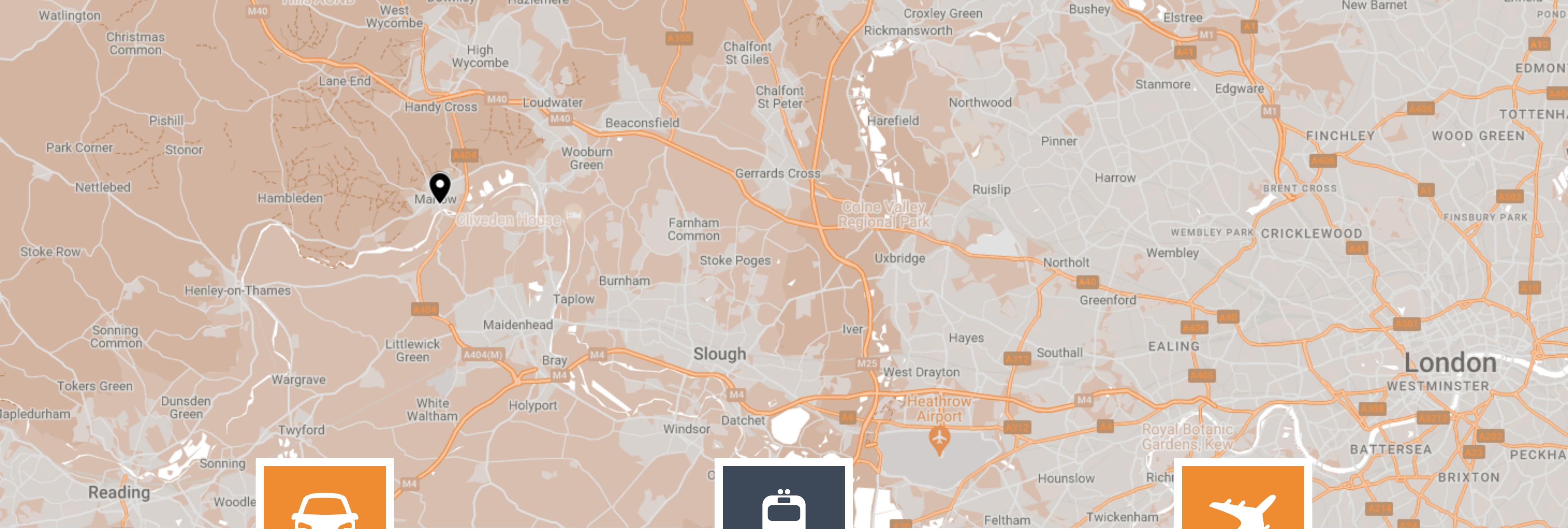
Marlow is an affluent and thriving riverside town, celebrated for its blend of work, leisure and wellbeing. With its vibrant high street, strong café culture and picturesque Thames setting, it offers an enviable lifestyle that helps businesses attract and retain talent.

Chiltern House is ideally located on Dean Street, just moments from Marlow's cafés, restaurants and independent shops. Higginson Park and the River Thames are a short walk away, providing a tranquil backdrop for lunchtime walks, informal meetings and post-work relaxation.



- 1 The Hand and Flowers
- 2 Sainsbury's
- 3 Riley Park
- 4 Dean Street Car Park
- 5 Lidl
- 6 The Oarsman
- 7 M&S Simply Food
- 8 Gail's Bakery
- 9 Caffé Nero





CAR

3 MILES TO J4 OF M40

The A404 connects Marlow to J4 of the M40 in 3 miles and to J8/9 of the M4 in 6.8 miles.



TRAIN

0.7 MILES TO MARLOW STATION

Walk to Marlow station in 14 minutes with regular services to Maidenhead where you can access the Elizabeth Line into London.



AIRPORT

20.6 MILES TO HEATHROW AIRPORT

Worldwide connections within easy reach of Marlow.

GET IN TOUCH



ADRIAN DOLAN

01494 839913
adriand@dbk.co.uk

LIAM ASH

01494 450951
liama@dbk.co.uk

Owned and managed by:

SORBON
ESTATES

For further information or to arrange an inspection please contact our agent.

Misrepresentation clause. These particulars are set out as a general outline only for the guidance of intending purchasers or lessees and do not constitute the whole or any part of an offer or contract. The information is compiled and given in good faith but without any responsibility whatsoever. Intending purchasers or tenants should not rely on them as statements or representations of fact.
April 2026.

Please note that all images are for illustrative and indicative purposes only. Please check with your Sorbon Estates representative for more information.