



A

BRAND

NEW

FLAGSHIP

CORNER

RESTAURANT

IN

THE

HEART

OF

SOHO

•

3,577

SQ

FT

FILM

150
WARDOUR
STREET
SOHO

HOUSE

AVAILABLE

AUTUMN

2024

•

AVAILABLE

AUTUMN

2024

•

AVAILABLE

AUTUMN

2024

TAKE CENTRE

11,000

average daily
passersby

135

metres from the
Elizabeth line

35

metre
frontage

Film House – Soho



External view of the restaurant unit

Introducing a rare new restaurant opportunity on a stylish corner of primetime Soho.

Down where the buzz of Wardour Street meets the canopied cool of Sheraton Street, Film House stars a show-stopping 35m return frontage designed to draw the eye.

Just 135 metres from Tottenham Court Road and the Elizabeth Line, this corner plot is an extraordinary opportunity for constant footfall throughout the day and into the night, seven days a week.

STAGE



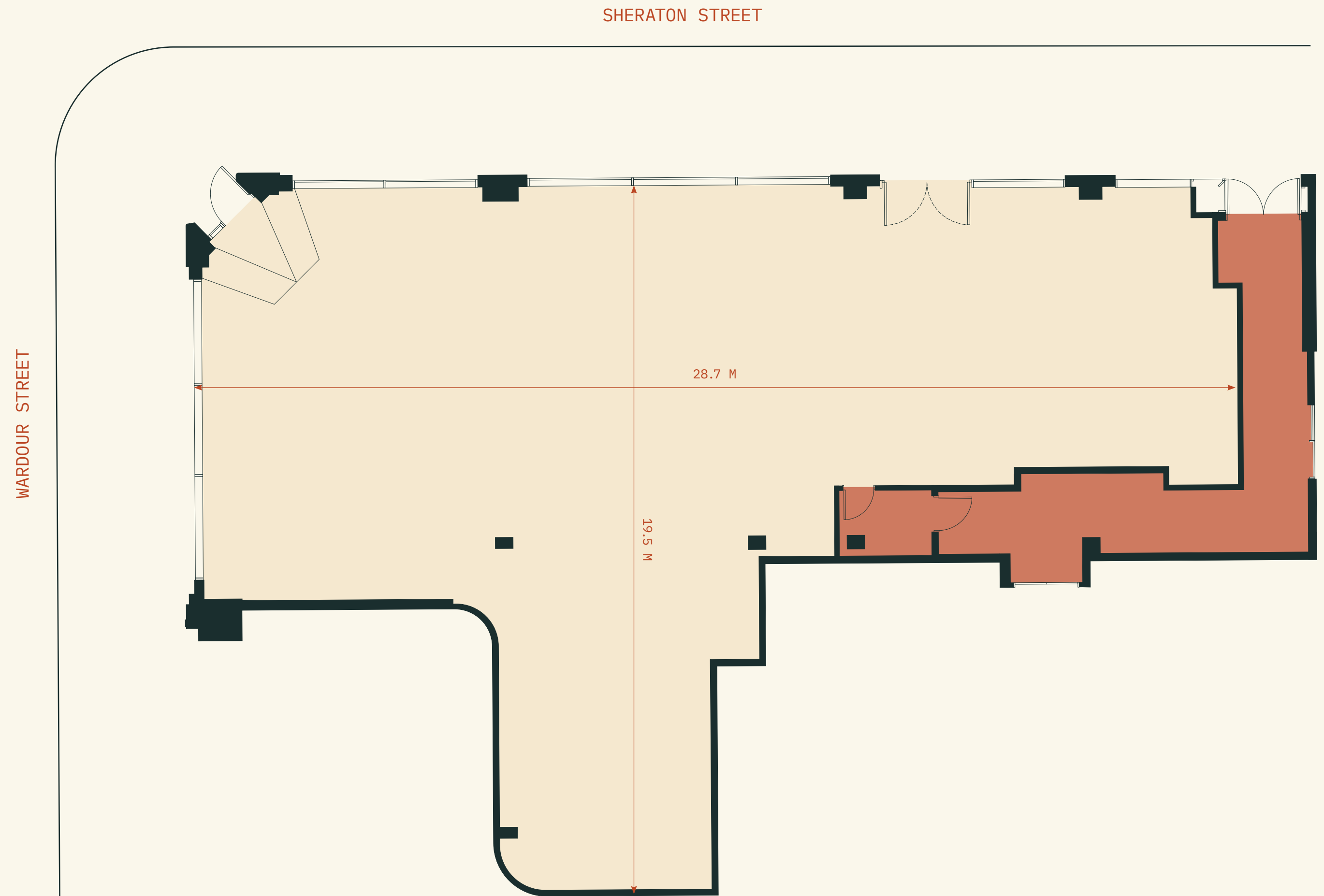
Internal view of the restaurant

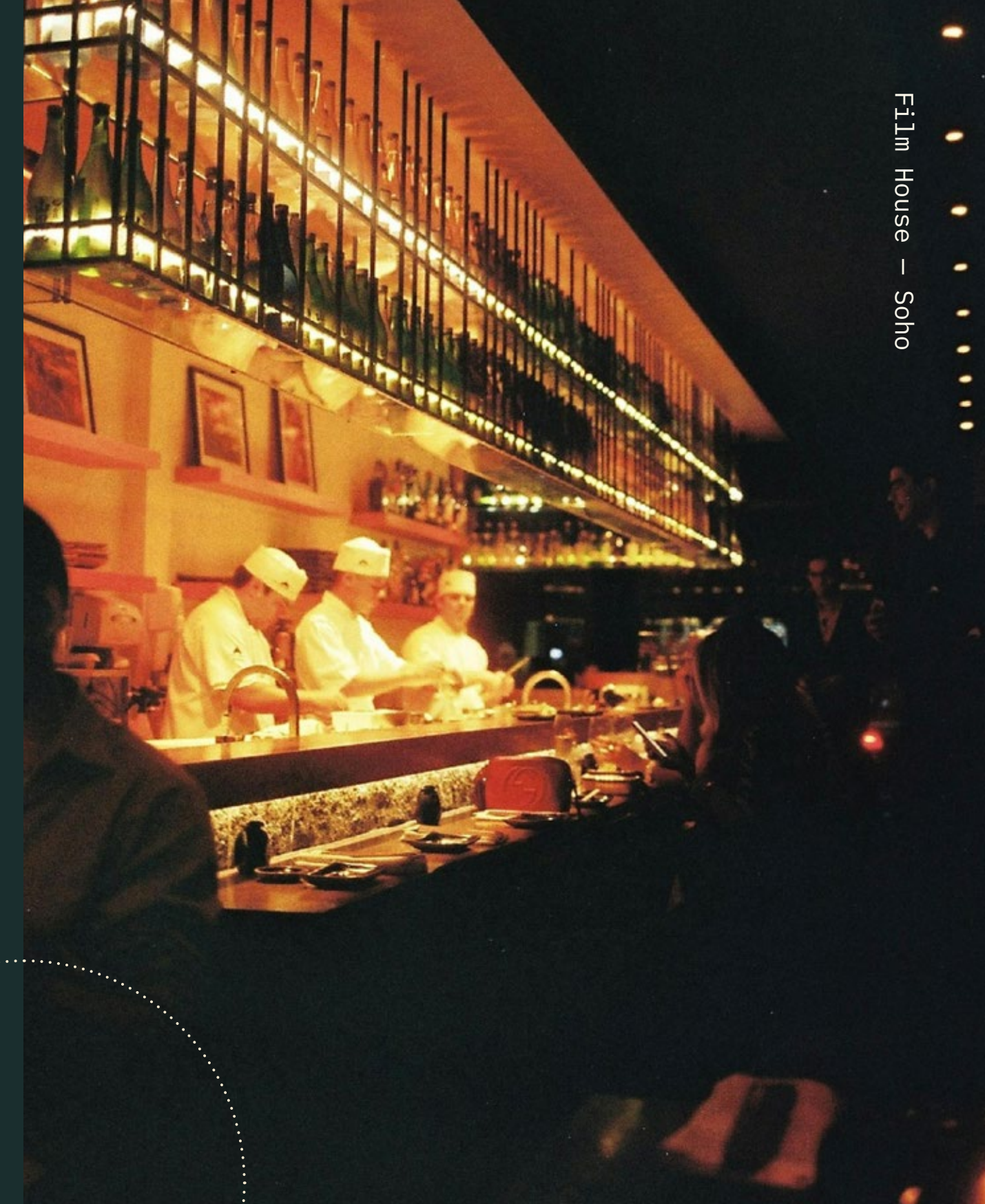
FLOORPLAN

3,577 sq ft / 332 sq m

- Class E unit
- New double-glazed aluminium shop front
- Glazed aluminium doors
- Delivered as a shell with pre-formed void for dumbwaiter
- 35m frontage puts your business in the spotlight
- 3.5m high ceiling and a clear, open floor plan
- Potential for awning & outdoor seating
- Column free trading space

GROUND FLOOR





The restaurant sits at the corner of Film House, an art deco building once home to the pioneering production company, Pathé.

In the early 1900s, British Pathé began documenting cultural life on film for the first time – and Film Row was born. Suddenly, the building was playing host to a revolving cast of celebrities, politicians and royalty for interviews and shoots. Today, film reels have given way to social media, but Soho remains a backdrop in demand.



REEL HISTORY



A NEW CAST

Perhaps it's the cinematic past, but Soho remains a master of reinvention. A blend of glitz and grit, neon and sophistication, this is still the place to be and be seen. Londoners and visitors congregate here for theatre and jazz, designer shopping, and international cuisines as transporting as any motion picture. Those lucky enough to stay the night get their pick of London's hippest hotels.



Doppo



Frith Street



Scarlett Green



Lina Stores



D'Arblay Street



Soho Hotel



Milk Beach



Dean Street Townhouse



Mountain



Barrafina



The Blue Post



Quo Vadis



Temper

ONE PLOT. TWO STORIES.

At the corner of Wardour and Sheraton, Film House gives you the best of both worlds. A buzzing thoroughfare with main character energy, Wardour Street lends you visibility and status, while Sheraton Street offers a more secret Soho vibe. Perfect for a canopied street front, this new shortcut to the Elizabeth line is a star in the making.

142 WARDOUR STREET,
LONDON, W1F 8ZU



Film House – Soho





ALL STAR NEIGHBOURS

DINING & NIGHTLIFE

- | | |
|-------------------------|------------------------|
| 1. Miznon | 18. Bob Bob Ricard |
| 2. Berenjak | 19. Nopi |
| 3. The Ivy Café | 20. El Pastor |
| 4. Yauatcha | 21. Temper |
| 5. Café Boheme | 22. Inko Nito |
| 6. Lina Stores | 23. Sticks n Sushi |
| 7. Soho House | 24. Randall & Aubin |
| 8. Aimé Leon Dore | 25. Rudy's |
| 9. Mountain | 26. Aulis |
| 10. Kapara | 27. The Toucan |
| 11. Milk Beach | 28. 100 Wardour Street |
| 12. Daroco | 29. Kingley Court |
| 13. Hoppers | 30. Simmons Bar |
| 14. Barrafinia | 31. Mr Fogg's Gin Club |
| 15. Quo Vadis | 32. Sucre |
| 16. Chotto Matte | 33. Arros QD |
| 17. Social Eating House | 34. Berners Tavern |

HOTELS

- | | |
|---------------------|--------------------------|
| 1. Ham Yard Hotel | 5. Dean Street Townhouse |
| 2. The Soho Hotel | 6. W Hotel |
| 3. Hotel Café Royal | 7. Sanderson |
| 4. The Broadwick | |

ENTERTAINMENT

- | | |
|--------------------------|-------------------|
| 1. Soho Theatre | 6. Apollo Theatre |
| 2. The London Palladium | 7. Lyric Theatre |
| 3. Piccadilly Theatre | 8. Palace Theatre |
| 4. Prince Edward Theatre | 9. Ronnie Scotts |
| 5. Sondheim Theatre | |

NET ZERO NOW

Hines' dedication to people and the planet has been intrinsic to our transformation of Film House.

We're creating a Net Zero Carbon building and eradicating the use of fossil fuels by opting for Air Source Heat Pumps and renewable green energy tariffs.

Film House will also exceed the UK Green Building Council's 'Net Zero Carbon Framework' target of 130 kWh/m² per year for 2020-25. Instead, we're targeting the 2025-30 aspirations.



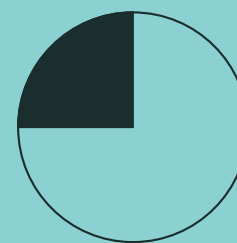
All electric building supplied by 100% renewable sources



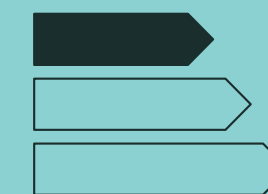
Roof-mounted PV panels



Targeting BREEAM Excellent



75% retained building structure



EPC A



Targeting Smart & Wiredscore Platinum

F I L M H O U S E

For more information, contact our joint agents:



George Collison
george.collison@savills.com
+44 (0)7590 329 557

Josh Leon
josh.leon@savills.com
+44 (0)7951 023 263



Ted Schama
ted@shelleysandzer.co.uk
+44 (0)7973 834 306

A transformation by

Hines

Architectural design by

**WHITE
RED
ARCHITECTS**

FILMHOUSE.LONDON

The Joint Agents for themselves and for the vendors or lessors of this property whose agents they are, give notice that: (1) The particulars are produced in good faith, are set out as a general guide only and do not constitute part of a contract, (2) No person in the employment of the Joint Agents has any authority to make or give any representation or warranty whatsoever in relation to this property, (3) Unless otherwise stated all prices and rents are quoted exclusive of VAT, (4) CGIs for indicative purposes only. February 2024.