

1-2 Domingo Street, Clerkenwell, London, EC1Y 0TA

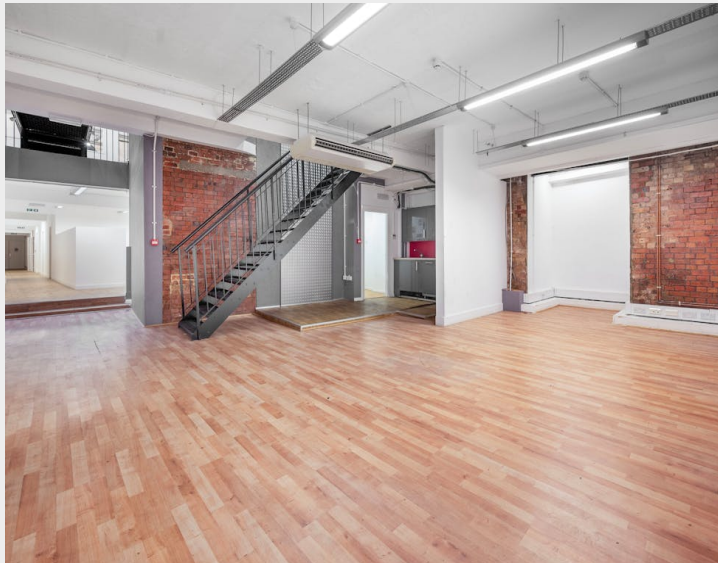
TO LET

Light Industrial

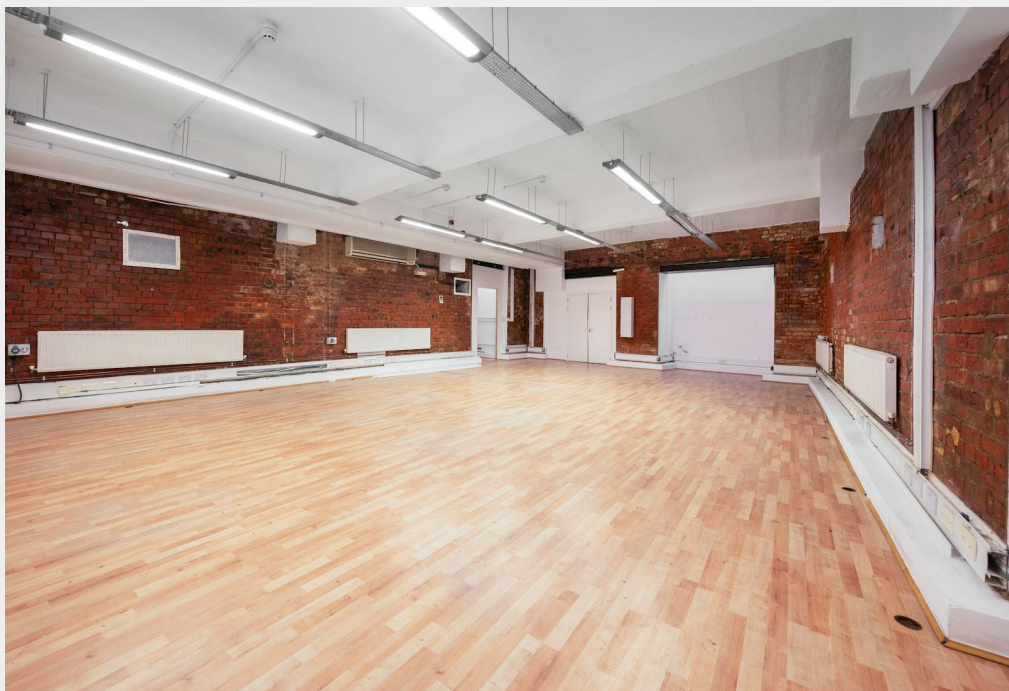
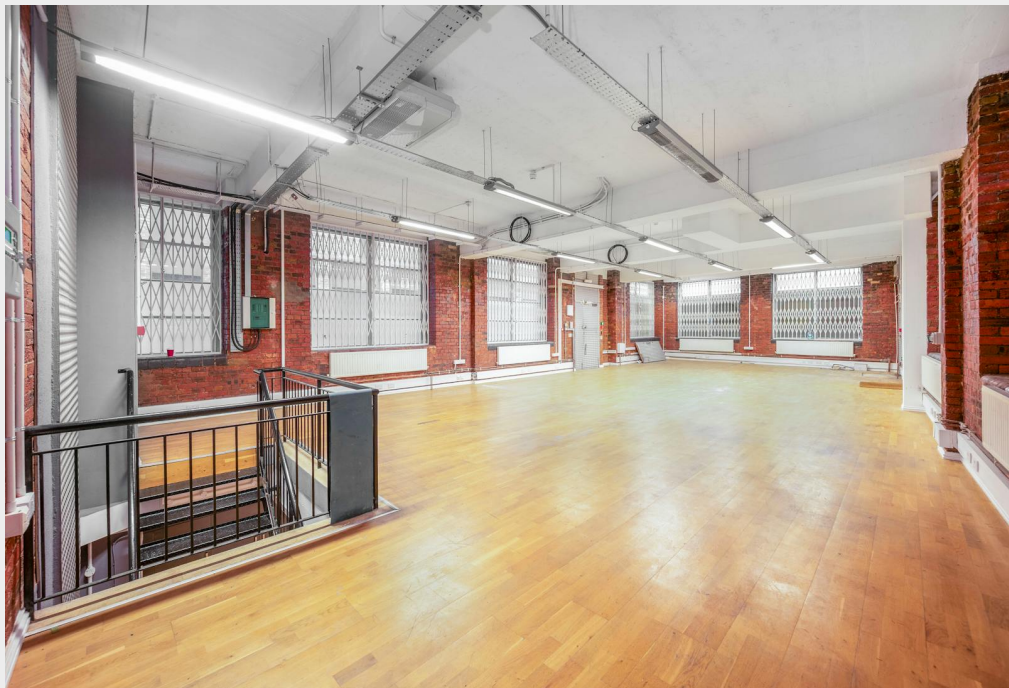
6,753 sq ft / 627.4 sq m

£210,000 per annum

Self-contained warehouse-style light industrial unit with loading bay and three-phase power in Clerkenwell.



- Self-contained commercial building
- Dedicated loading bay
- Three-phase power supply
- 3.8m ceiling heights (Ground Floor)
- Multiple access points
- Interlinking staircase between floors
- Security shutters

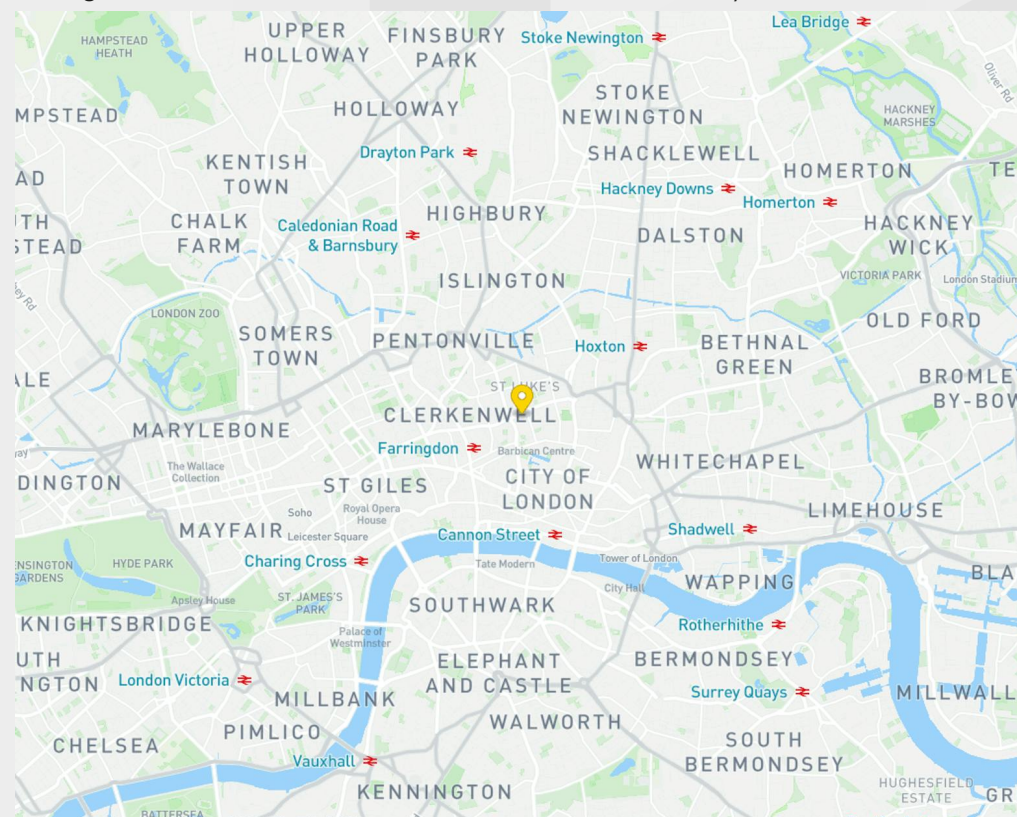


Description

1-2 Domingo Street is a refurbished former warehouse offering a rare combination of character and functionality. The property provides flexible light industrial accommodation across two floors, benefiting from adaptable floorplates that can be configured to suit a range of operational requirements. Features including exposed brickwork, generous ceiling heights and an internal footbridge create a distinctive warehouse environment. With a dedicated loading bay, multiple self-contained entrances, three-phase power supply and 3.8 metre+ ceiling heights, the property is ideally suited to a variety of light industrial, storage, production and urban logistics occupiers.

Location

Located just off Old Street on a prominent island site, the property is within easy walking distance of Old Street (approx. 7-8 minutes), Barbican (approx. 4-5 minutes) and Farringdon (approx. 9-10 minutes), offering access to the Elizabeth Line, Thameslink and Underground services, and is moments from Clerkenwell, Tech City, and Shoreditch.



Accommodation / Availability

Unit	Sq ft	Sq m	Rent	Rates payable	Service charge	Availability
Unit - Total	6,753	627.37	£210,000 /annum	£77,000 /annum	£13,495.44 /annum	Available

Tenure

New Lease

EPC

D

VAT

Not applicable

Configuration

Not Fitted

Contacts

Jon Cuthbert
07817 657 079
jon.cuthbert@strettons.co.uk

Joel Barnes
07974 625 109
joel.barnes@strettons.co.uk



Strettons and their clients give notice that: 1. They are not authorised to make or give any representations or warranties in relation to the property either here or elsewhere, either on their own behalf or on behalf of their client or otherwise. They assume no responsibility for any statement that may be made in these particulars. These particulars do not form part of any offer or contract and must not be relied upon as statements or representations of fact. 2. Any areas, measurements or distances are approximate. The text, photographs and plans are for guidance only and are not necessarily comprehensive. It should not be assumed that the property has all necessary planning, building regulation or other consents and the Agents have not tested any services, equipment or facilities. Purchasers must satisfy themselves by inspection or otherwise. Generated on 09/06/2026