



Pontegadea  
15 Exchange Place, Floor Split Options

14<sup>th</sup> January 2026

C2-1213

**c2:concepts**  
Considered, creative.

2

## Second Floor Splits

c2:concepts  
Considered, creative.



**Suite 2.1**  
**NIA (approx. 200 sqm / 2,154 sq ft)**

24 Workstations @ 8.3 sqm per person

- 1 – 10 Person Meeting Room
- 1 – Breakout

**Suite 2.2**  
**NIA (approx. 283 sqm / 3,044 sq ft)**

32 Workstations @ 8.8 sqm per person

- 1 – 10 Person Meeting Room
- 1 – 4 Person Furniture Meeting Pod
- 1 – Breakout

**Suite 2.3**  
**NIA (approx. 55 sqm / 589 sq ft)**

6 Workstations @ 9.2 sqm per person

**Second Floor**  
**Option B – Rev B**

SK-AL(70)2-02\_B



c2:concepts  
 Considered, creative.

[www.c2concepts.co.uk](http://www.c2concepts.co.uk)



**Suite 2.1**  
**NIA (approx. 129 sqm / 1,384 sq ft)**

16 Workstations @ 8.1 sqm per person

- 1 – 4 Person Meeting Room
- 1 – Breakout

**Suite 2.2**  
**NIA (approx. 329 sqm / 3,537 sq ft)**

44 Workstations @ 7.5 sqm per person

- 1 – 10 Person Meeting Room
- 1 – 6 Person Meeting Room
- 1 – Breakout
- 1 – Comms / Store Room

**Suite 2.3**  
**NIA (approx. 55 sqm / 589 sq ft)**

6 Workstations @ 9.2 sqm per person

## Second Floor Option C

SK-AL(70)2-03

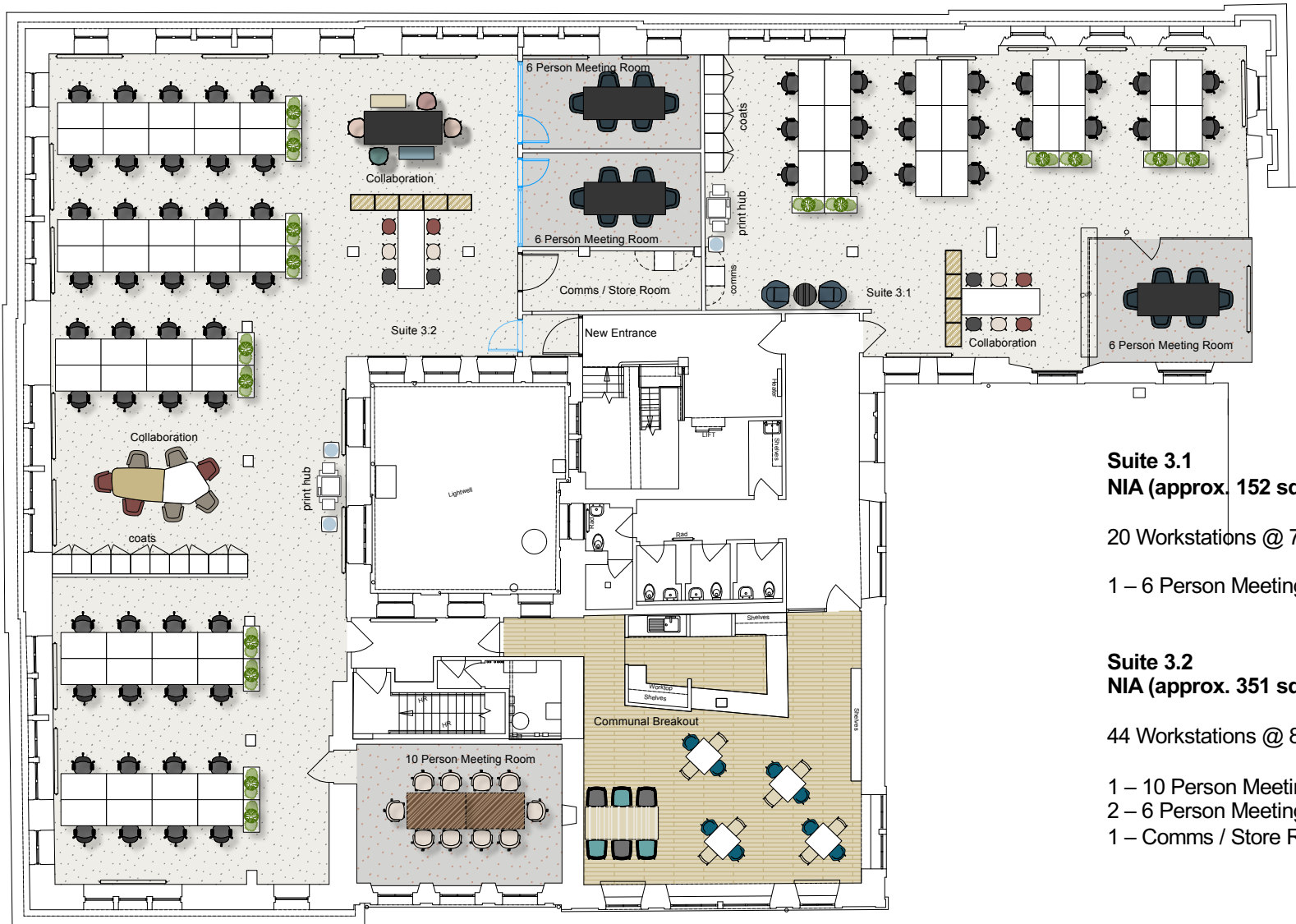


c2:concepts  
 Considered, creative.

[www.c2concepts.co.uk](http://www.c2concepts.co.uk)



## **Third Floor Split with Second Floor Full Floorplate**



**Suite 3.1**  
**NIA (approx. 152 sqm / 1,638 sq ft)**

20 Workstations @ 7.6 sqm per person

1 – 6 Person Meeting Room

**Suite 3.2**  
**NIA (approx. 351 sqm / 3,782 sq ft)**

44 Workstations @ 8.0 sqm per person

1 – 10 Person Meeting Room

2 – 6 Person Meeting Room

1 – Comms / Store Room

## Third Floor Split Floorplate

SK-AL(70)3-01



c2:concepts  
 Considered, creative.

[www.c2concepts.co.uk](http://www.c2concepts.co.uk)



**Full Floorplate**  
**NIA (approx. 579 sqm / 6,234 sq ft)**

64 Workstations @ 9 sqm per person

- 1 – 16 Person Meeting Room
- 1 – 10 Person Meeting Room
- 1 – 4 Person Meeting Room
- 1 – 2 Person Meeting Room
- 1 – Comms / Store Room
- 1 – Breakout

## Second Floor

### Full Floorplate

SK-AL(70)2-04



c2:concepts  
 Considered, creative.

[www.c2concepts.co.uk](http://www.c2concepts.co.uk)



Copyright reserved: The drawings and information in this document may only be used for the client and location specified in the title. All drawings and specifications related to this project are copyright of c2:concepts Ltd and may not in whole or part, be copied, distributed, reproduced, disclosed to any other third party without written consent from c2:concepts Ltd, or used for any other purpose than that agreed with c2 concepts Ltd, or used in any capacity by any third party without permission of c2 concepts Ltd. All parts of the drawings and documents referred to within this notice are covered by the Copyright, Designs and Patents Act 1988 and are owned in totality by c2 concepts Ltd.

**Glasgow office:**

c2:concepts  
Queens House  
29 St Vincent Place  
Glasgow  
G1 2DT

0141 221 9229

**London office:**

c2:concepts  
Henry Wood House  
2 Riding House Street  
London  
W1W 7FA

0203 011 1984

**c2:concepts**

Considered, creative.