

## Office To Let

700 sq ft

### Unit 6 Glenthorne Mews, Hammersmith, London, W6 OLJ

Impressive Private Studio/Office spaces in the heart of W6.

- Impressive self-contained offices
- Geuinely discreet and creative environment
- Architectutally striking mews development
- Excellent internal fit-out
- Three independent office zones
- Super Central Hammersmith location



## Unit 6 Glenthorne Mews, Hammersmith, London, W6 0LJ

### Summary

- Lease: New Lease

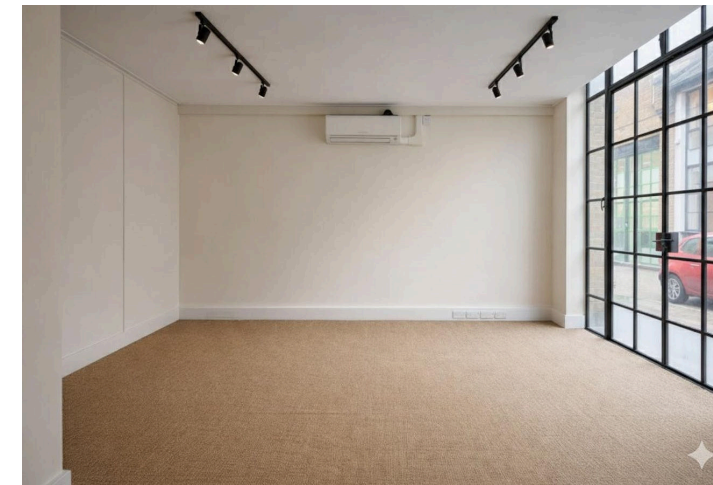
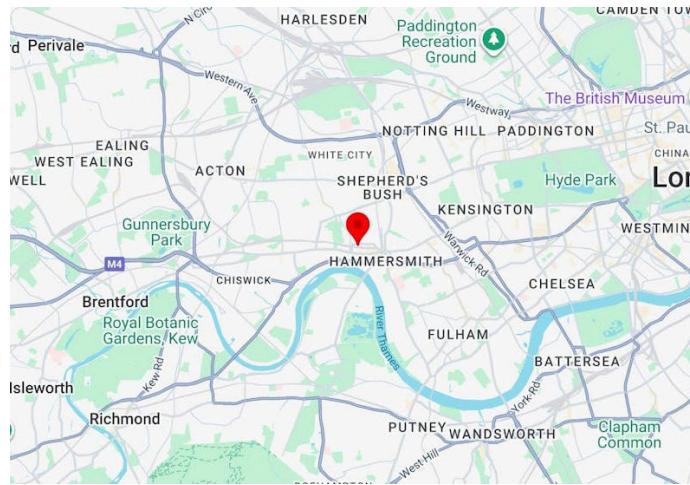
### Further information

- [View Microsite](#)

### Contact & Viewings

Alex Ogilvie  
07414 281406  
alex@meridiancp.co.uk

Adam Stackhouse  
07889 510036  
adam@meridiancp.co.uk



### Description

These recently refurbished offices now offer 'best in class' self-contained premises for an active sales operation or design-led creative business. Carved out to occupy the entire Ground Floor of this former Victorian bakery, Unit 6 Glenthorne Mews enjoys exemplary natural light to the front elevation by virtue of its full height glazed frontage, an interesting period facade and a set of office spaces that offer enormous flexibility. The property also benefits from being fully self-contained with a fitted kitchen, separate W.C's and parking available by separate negotiation

### Location

Located to the south of Glenthorne Road, close to the junction with Galena Road in Ravenscourt Park, Hammersmith. Ravenscourt Park (District Line) Underground station is less than a 4 minute walk away and Hammersmith Broadway is 7 minutes' walk. At Hammersmith Broadway Underground stations there are connections to the Piccadilly, District, Circle and Hammersmith & City Lines. From Hammersmith, the Piccadilly Line provides direct access to Heathrow Airport. Local road connections include the A4/M4 with access to the West End (6 miles) Heathrow Airport and the M25. There are a number of bars and pubs within walking distance, such as the Stonemasons Arms gastro pub together with the many shops, banks and restaurants on King

