



WATERHOUSE

41 SPRING GARDENS

BEAUTIFULLY REFURBISHED GRADE A OFFICES

STYLE GRANDEUR & HERITAGE



Waterhouse is a Grade II listed building, designed and built in 1890 by Alfred Waterhouse who also designed a number of notable Manchester landmarks including major commissions for Manchester University, National & Provincial Bank, the Refuge and Prudential Assurance and the splendid Gothic Manchester Town Hall.





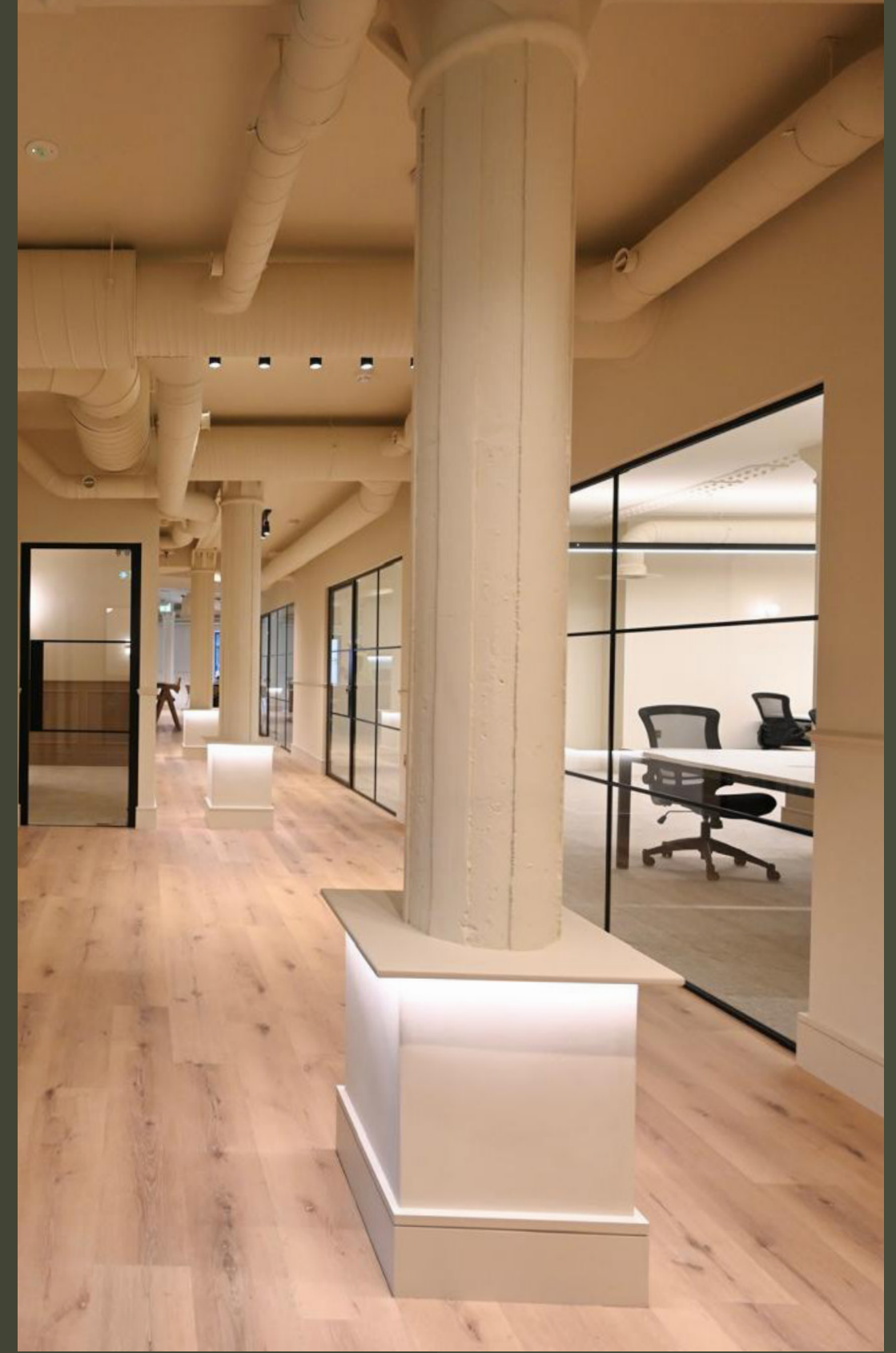
EXPECT EXCEPTIONAL

DEFINED BY DETAIL



The attention to detail of the original design has been celebrated in the refurbishment retaining original features, and enhancing these with contemporary design cues that have created a beautifully crafted and inspiring working environment.







TASTEFULLY DONE

Waterhouse is located at the junction of Spring Gardens surrounded by other architectural gems that are home to venues including Grand Pacific, Cibo, Browns and The Gotham. These are some of Manchester's most impressive venues right on the doorstep.

CIBO

BROWNS

GRAND
PACIFIC

Waterhouse's prime location in the heart of Manchester offers unparalleled convenience, with all essential amenities just a stone's throw away. Whether it's shopping, dining, or entertainment, everything you need is right on your doorstep.

CITY CENTRAL

In addition, the property is ideally positioned for excellent transport links, with three tram stops just a two-minute walk away, providing quick and easy access to the city's extensive tram network. For those who prefer to travel by train, three major train stations are within a ten-minute walk, ensuring effortless connections to the rest of Manchester and beyond. This central location makes Waterhouse an ideal choice for anyone seeking both convenience and connectivity in the city.



WALKING TIMES

Market Street Tram	1 MIN
Piccadilly Gardens	1 MIN
St Peter's Square	2 MINS
Manchester Piccadilly	5 MINS
Manchester Victoria	8 MINS
Manchester Oxford Rd	10 MINS



BARS & RESTAURANTS

1. Cibo
2. Browns
3. Grand Pacific
4. Honey @ Hotel Gotham
5. Moose Coffee
6. Maki Ramon
7. The Alchemist
8. Sam's Chop House
9. El Gato Negro
10. Six by Nico
11. Hampton & Voúis
12. Piccolino Caffé Grande



AMENITIES

13. Selfridges
14. AO Arena
15. ODEON Great Northern
16. Arndale Shopping centre
17. King Street Gym
18. Flight Club
19. Tesco Express, Market St.
20. King Street Townhouse

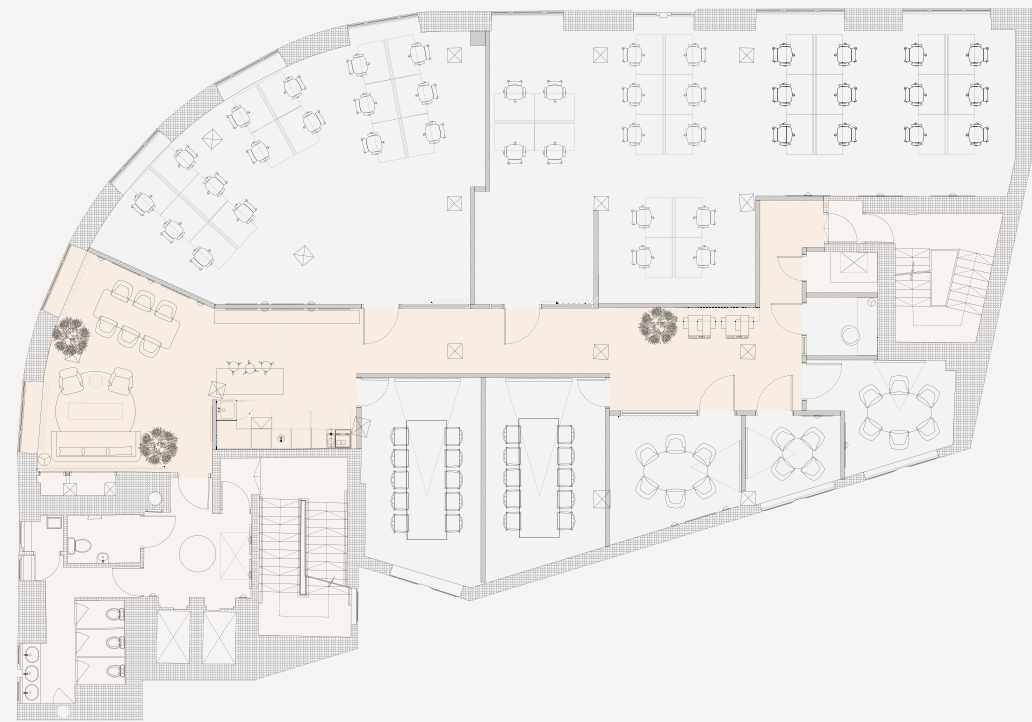


Key

- ◉ Metro
- ◉ Rail
- Bar & Restaurants
- Amenities
- Central area to show 5 minute walking radius

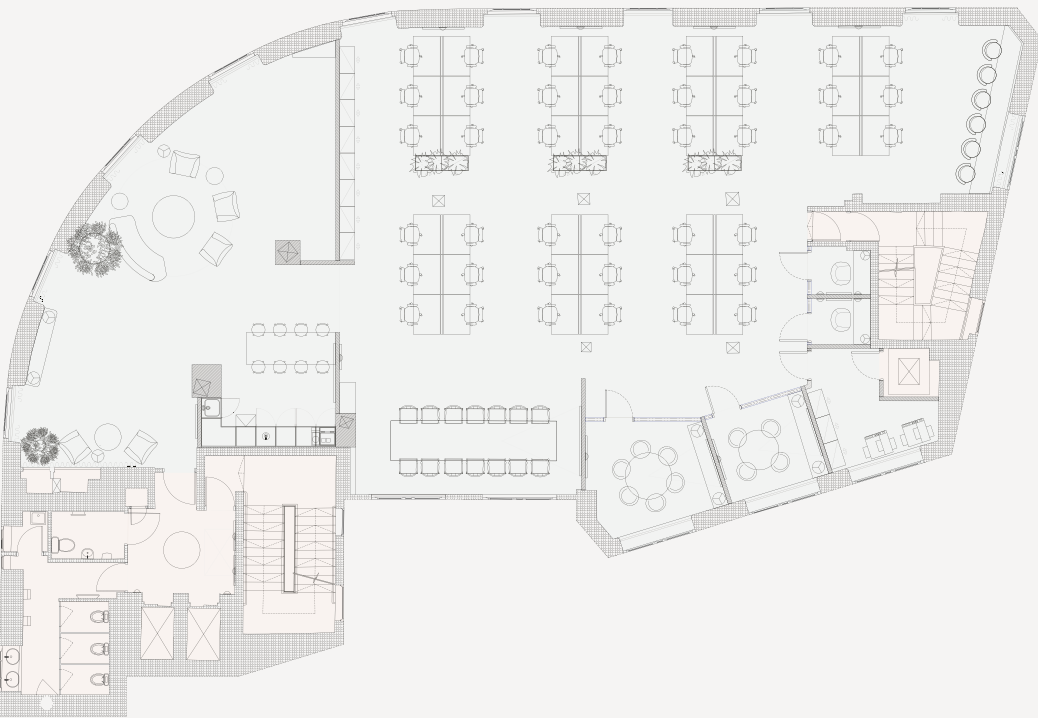
FIRST

SUITE 1 – 1,176 SQ FT / 109.4 SQ M (INC. MEETING ROOMS 1, 3 & FOCUS ROOM)
SUITE 2 – 1,608 SQ FT / 149.4 SQ M (INC. MEETING ROOMS 2, 4 & 5)



THIRD

FULL FLOOR – 3,728 SQ FT / 346.3 SQ M













FOURTH

SUITE 2 – 753 SQ FT / 70.0 SQ M
SUITE 3 – 1,009 SQ FT / 93.7 SQ M
COMMUNAL MEETING ROOM



SPECIFICATION

The boutique luxury design and specification has been carried throughout the building creating a high end business lounge, fitness studio, changing rooms and shower facilities exclusively for people working in Waterhouse.

				
SHOWERS	CYCLE STORAGE	BREAKOUT AREAS	FITNESS STUDIO	MEETING ROOMS
				
MALE & FEMALE CHANGING ROOMS	KITCHENS	LED LIGHTING	EPC RATING B	FLOOR TO CEILING WINDOWS



CONTACT



JAMES DEVANY

M: 07525 582 901

E: JAMES.DEVANY@JLL.COM

SAM CORBY

M: 07752 467 402

E: SAM.CORBY@JLL.COM

Sixteen.

ROSIE VEITCH

M: 07746 249 920

E: ROSIE@SIXTEENREALESTATE.COM

NICK NELSON

M: 07842 714 043

E: NICK@SIXTEENREALESTATE.COM

Misrepresentation act: JLL for themselves and for the vendors or lessors of this property, whose agents they are give notice that: a) all particulars are set out as general outline only for the guidance of intending purchasers or lessees, and do not comprise part of an offer or contract: b) all descriptions, dimensions, references to condition and necessary permissions for use and occupation, and other details are given in good faith and are believe to be correct but any intending purchasers or tenants should not rely on them as statements or representations of fact but must satisfy themselves by inspection or otherwise as to the correctness of each of them. C) no person in the employment of JLL has any authority to make any representation of warranty whatsoever in relation to this property. June 2025. Design and production by dsemotion.com





WATERHOUSE

41 SPRING GARDENS