

20-22 MORTIMER STREET

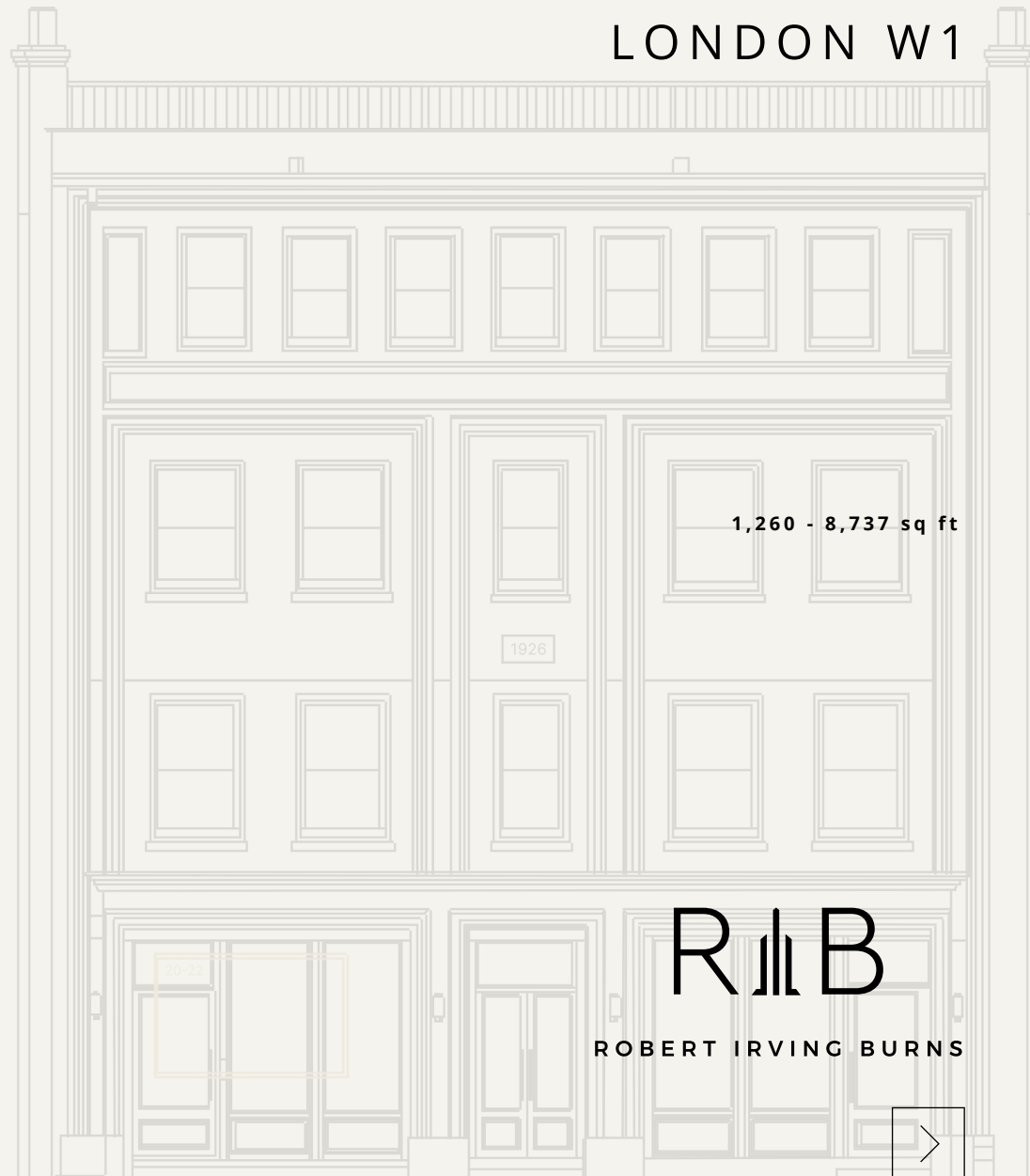
LONDON W1

A newly refurbished HQ building
in the heart of Fitzrovia.

Suitable for Office HQ, individual office
floors and separate ground floor retail operators

CROSSLAND
OTTER HUNT

20-22 MORTIMER STREET W1



1,260 - 8,737 sq ft

R I B

ROBERT IRVING BURNS

DESCRIPTION

Occupying a prominent position in the heart of Fitzrovia, 20-22 Mortimer Street is arranged over lower ground to third floors and has been comprehensively refurbished throughout.

Spanning five floors, the scheme combines 1920s period character with contemporary designer finishes and wellness-focused amenities, creating a distinctive workplace in the heart of the West End. A communal roof terrace crowns the building, providing shared outdoor space for occupiers.

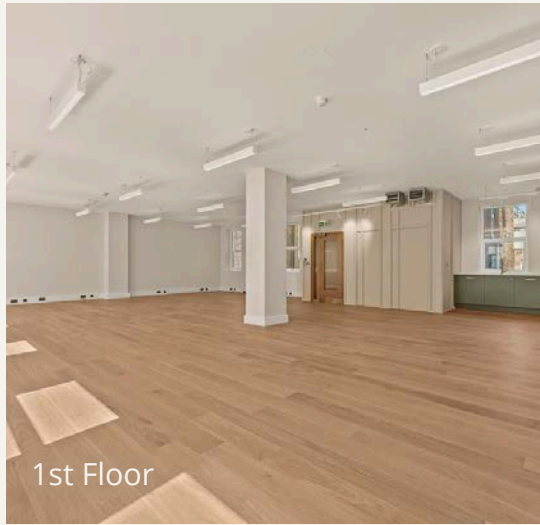
The accommodation is ideally suited to a company headquarters with ground floor showroom or operational space, while also offering the flexibility for individual office floors alongside separate ground floor retail.





Reception





1st Floor



1st Floor



2nd Floor



2nd Floor



2nd Floor

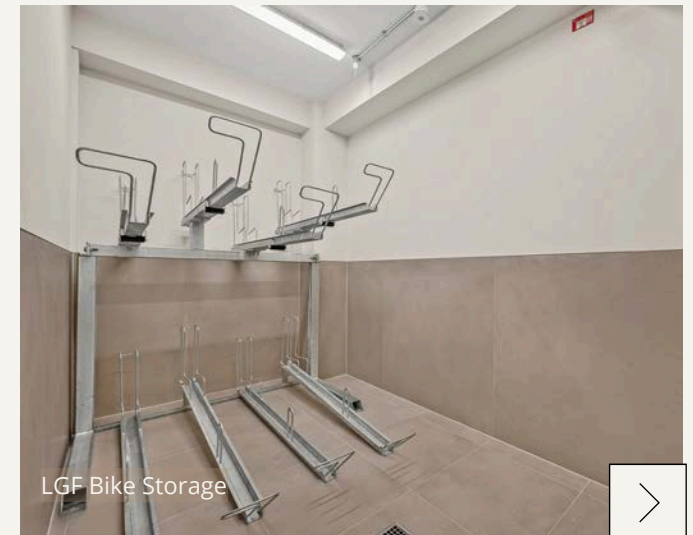
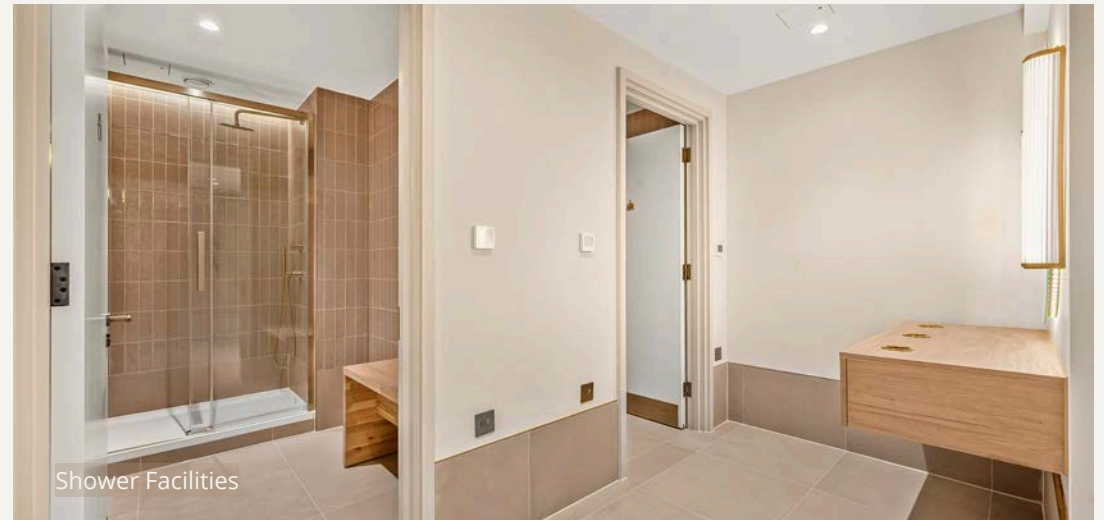


FINANCES

FLOOR	GROUND RECEPTION	GROUND & LG RETAIL	FIRST	SECOND	THIRD	TOTAL
Total Size (sq.ft.)	505	3,445	1,744	1,774	1,260	8,728
Quoting Rent (p.a.) excl.	£45,354	£251,180	£170,040	£195,140	£122,850	£784,564
Service Charge	£12,120	£42,099	£41,567	£42,359	£30,216	£126,262
Estimated Rates Payable (p.a.)	£9,759	£43,949	£39,289	£39,339	£27,765	£160,101
ESTIMATED OCCUPANCY COST EXCL. (P.A.)	£67,233	£295,129	£250,896	£276,838	£180,831	£1,070,927

AMENITIES

- CONCIERGE RECEPTION
- PASSENGER LIFT
- GOOD CEILING HEIGHTS ON ALL UPPER FLOORS
- FLOORS TO BE FITTED WITH ENGINEERED TIMBER FLOORING
- CENTRAL HEATING
- PLATE GLASS FRONTAGE -OFFERING BRANDING OPPORTUNITIES
- TWO ENTRANCES
- EXCELLENT NATURAL LIGHT ON ALL UPPER FLOORS
- COMFORT COOLING THROUGHOUT





Terrace





Common Area



3rd Floor



3rd Floor





LOCATION

LOCATED IN CENTRAL LONDON

The property is located on the north side of Mortimer Street in-between the junctions of Nassau Street and Wells Street. The property boasts a fantastic south facing position in the heart of Fitzrovia. Located opposite of Mortimer House, the area is enriched by media, fashion and financial occupiers.

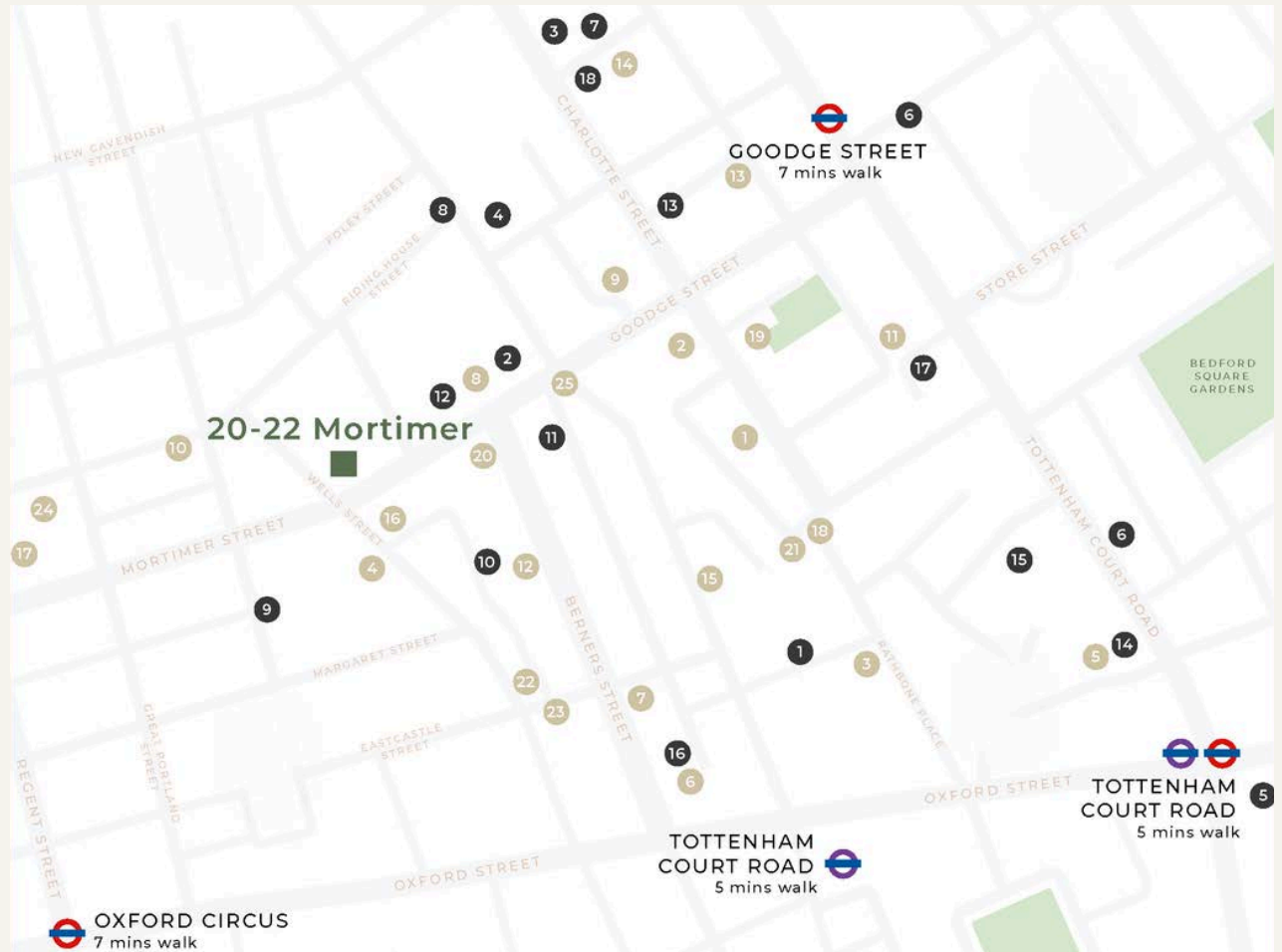
The transport links are fantastic, with the The Elizabeth Line at Tottenham Road being a 5 minute walk away. Goodge Street and Oxford Circus are also within a 7 minute walk.

20-22 MORTIMER STREET W1



THE NEIGHBOURHOOD

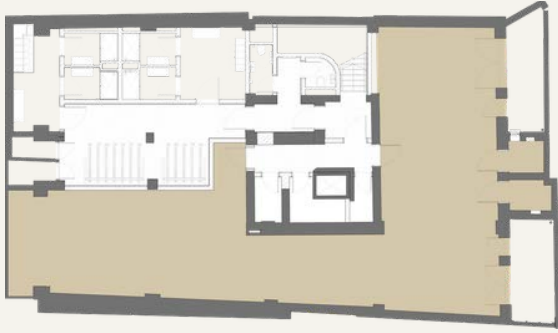
- | | |
|---------------------------|----------------------------|
| 1. Charlotte Street Hotel | 1. Facebook |
| 2. ROKA | 2. Estee Lauder |
| 3. Circolo Popolare | 3. Boston Consulting Group |
| 4. Rovi | 4. Take-Two Interactive |
| 5. Hakkasan | 5. Apollo |
| 6. Berners Tavern | 6. G-Research |
| 7. The London Edition | 7. Arup |
| 8. The Arber Garden | 8. Make Architects |
| 9. The Salt Yard | 9. Heineken |
| 10. Riding House Cafe | 10. Motorway |
| 11. Bao Fitzrovia | 11. Netflix |
| 12. Sanderson Hotel | 12. Bakkavor |
| 13. Noize | 13. Revcap |
| 14. Bubbledogs | 14. Freuds |
| 15. The Mandrake Hotel | 15. Freemantle |
| 16. Mortimer House | 16. Gamesys |
| 17. Psycle | 17. Technicolour |
| 18. Lima | 18. Perella Wienberg |
| 19. Pied a Terre | |
| 20. Flesh & Buns | |
| 21. Six by Nico | |
| 22. Kaffeine | |
| 23. Arros QD | |
| 24. The Nest | |
| 25. New Hotel | |



PROPOSED GROUND FLOOR RECEPTION



FLOOR PLANS



LOWER GROUND FLOOR | 1,636 SQFT



GROUND FLOOR | 1,776 SQFT



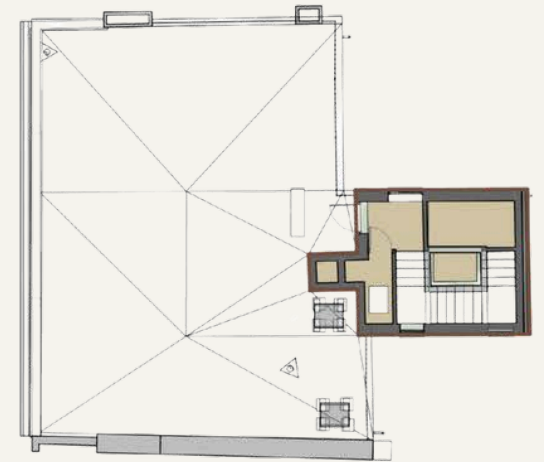
FIRST FLOOR | 1,732 SQFT



SECOND FLOOR | 1,765 SQFT



THIRD FLOOR | 1,259 SQFT



FOURTH FLOOR



FURTHER INFORMATION

LEASE

New effective Full Repairing and Insuring lease(s) contracted outside the Landlord and Tenant Act 1954 is available direct from the landlord for a term to be agreed.

POSSESSION

Available July 2026. Upon completion of legal formalities.

LEGAL COSTS

Each party is to be responsible for their own legal costs.

EPC

Available on request.

VAT

The building is elected for VAT.

FLOOR PLANS

Scaled floor plans available upon request.



CONTACT US

For further information please reach out to a member of the RIB team or our joint agents

Jim Clarke

020 7927 0631

Jim@rib.co.uk

Matthew Mullan

0207 927 0622

Matthewm@rib.co.uk

Thomas D'arcy

020 7927 0648

Thomas@rib.co.uk

Henry Bacon

0207 927 0646

Henry@rib.co.uk

Phil Frenay

020 7399 2742

Phil@coh.eu

Nick Sinclair

020 7399 2733

Nick@coh.eu

RIB

ROBERT IRVING BURNS

CROSSLAND
OTTER HUNT

Misrepresentation Act 1967.

These particulars are intended only to give a fair description of the property and do not form the basis of a contract or any part thereof. These descriptions and all other information are believed to be correct but their accuracy is in no way guaranteed.

