



FIELD & SONS

COMMERCIAL

60A Weston Street

Character Office

1,040 sq ft | 97 sq m
Unique second floor office to let

60A Weston Street
London, SE1 3QJ



60A Weston Street

Character Office

Location

Refurbished, unique office available within this period building located on Weston Street, less than 150m south of the entrance to London Bridge station on St Thomas Street next to 'The Shard'.

The ever popular Bermondsey Street with it's many restaurants and bars is only minutes away as is Borough Market to the west.

Description

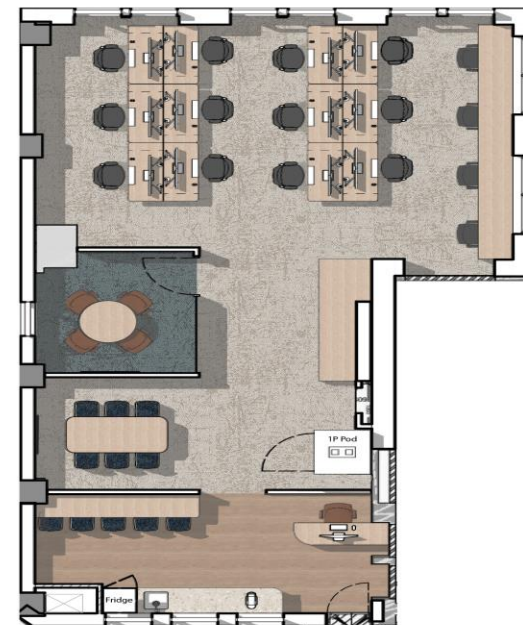
Comprises part of the second floor of this attractive Victorian former college building, with double height ceiling to the roof beams providing an open plan office with excellent natural light and retained period features.

Access is via the communal ground floor entrance with stairs and passenger lift to the upper floors.

The approximate net internal floor area is 1,040 sq ft (97 sqm).

Amenities

- Natural wood flooring
- Perimeter trunking
- Suspended linear LED lighting
- Gas central heating
- Kitchen
- W.C.s in common parts (inc. DDA)
- Shower
- Fibre connection
- Meeting rooms for hire in the building



60A Weston Street

Character Office



Tenure

New direct lease on terms by arrangement.

Rent

£39,500 per annum, exclusive of all outgoings.

Business rates

Approx. £16,000 payable for the year 2025/26 (the Rateable Value being £32,500).

Service charge

Currently approx. £8,250 per annum.

Energy performance

EPC Asset Rating = 74 (Band C)

FIELD & SONS
COMMERCIAL

Disclaimer - Field & Sons for themselves and for their clients of this property whose agents they are give notice that: 1) These particulars are set out as a general outline only for the guidance of intending purchasers/tenants and do not constitute part of any offer or contract. 2) All descriptions, dimensions, references to conditions and necessary permissions for use and occupation and other details are given without responsibility and any intending purchaser or tenant should not rely on them as statements or representations of fact but must satisfy themselves by inspection or otherwise as to the correctness of each of them. 3) No person in the employment of Field & Sons has any authority to make or give any representation or warranty whatsoever in relation to this property.

For further details, please contact:

Ben Locke or Nigel Gouldsmith

Tel: **020 7234 9639**

E-mail: com@fieldandsons.co.uk

www.fieldandsons.biz