



**Sugar  
+Style**

## **3A GREENWICH MARKET, LONDON SE10 9HZ**

### **LOCATION**

The property is comprised of a mid-terrace unit and occupies a prominent position on the northern side of Greenwich Market.

The property occupies a prominent position within Greenwich Market, and the immediate vicinity continues to grow in popularity with independent retailers, as well as high street brands including Waterstones, Pasta Evangelists, Boots, Starbucks, and M&S.

Greenwich is enjoying unprecedented visitor numbers due to its exceptional range of attractions and the subject property benefits from excellent facilities and pedestrian flow. Greenwich station & Cutty Sark DLR station are both located within 0.3 miles providing services to the City of London and Canary Wharf.

### **DESCRIPTION**

The premises comprise a retail unit within Greenwich Market. The premises benefits from good natural light, wooden flooring, spotlights, electricity (no gas), smoke detectors, security grilles, and WC facilities.

### **ACCOMMODATION**

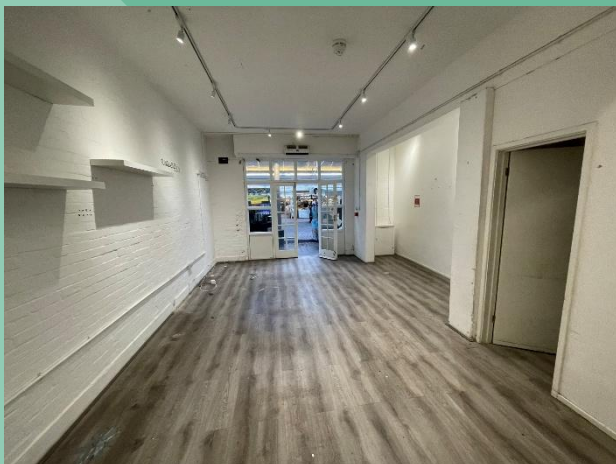
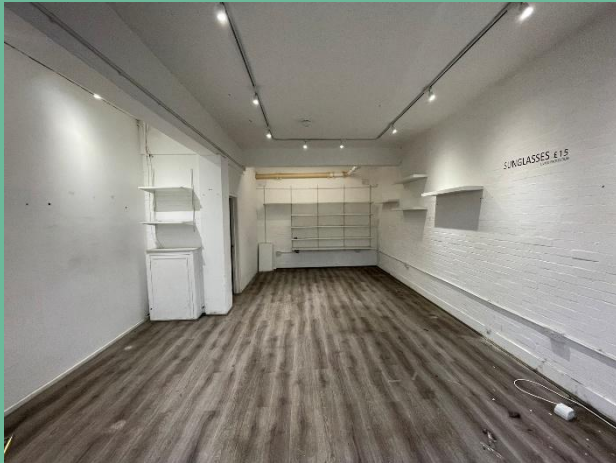
Ground Floor: 40.37 sq. m (435 sq. ft.)

### **TERMS**

The premises are available by way of a new full repairing and insuring lease for a term to be agreed, contracted outside the Landlord and Tenant Act 1954 Part II (as amended) and subject to five yearly upward only rent reviews. A minimum 6 month deposit will be held for the full duration of the term.

# **E CLASS UNIT TO LET**

**40.37 SQ. M (435 SQ. FT.)**



## PLANNING

The unit benefits from E Class Use.

## RENT

£29,000 per annum exclusive.

## SERVICE CHARGE

Details available upon request.

## BUSINESS RATES

The property has been entered into the 2023 register, with a rateable value of £17,000. This will be reducing to £16,500 from 1<sup>st</sup> April 2026.

## LEGAL COSTS

Each party is to be responsible for their own legal fees.

## EPC

The property has a c rating.

## VAT

VAT will be chargeable on the terms quoted.

## FURTHER INFORMATION

Contact sole agents Hindwoods 020 858 9303

Charlene Nicholls [c.nicholls@hindwoods.co.uk](mailto:c.nicholls@hindwoods.co.uk)



You should be aware that the Code for Leasing Business Premises strongly recommends you seek professional advice from a qualified surveyor, solicitor or licensed conveyancer before agreeing or signing a business tenancy agreement. The Code is available through professional institutions and trade associations or through website [www.leasebusinesspremises.co.uk](http://www.leasebusinesspremises.co.uk)

These particulars are believed to be correct, but their accuracy is not guaranteed and they do not constitute an offer or form any part of any contract. Hindwoods and its employees have no authority to make any representation or give any warranty in relation to this property"