

21a Noel Street

Soho, London, W1F 8GR

786 sq ft/ 73 sq m

Private workspace in a prime Soho location within a handsome building

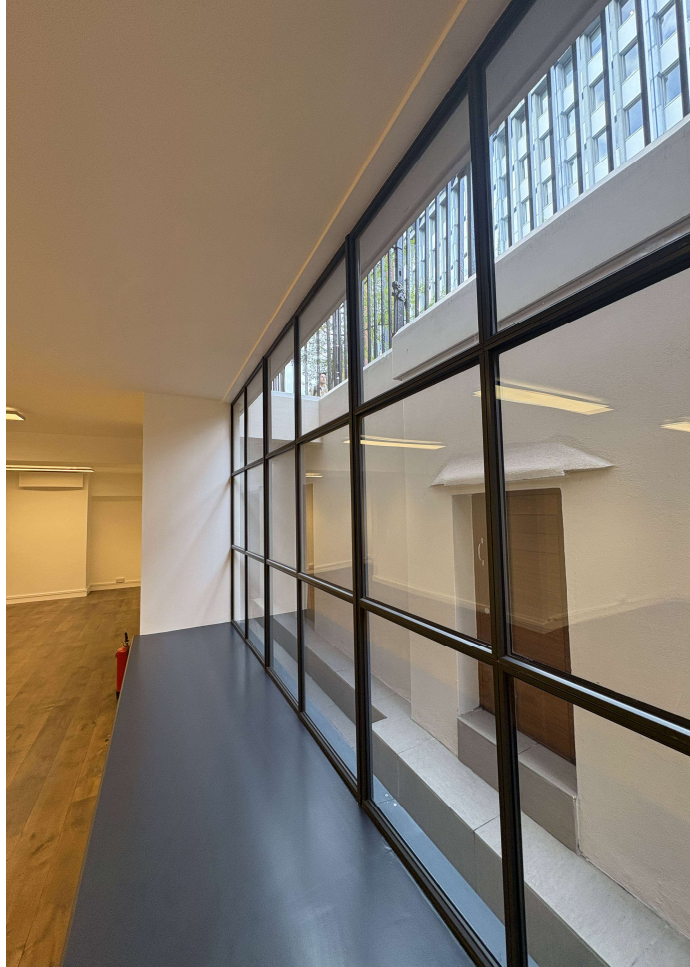
SELF-CONTAINED WORKSPACE

PASSENGER LIFT

PRIME SOHO LOCATION



STAGE



STAGE

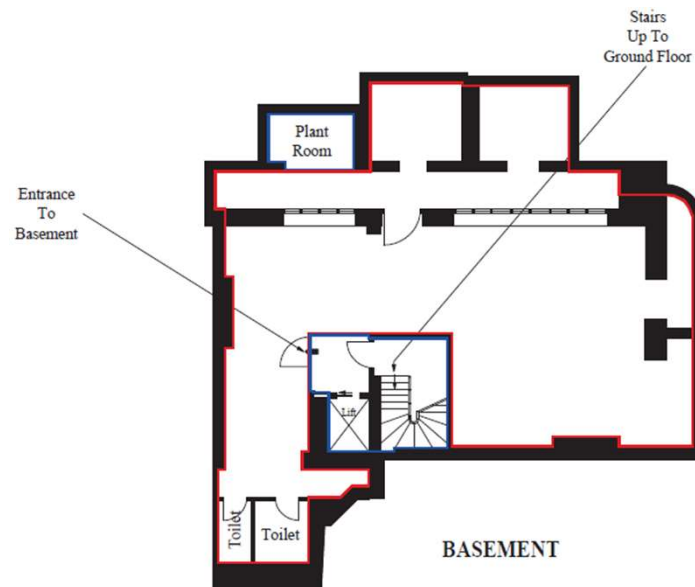


Amenities

- Self-contained workspace
- Demised WCs
- Kitchenette
- Passenger lift
- Timber flooring
- Comfort cooling system
- Crittall glazing
- Storage space (101 sq ft)
- LED Lighting
- Smart common parts



Floor Plan



Indicative only. Not to scale.

Floor Areas

Floor	Sq ft	Sq m	Workstations
L/GR	786	73	Up to 10

Location & Connectivity



[What Three Words](#)



Oxford Circus

4 mins



Tottenham Court Road

4 mins



Piccadilly Circus

7 mins

Outgoings (Per Annum)

Rent	Rates	Service Charge	Total
£55,000	£9,351	£9,306	£73,657

Term

A new lease is available direct from the landlord on terms by arrangement

Simon Lee: 07769 745449
simon@stage-re.co.uk



@stagere



@stagerelondon



@stage_re_spotlight

James Guyer: 07885 770728
james@stage-re.co.uk