



THE CORNER

Exit 6, Riyadh, Kingdom of Saudi Arabia



920000328



0537330044



arawaf@zeoof.com



www.zeoof.com

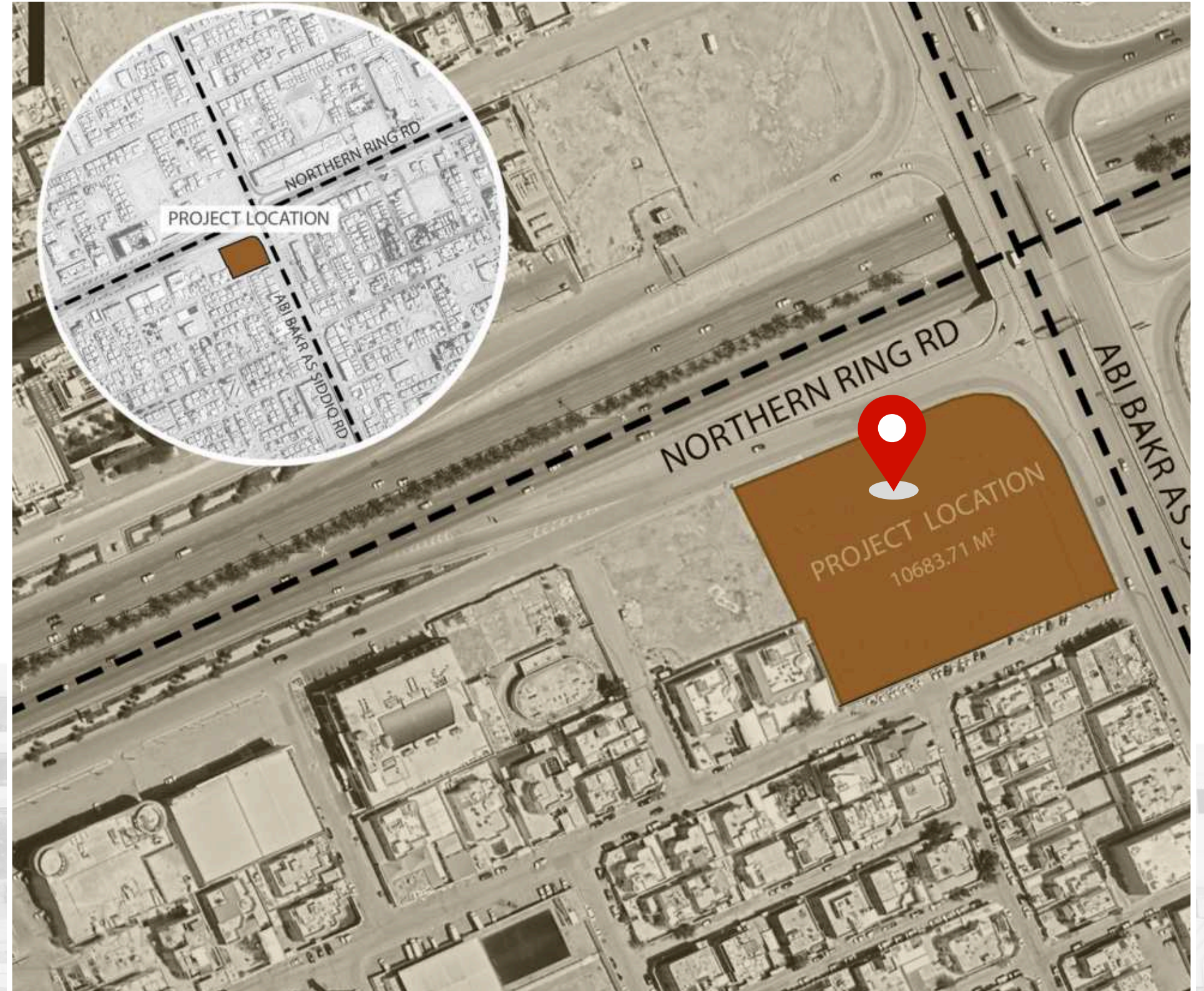


Turki Square, Riyadh, Saudi Arabia

Project Overview

The **Corner** project spans 10,683.71 square meters in Central-North Riyadh, bordered by Abi Bakr Al Siddiq Road and the Northern Ring Road, flanked by two prominent main road. It hosts a mixed-use structure, incorporating offices, dining establishments, a healthcare center, and a recreational space for visitors to relish.

Location Plan



Project Design

Project design embodies innovation, functionality, and aesthetic excellence, setting a new standard in modern architecture and urban development.









































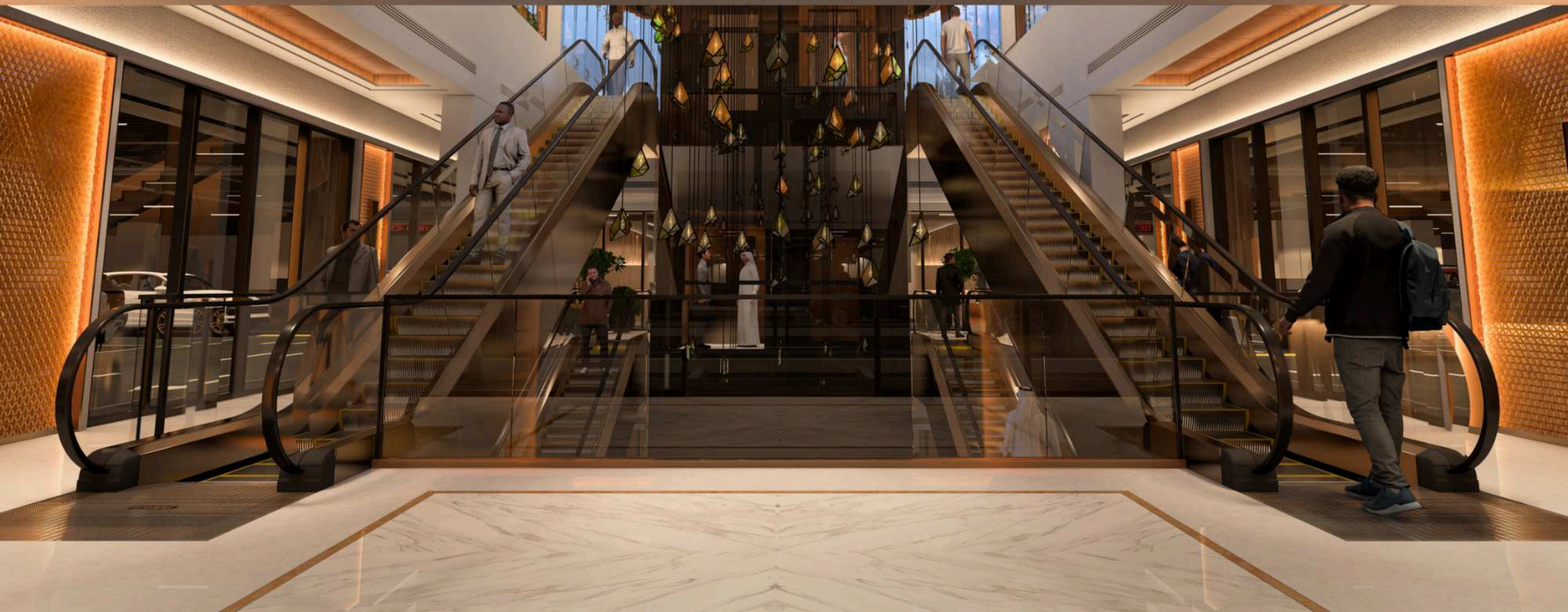
















Sakhr Zone

Center part of the Building
(To Main office Lobby)

FIRE EXIT



B3
FLOOR

2D HONEYCOMB
3D HONEYCOMB
4D HONEYCOMB
5D HONEYCOMB
6D HONEYCOMB



↑ 6

B3
FLOOR

27 - OFFICE
27 - OFFICE
27 - OFFICE RESTAURANT
27 - PARKING AREA
27 - PARKING AREA
27 - PARKING AREA

6

↑ 6

Sakhr Zone
Center part of the Building
(The Main office Lobby)

FIRE EXIT



The Corner





↑B

B3
FLOOR

1F - OFFICE
1F - OFFICE
2F - OFFICE, RESTAURANT
B1 - PARKING AREA
B2 - PARKING AREA
B3 - PARKING AREA

B

↑B

Sakhr Zone

Center part of the Building
(To Main office Lobby)

B

FIRE EXIT





FIRE EXIT



↑B



The Corner

Hjir Zone

To Medical Center



↑B





FIRE EXIT



↑ B



The Corner

Hjir Zone

To Medical Center



↑ B





Project Layout

The project consists of three basement levels for parking, while the upper levels comprise three stories, with the main floors divided between an L-shaped building, an octagonal structure, and kiosks in the middle area.

The L-shaped building features a ground floor restaurant and office spaces on the remaining two levels. The octagonal building serves as a medical center, with the central kiosk designed for versatile use.

Mention the floor under each picture



Basement 3





Basement 2







| Item | Area | Item | Area |
|---------|--------------------|---------------|--------------------|
| Shop 1 | 390 m ² | Out Door area | 67 m ² |
| Shop 2 | 256 m ² | Out Door area | 14 m ² |
| Shop 3 | 272 m ² | Out Door area | 14 m ² |
| Shop 4 | 272 m ² | Out Door area | 14 m ² |
| Shop 5 | 255 m ² | Out Door area | 14 m ² |
| Shop 6 | 270 m ² | Out Door area | 21 m ² |
| Shop 7 | 301 m ² | Out Door area | 21 m ² |
| Shop 8 | 169 m ² | Out Door area | 14 m ² |
| Shop 9 | 264 m ² | Out Door area | 14 m ² |
| Shop 10 | 250 m ² | Out Door area | 14 m ² |
| Shop 11 | 279 m ² | Out Door area | 105 m ² |
| Kiosk 1 | 79 m ² | Out Door area | 36 m ² |
| Kiosk 2 | 67 m ² | Out Door area | 18 m ² |
| Kiosk 3 | 27 m ² | Out Door area | 9.2 m ² |
| Kiosk 4 | 27 m ² | Out Door area | 9.2 m ² |

| Item | Area |
|----------------|----------------------|
| Shops | 2,978 m ² |
| Office | 273 m ² |
| Kiosk | 200 m ² |
| Medical Center | 2,042 m ² |

Ground Floor



| Item | Area | Item | Area |
|----------|----------------------|---------|-------------------|
| Office 2 | 1,992 m ² | Terrace | 34 m ² |
| Office 3 | 284 m ² | Terrace | - |
| Office 4 | 1345 m ² | Terrace | 39 m ² |

| Item | Area |
|---------------------------------|----------------------|
| Total Offices + Terrace + lobby | 3,885 m ² |

First Floor



| item | Area | item | Area |
|----------|--------------------|---------|--------------------|
| Office 5 | 916 m ² | Terrace | 319 m ² |
| Office 6 | 723 m ² | Terrace | 56 m ² |

| item | Area |
|---------------------------------|----------------------|
| Total Offices + Terrace + lobby | 2,205 m ² |

Second Floor

Project Features

The Corner is a New commercial and office center, offering a smart and efficient workspace for businesses and Life Style . A key destination for growth and innovation.



Dedicated outdoor seating for offices.



An entrance to the offices with a distinctive and exceptional design.



Chiller AC units installed on-site, along with independent electricity and water meters.



Direct street views



Compliant with quality of life standards



6 Escalator



9 elevators.



600 Car Parking



valet parking services



High-speed internet access.



24-hour security services with surveillance cameras.



cafe & Restaurant



Thank you!



920000328



0537330044



arawaf@zeoof.com



www.zeoof.com



Turki Square, Riyadh, Saudi Arabia