

**fisher  
german**

# Units 3 & 4, Haynes Point

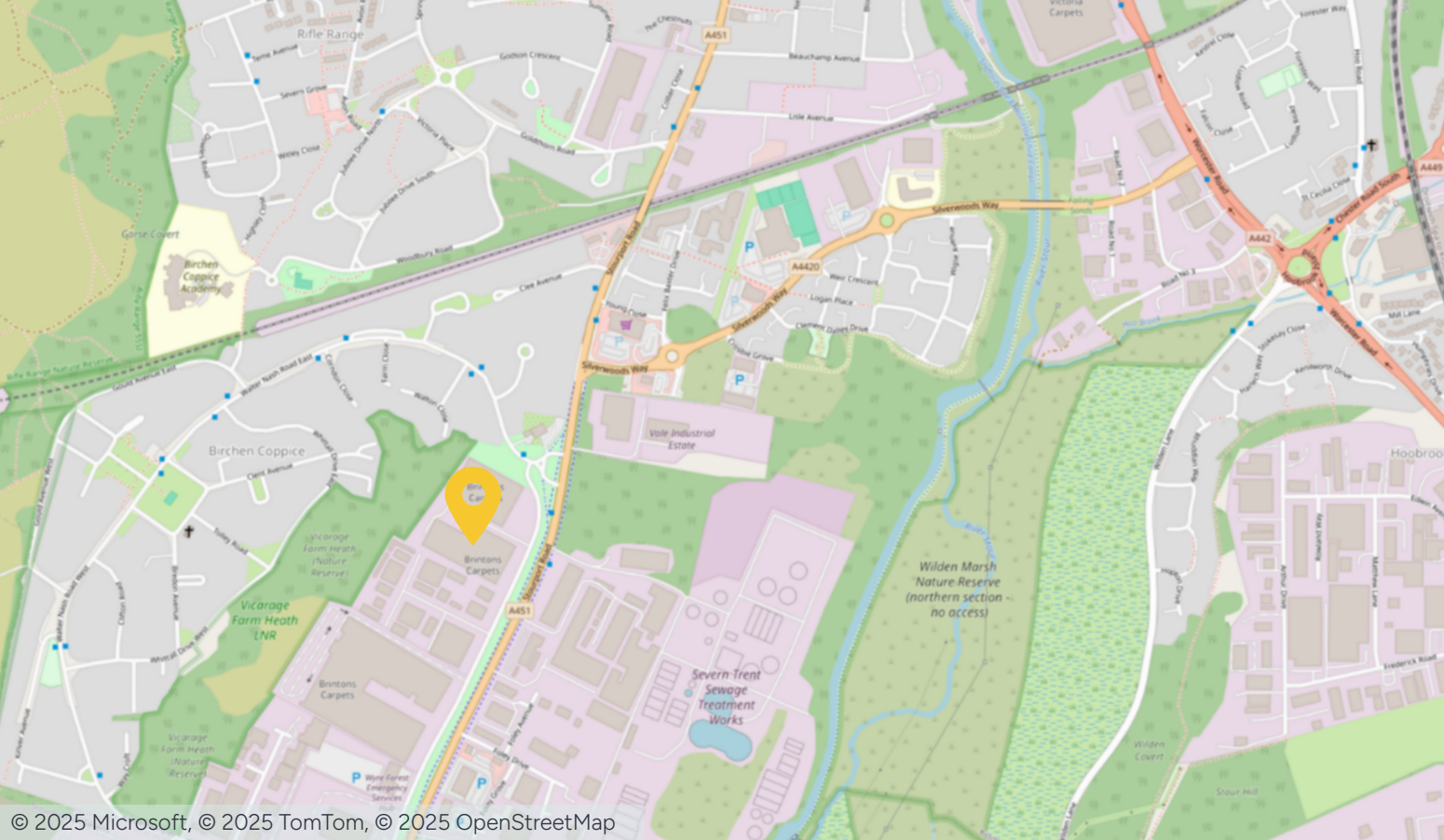
Kidderminster, DY11 7PZ

Leasehold  
Trade Counter/Industrial Units  
Prominent Roadside Location

5,620 Sq Ft (522.11 Sq M)



**To Let**



## Key information



**Eaves Height**  
5.5m



**3 Phase  
Electricity**



**Prominent  
Roadside Location**



**EPC**  
Unit 3 - B (37)  
Unit 4 - B (34)

## Units 3 & 4 Hayes Point

5,620 Sq Ft (522.11 Sq M)

### Location

Located south of the town centre, Haynes Point Trading Estate provides occupiers with unrivalled roadside presence and excellent accessibility. Fronting onto Stourport Road (A451), the arterial route into Kidderminster, the estate is well connected to local town centres with Kidderminster approximately 2.9 miles to the north, Stourport-on-Severn 2.1 miles to the south and Bewdley town centre 6.6 miles to the south west.

### Description

Units comprises of modern industrial accommodation of steel portal frame construction with profile sheet elevations. Occupiers will benefit from customer parking, LED lighting, secure 24/7 access, 3-phase electricity supply and an eaves height of 5.5m. Each unit provides a roller shutter door enabling units to be let together or separately

Units 3 & 4, Haynes Point

## Contact us

Viewings by appointment only.

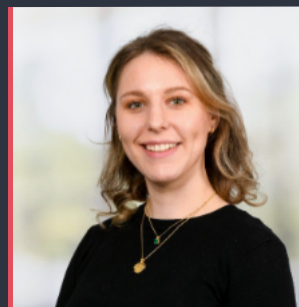
To arrange a viewing, please contact:



**Mike Price**

0121 561 7882

mike.price@fishergerman.co.uk



**Ellie Fletcher**

0121 561 7888

ellie.fletcher@fishergerman.co.uk

Please note: Fisher German LLP and its Joint Agents give notice that: 1. They have no authority to make or give any representation or warranty on any property whether on their own behalf or on behalf of their clients or otherwise. 2. They do not owe any duty of care to you and assume no responsibility for any statements, representations, warranties or otherwise made in the particulars and you should not rely on those in the particulars. 3. The particulars are produced in good faith are set out as a general guide only and do not constitute or form an offer or a contract or part thereof. 4. Any photographs, descriptions, plans, measurements, distances and any other details in the particulars are approximate estimates only taken as the property appeared at the time and should not be relied upon as factually accurate. 5. Fisher German assumes prospective purchasers/tenants have carried out inspections to satisfy themselves that the information in the particulars is correct.

Particulars dated May 2025. Photographs dated May 2025.



This brochure is fully recyclable