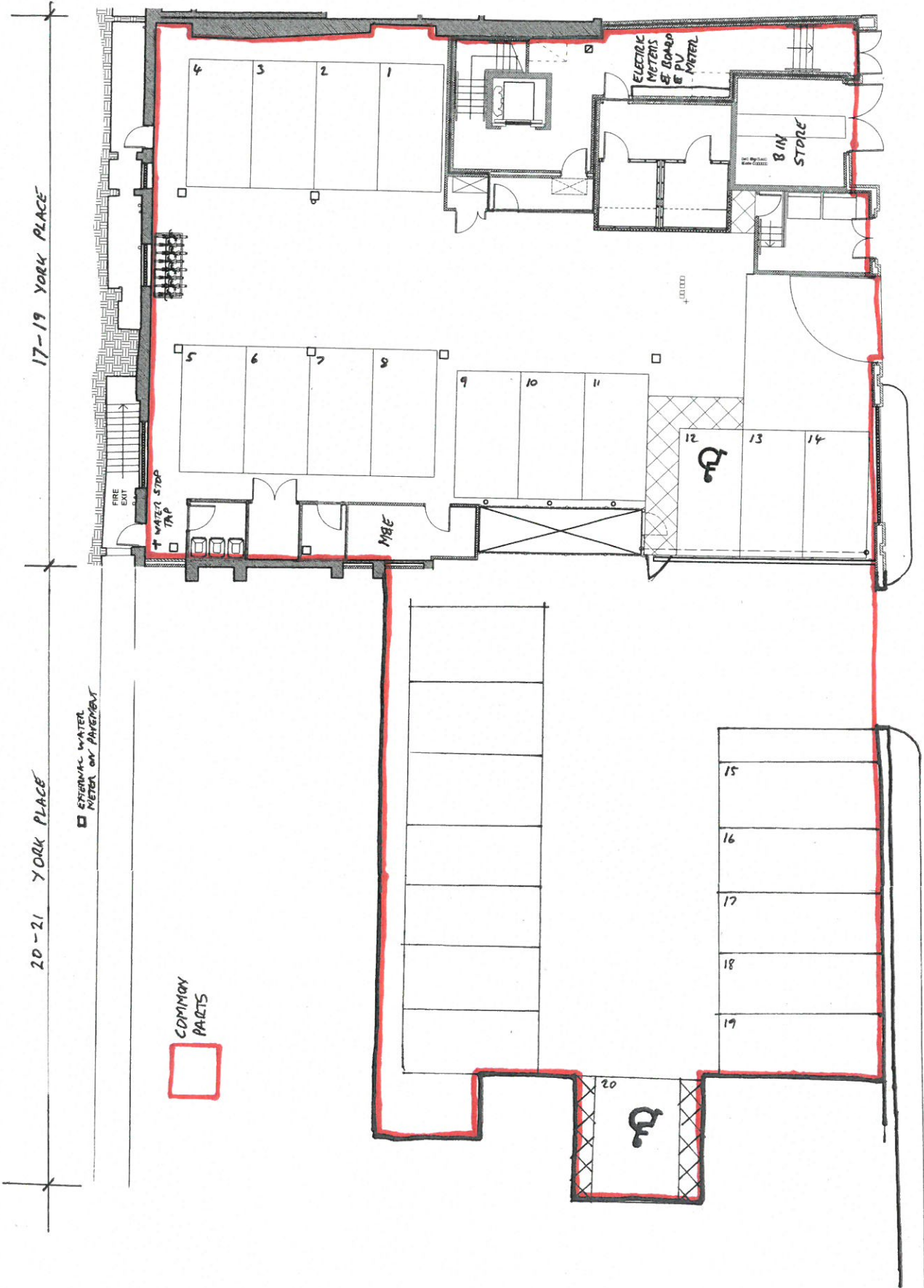


# BASEMENT



**LEGEND**

- Denotes line of 1/2" min fire comp. resisting construction
- - - Denotes line of 1/4" min fire comp. resisting construction

Note: Contractor to ensure all ex. penetrations (Dwg.) fire comp. full filled, sealed and fire stoppe

17-19 YORK PLACE

20-21 YORK PLACE

BACK YORK PLACE

COMMON PARTS

EXTERNAL WATER METER ON PAVEMENT

ELECTRIC METERS & BOILER & PV METER

BIN STORAGE

M&E

FIRE EXIT

WATER STOP

15  
16  
17  
18  
19

20

**Notes**

© 2015 Sovibrant Ltd. All rights reserved. Our drawings are for the use of the client and are not to be used for any other purpose. All dimensions must be checked on site before commencing work. No dimensions to be taken from this drawing.

**Revisions**

Rev	Date	By	Description
A	27.03.14	PP/HLN	Final Issue
B	17.05.14	PP/HLN	Approved for Construction
C	17.05.14	PP/HLN	Revised for Feasibility
D	03.06.14	PP/HLN	Updated to construction issue - DT

**GROUND FLOOR**

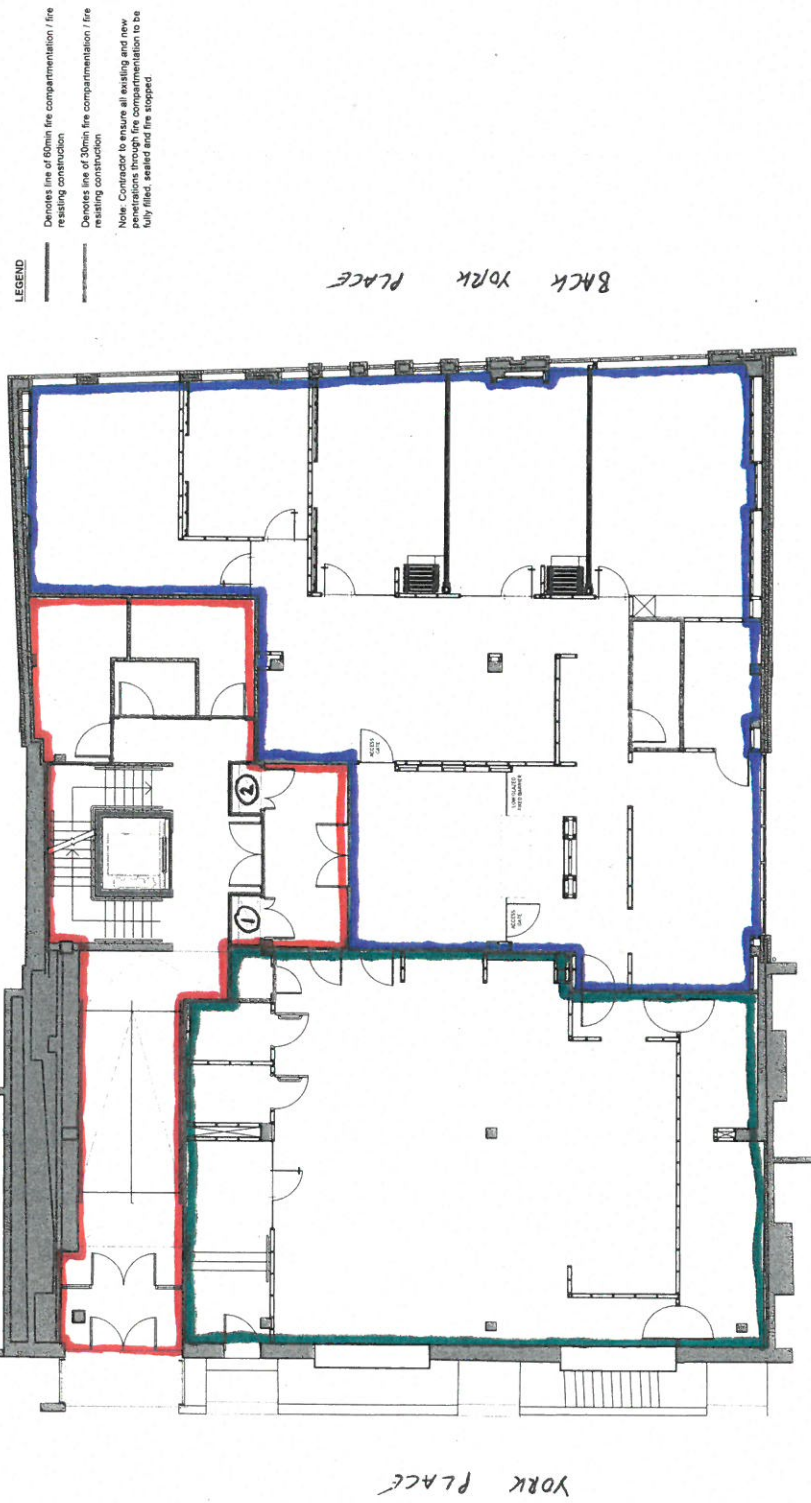
**sovibrant**  
we make change happen

LEEDS DIOCESE  
17-19 York Place  
Leeds  
LS1 2EX  
Ground Floor  
Fire Strategy

**1:100@A2**  
Drawn By / Checked By  
PP/HLN  
Drawing Number  
24802\_IN\_FS\_G01  
**E**

**CONSTRUCTION**  
**Sovibrant Ltd**  
The Innovation Centre  
Hornbeam House  
Hornbeam Park  
Harrogate  
England  
HG2 8DT

+44 (0) 1423 789 789  
www.sovibrant.co.uk  
Sovibrant Construction, 17-19 York Place, Leeds LS1 2EX



**LEGEND**

Denotes line of 60min fire compartmentation / fire resisting construction  
Denotes line of 30min fire compartmentation / fire resisting construction  
Note: Contractor to ensure all existing and new fire compartmentation to be fully filled, sealed and fire stopped.

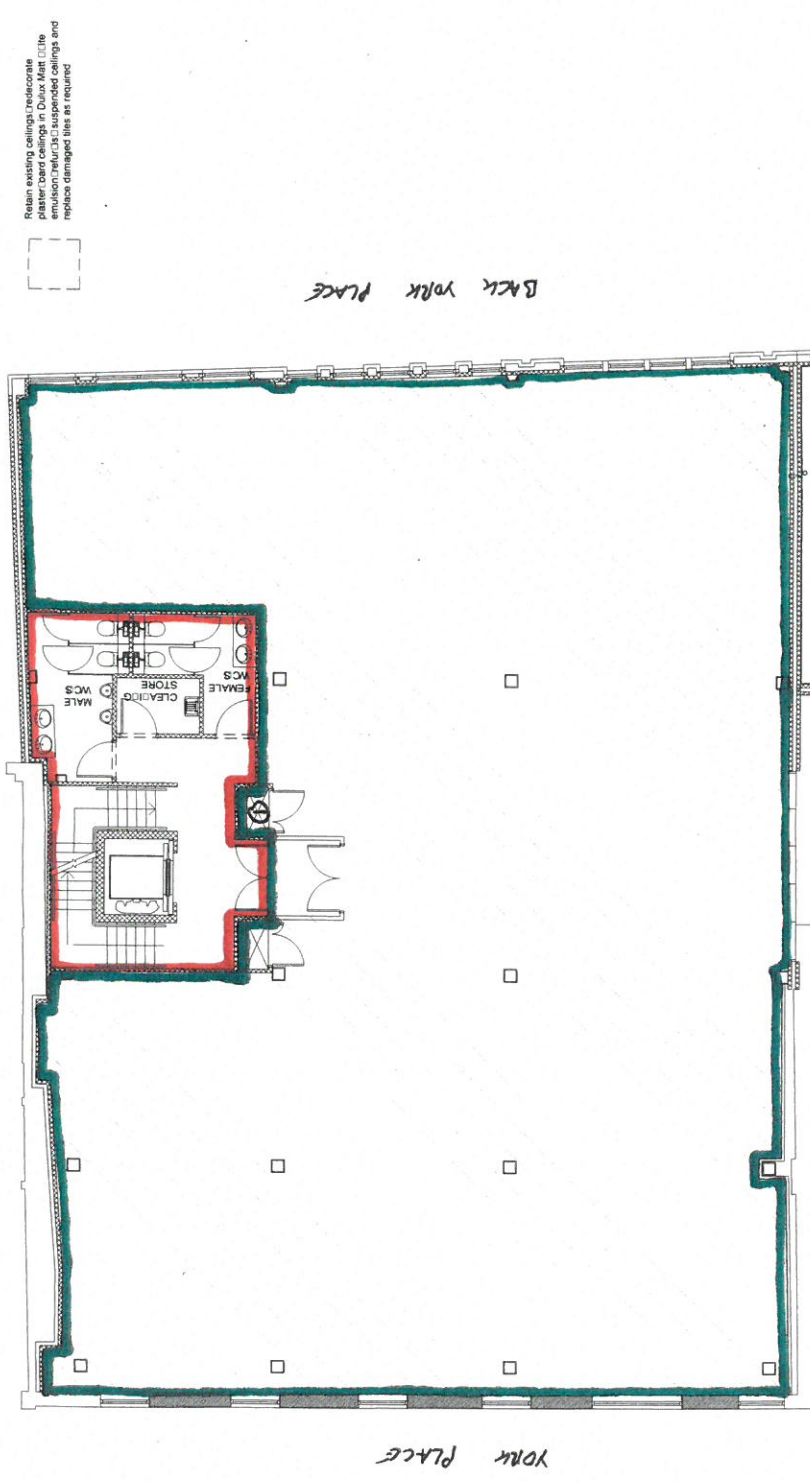
- COMMON PARTS
- L DBP
- CAFE
- ① CCTV
- ② ELECTRIC DISTRIBUTION BOARD

All dimensions must be checked on site. Before construction commences, all dimensions to be scaled in the drawing.

**Revisions**

Rev	Date	By	Description
A	11/11/20	PP	Final Issue
B	11/11/20	PP	Final Issue
C	11/11/20	PP	Final Issue
D	11/11/20	PP	Final Issue

**FIRST FLOOR**



- COMMON PARTS
- TENANTS DEMISE
- ELECTRIC DISTRIBUTION BOARD

**sovirbar**  
 Leeds Diocese  
 17-19 York Place  
 Leeds  
 LS1 2EX  
 First Floor  
 Proposed RCP

COO@A  
 Drawing Number  
 24802\_IN\_RC\_F01  
 COO@A

**SoVibrant Ltd**  
 The Innovation Centre  
 Hornbeam House  
 Hornbeam Park  
 Harrogate  
 England  
 HG1 1QT  
 so.vibrant.co.uk

**Notes**

ICI Sovibrant Limited (2015) - All rights reserved. Our terms and conditions are available on request. All dimensions must be checked on site before any work commences. No construction is to be carried out until approved.

**Revisions**

#	Date	Author	By
A	22.03.14	Travis	OT
B	24.04.14	Construction	OT
C	27.05.14	Revised to Feasibility	DT
D	02.06.14	Updated to construction stage	DT

**SECOND FLOOR**



**LEGEND**

Denotes line of 17min fire compartmentation (fire resisting construction)  
 Denotes line of 30min fire compartmentation (fire resisting construction)  
 (See) Consider to ensure all existing and new penetrations through fire compartmentation to be fully sealed and fire stopped

- COMMON PARTS
- LDBF
- Ⓢ ELECTRIC DISTRIBUTION BOARD

**sovibrant**  
we make change happen

LEEDS DIOCESE  
17-19 York Place  
Leeds  
LS1 2EX  
Second Floor  
Fire Strategy

**1:100@A2**  
Drawn By / Checked By  
PP/HLN  
Drawing Number  
24802\_IN\_FS\_S01 **D**

**CONSTRUCTION**

**Sovibrant Ltd**  
The Innovation Centre  
Hornbeam House  
Hornbeam Park  
Farrigate  
Epsom  
Surrey  
E15 2BT

+44 (0) 1423 789 388  
www.sovibrant.co.uk  
Sovibrant is an equal opportunity employer. We are an equal opportunity employer. We are an equal opportunity employer.

