

**STAGE**

12 Little Newport Street,  
Chinatown, London, WC2H 7JJ

413 sq ft / 38.37 sq m

Newly refurbished and fully fitted  
workspace available in September 2025

FULLY FURNISHED

---

FITTED KITCHENETTE

---

TIMBER FLOORING

---



[stage-re.co.uk](https://stage-re.co.uk)

**STAGE**

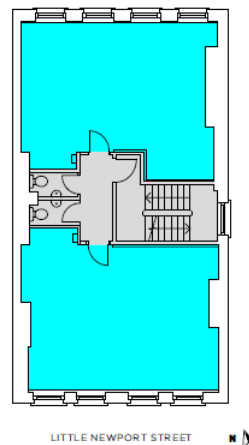


## Amenities

- x6 workstations
- Kitchenette
- Timber floors
- Comfort cooling
- Common parts WCs
- Fibre ready
- LED lighting
- EPC B

## Floor Plan

**TYPICAL FLOOR PLAN**  
805 SQ FT / 74.8 SQ M



Indicative only. Not to scale.



## Floor Areas

Floor	sq ft	sq m	Workstations
3 <sup>rd</sup>	413	38.37	6
<b>Total</b>	<b>413</b>	<b>38.37</b>	<b>6</b>

## Location & Connectivity



Leicester Square

1 mins



Piccadilly Circus

5 mins



Tottenham Court Road

7 mins

## Outgoings

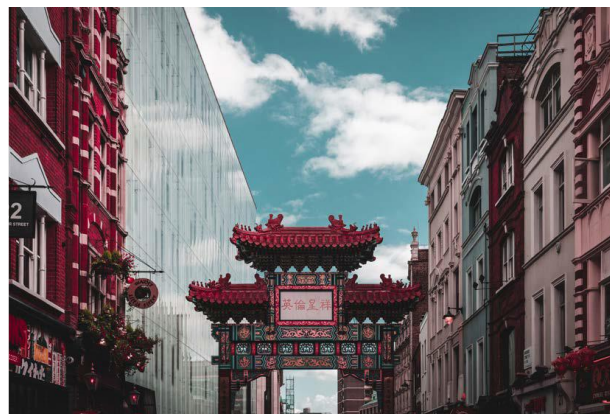
Rent: Upon Application

Business Rates: £8,483 per annum

Service Charge: TBC

## Term

A new flexible lease is available for a term of 24 months plus direct from the landlord



**Simon Lee:** 07769 745449  
simon@stage-re.co.uk

@stagere

**James Guyer:** 07885 770728  
james@stage-re.co.uk

@stagerelondon

@stage\_re\_spotlight