



# /NDURENT

ACCESS 18  
AVONMOUTH

BS11 8AZ  
///SCOUTED.DRIFTERS.DENSER

## HIGH QUALITY WAREHOUSE/LOGISTICS UNITS

UNIT 27: 53,864 SQ FT (5,004 SQ M)

Available Now

UNIT 29: 81,499 SQ FT (7,571 SQ M)

Available May 26



PV panels included  
at no extra cost,  
generating occupational  
energy savings.



Targeting BREEAM  
Excellent, placing these  
buildings in the top  
10% of UK warehouses  
for sustainability.

Warehousing that Works.



# High performance space for your business.

If you're looking for a high-performing, sustainable building that works as hard as you do, then look no further. These units are highly sustainable warehouses that will deliver benefits for your business, your people and the environment.

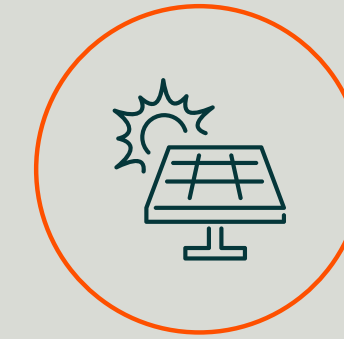
## An ideal location for the South West.

Access 18 is located on Avonmouth Way and Kings Weston Lane which provides direct access to the M5/ M49 junctions 18/18a, within 1 mile to the south. The M4/M5 interchange is approximately 7 miles to the north. Avonmouth Docks are within 2 miles of the site and Bristol City Centre is 7 miles east via the A4 Portway.

Indurent Park Access 18 is a high-quality space, with mature landscaping and water features providing an established environment for staff to work and relax on site.



Warehousing that Works.



PV panels included at no extra cost, generating occupational energy savings.



Smart LED lighting helping you reduce energy consumption by up to 75%.



10% roof lights reduce the need for additional daytime lighting and provide a light, bright environment for your employees.



BREEAM Excellent rating achieved placing this warehouse in the top 10% of warehouses in the UK for sustainability.



With an EPC A+ rating for unit 29 and EPC A on unit 27, customers can lower their energy bills.

\*data obtained using TM54 energy modelling software.





## Why choose Access 18?



7 miles to  
Bristol City Centre.



Avonmouth Docks are  
located 1.5 miles away.



Excellent connectivity to  
M5/M49 junctions 18/18a.



On prime development site, where over  
1,000,000 sq ft of new accommodation  
has already been delivered.



Warehousing that Works.





### **STRONG LOCAL LABOUR.**

490,781 people for the age range 16-64 within a 30 minute drive.



### **HIGHLY SKILLED WORKFORCE.**

Workforce can be drawn upon from the residential areas of Avonmouth, Shirehampton and Lawrence Weston within 1.3 miles.



### **WELL-CONNECTED TO LOCAL AREAS.**

Cycle paths and footways link to nearby residential areas and staff facilities, with a First Bus service running adjacent to site along Kings Weston Lane.



Source: ONS



Warehousing that Works.



# You're well-connected.

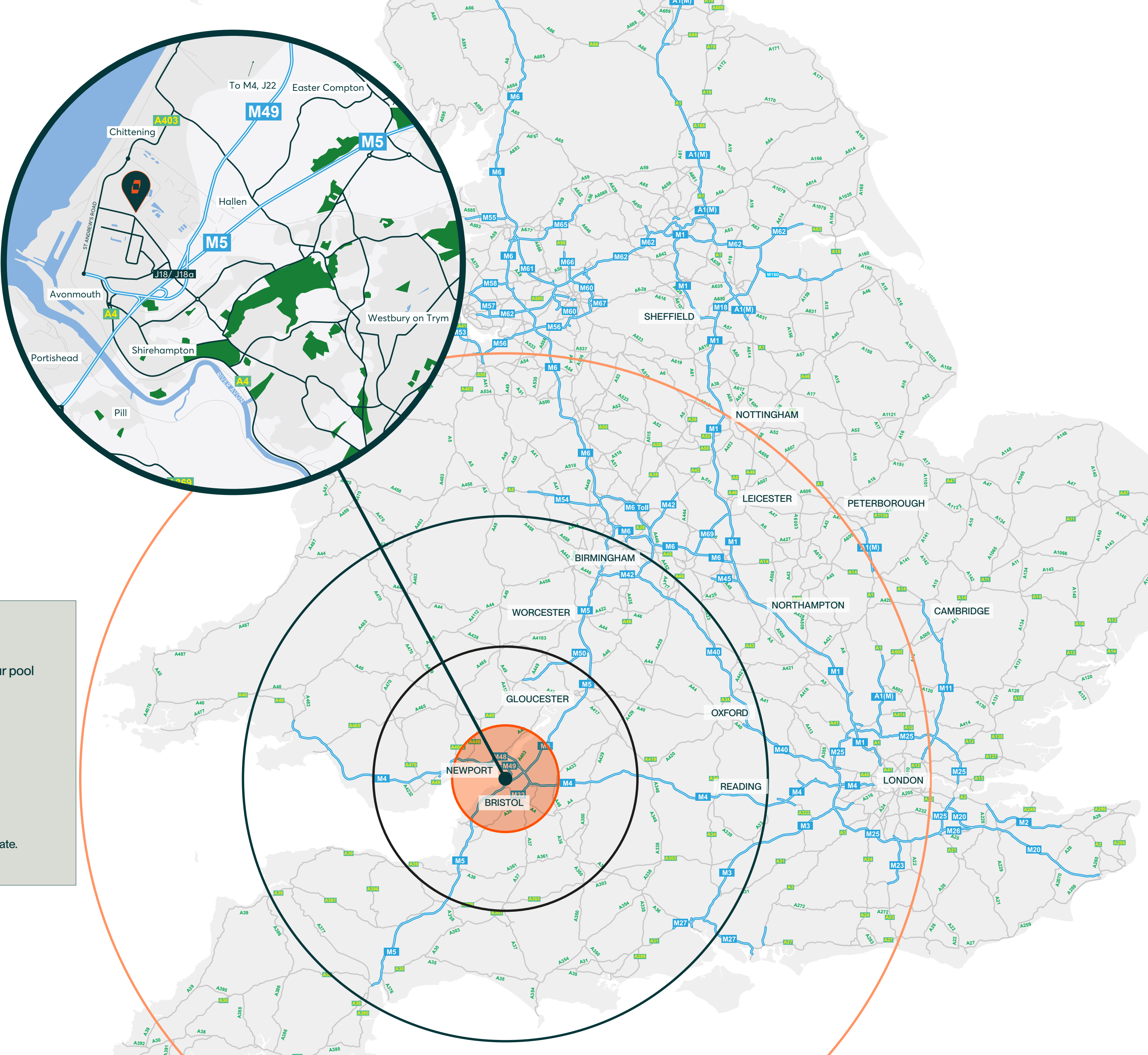
 **UNDER 1 MILE**  
from the M5/ M49 junctions 18/18a

 **1.5 MILES**  
from Avonmouth Docks

 **7 MILES**  
from Bristol City Centre

 **8 MILES**  
to the M4/M5 interchange

 **14 MILES**  
from Bristol Airport



## Drive times

-  Within 30 min labour pool
-  Within 1 hour
-  Within 2 hours
-  Within 3 hours

Source: Google maps.  
Travel distances are approximate.  
Maps not to scale.



Warehousing that Works.



# Schedule of accommodation.

	UNIT 27	UNIT 29
WAREHOUSE & GF OFFICE	49,538 SQ FT (4,602.2 SQ M)	73,149 SQ FT (6,795 SQ M)
FF OFFICE	3,014 SQ FT (280 SQ M)	2,754 SQ FT (256 SQ M)
PLANT DECK	1,312 SQ FT (122 SQ M)	3,872 SQ FT (360 SQ M)
TOTAL	53,864 SQ FT (5,004 SQ M)	81,499 SQ FT (7,571 SQ M)
CAR PARKING	47	76
YARD DEPTH	40M	50M
CLEAR INTERNAL HEIGHT	10M	12.5M
POWER	295 kVA	470 kVA

All floor areas are approximate gross internal areas and are subject to change.



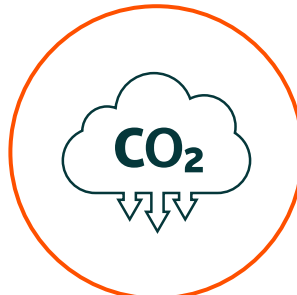
BREEAM Excellent



50 kN/SQ M  
floor loading



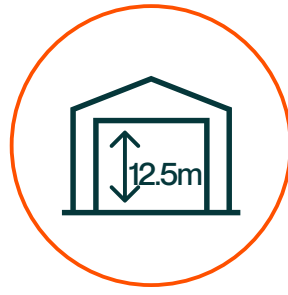
10% roof  
lights



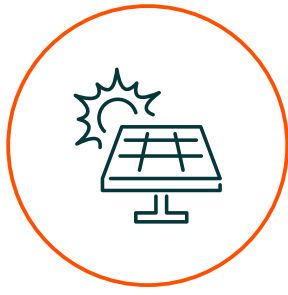
Operationally  
net zero carbon  
to unit 29



EV car  
charging



Between 10m  
and 12.5m clear  
internal height



PV panels installed  
as standard



Between 295kVA  
and 470kVA of  
power supply



Warehousing that Works.





# Units 27 & 29.



Siteplan is indicative.



Warehousing that Works.



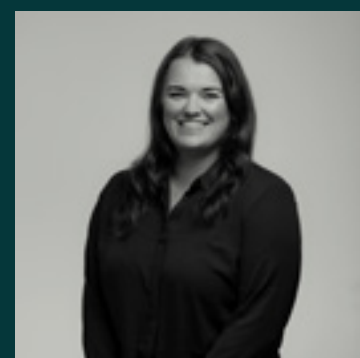


We know that people and the planet are important to you – they're important to us too.

That's why all our new buildings are built to our Indurent Standard and have sustainable features as standard, which will help you reduce operational costs whilst realising your ESG ambitions.

The sustainable nature of our buildings also means they are warm, bright spaces in which to work – which is good news for your employees and the environment.

## LET'S TALK



**CARYS ALLEN**

*Development Director*

📞 07720 070 492

✉ carys.allen@indurent.com



Warehousing that Works.





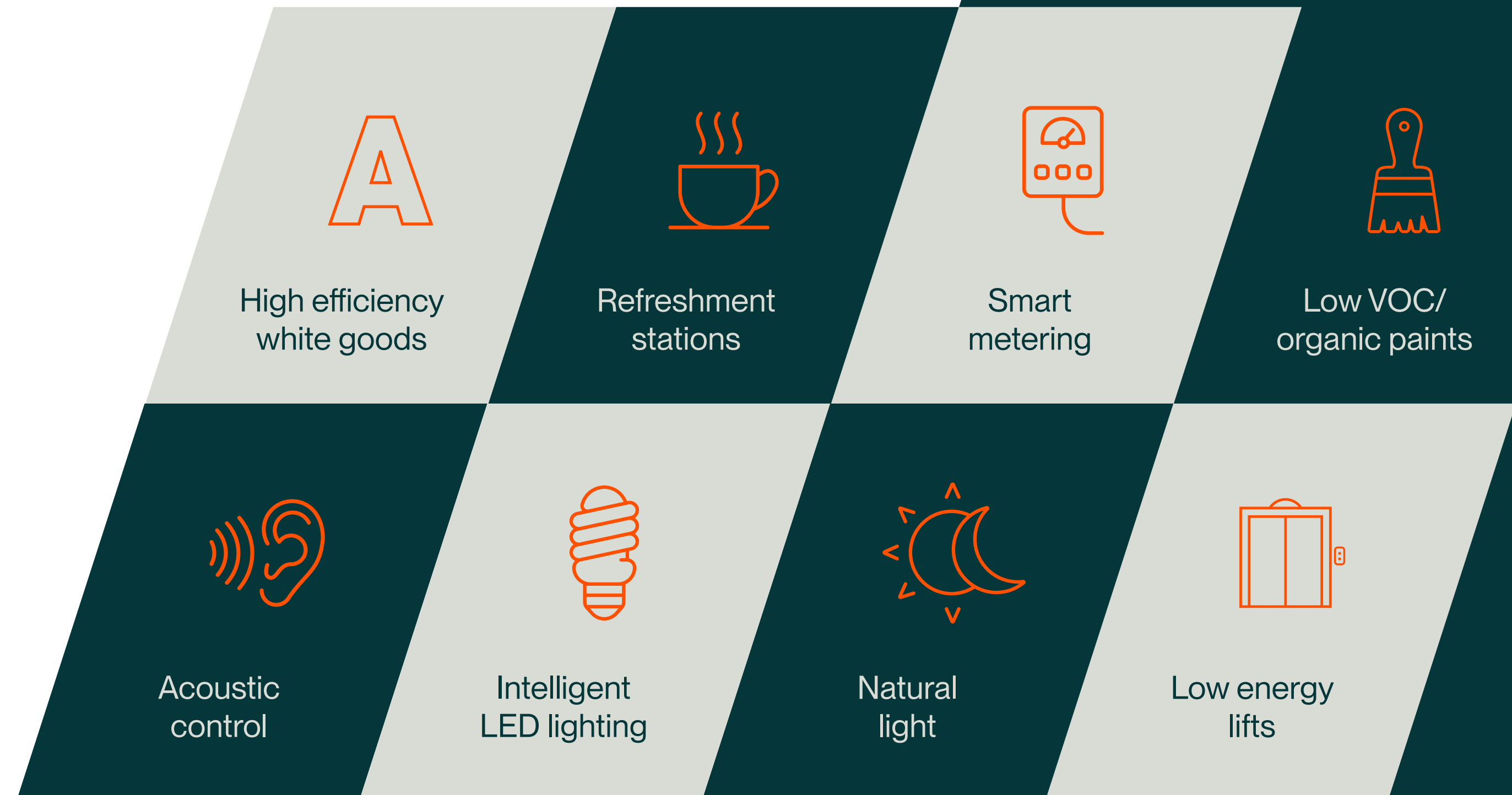
# The Indurent standard.

Indurent Parks embody our core purpose – to change places and create better futures.

The Indurent Standard delivers improved quality, sustainable and consistent developments across the Indurent portfolio that impact positively on both the environment and local communities.

Through thoughtful and considered design, we have crafted a philosophy that we believe will have positive and tangible benefits for our customers.

- 75% enhancement on building regulations for air leakage
- 30% better than current requirements for embedded carbon
- Delivered by industry leading supply chain
- Sustainable environments addressing wellbeing
- Designed for flexibility and low operational cost
- Quality materials throughout
- Operational life cycle recycling
- Flexible office space for future fitout
- Low energy use
- Net carbon zero embedded



Warehousing that Works.





# Sustainability at the core.

High quality amenity, office and warehouse specification, designed with the customer in mind, focusing on health and wellbeing, sustainability and net carbon reduction.



Warehousing that Works.





**HANNAH BRYAN-WILLIAMS**

*Senior Customer & Leasing Manager*

📞 07971 386 918

✉ hannah.bryan-williams@indurent.com



**CARYS ALLEN**

*Development Director*

📞 07720 070 492

✉ carys.allen@indurent.com



Misrepresentation Act 1967. Unfair Contract Terms 1977. The Property Misdescription Act 1991. These particulars are issued without any responsibility on the part of the agent and are not to be construed as containing any representation or fact upon which any person is entitled to rely. Neither the agent or any person in their employment has any authority to make or give any representation or warranty whatsoever in relation to the property. Images throughout are for indicative purposes only. ANTI MONEY LAUNDERING The successful lessee will be required to provide the usual information to satisfy the AML requirements when Heads of Terms are agreed. January 2026. TBDW 05701-04.



Warehousing that Works.



Chris Yates  
M: 07850 658 050  
E: chris.yates@jll.com

Sophie Parsons  
M: 07709 507 300  
E: sophie.parsons@jll.com



Russell Crofts  
T: 0117 945 8814  
M: 07990 707 723  
E: russell.crofts@knightfrank.com

Ed Rohleder  
T: 0117 945 8814  
M: 07775 115 969  
E: ed.rohleder@knightfrank.com

indurent.com

✂ @indurentUK    in @indurent    @indurentUK