

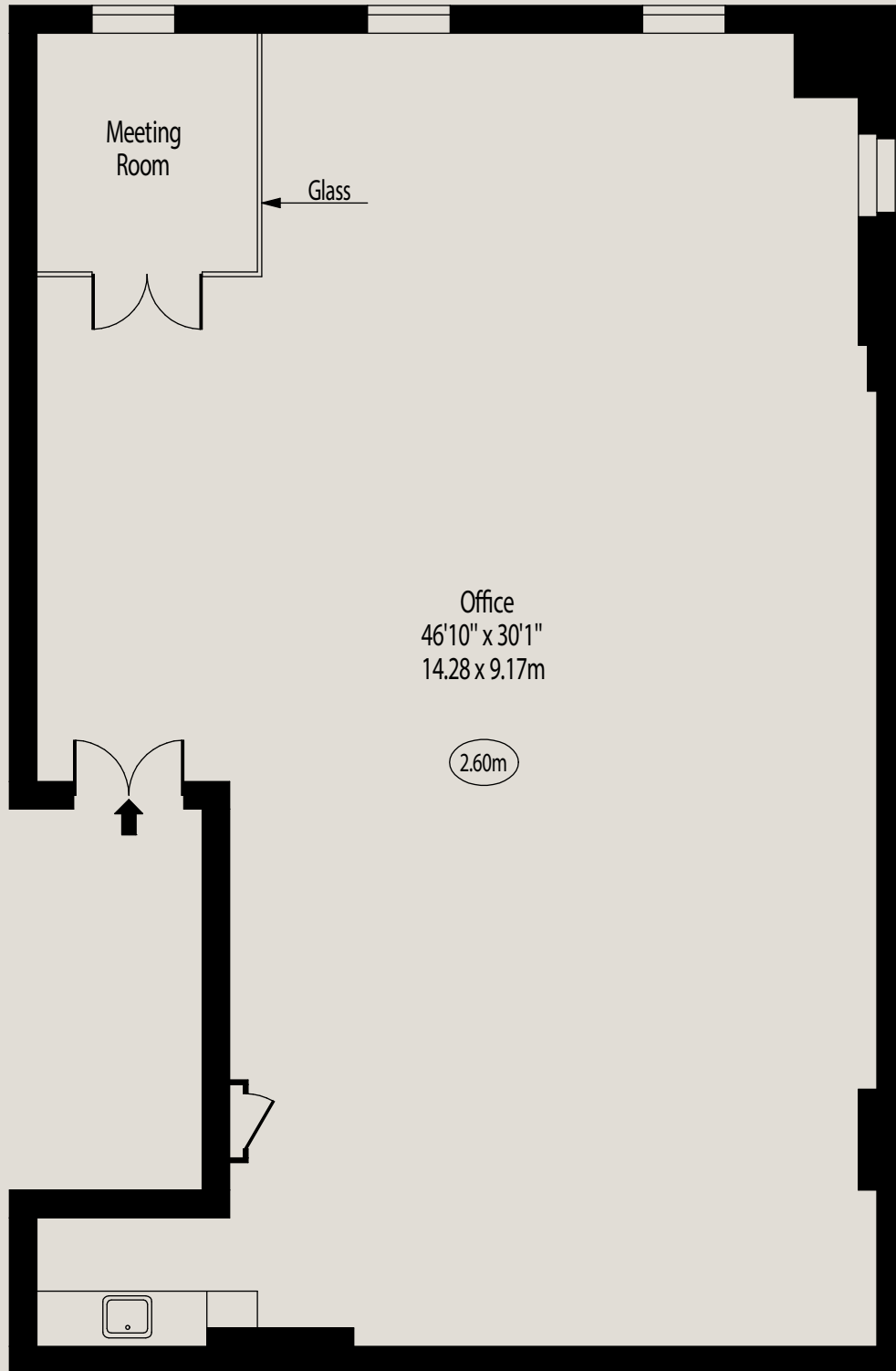
The Timber Yard,
Drysdale Street,
Shoreditch, N1 6ND

Gross Internal Area 1292 sq. feet (120.03 sq. metres)

Net Internal Area 1292 sq. feet (120.03 sq. metres)



 - Ceiling Height



Second Floor

Every attempt has been made to ensure the accuracy of the floor plan shown.
However, all measurements, fixtures, fittings, and data shown are approximate interpretations and
for illustrative purposes only. Measured according to the RICS. Not To Scale.

www.goldlens.co.uk

Ref. No. 029484WI