

Commercial Office Space

12-20 desks with a private meeting room

**Fitted & furnished offices by Farringdon Station**

# MANAGED OFFICE

**12 Greenhill Rents, Farringdon, London EC1M 6BN**



## LOCATION

The building is located on Greenhill Rents, fronting onto Charterhouse Street above the renowned Fabric Nightclub. Situated in the centre of Farringdon, there is a great selection of cafes and restaurants within the immediate vicinity. Farringdon Station is just a couple of minutes' walk.

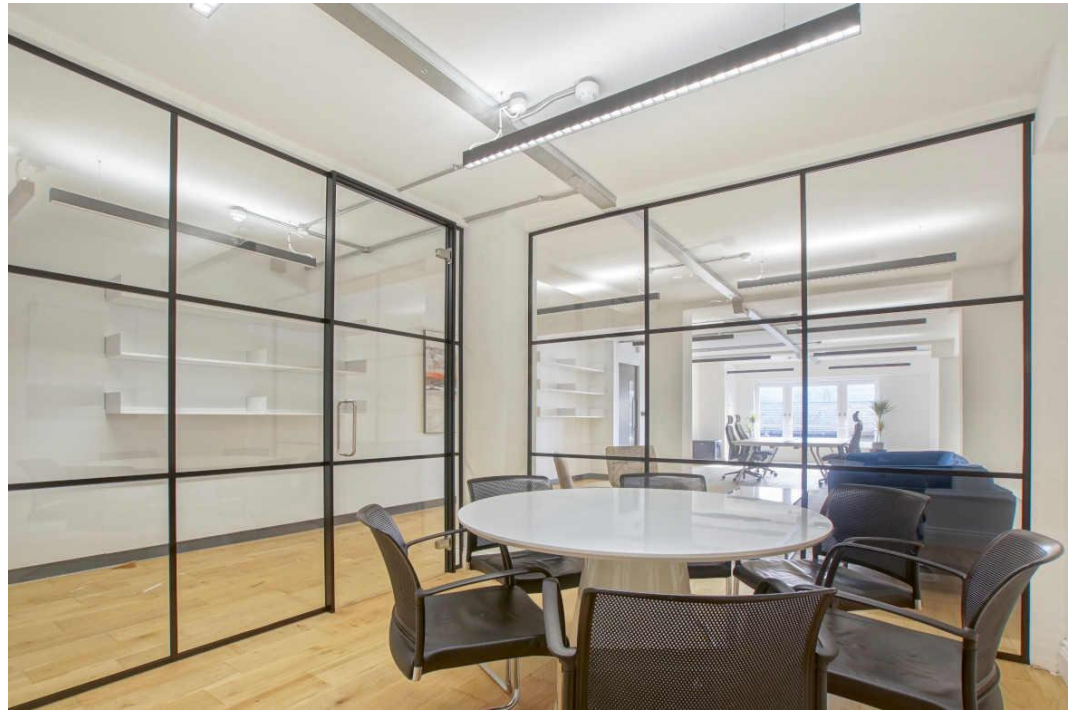
## TRANSPORT

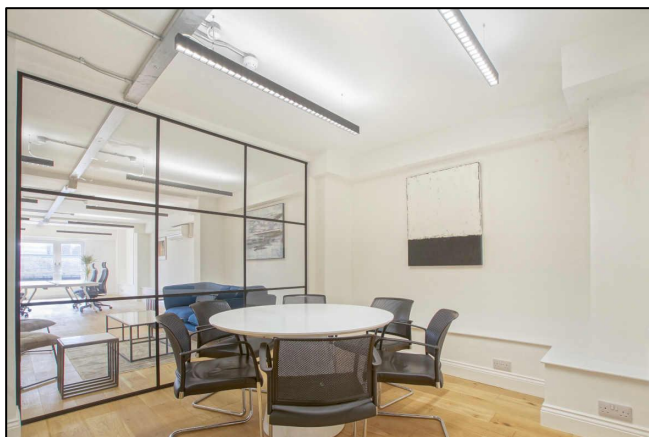
Farringdon Station (Circle, Elizabeth, Hammersmith & City and Metropolitan lines and National Rail)

Barbican Station (Circle, Hammersmith & City and Metropolitan lines)

Chancery Lane (Central line)

St. Paul's (Central line)





## DESCRIPTION

Accessed from Greenhill Rents courtyard, the building benefits from excellent natural daylight overlooking Smithfield market.

The space has been fully fitted and furnished with a private meeting room, breakout seating and desks. The spaces also benefit from communal tea points, bike racks and showers.

## AMENITIES

- Refurbished office suite
- Fitted & furnished
- Excellent natural daylight
- Modern LED lighting
- 1x meeting room
- Power & data cabling
- Fibre internet connection
- Communal tea point
- Bike racks & shower facilities
- 24 hour onsite security

Floor	Size Sq. Ft.	No. Of Desks	Total Managed Cost (includes rent, service charge, business rates & cleaning)		
			Per Sq. Ft.	Per Calendar Month	Per Annum
Third	900	12-20	£95.00	£7,125	£85,500

## LEASE

A new flexible lease is available.

## PLEASE CONTACT

ANTON PAGE 020 7336 1313

Alfie Newton  
[anewton@antonpage.com](mailto:anewton@antonpage.com)

Stephen Page  
[spage@antonpage.com](mailto:spage@antonpage.com)