

Refurbished warehouse units in North London.
5,600–33,436 sq ft available

Available Q2 2025

2-7 Centenary Road, London, Enfield, EN3 7UD

Bloom Enfield

Bloom Enfield

Newly refurbished multi-let industrial estate comprising of four units. Units can be let individually or combined on request.

The site provides the perfect opportunity for companies to be located in an established industrial agglomeration and business hub. With London's key arterial routes being the M25, A10 and A406 within direct proximity, the estate benefits from unrivalled access and transport connections.

2-7 Centenary Road, London, Enfield, **EN3 7UD**

BLOOM ENFIELD



A workplace to be proud of

Like all Bloom estates, Bloom Enfield is designed to help your operation run as seamlessly and sustainably as possible, all while creating a working environment employees can thrive in.

These units are being refurbished to combine functionality with sustainability. Accessibility to the asset is via the two-way northern and east estate road from Jeffrey’s Road with a separate southern exit point also available. The estate has enhanced parking and benefits from 12-17m yard depth to provide an operationally efficient option for businesses from various sectors. In terms of its sustainability, the asset has air source heat pumps, LED lighting and is targeting an EPC ‘A’ rating, which helps support efficient, cost-effective and sustainable operations.

Pricing is available on application.

Unit	Ground Floor Warehouse (sq ft)	Ground Floor Office (sq ft)	First Floor Office (sq ft)	Total (sq ft)
Unit 2	4,527	561	538	5,664
Unit 3	4,517	544	538	5,600
Units 4-5	8,935	1,098	1,053	11,086
Units 6-7	8,935	1,098	1,053	11,086

(Measurements are indicative and calculated approximately on a Gross External basis)



Unit 2

- 

Extensively refurbished internally and externally
- 

5-6m clear internal eaves height
- 

Up to 276 KVA across the estate
- 

LED lighting
- 

Two-way access via Jeffreys Road
- 

Air source heat pumps
- 

Enhanced parking allocation
- 

EPC A targeted
- 

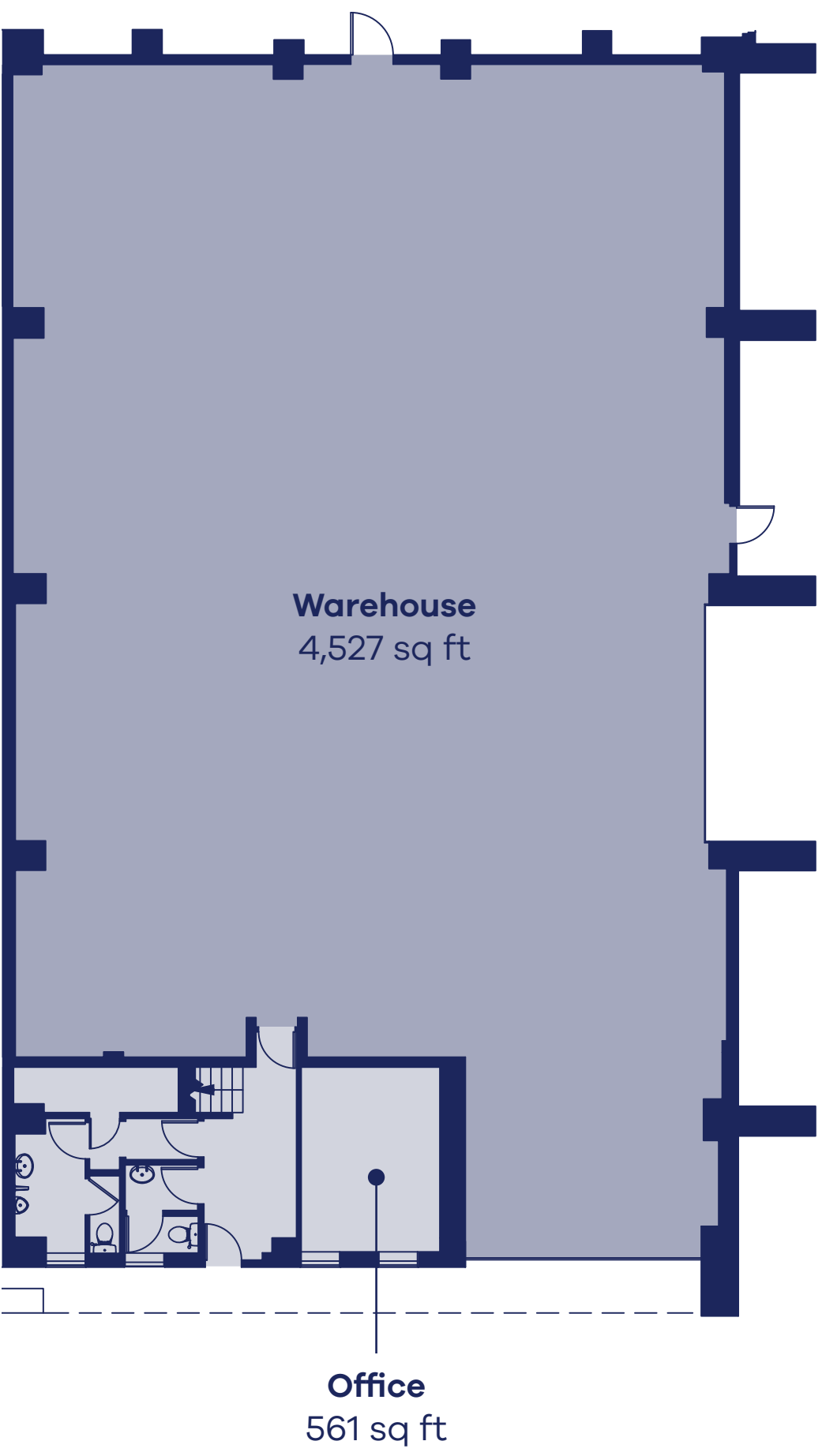
12-17m yard depth
- 

EV chargers

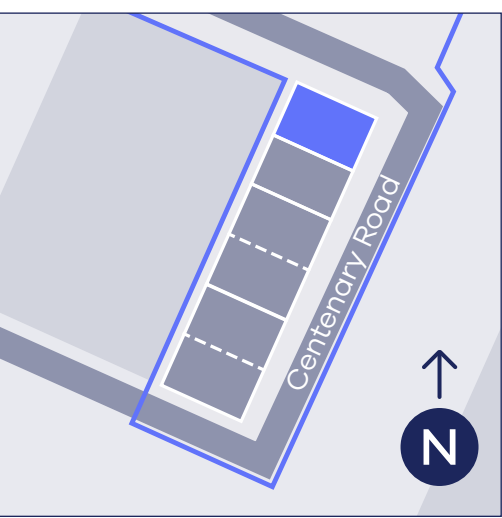


2-7 Centenary Road, London, Enfield, **EN3 7UD**

BLOOM ENFIELD



Ground Floor



First Floor

Unit 3

- 

Extensively refurbished internally and externally
- 

5-6m clear internal eaves height
- 

Up to 276 KVA across the estate
- 

LED lighting
- 

Two-way access via Jeffreys Road
- 

Air source heat pumps
- 

Enhanced parking allocation
- 

EPC A targeted
- 

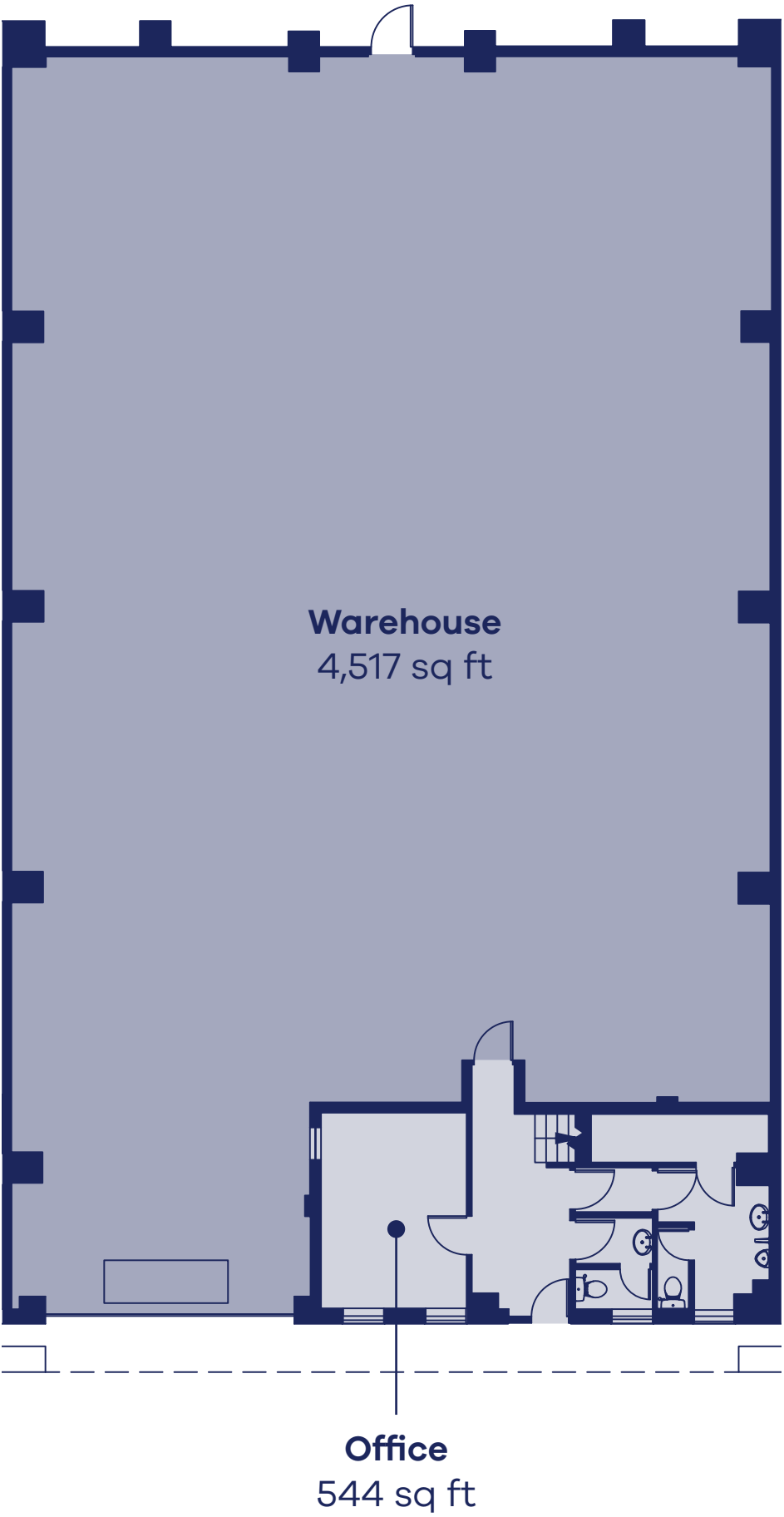
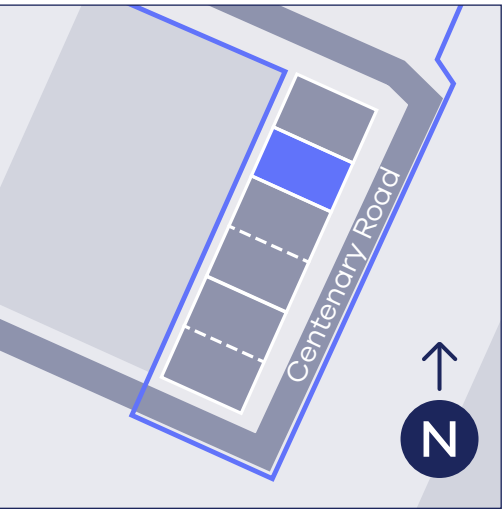
12-17m yard depth
- 

EV chargers



2-7 Centenary Road, London, Enfield, **EN3 7UD**

BLOOM ENFIELD



Ground Floor



First Floor

Units 4-5

- 

Extensively refurbished internally and externally
- 

5-6m clear internal eaves height
- 

Up to 276 KVA across the estate
- 

LED lighting
- 

Two-way access via Jeffreys Road
- 

Air source heat pumps
- 

Enhanced parking allocation
- 

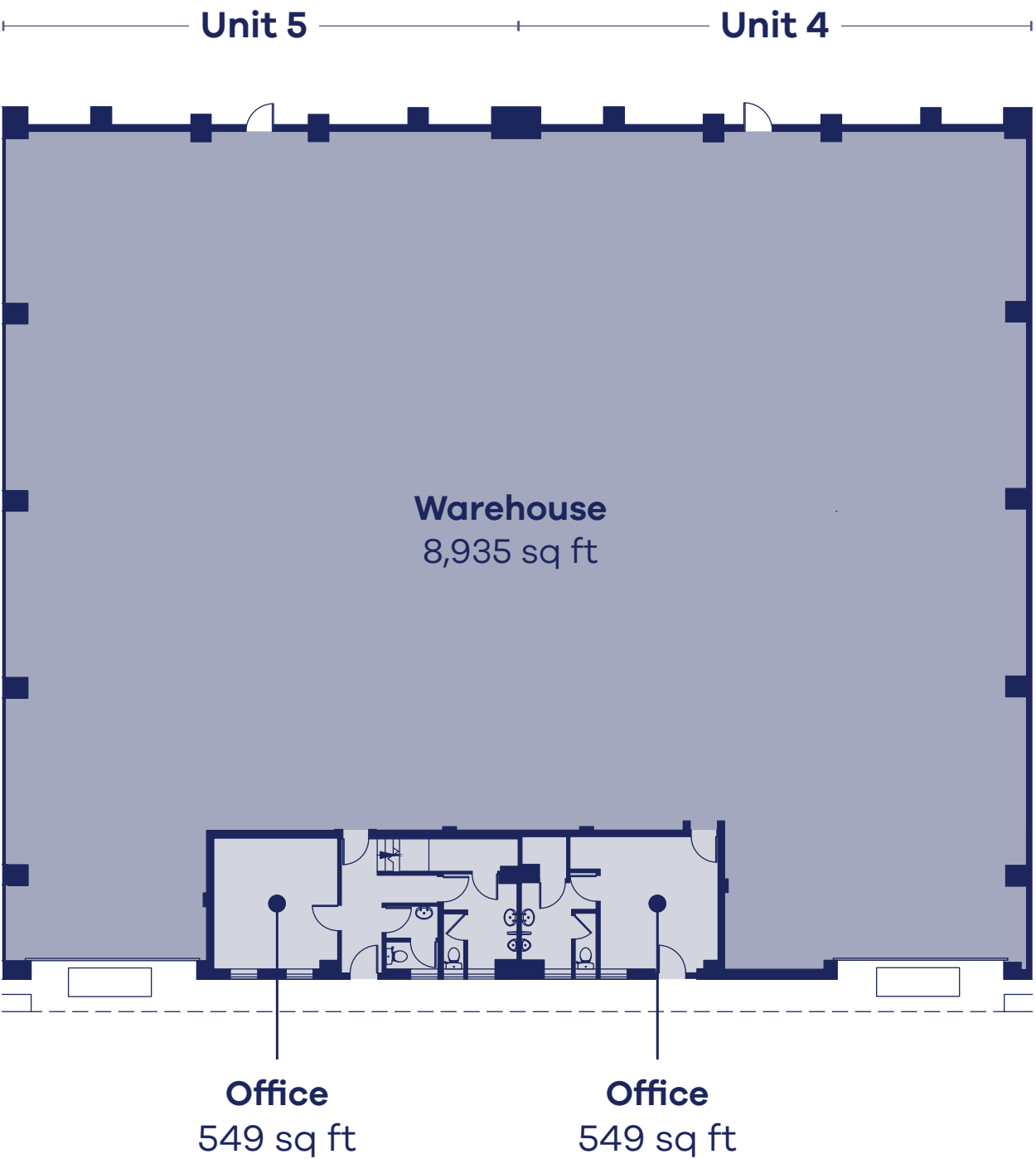
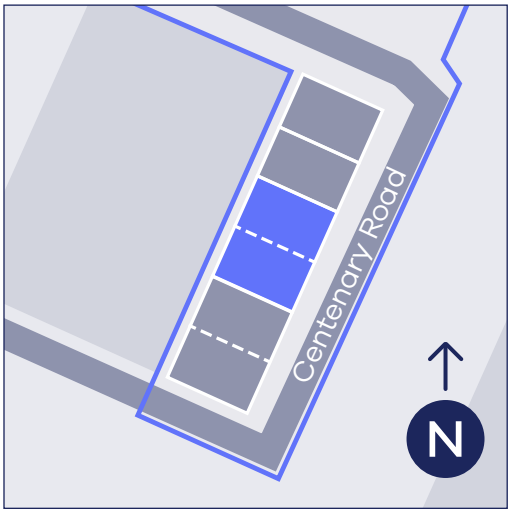
EPC A targeted
- 

12-17m yard depth
- 

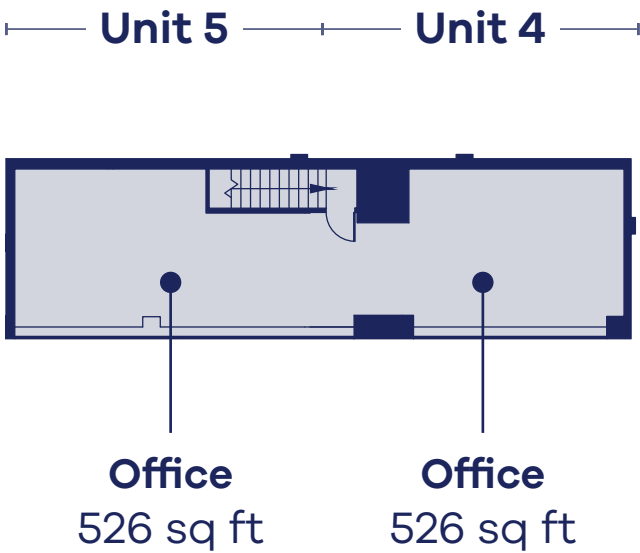
EV chargers



Computer generated image – indicative only



Ground Floor



First Floor

Units 6-7

- 

Extensively refurbished internally and externally
- 

5-6m clear internal eaves height
- 

Up to 276 KVA across the estate
- 

LED lighting
- 

Two-way access via Jeffreys Road
- 

Air source heat pumps
- 

Enhanced parking allocation
- 

EPC A targeted
- 

12-17m yard depth
- 

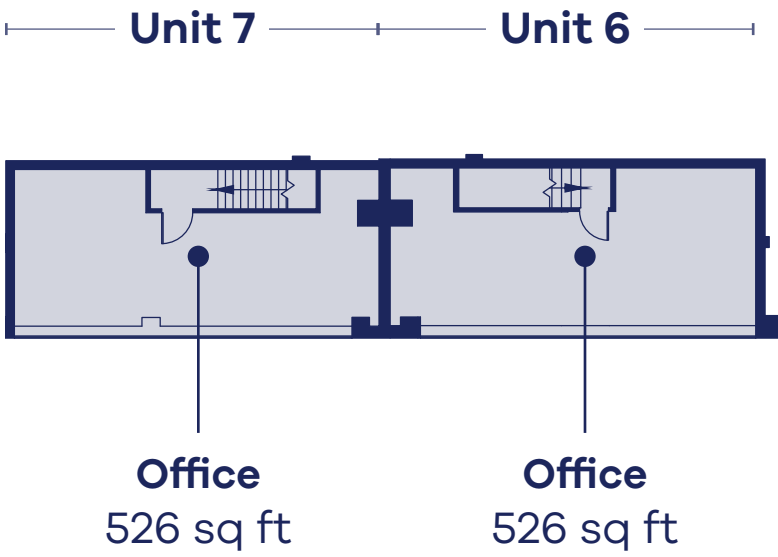
EV chargers



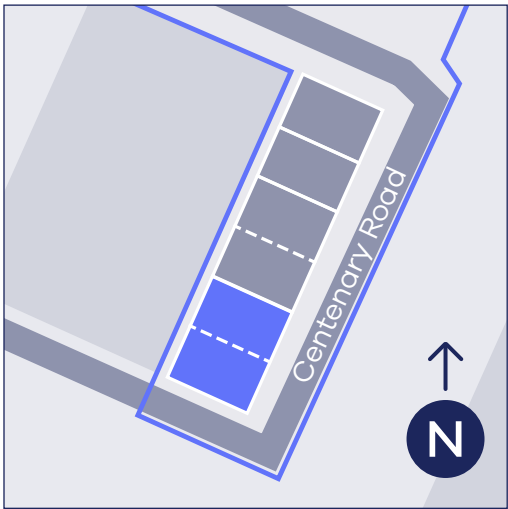
Computer generated image - indicative only



Ground Floor



First Floor



UNITS 2-7
33,436 sq ft total

Centenary Road

Unit 2

Unit 3

Units 4-5

Units 6-7

↔ Brimsdown
🚗 4 mins

Jeffreys Road

🚶 Southbury ↘
🚗 7 mins

↗ Ponders End →
🚗 4 mins

Get where you need to be

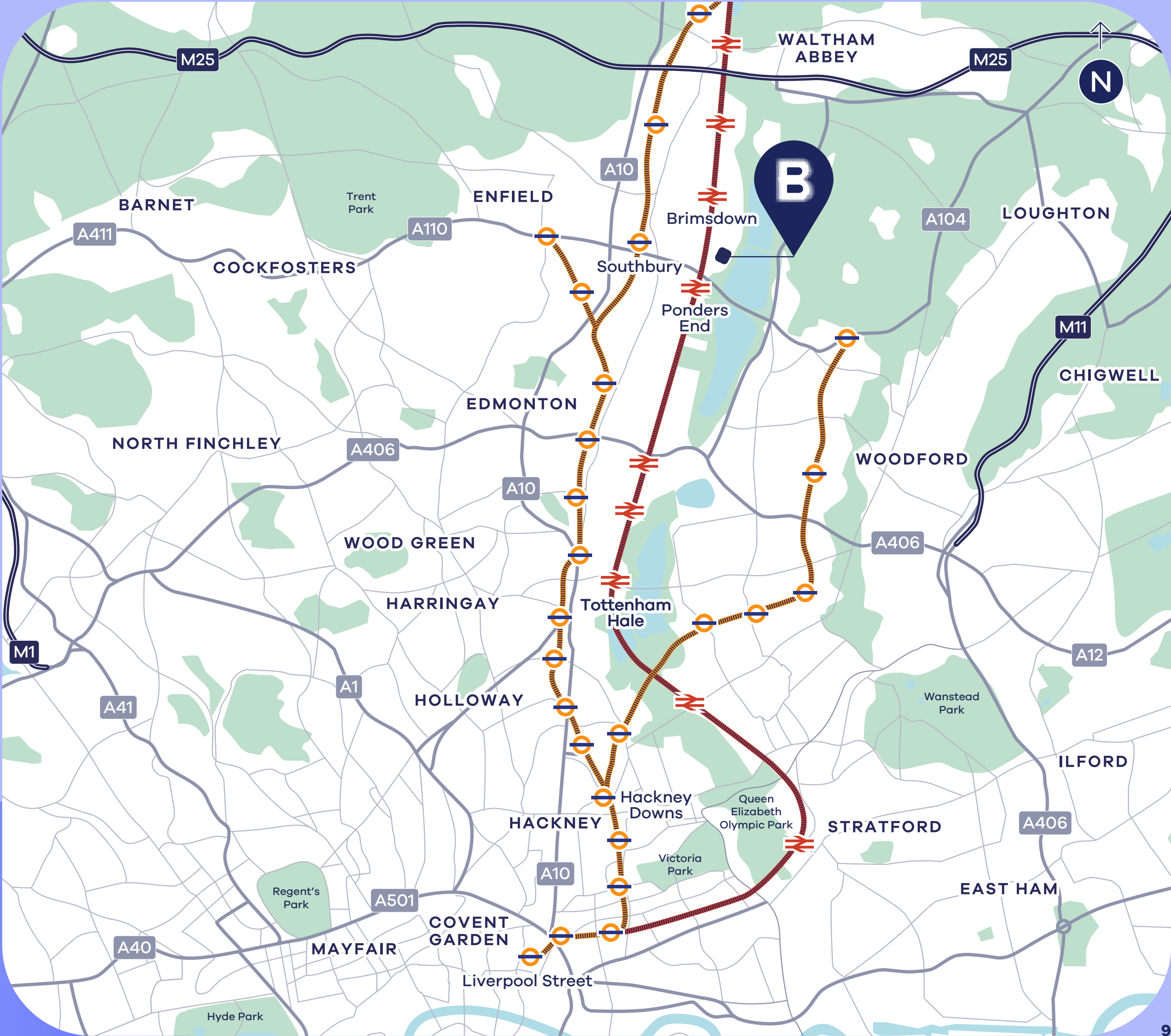
Bloom Enfield is strategically placed to provide rapid transport links into Greater London and northern districts of the M25. The A10 and A406 are just moments away from the hub of Centenary Road.

The site is a 15-minute drive to Tottenham Hale from Ponders End where you can reach Liverpool Street in 21 minutes via Greater Anglia railway services. Nearby London train and bus services into the city centre are all a short walk to the nearest Overground (Weaver line) station.

A10	4.3 miles
A406	5.6 miles
M25	8.2 miles
Central London	11.3 miles
London City Airport	17 miles
London Stansted Airport	30 miles
Luton Airport	32.6 miles

Brimsdown		14 mins walk
Ponders End		14 mins walk
Southbury		28 mins walk
Tottenham Hale		23 mins train
Hackney Downs	 	30 mins train
Liverpool Street	 	33 mins train

Travel times taken from Google Maps and are subject to change. Map is approximate and for illustrative purposes only.



Meet your neighbours

Enfield in is London’s second largest industrial location, with unrivalled access into Greater London and the key arterial routes.

Full of life with out of hours amenties aplenty and lots of green space to explore, Enfield is perfectly situated to be your base of operations from both an industrial and workforce perspective.

- 1

Amazon UK
- 2

ArrowXL
- 3

Beavertown Brewery
- 4

DHL
- 5

DPD North London
- 6

Euro Car Parts
- 7

Evri
- 8

FedEx
- 9

Gist Limited
- 10

London Film Studios
- 11

Madex Logistics
- 12

Ponders End Lock
- 13

Powerday
- 14

Safestore
- 15

Siemens
- 16

Rexel
- 17

Howdens
- 18

GSF Car Parts
- 19

HFD Flooring
- 20

Eurocell
- 21

Warburtons
- 22

The Range



Local insight

London Borough of Enfield

400,000

population projection by 2030

177,000

projected households by 2036

183,000

people employed in the area (75.7% of 16-64 year-olds)

£39K

average household income per annum.



Bloom

URBAN WAREHOUSES

For more information:

visit: bloom-urban.com

email: enquiries@bloom-urban.com

For letting enquiries:



Jeffrey Prempeh

jeffrey.prempeh@jll.com

07395 883 209

Peter Davidson

peter.davidson@jll.com

07920 597 574



Jack Booth

JBooth@sbyre.com

07739 751 830

Josh Garwood

JGarwood@sbyre.com

07943 176 189

The particulars are set out as a general outline for guidance and information only and should not be considered a formal offer. They are not to be taken as forming any part of a resulting contract nor be relied upon as statements or representations of fact, meaning no liability can be accepted for their accuracy. All dimensions are approximate and computer generated images are for illustrative purpose only. April 2025.