

The background image is a vibrant, multi-level interior space, likely a shopping or community hub. It features green walls, escalators, and various displays. People are seen walking and sitting in the space. The text "A vibrant mixed-use neighbourhood hub" is overlaid in a large, white, serif font. The word "vibrant" is written in a light blue, cursive script. The background image also contains text like "Wimbledon Quarter" on the walls and "GET A SHOT AT WINNING TICKETS" on a banner.

# A *vibrant* mixed-use neighbourhood hub

Wimbledon  
Quarter

SW19



# Welcome to Wimbledon Quarter, the newly refurbished neighbourhood hub buzzing with *energy!*

Discover an irresistible mix of shops, restaurants, fitness spots, workspaces, leisure experiences and events. Wimbledon Quarter is the go-to destination for everything you need, seconds from the station and at the heart of the local Wimbledon community.

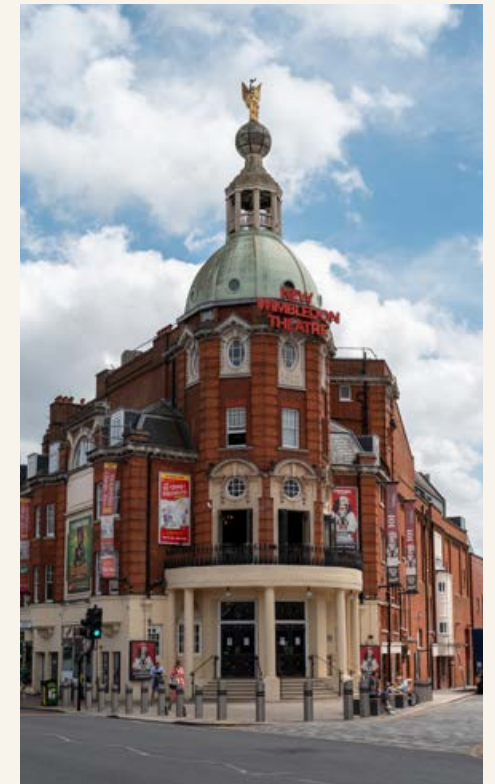
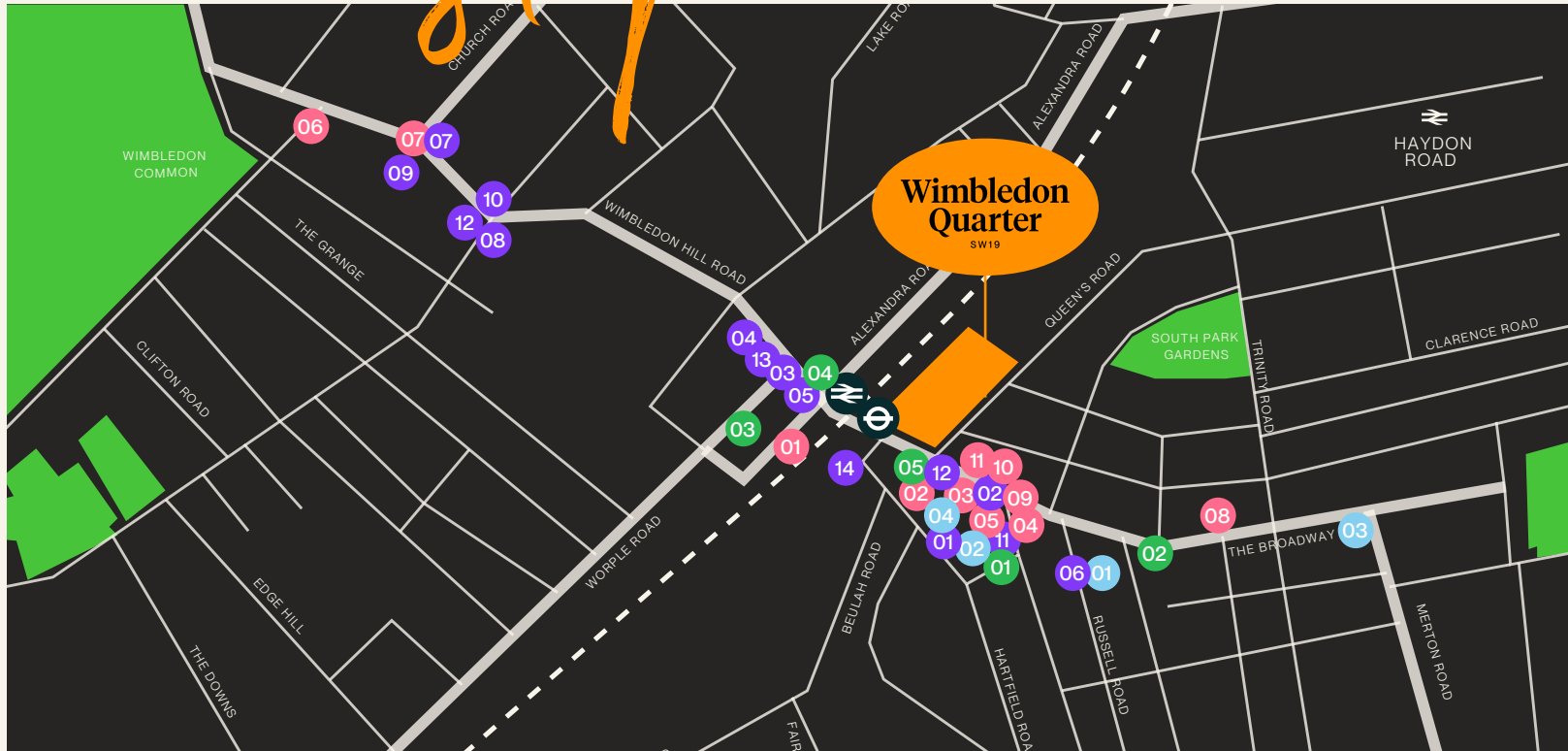
Take the opportunity to join an exciting commercial line-up and reach customers who are looking for a fun, unique and convenient shopping experience.





# Only your *doorstep*

Nearby, discover the department store, Elys and high street favourites Uniqlo and TK Maxx, as well as the independent boutiques and eateries of Wimbledon Village. There's lots to see on stage at New Wimbledon and Polka Theatres, or you can enjoy the latest blockbusters at Curzon and Odeon cinemas.



## FOOD & DRINK

- |                   |                    |
|-------------------|--------------------|
| 01 Bill's         | 09 Carluccio's     |
| 02 Tortilla       | 10 Megan's         |
| 03 Rosa's Thai    | 11 Wahacca         |
| 04 Sticks'n'Sushi | 12 Gail's          |
| 05 Pho            | 13 Wagamama        |
| 06 Nando's        | 14 Joe & The Juice |
| 07 The Ivy Café   |                    |
| 08 Côte Wimbledon |                    |

## RETAIL

- |                    |                    |
|--------------------|--------------------|
| 01 Elys Wimbledon  | 09 JoJo Maman Bebe |
| 02 JD Sports       | 10 Clarks          |
| 03 The Entertainer | 11 Waterstones     |
| 04 TK Maxx         |                    |
| 05 Uniqlo          |                    |
| 06 Space NK        |                    |
| 07 ba&sh           |                    |
| 08 Neptune         |                    |

## FITNESS

- 01 Nuffield Health
- 02 The Gym
- 03 Virgin Active
- 04 Anytime Fitness
- 05 PureGym

## ENTERTAINMENT & CULTURE

- 01 New Wimbledon Theatre
- 02 Odeon cinema
- 03 Polka Theatre
- 04 Curzon cinema

# Wimbledon in numbers

Wimbledon has a valuable local catchment with a large residential population within walking distance of Wimbledon Quarter.

525,000+

VISITORS CAME TO THE CHAMPIONSHIPS, WIMBLEDON IN 2024<sup>1</sup>

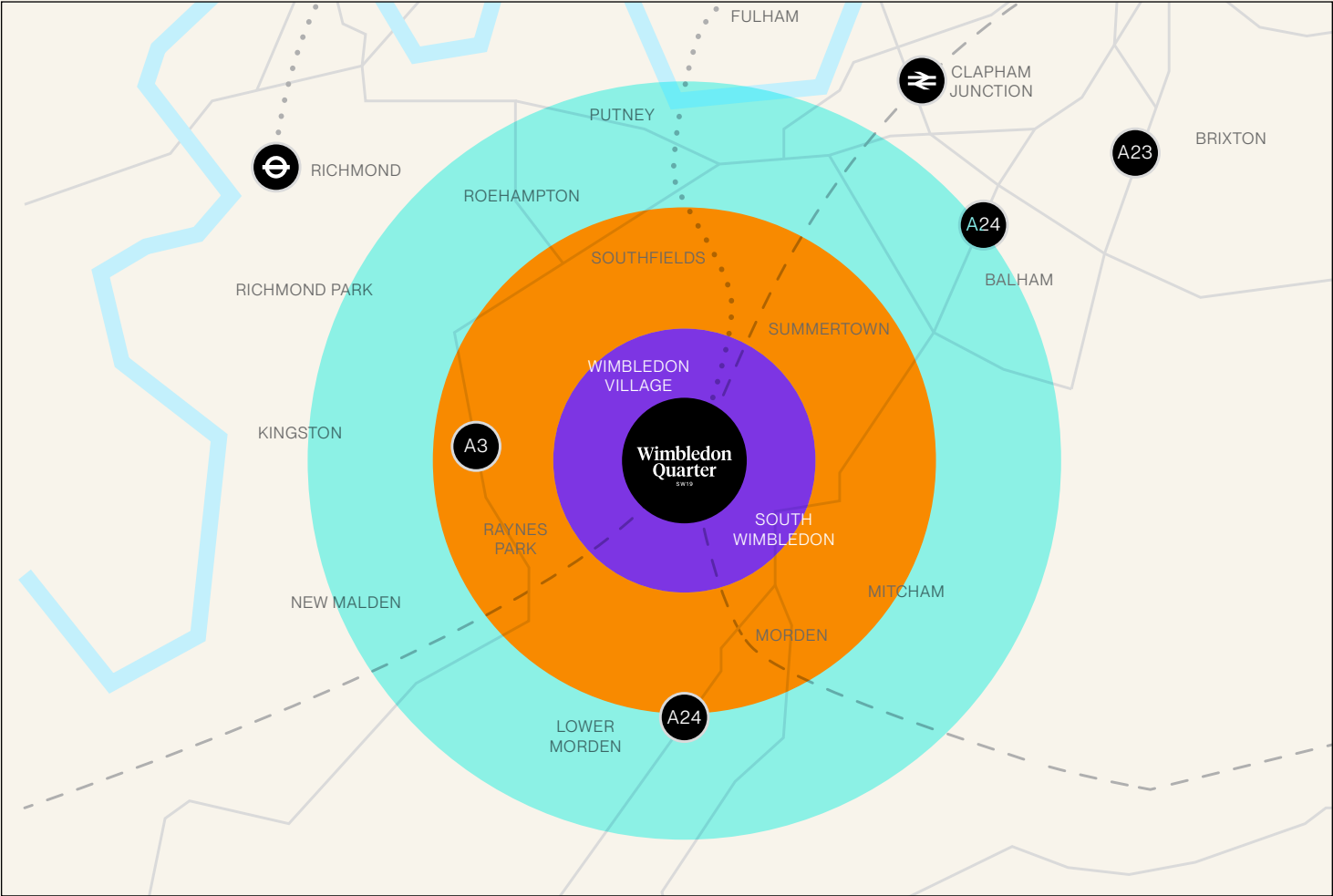
40%

OF RESIDENTS WITHIN A 2 MILE RADIUS OF WIMBLEDON QUARTER ARE BETWEEN 25 AND 44 YEARS OF AGE<sup>1</sup>

£71,000

THE AVERAGE HOUSEHOLD INCOME WITHIN THE 1-MILE ZONE. THIS IS 31% HIGHER THAN THE LONDON AVERAGE<sup>1</sup>

SOURCE: 1 - Aspinall & Aspinall 2- Mastercard spend data – Merton Council; Wimbledon bid football counterdata 2018 – 2023



	RESIDENTIAL POPULATION	NUMBER OF HOUSEHOLDS	ANNUAL SPEND (clothing, footwear, home)
1 MILE	53,402	23,248	£107M
2 MILES	203,005	85,233	£388M
3 MILES	470,125	193,141	£840M

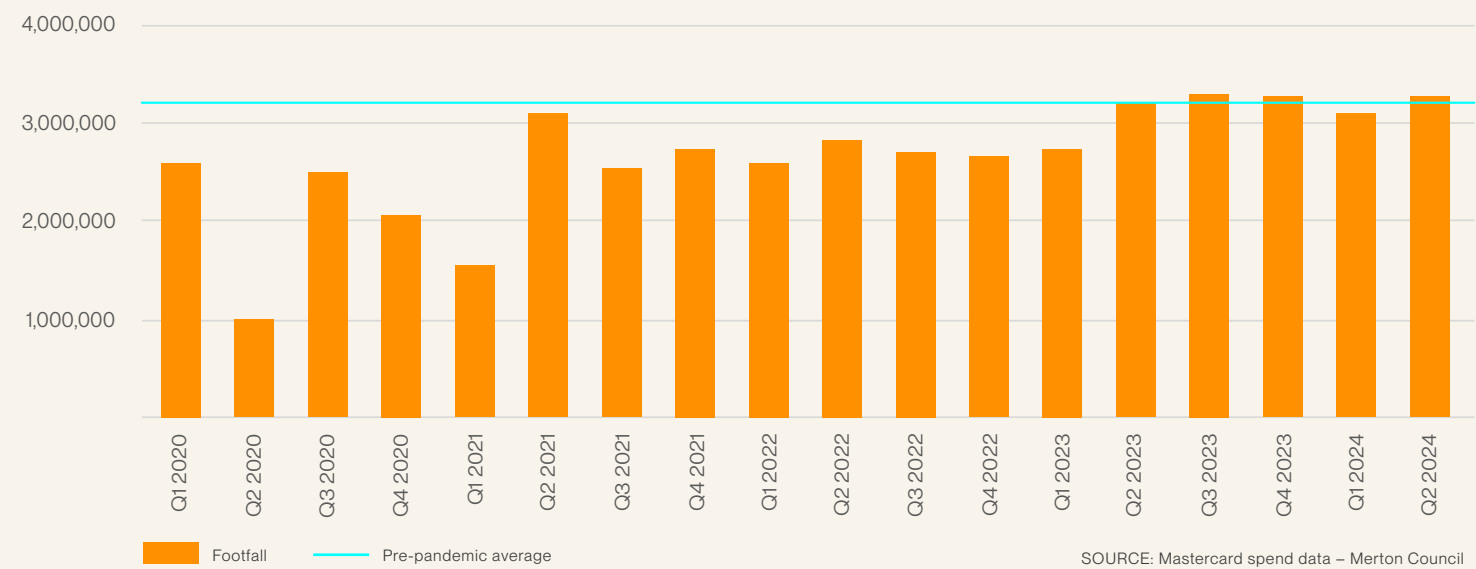
# Wimbledon has seen rapidly increasing footfall, leading to a rise in customer spending.

Footfall and spend in Wimbledon has consistently increased following COVID-19 with current spend levels 25% higher than 2019 pre-pandemic levels. This pattern can be seen across spend in other affluent southwest London neighbourhoods with Wimbledon out-performing these areas.

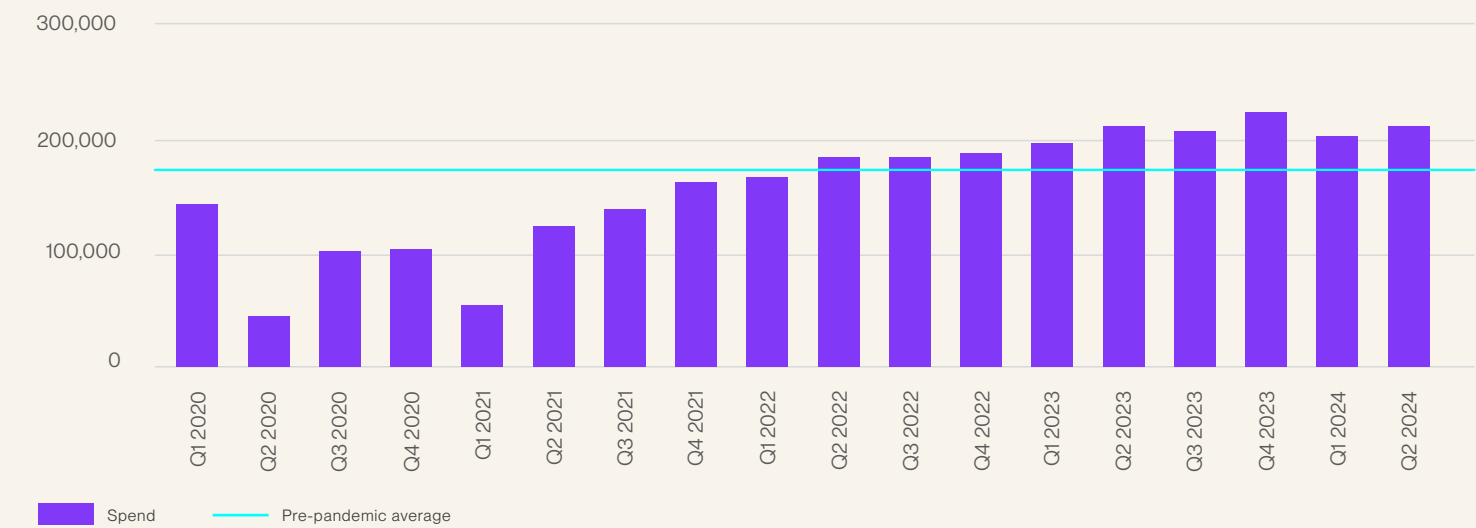
+14%

YoY FOOTFALL 2022 - 2023  
COMPARED TO LONDON  
AVERAGE -1.43%

Wimbledon BID footfall data (2020-2024)



Index value of Mastercard transactions (£) 2020-2024





# Brilliantly *connected*



SOURCE: TFL and National Rail

Wimbledon Quarter sits directly next door to Wimbledon station, with frequent trains and the District line into central London, as well as the Croydon tramlink and local buses.

## 14

TRAINS PER HOUR STOP  
AT WIMBLEDON STATION

## 16mins

TO CENTRAL LONDON BY TRAIN

## 30mins

TO CROYDON VIA TRAM

## 8mins

DRIVE TO THE A3

## 760

CAR PARKING SPACES ONSITE



760 underground parking spaces on site, including accessible parking and lifts.



SWR runs fast, frequent services to London Waterloo and southbound services to stations including Dorking, Richmond, Guildford, Cobham and Woking.



District line to Paddington and Upminster via Earl's Court making both the West End and the City within easy reach.



Regular tram services to Beckenham Junction and Elmers End, which also serves Mitcham Junction, West Croydon and East Croydon stations.







# A new chapter

WIMBLEDON QUARTER NOW SETS THE STANDARD FOR URBAN MIXED-USE LIFESTYLE SCHEMES. WITH SIGNIFICANT INVESTMENT, THE AMBITIOUS REFURBISHMENT PROGRAMME, INCLUDING A RETRACTABLE ROOF, HAS REVITALISED THE SPACE AND ITS DYNAMIC OFFERING IS THRIVING.

Not only do locals pop in for M&S Food, Oliver Bonas, H&M, Boots, Pandora and Costa Coffee; but they are also drawn in by luxury health club Third Space, children's activity space The Little Gym and golfing fun at Caddi Club. With free public WiFi throughout and coworking brand Huddle providing flexible workspace and meeting rooms, Wimbledon Quarter will attract even more professionals.







# In good company



## Shop

A lively mix of shops serving the local community from Boots and Superdrug to Oliver Bonas, Smiggle and H&M.



## Eat

A barista café, a stylish rooftop bar and restaurant at 601 Queen's Rd and quality food providers such as M&S Food.



## Train

An array of health & fitness services on offer, from a world-class wellness and training sanctuary to a Pilates-inspired, full body burn workout.



## Play

All-weather entertainment and activities, such as children's activities and gymnastics at The Little Gym and golf at Caddi Club.



## Work

A diverse range of workspaces with collaborative coworking, bespoke offices and meeting rooms.

OLIVER BONAS *H&M*  
*Boots* Holland&Barrett  
PANDORA *Smiggle*  
WHSmith *so. shell*

601 QUEEN'S RD *KOKORO*  
*COSTA* *M&S* *Amorino*  
— FOOD —  
*HOTEL Chocolat.* *URBAN* *huddle*  
*THE FIRE STATION CAFE*

THIRD  
SPACE  
*STRONG*

*CADDI CLUB*  
*THE LITTLE GYM*

*huddle* *BOUTIQUE.CO*  
Café | Coworking | Community *THE OLD TOWN HALL*  
*8* *Nineteen* *IGLU.COM*  
QUEENS ROAD WIMBLEDON





#### ◀ FORMER MAGISTRATES COURT

A food and beverage opportunity in the newly renovated Old Magistrates' Court on Queen's Road.

#### ▼ 8 QUEEN'S ROAD

A world class office space with high ceilings, terraces and outstanding levels of natural light. The newly refurbished office space, flanked by an 8,000 sqft private terrace, boasts large efficient floorplates of up to 28,500 sqft with 4.5 metres of floor-to-ceiling height.

# A bright *future*

As part of the redevelopment plans of Wimbledon Quarter, a new restaurant cluster is being created on Queen's Road, with enhanced public realm and planting to create a new dining and leisure focus in Wimbledon.

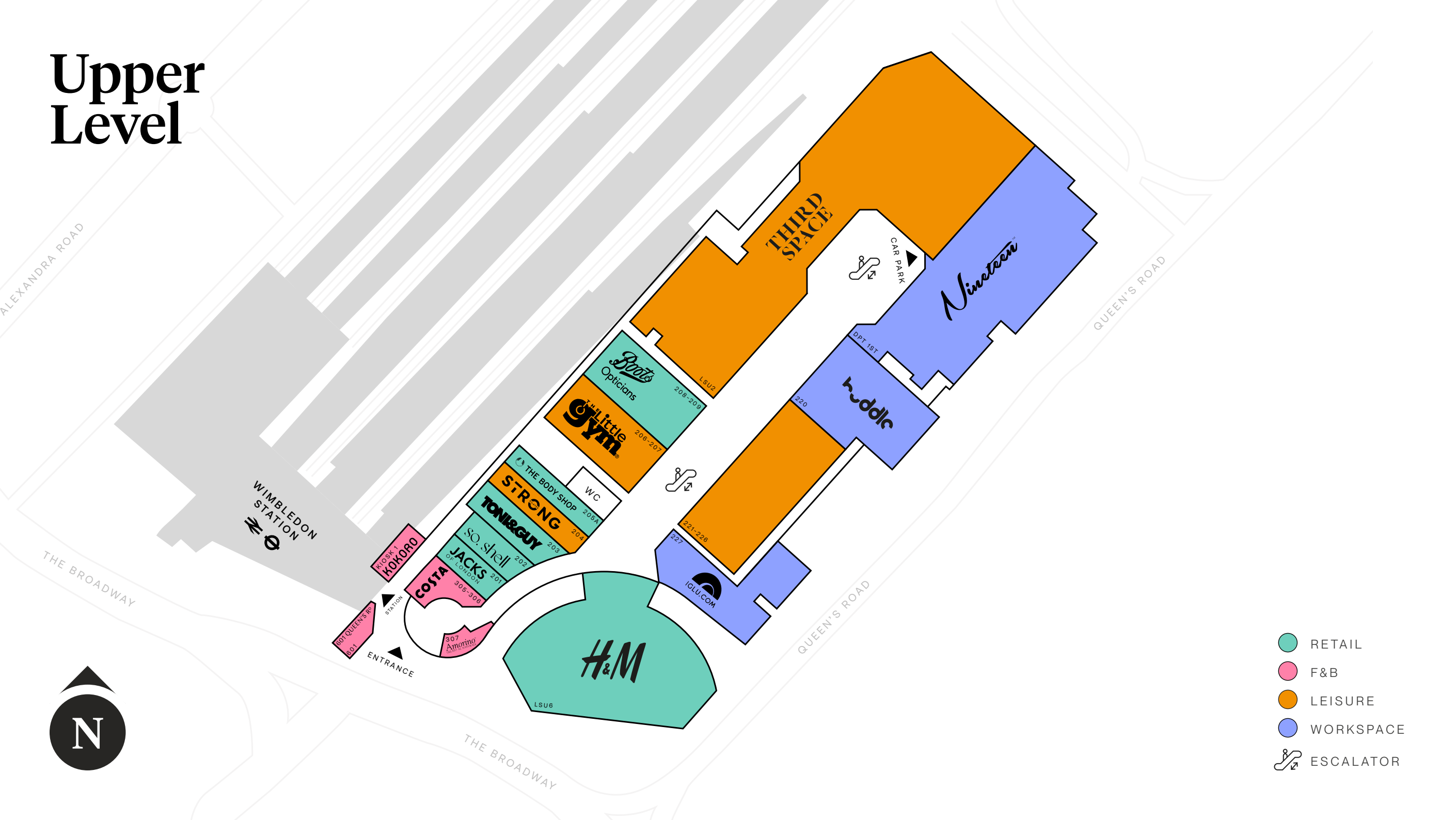






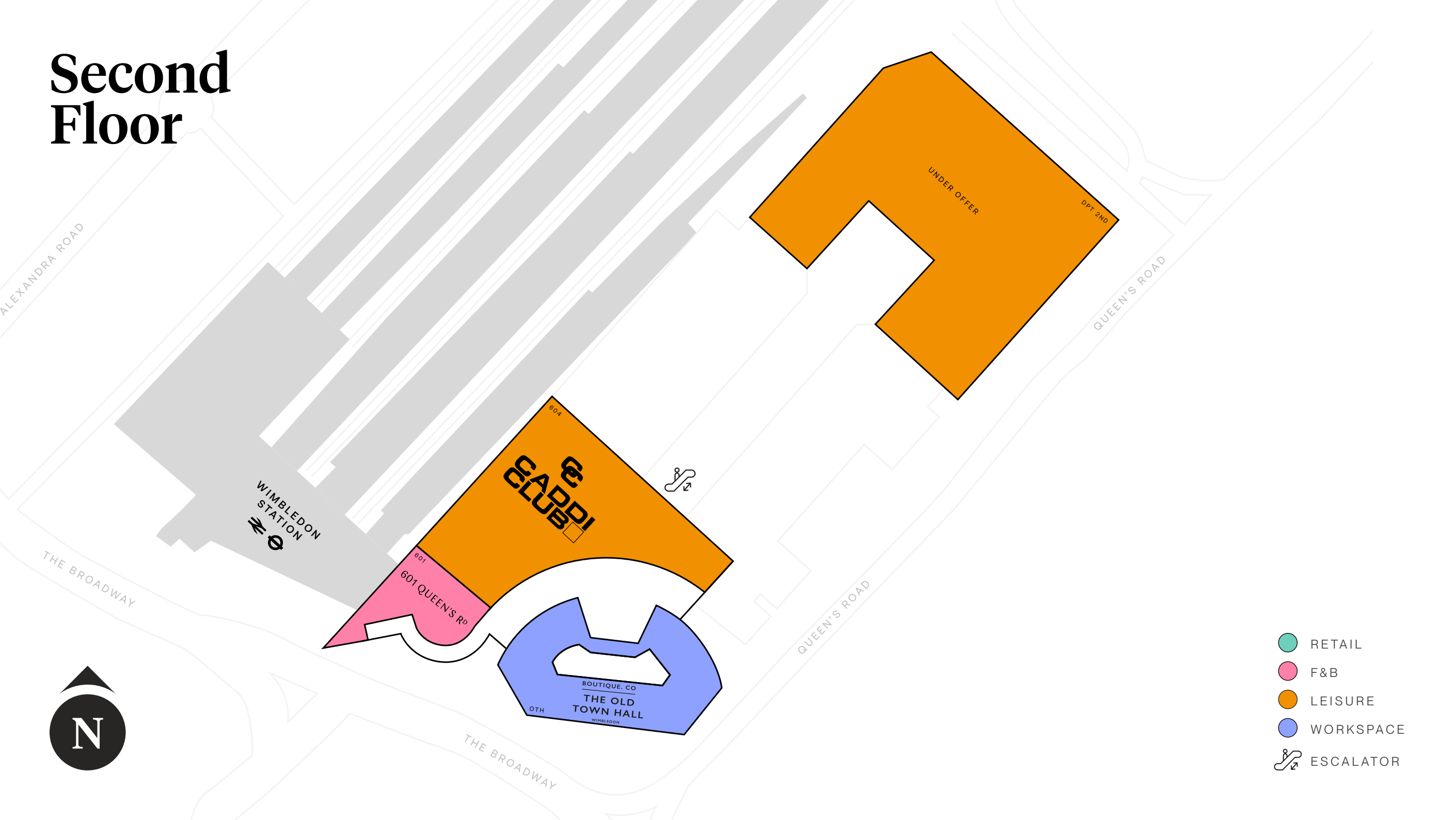


# Upper Level





# Second Floor







# Good movey

We are committed to transforming Wimbledon Quarter into a dynamic hub for the community, through environmentally friendly and sustainable improvements. As part of our commitment we support a part-time urban farmer and recycle used coffee grounds to grow mushrooms which are then supplied to local restaurants and eateries.

SOURCE: \*ARUP Report 2023



5000 TONS OF CARBON  
SAVED BY RETAINING  
STRUCTURE\*



ZERO WASTE TO  
LANDFILL POLICY  
IMPLEMENTED



MUSHROOM FARM  
RECYCLES USED COFFEE



ROOFTOP BEEHIVES  
PRODUCING LOCAL HONEY



100% OF ELECTRICITY  
FROM RENEWABLES



NEW LED LIGHTING ROLLED  
OUT ACROSS THE CENTRE



ONSITE TEAM ALL PAID  
LONDON LIVING WAGE  
AS A MINIMUM



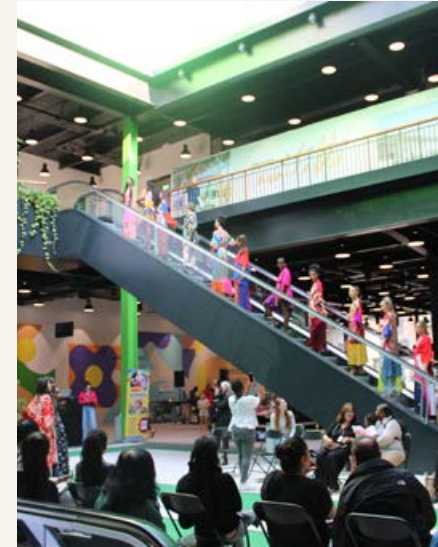
RETRACTABLE ROOF  
BRINGS IN FRESH AIR



CHANGING  
PLACES FACILITY

## SUPPORTING THE COMMUNITY

We work with and support local charities and community organisations to drive employment and innovation within our neighbourhood.





# Get in touch

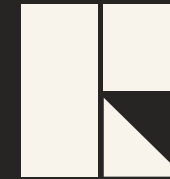
**P-THREE®**

Michaela Moreton

07943 009 766  
michaella@p-three.co.uk

Thomas Rose

07793 024 403  
thomas@p-three.co.uk



Dominic Waldron

0207 084 6929  
dominicw@romulusuk.com



Toby Sykes

07764 398 240  
toby.sykes@cushwake.com

Alice Hershman

0207 152 5798  
alice.hershman@cushwake.com

## Wimbledon Quarter

SW19

Wimbledon Quarter  
4 Queen's Road  
Wimbledon  
SW19 8ND

wimbledonquarter.com

P-THREE and Cushman & Wakefield on their behalf and for the Vendors or Lessors of this property whose Agents they are, give notice that: 1. These particulars are set out as a general outline only for guidance to intending Purchasers or Lessees, and do not constitute any part of an offer or contract. 2. Details are given without any responsibility and any intending Purchasers, Lessees or Third Parties should not rely on them as statements or representations of fact, but must satisfy themselves by inspection or otherwise as to the correctness of each of them. 3. No person in the employment of P-Three and Cushman & Wakefield has any authority to make any representation themselves or warranty whatsoever in relation to this property. 4. Unless otherwise stated, all prices and rents are quoted exclusive of VAT. July 2025

A development by **Romulus**