

## FLOOR PLANS:

### FLOORS

### SIZE SQ FT

### SIZE SQ M

second floor

LET TO KSUBAKA

first floor

2,540 sq ft

236.04 sq m

ground & mezzanine

3,701 sq ft

343.84 sq m

lower ground floor

LET TO GINGER WHISK

**TOTAL AVAILABLE SPACE**

**6,241 sq ft**

**769.14 sq m**

front ground (splits available)

2,302 sq ft

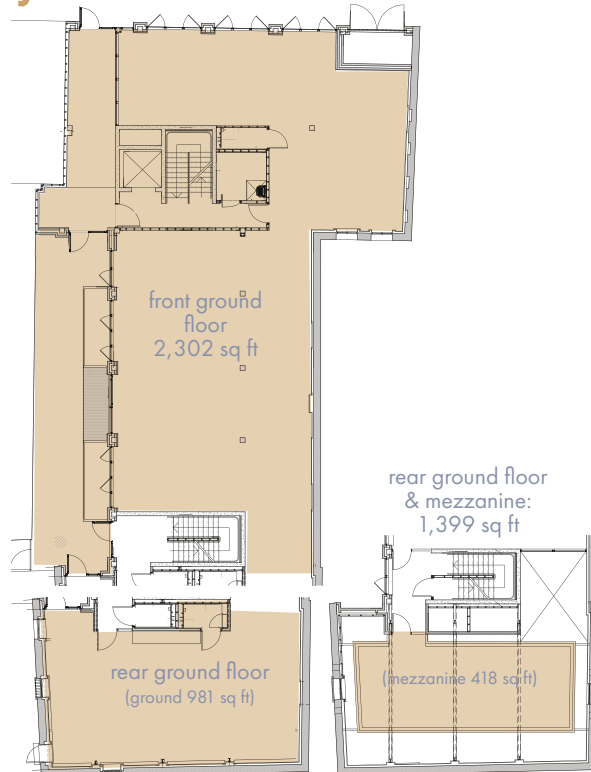
213.86 sq m

ground floor & mezzanine (splits available)

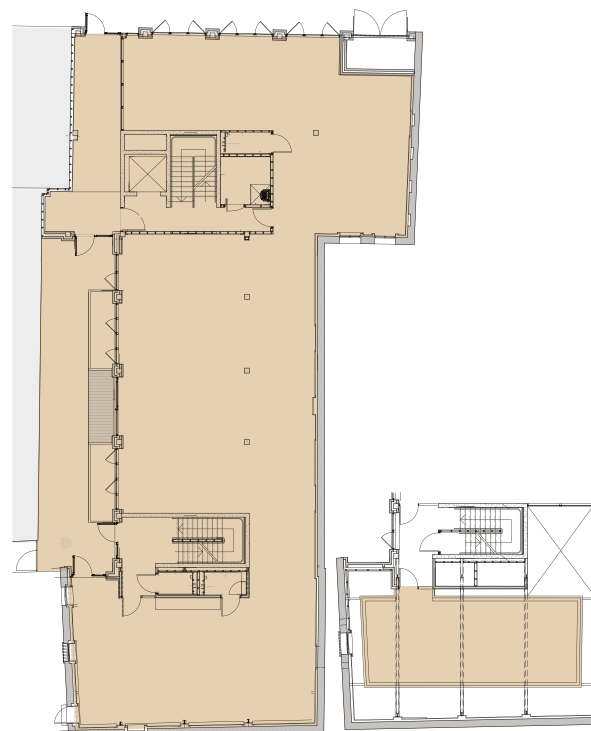
1,399 sq ft

129.97 sq m

### front ground floor ground floor & mezzanine



### ground floor & mezzanine



### first floor

