



 Chineham Park

3 Elmwood

First floor offices available

2,937 sq ft To Let

Your new office

3 Elmwood provides flexible, high quality space to suit your business needs.

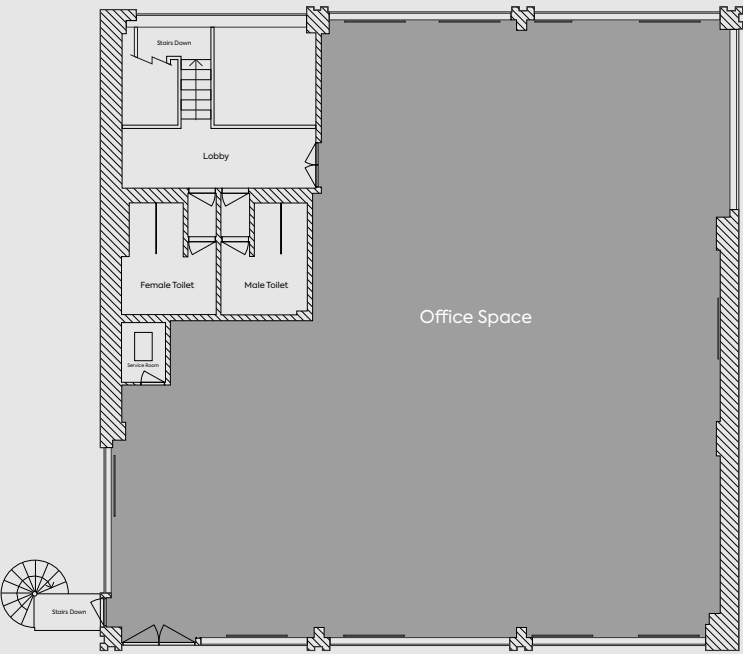
- Newly refurbished
- Brand new air con
- Centre of park with woodland views
- Double height atrium reception
- EPC – C
- Triple aspect windows
- LED lighting
- Excellent parking ratio
- Energy savings & low running costs

Net Internal Area	SQ FT	SQ M	Parking spaces
-------------------	-------	------	----------------

First floor	2,937	273	13
-------------	-------	-----	----

*Net internal area / *Plans not to scale. Indicative Only

Indicative floorplan
First floor



Trainline connecting
Basingstoke to London
Waterloo in 1hr

Easy road
connections to
A339, A33, M3 & M4

Amenity field
with outdoor
seating

Regular
street food,
social and
fitness events

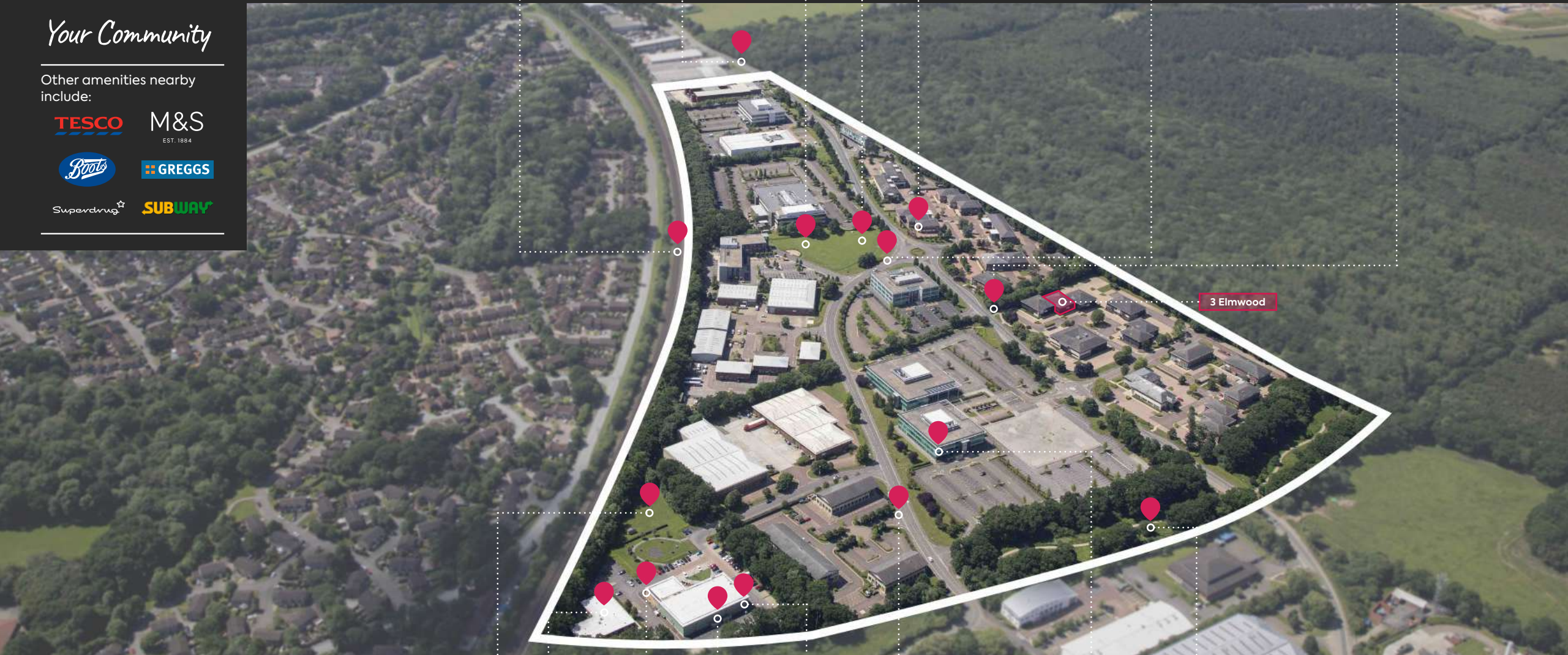
Gather & Gather cafe
with The Exchange
co-working space

Wifi across The
Green and in
The Exchange

Jogging/
walking route
start point

Your Community

Other amenities nearby
include:



3 Elmwood

Amenity
field

Bright
Horizon
nursery

EV charging
points at
Spindlewood

Chineham
hair &
beauty
salon

Fitness
First gym

Free shuttle bus into
Basingstoke town centre
and train station every
15 minutes

New cafe
arriving
2023

Parklands: walking
routes and
bio-diversity areas

Enhanced wellbeing for your people

Chineham Park is part of the largest area certified for health and wellbeing excellence globally, through the Fitwel rating scheme. Fitwel is the most widely used people-focused certification for health and wellbeing excellence in the built environment, and is recognised worldwide for its assessment of holistic health measures.

Chineham Park offers an attractive environment thanks to its diverse mix of on-site amenities and facilities, coupled with open, green spaces, excellent pedestrian connectivity, fitness areas and healthy food options, to help your employees achieve a better work/life balance.



Onsite fitness classes



Community events



Chineham Park
running club



Fitness First



Bright Horizons
nursery



Beautician and
hairdressers



24hr on-site
security



Courtesy buses
and taxis



Excellent landscaping
across 95 acres, including
900 mature trees



The Exchange &
co-working space



Gather & Gather
café



Street food
events

The Exchange

The Exchange is a concept from Frasers Property that provides an agile and welcoming workspace for dynamic companies and their people who want to connect in an inspiring, technology rich environment.

The Exchange is operated by Gather + Gather, offering breakfast, lunch and all day food and drink options including hot paninis, soups, sandwiches, breakfast baps, sweet and savoury snacks and great coffee.



Agile working
space



Meeting
rooms



Flexible
working



Artisan
coffee



Sustainability at Chineham Park

Chineham Park is proud to be targeting net zero carbon by 2030 for managed areas, aligned with certification scheme Science Based Targets, to limit warming to 1.5°C. The park will achieve this through energy efficiency measures, procurement of 100% renewable electricity, and rooftop solar PV installations. Enhancing biodiversity across the park, minimising waste to landfill, and promoting cycling and active travel are more ways Chineham Park is helping our occupiers be more sustainable.

Chineham Park aims to generate social value in the local community. The park fundraises for local charity, Sebastian's Action Trust, and supports an apprenticeship employment programme.



Green flag
award



90% of
waste
recycled



100%
renewable
energy in
common areas



Sustainability
improvement
plans in place



Rooftop solar
PV roll out



EV charging
points



Bird boxes &
insect hotels



Bicycle lanes



Air quality
monitoring



ISO 14001
Environmental
Management
system

Your Community

Chineham Park is one of the region's most desirable business addresses. A delightful 90 acre parkland setting that's a breath of fresh air for the people who work there. Customer convenience and wellbeing is at the heart of the comprehensive amenity offer and events schedule. The park is equally accessible by car or bike, with superb public transport links too, including an exclusive free bus service connecting people directly to the nearby Basingstoke train station.



Get in touch

If you're interested in joining a business community in high quality office space, amongst an abundance of amenities and events, please contact one of the team today:

CBRE

Matt Willcock
+44 (0)7920 117 257
matt.willcock@cbre.com

Dom Clarke
+44 (0)7766 721 036
dom.clarke@cbre.com

HOLLIS HOCKLEY

Rhodri Shaw
+44 (0)7768 448 211
rhodri.shaw@hollishockley.co.uk

Jeremy Metcalfe
+44 (0)7587 039 562
jeremy.metcalfe@hollishockley.co.uk

Alice Hilliard
+44 (0)7557 280 885
alice.hilliard@hollishockley.co.uk

Elizabeth Gray
+44 (0)7712 815 268
elizabeth.gray@hollishockley.co.uk



 **ChinehamPark**

Frasers Property's commitment is to deliver enriching and memorable experiences for our customers and stakeholders across the integrated portfolio and services we provide. We have businesses in Singapore, Australia, Europe, China and Southeast Asia, and a hospitality footprint spanning over 80 cities.

Contact:

Chris Stevens
chris.stevens@frasersproperty.com

Kipp Harden
kipp.harden@frasersproperty.com

chinehampark.co.uk

Misrepresentation Act 1967: At the time of printing the contents of this brochure were believed to be correct but cannot be guaranteed and are expressly excluded from any contract. January 2023.

