

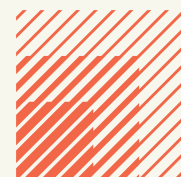


## First Floor, 22 Compass Point

Ensign Way, Hamble, Southampton SO31 4RA

**TO LET**

216.17 sq.m. (2,327 sq. ft.)



**HELLIER  
LANGSTON**

[www.hlp.co.uk](http://www.hlp.co.uk)

01329 220111    [fareham@hlp.co.uk](mailto:fareham@hlp.co.uk)

# Recently refurbished first floor offices

## Description

The unit is sited in an enviable waterside location overlooking Southampton Water. The office suites are located on the first floor of a two storey terraced building which was constructed in 2003 with brick elevations, powder-coated aluminium double-glazed windows and profile sheet clad shallow pitched roof.

Internally, the accommodation has been recently refurbished and will be decorated before occupation. It includes the following specification:-

- WC facilities and a shower
- Perimeter trunking
- LED lighting on PIRs
- Heating & cooling cassettes
- Allocated and shared parking spaces
- EV charging
- Gas central heating
- 2 x kitchen areas
- Boardroom and private offices

The office is available with existing furniture, if required, including boardroom set up with presentation screen.

There are 5 parking spaces at the front of the site, where the EV charger is located, and shared use of 10 spaces within the parking area to behind the property on the waterside.

## Terms

Available on a new effectively full repairing and insuring lease at a rent of £37,000 per annum exclusive.

## Accommodation

The accommodation has been measured in accordance with the RICS Code of Measuring Practice (6th Edition) to NIA as follows:

Accommodation	sq. m.	sq. ft.
First Floor	216.17	2,327

## Rateable Value

Offices and premises £25,750.

Source: [www.tax.service.gov.uk/business-rates-find/search](http://www.tax.service.gov.uk/business-rates-find/search)

## EPC

Rating -C70

## VAT

All prices quoted are exclusive of VAT. VAT is payable on rents

## Estate Charge & Building Charge

The budgeted external service charge is £1,788.11 per annum/ £149.01 plus VAT per month and the budgeted internal service charge is £2,161.09 per annum/ £180.09 plus VAT per month.

## Code of Leasing Business Premises

In England and Wales the Code for Leasing Business Premises, 1st edition, strongly recommends that any party entering into a business tenancy or lease agreement takes professional advice from a surveyor or solicitor. A copy of the Code (1st edition, February 2020) can be found on the RICS website.

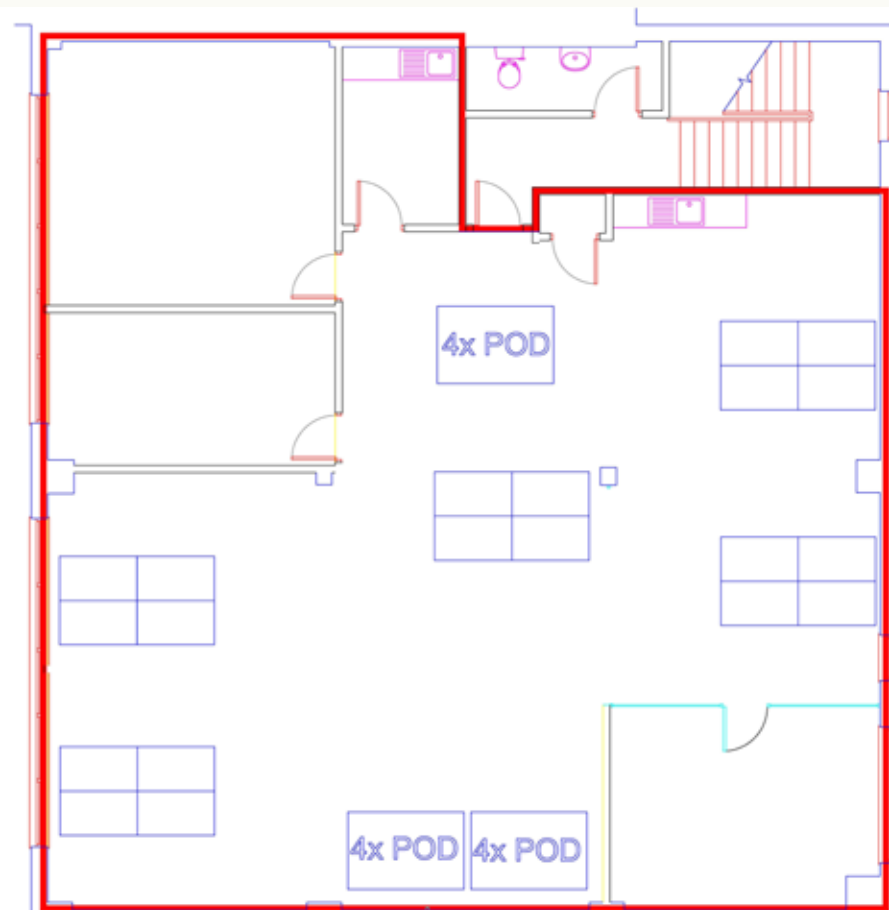
## AML

In order to comply with Anti-Money Laundering Regulations 2017 (as amended) and the Proceeds of Crime Act 2002, Hellier Langston are required to identify all prospective purchasers and tenants.





# Recently refurbished first floor offices



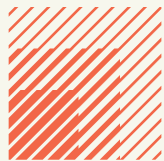
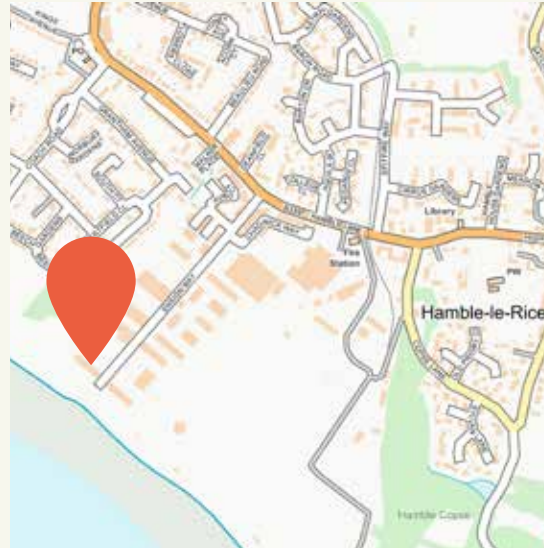
First Floor



# Location

22 Compass Point is located within the South Point Business Park, 4 miles from J8, M27 and ½ a mile to Hamble village centre amenities and the waterfront.

Nearby occupiers include NKT Photonics, the RYA and Coopervision who have multiple large industrial premises to the north of the estate.



## HELLIER LANGSTON

[www.hlp.co.uk](http://www.hlp.co.uk)

01329 220 111    [fareham@hlp.co.uk](mailto:fareham@hlp.co.uk)

Disclaimer: Hellier Langston Limited gives notice that these particulars are set out as a general outline only for the guidance of intending Purchasers or Lessees and do not constitute any part of an offer or contract. Details are given without any responsibility and any intending Purchasers, Lessees or Third Party should not rely on them as statements or representations of fact but must satisfy themselves by inspection or otherwise as to the correctness of each of them. No person employed or engaged by Hellier Langston Limited has any authority to make any representation or warranty whatsoever in relation to this property.



## Contact us

Direct your viewing request and enquiries to:-



**Patrick Mattison**

07926 581464

[patrick@hlp.co.uk](mailto:patrick@hlp.co.uk)



Strictly by appointment with sole agents Hellier Langston.