



NEW BRIDGE  
STREET

To Let 1,363 - 3,205 sq ft

16 - 18

# NEW BRIDGE STREET LONDON

16-18 New Bridge Street sits on a prominent corner at the intersection of New Bridge Street and Tudor Street, within one of central London's most well-connected locations.

The Midtown submarket continues to attract a diverse range of occupiers, drawn by its ease of access across the capital.

The 6th and 1st floor offices are currently available. The floors are available to be delivered flexibly, with either a Cat A refurbishment or landlord-fitted solution available subject to occupier requirements. The building benefits from two passenger lifts and upgraded communal facilities, including a staffed reception, bike storage and shower facilities.





CONCIERGE RECEPTION FOR  
THE MODERN WORKPLACE.



DESIGNED FOR MODERN,  
FLEXIBLE WORKING.

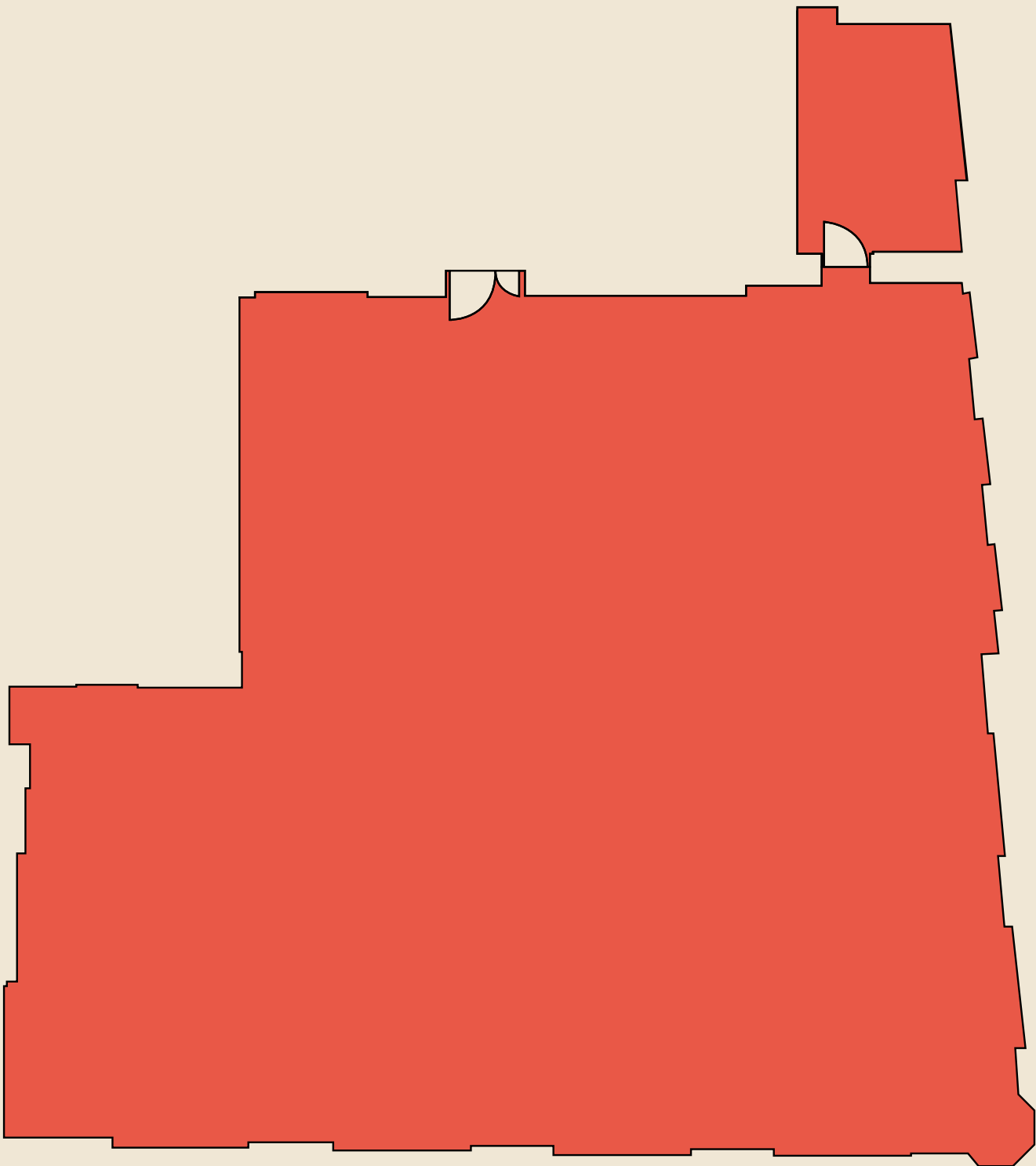
Indicative CGI of fit out of first floor.  
Credit [www.greyinteriors.co.uk](http://www.greyinteriors.co.uk)

# FIRST FLOOR

FLOORPLAN

INDICATIVE SPACEPLAN

Tudor Street



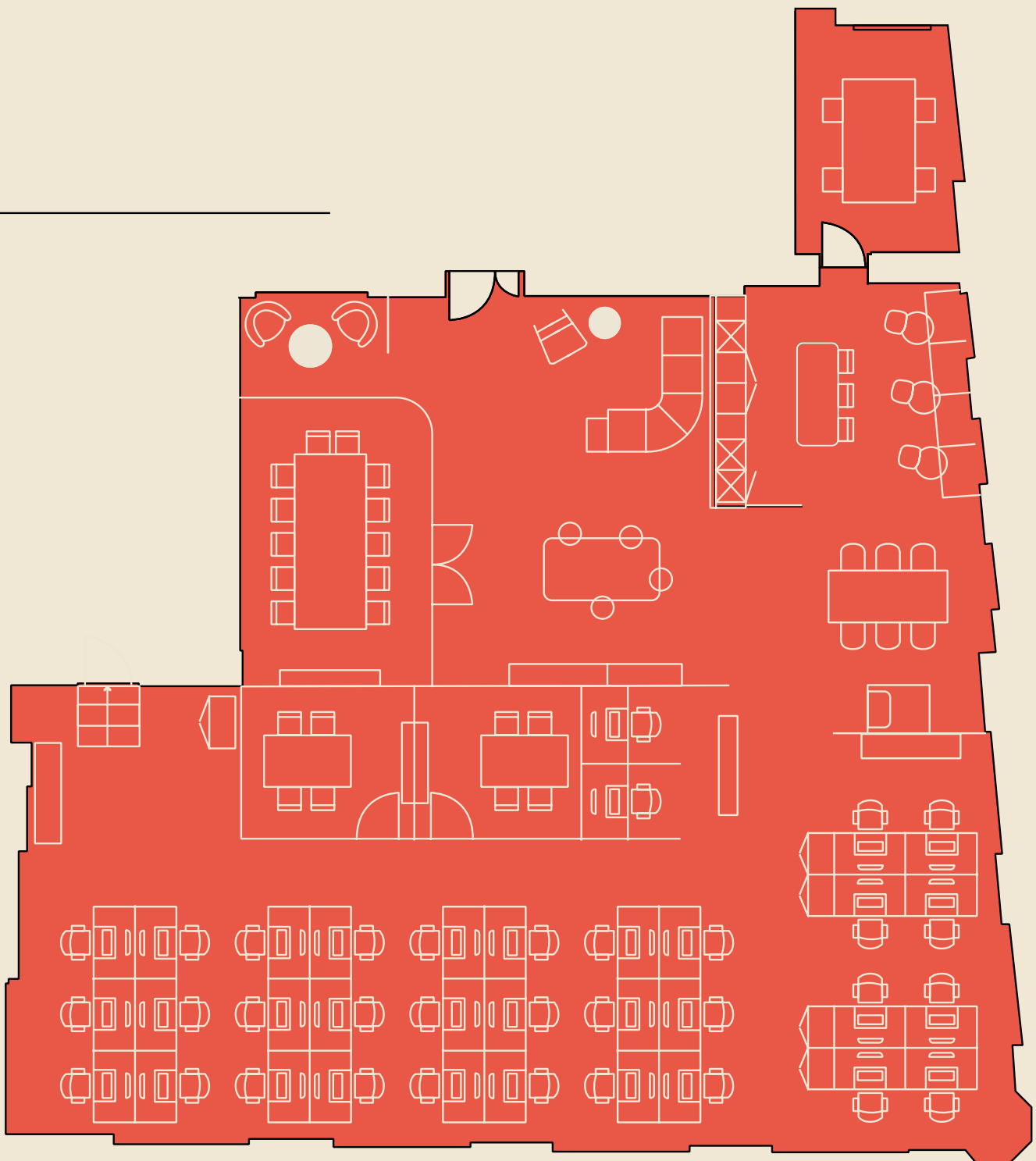
## INDICATIVE FITOUT

- 32 x Open Plan Desks
- 1 x 12 person Meeting Room
- 3 x 4 person meeting rooms
- 6 x person collaboration space
- 2 x video call booths
- 1 x Kitchen / breakout space

**NET INTERNAL AREAS** 3,205 sq ft

**GROSS INTERNAL AREAS** 3,867 sq ft

New Bridge Street





CRAFTED TO HELP  
PEOPLE COLLABORATE  
AND SUCCEED.



Indicative CGI of fit out of sixth floor.  
Credit [www.greyinteriors.co.uk](http://www.greyinteriors.co.uk)

# SIXTH FLOOR

FLOORPLAN

INDICATIVE SPACEPLAN

## INDICATIVE FITOUT

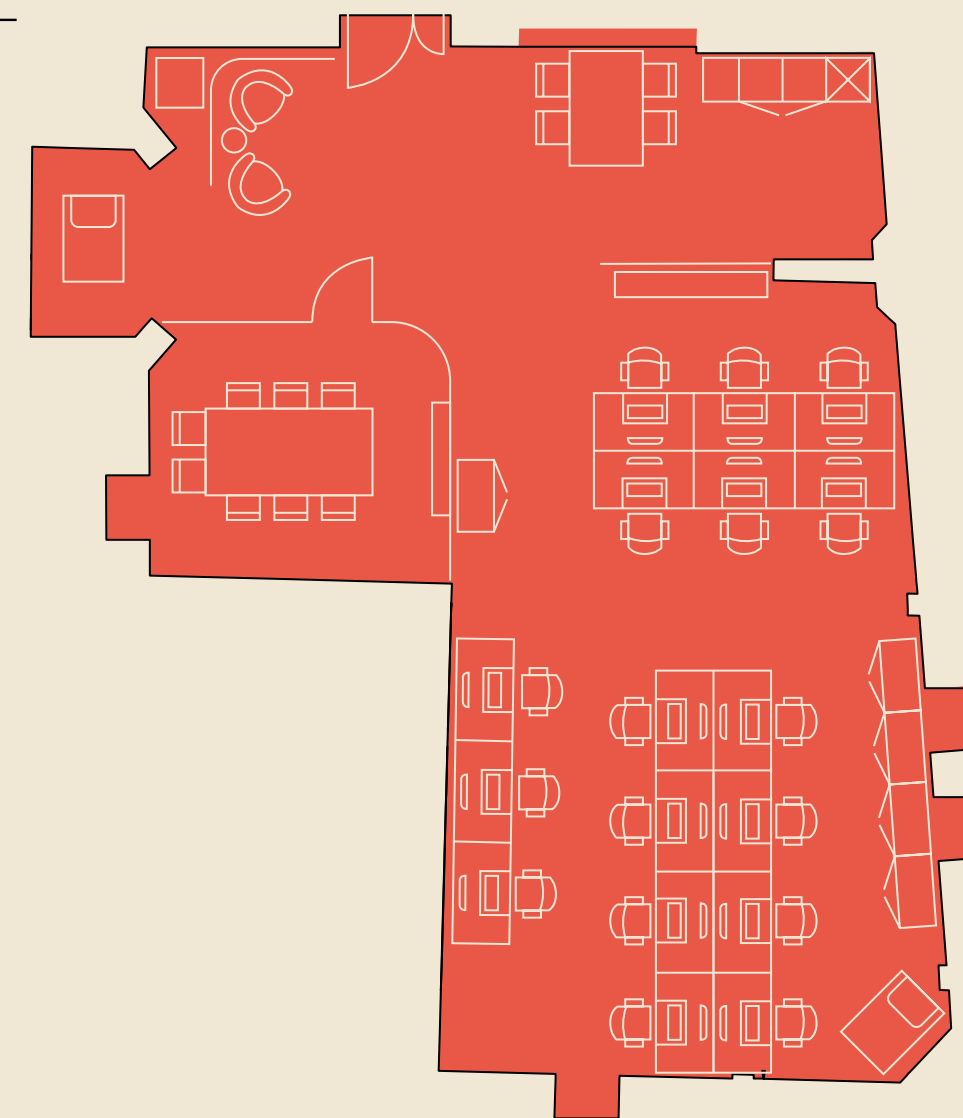
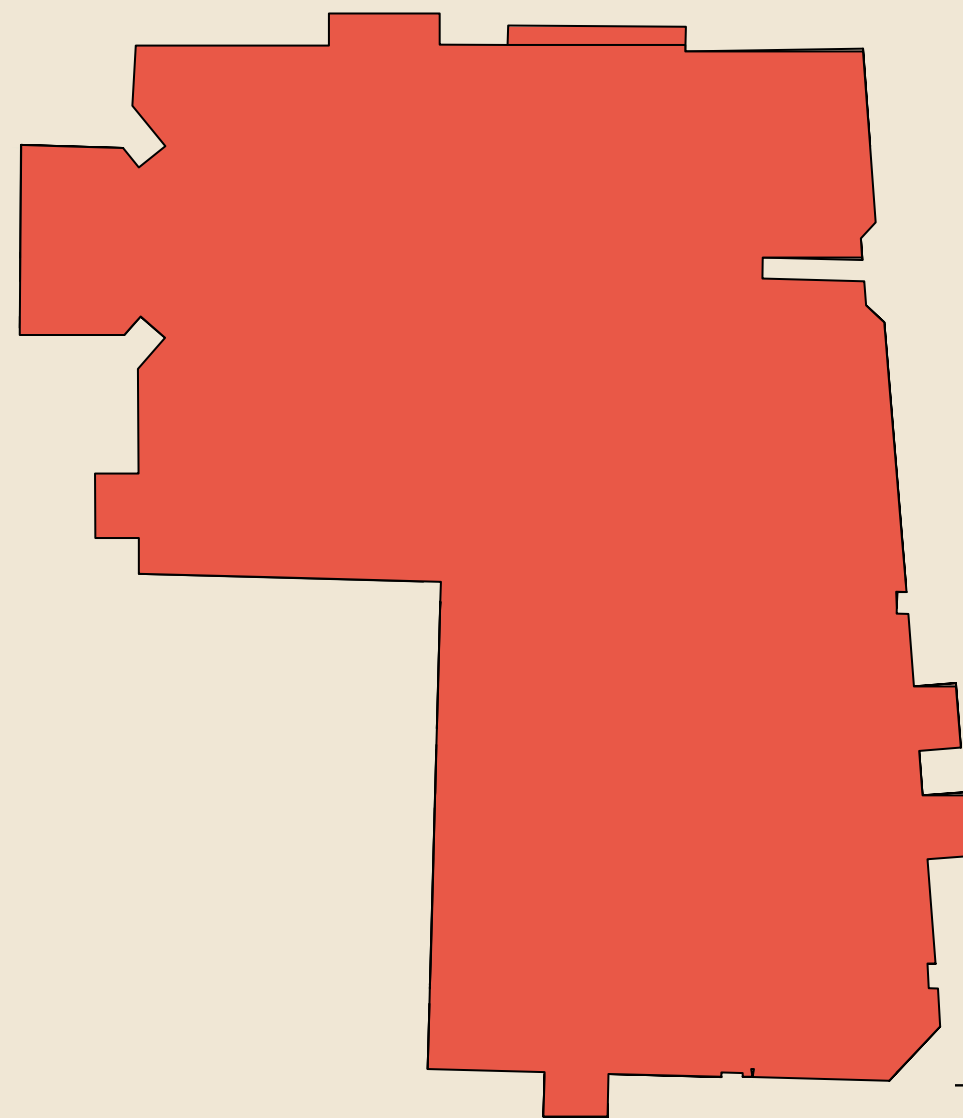
- 17 x Open Plan Desks
- 1 x 8 Person Meeting Room
- 1 x Kitchen / Breakout Space

NET INTERNAL AREAS 1,363 sq ft

GROSS INTERNAL AREAS 2,303 sq ft

Tudor Street

New Bridge Street



# WHERE LONDON'S KEY DISTRICTS COME TOGETHER

16-18 New Bridge Street's strategic position on the western side of the City of London provides unrivalled access to Midtown, Farringdon & Southbank.

## RESTAURANTS

- |                           |                           |
|---------------------------|---------------------------|
| 01 Natural Kitchen        | 08 Paternoster Chop House |
| 02 Yolk                   | 09 Brasserie Blanc        |
| 03 Jamies Tudor Street    | 10 NYnlon                 |
| 04 Cord by Le Cordon Bleu | 11 Chi Noodle & Wine Bar  |
| 05 El Vino                | 12 Indian City            |
| 06 Lazy Ballerinas        | 13 Albion                 |
| 07 Cigalon                | 14 Pegasus                |

## CAFÉS

- |                         |
|-------------------------|
| 01 Blank Street         |
| 02 Starbucks            |
| 03 Gails                |
| 04 Alchemy Cafe         |
| 05 Fleet Street Press   |
| 06 Pickwick Coffee Club |
| 07 Paul                 |





CANARY WHARF

LIVERPOOL STREET

CITY CLUSTER

MANSION HOUSE

LONDON BRIDGE

ONE BLACKFRIARS

HSBC

ST PAUL'S

ST. PAUL'S CATHEDRAL

MILLENNIUM BRIDGE

TATE MODERN

BARBICAN

CITY THAMESLINK

BLACKFRIARS

BLACKFRIARS BRIDGE

STATE STREET HQ

JP MORGAN

GOLDMAN SACHS INTERNATIONAL

JUSTICE QUARTER

FARRINGTON

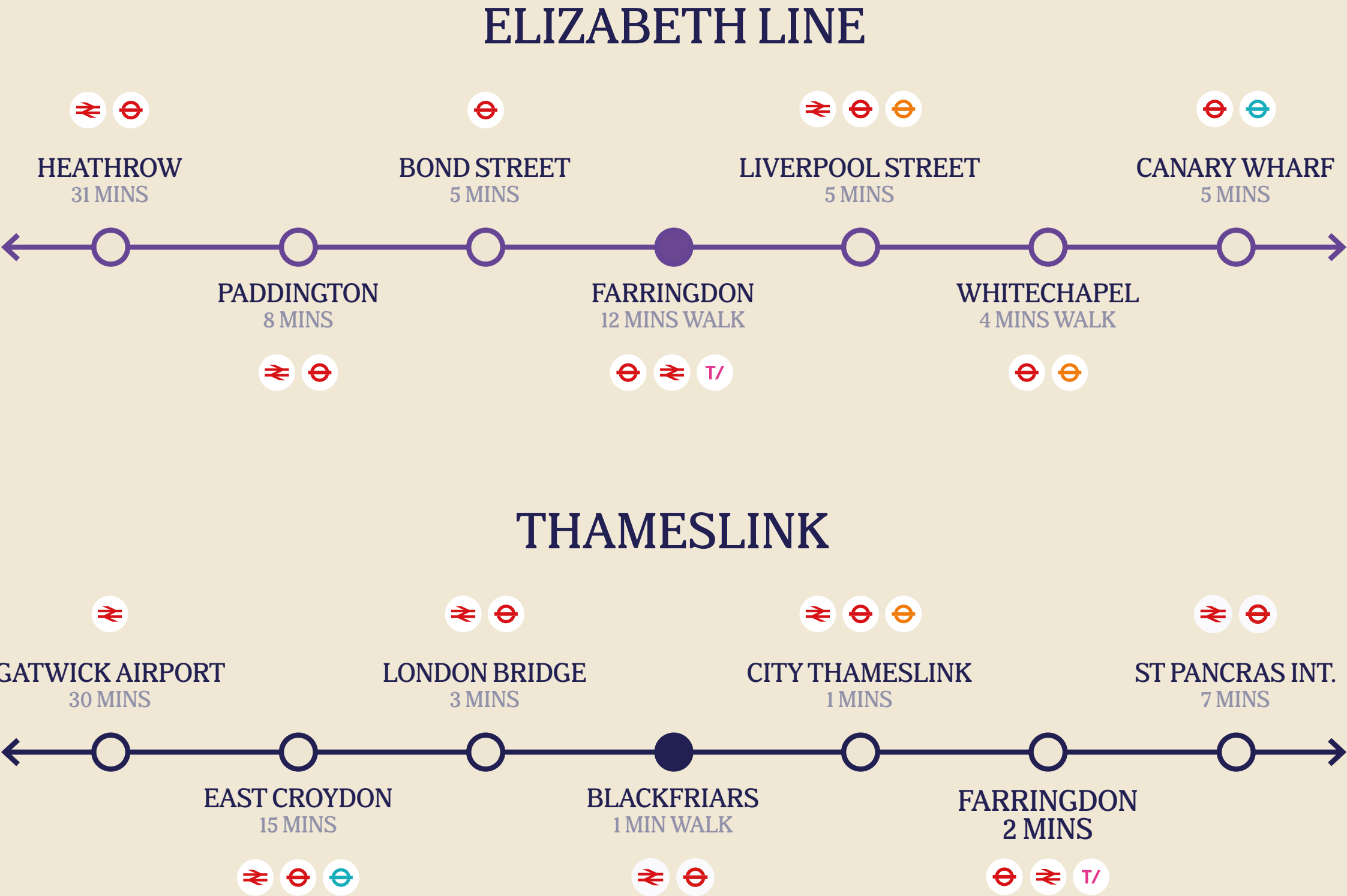
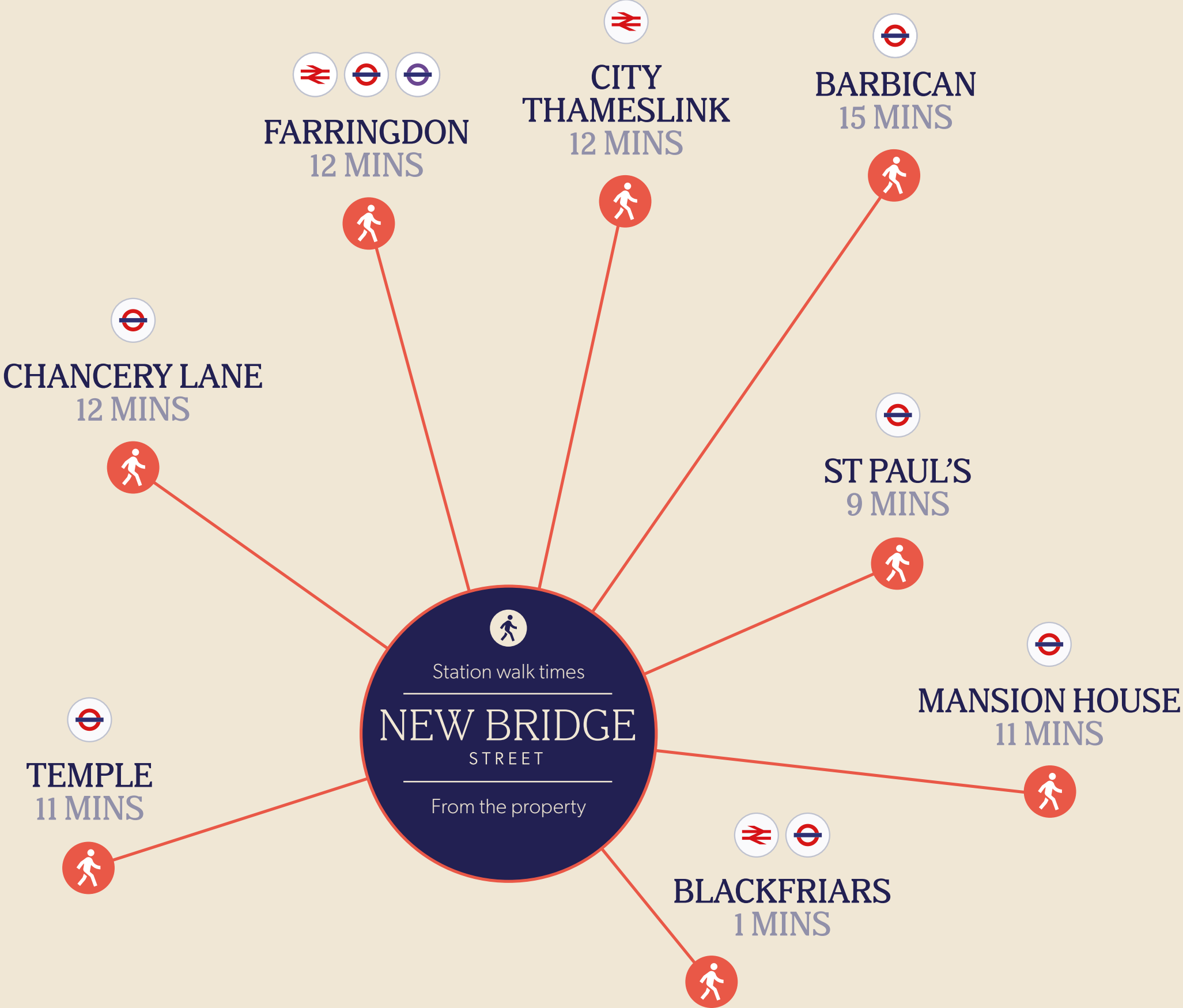
CHANCERY LANE

16 18  
NEW BRIDGE  
STREET

KEY  
Train station  
Central Line  
Circle Line  
Elizabeth Line

# THE CITY'S KEY STATIONS, ALL WITHIN WALKING DISTANCE.

The building offers excellent connectivity via the Elizabeth Line, Thameslink and Underground services from nearby Blackfriars and Farringdon stations. Fast links to Canary Wharf, the West End, King's Cross, Heathrow and Gatwick, plus extensive bus routes, provide easy access across central London.





# SPECIFICATION

High-quality specification throughout.



CAT A FLOORS



FULLY FITTED OPTIONS  
ON REQUEST



BUILDING CONCIERGE  
RECEPTION



TWO PIPE VRF  
AIR-CONDITIONING



2 X 8 PERSON  
PASSENGER LIFTS



SHOWERS & BIKE  
STORAGE

## EPC

Available on request

## Terms

Available by way of a new lease direct from the landlord on terms by arrangement.

**TO ARRANGE A VIEWING OR LEARN  
MORE, PLEASE GET IN TOUCH;**



**ALEX KEMP**

akemp@hanovergreen.co.uk

07881 610 962

**GEORGE BREWSTER**

gbrewster@hanovergreen.co.uk

07745 606 874

