

4 NEW STREET SQUARE

1,911 SQ FT OF
CREATED WORKSPACE -
DESIGNED, DELIVERED
AND MANAGED BY LANDSEC
AVAILABLE NOW



WELCOME TO NEW STREET SQUARE

New Street Square is a hidden gem situated between the vibrant areas of Farringdon, Chancery Lane, and Fleet Street.

This prestigious address offers a unique blend of striking architecture, excellent connectivity, and a tranquil environment.

The area's charm and strategic location have made it a coveted destination for a diverse range of organizations seeking an inspiring and well-connected base in the city.



SERENE, SOCIAL, STRIKING

Vibrant street food markets and curated seasonal events enhance the atmosphere of New Street Square - all within the clean, safe public space of this Landsec-managed estate.

Healthy food, artisan coffee, glistening architecture, and plenty of social spots provide what's needed for productive days and enjoyable evenings.



CAMPUS COMMUNITY

In addition to the central location and excellent amenities, customers can also capitalise on Myo New Street Square - a Landsec-owned serviced workplace offering a range of premium meeting and event venues, plus flexible, short-term workspaces.



A NEW HEART

Being only a short walk from Chancery Lane and Farringdon means that there's even more to offer beyond New Street Square. This area has blossomed, hosting a superb range of restaurants, entertainment and culture, complemented by leading gyms and serene pocket parks.

Local lifestyle is further enhanced by Fleet Street Quarter, dedicated to delivering a diverse programme of events and activities in and around the hub of New Street Square.

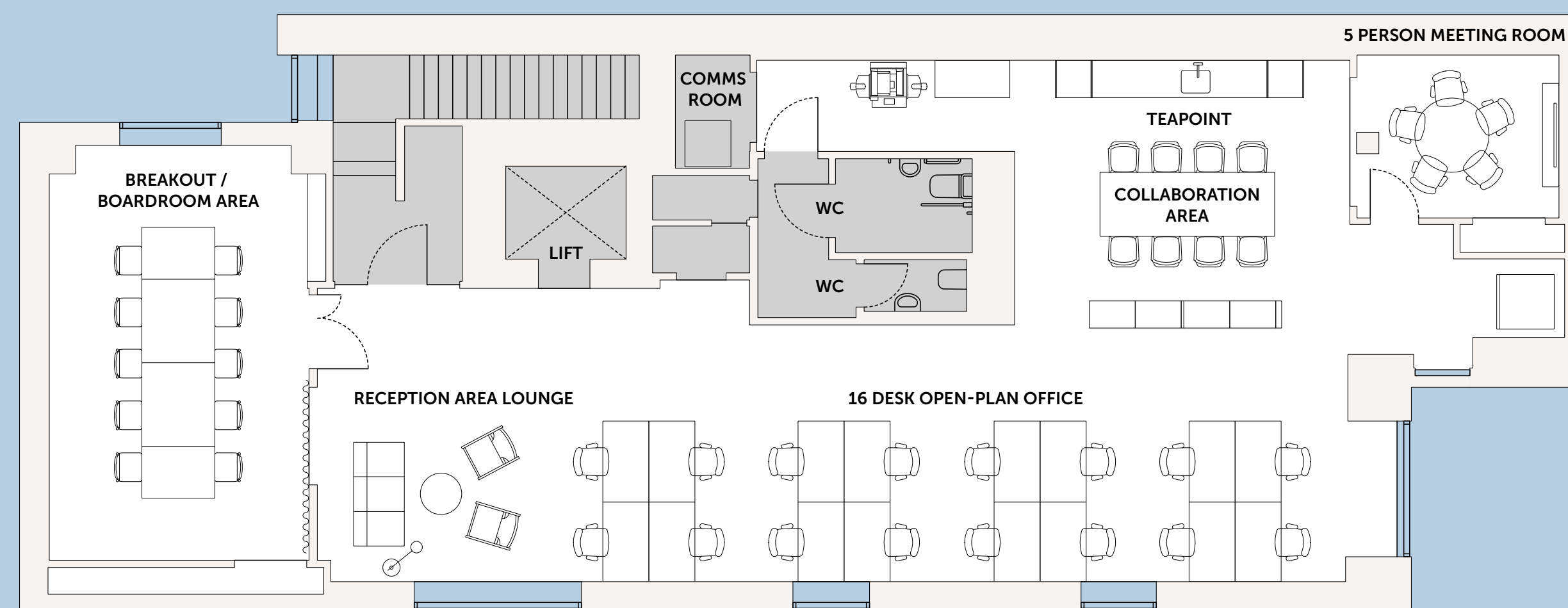


SPACE PLAN

LEVEL 1

1,911 sq ft / 178 sq m

Reception area lounge
 16 desk open-plan office
 10/12 person board room
 1 x 5 person meeting room
 Teapoint
 Breakout area
 2 x WCs
 Comms room
 Access to estate showers and bike racks



For indicative purposes only. Not to scale. Floor area subject to remeasurement.

WELCOME TO CREATED

Fully designed, fitted and created for wellbeing and productivity. Created offers self-contained, spacious and sustainable workspaces.

Our dedicated property management team are on hand to ensure a streamlined move and positive workplace experience. Ongoing managed services can be delivered as a package of essentials, with additional services available to suit your needs.

Designed, delivered and ready to go.



DISCOVER THE AREA

NEW STREET SQUARE

OCCUPIERS

- Taylor Wessing
- Deloitte
- Cassava Technologies
- E A Gibson
- Burges Salmon LLP
- OC&C Strategy Consultants
- Stewarts
- McGuireWoods

RESTAURANTS AND BARS

- Coco Di Mama
- Garbanzos
- Natural Kitchen
- Olive + Squash
- Yolk
- The Refinery
- Bonata
- Birley Sandwiches

OCCUPIERS

- 1 Goldman Sachs
- 2 TikTok
- 3 Amazon
- 4 Travers Smith LLP
- 5 Bird & Bird
- 6 Hogan Lovells
- 7 Macfarlanes LLP
- 8 Saatchi & Saatchi
- 9 Weil, Gotshal & Manges LLP
- 10 Boies Schiller Flexner LLP

AMENITIES

- 1 Lincoln's Inn Fields
- 2 Leather Lane Market
- 3 St. Paul's Cathedral
- 4 Bounce
- 5 Gym Box
- 6 BrewDog
- 7 Lucky Voice
- 8 Bleeding Heart
- 9 The Salad Kitchen
- 10 Cord Café



LONDON MADE EASY

Walking to Farringdon, Chancery Lane or City Thameslink gives you access to the quickest routes through Central London and beyond.

With the Elizabeth Line providing access to the City in three minutes, the West End in five, and ten to Canary Wharf, there's really no better location for your business.

Walking times

Chancery Lane

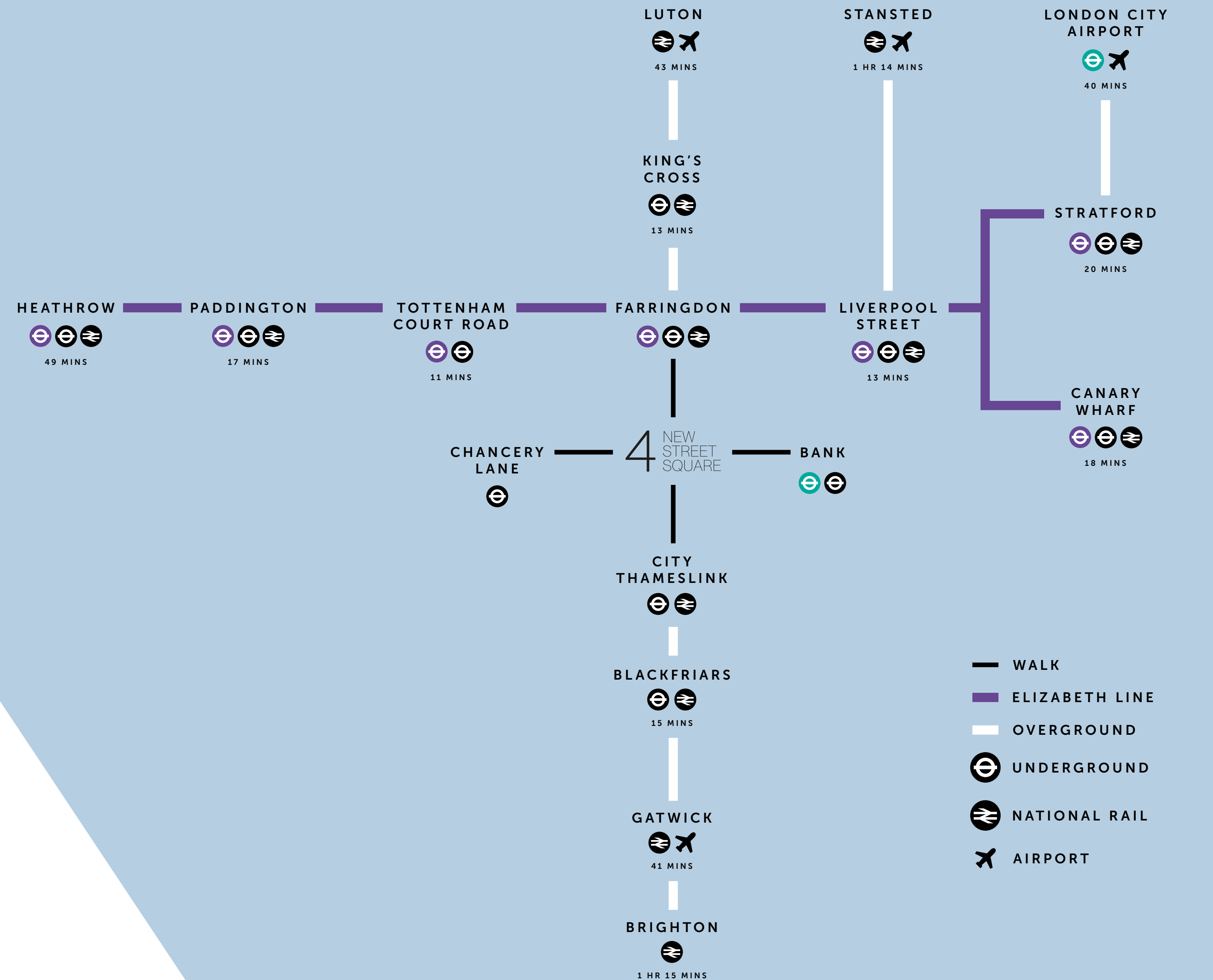
 **5**
Minutes

City Thameslink

 **6**
Minutes

Farringdon

 **8**
Minutes





For further information contact:



Katie Sommer
katie.sommer@jll.com
+44 (0)7703 608 316

Rory Paton
rory.paton@jll.com
+44 (0)7900 245 221

Nick Going
nick.going@jll.com
+44 (0)7756 500 466



Daisy Walder
daisy.walder@nmrk.com
+44 (0)7425 828 376

Sam Boreham
sam.boreham@nmrk.com
+44 (0)7917 635 465

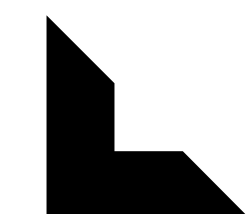
Whilst every effort has been made to ensure accuracy, no responsibility is taken for any error, omission or mis-statement in these particulars which do not constitute an offer or contract. No representation or warranty whatever is made or given either during negotiations or in particular by the vendor, lessors or agents. All figures are exclusive of rates, service charge, VAT and all other outgoings. The agents have not tested the services. Images are for indicative purposes only. All floor areas are approximate. Date of preparation. April 2025.

We create places that make a lasting positive contribution to our communities and our planet.

We bring people together, forming connections with each other and the spaces we create. And we provide our customers, partners and people with a platform to realise their full potential.

Workplace by Landsec acts as your strategic business partner. We get to know you and put your needs first. Offering a range of healthier, more sustainable spaces - positive places packed with inspirational experiences to enhance your working day.

WORKPLACE



Landsec