



KNIGHTSBRIDGE

# Space plan Option 1

## Typical Workspace:

Open Plan 1800 Desks	x38
Single offices	x5
<b>Total seats</b>	<b>43 (1:11 sq m)</b>

## Meeting Rooms:

4 person meeting room	x2
8 person meeting room	x1
16 person meeting room	x1
<b>Total seats</b>	<b>32</b>

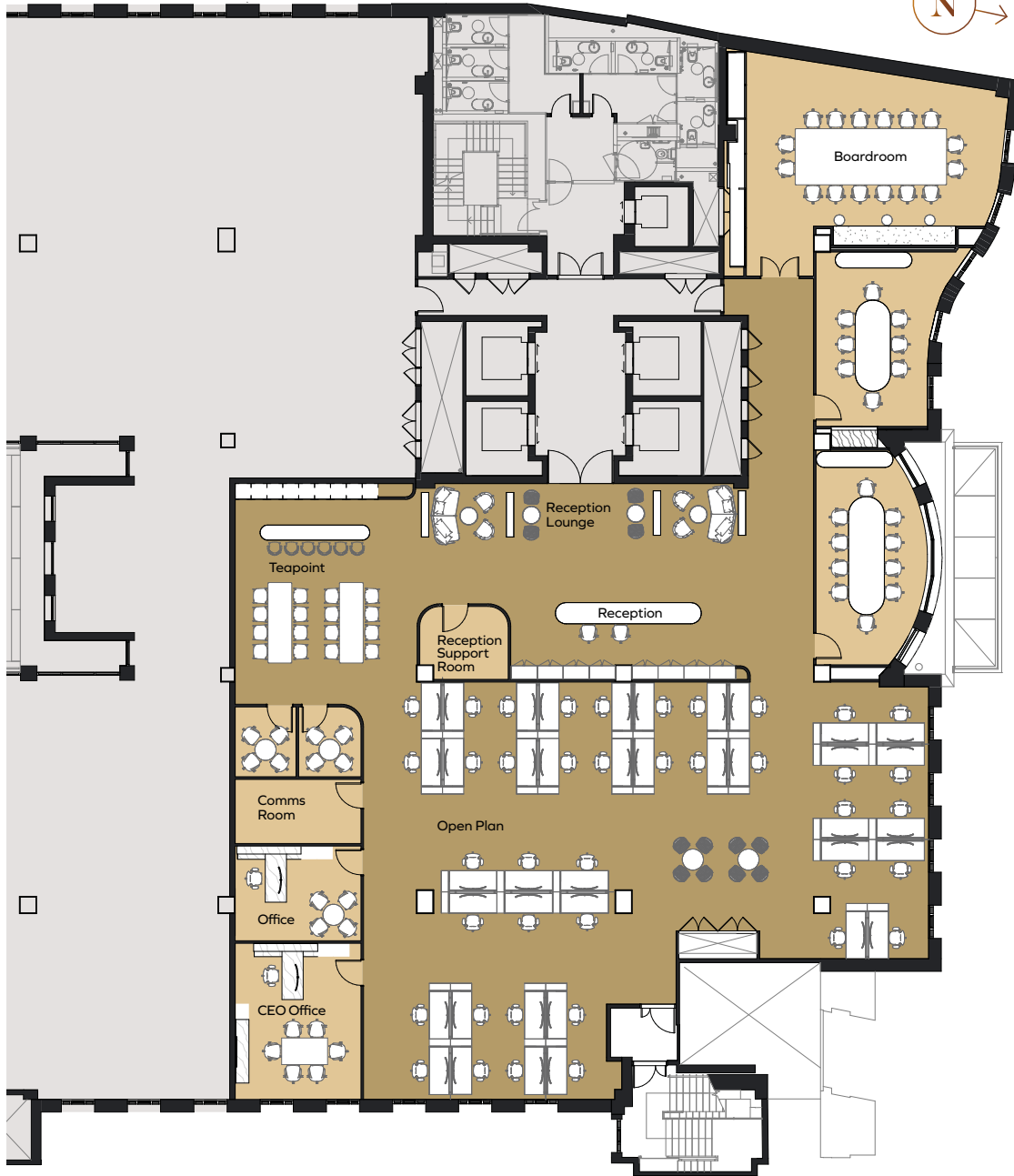
## Social & Collaboration:

Teapoint	x15
Social	x12
<b>Total seats</b>	<b>27</b>

## Support Spaces:

Reception Support Room	x1
Comms Room	x1
WC	x1
Shower	x1

LANESBOROUGH PLACE



KNIGHTSBRIDGE

# Space plan Option 2

## Typical Workspace:

Open Plan 1800 Desks	x40
Single offices	x2
<b>Total seats</b>	<b>54 (1:10 sq m)</b>

## Meeting Rooms:

4 person meeting room	x2
8 person meeting room	x1
10 person meeting room	x1
16 person meeting room	x1
<b>Total seats</b>	<b>42</b>

## Social & Collaboration:

Teapoint	x22
Social	x16
<b>Total seats</b>	<b>38</b>

## Support Spaces:

Reception Support Room	x1
Comms Room	x1

LANESBOROUGH PLACE